



SHESTAKOV

Yacht Sales

48 - FJORD



Builder:

Fjord

Model:

48

LOA:

50' 0" (15.28 m)

Min Draft:

4' 3" (1.30 m)

Beam:

15' 0" (4.80 m)

Max Draft:

4' 3" (1.30 m)

Cruise Speed:

25 kn / 28.77 mph

Max Speed:

38 kn / 43.73 mph

Gross Tonnage:

16 Pounds

Water Capacity:

79.25 Gallons

Fuel Capacity:

237.76 Gallons

Sleeps:

4

If you would like to buy a yacht **48 - Fjord** or would like help, please call +1(954)274-4435 or visit shestakovyachtsales.com

TABLE OF CONTENTS

OVERVIEW	3
Selecting a 48	3
Features of the Model	3
Technical Specifications	4
Pricing and Ordering	4
Questions and Answers	5
Owner Experience Review	5
Pros and Cons	6
Comparison with Other Models	7
SPECIFICATIONS	8
GALLERY	9
CONTACTS	14

OVERVIEW

Discover the 48 from Fjord — a modern motor yacht designed for contemporary owners and situated within the wider motor yachts segment. Built on a durable fiberglass platform, it pairs twin Volvo diesel inboards with a practical four-berth layout and efficient systems. For full specifications, availability, and purchase guidance, consult Shestakov Yacht Sales and broker Andrey Shestakov.

Selecting a 48

Opt for the 48 when you want a harmonious blend of performance, onboard comfort, and economical operation. Measuring 50 ft (15.28 m) LOA with a 15 ft (4.8 m) beam and a 4.265 ft (1.3 m) draft, it suits varied coastal cruising profiles. Twin Volvo diesel inboards provide a steady 25-knot cruise and can push toward 38 knots when higher speeds are needed. Classified as a highly capable motor yacht within the motor yachts class, it accommodates four guests in one head configuration, offers sensible tankage, and retains the reassuring feel of a monohull.

Features of the Model

- Built as a fiberglass build with fiberglass deck for durability and easy upkeep
- Twin (2) Volvo diesel inboard engines for efficient, predictable propulsion
- Cruise at 25 knots (approx. 28.77 mph) and top out near 38 knots (approx. 43.73 mph)
- Monohull design with input from Fjord Yachts for both hull and interior
- Accommodations for 4 with 1 head, supporting weekend and short-cruise plans
- Practical capacities: 237.76 gal fuel and 79.25 gal water

- 16 GT gross tonnage underscores a solid, seagoing platform

Technical Specifications

- Model: 48 by Fjord
- Category: motor yacht in the motor yachts category
- Hull material: fiberglass construction
- Deck material: Fiberglass
- Hull configuration: Monohull
- Hull designer: Fjord Yachts
- Interior designer: Fjord Yachts
- LOA: 50 ft / 15.28 m
- Beam: 15 ft / 4.8 m
- Draft (min/max): 4.265 ft / 1.3 m
- Engines: 2 x Volvo, Inboard, Diesel
- Speed (cruise/max): 25 kn (28.77 mph) / 38 kn (43.73 mph)
- Fuel capacity: 237.76 gal
- Water capacity: 79.25 gal
- Accommodations: 4 (sleeps 4)
- Heads: 1
- Gross tonnage: 16 GT

Pricing and Ordering

Engage directly with Shestakov Yacht Sales to obtain current pricing, confirm availability, and discuss lead times for the 48 by Fjord. Broker Andrey Shestakov can walk you through detailed specifications, match you with appropriate listings, and coordinate inspections to secure the ideal yacht under favorable terms.

Questions and Answers

Q: What are the main dimensions of the 48? A: The **LOA** measures 50 ft (15.28 m), the **beam** is 15 ft (4.8 m), and the **draft** is 4.265 ft (1.3 m).

Q: How fast is this motor yacht and what engines does it use? A: The 48 maintains a cruise speed of **25 knots** (approx. 28.77 mph) and can reach up to **38 knots** (approx. 43.73 mph) powered by twin **Volvo diesel inboard** engines (2 total).

Q: What accommodations are on board? A: The yacht provides sleeping space for **4** and includes **1 head** , consistent with its position in the motor yachts segment.

Q: What is the build and hull type? A: It is a monohull constructed on a fiberglass structure with a **fiberglass** deck; both the hull and interior styling were produced by Fjord Yachts.

Q: How do I purchase through Shestakov Yacht Sales? A: Reach out to Andrey Shestakov at Shestakov Yacht Sales to review **specifications** , verify **availability** , and move forward with offers for the 48 by Fjord.

Owner Experience Review

Owners often deploy the 48 by Fjord as a Mediterranean-style dayboat focused on socializing: the galley and bar occupy the main deck among the principal entertaining zones, seating and sun-lounges sit fore and aft, and the cockpit can be converted into an expansive sunpad. A Williams-sized tender garage under the sunpad keeps the deck clear and supports both owner-operator use and mothership operations. Below decks, an owner cabin with an island berth, a second cabin and a wetroom make short overnight trips comfortable for a couple or a small family; several market examples show charter service and

have commercial coding.

Underway, the vessel feels responsive and lively, with IPS/joystick systems frequently lauded for close-quarters control — one sea trial summed it up: "The Fjord joystick control was good." Owners and listings commonly report an economical cruise near 25 knots and peak speeds around 38–40 knots; the handling is described as sporty and best suited to protected, Mediterranean-style conditions rather than long ocean passages. IPS provides genuine docking convenience but brings higher specialist service and parts costs, requiring Volvo Penta/IPS-trained technicians; listings often include comprehensive service histories. Brokerage reports indicate fuel consumption near 180 L/h at a 25-knot cruise.

Pros and Cons

- All-on-deck social layout with a convertible cockpit and fore/aft sun-lounges makes day entertaining effortless.
- IPS joystick delivers nimble handling and stress-free docking in close quarters.
- Comfortable ~25-knot cruise with ~38–40-knot top speeds commonly reported adds sporty flexibility.
- Specialist IPS maintenance and parts can be costlier and require VP/IPS-trained technicians.
- Reported fuel burn of roughly 180 L/h at ~25 knots may be significant for operating budgets.
- Sporty, Med-focused design is better for sheltered waters than true ocean passagemaking.

Comparison with Other Models

Model	LOA	Beam	Draft	Speed (Cruising/Max)	Gross Tonnage
48	50' 0" (15.28 m)	15' 0" (4.80 m)	4' 3" (1.30 m)	25 kn / 38 kn	16
40	39' 0" (11.99 m)	13' 0" (3.99 m)	3' 3" (1 m)	26 kn / 35 kn	
44 Open	44' 0" (13.41 m)	13' 0" (4.24 m)	11' 3" (3.42 m)	30 kn / 40 kn	
38 Xpress	38' 0" (11.61 m)	11' 0" (3.58 m)	10' 1" (3.08 m)		
39XL	39' 0" (11.97 m)	13' 0" (3.99 m)	3' 0" (0.92 m)	20 kn / 34 kn	9.9
38 Open	38' 0" (11.58 m)	11' 0" (3.63 m)	11' 3" (3.42 m)		
41 XL	39' 0" (12.09 m)	13' 0" (3.96 m)			
FJORD 41XL	45' 0" (13.70 m)	13' 0" (4 m)	3' 9" (1.15 m)	30 kn / 44 kn	10700
53 XL	54' 0" (16.70 m)	15' 0" (4.79 m)	4' 6" (1.37 m)		
N/A	35' 0" (10.80 m)	12' 0" (3.65 m)	2' 8" (0.80 m)	24 kn / 40 kn	

SPECIFICATIONS

LOA:

50' 0" (15.28 m)

Beam:

15' 0" (4.80 m)

Cruise Speed:

25 kn / 28.77 mph

Gross Tonnage:

16 Pounds

Fuel Capacity:

237.76 Gallons

Sleeps:

4

Hull Material:

Fiberglass and Plastic Yachts

Hull Configuration:

Monohull

Interior Designer:

Fjord Yachts

Engines:

2

Engine Type:

Inboard

Min Draft:

4' 3" (1.30 m)

Max Draft:

4' 3" (1.30 m)

Max Speed:

38 kn / 43.73 mph

Water Capacity:

79.25 Gallons

Total Heads:

1

Deck Material:

Fiberglass

Hull Designer:

Fjord Yachts

Manufacturer:

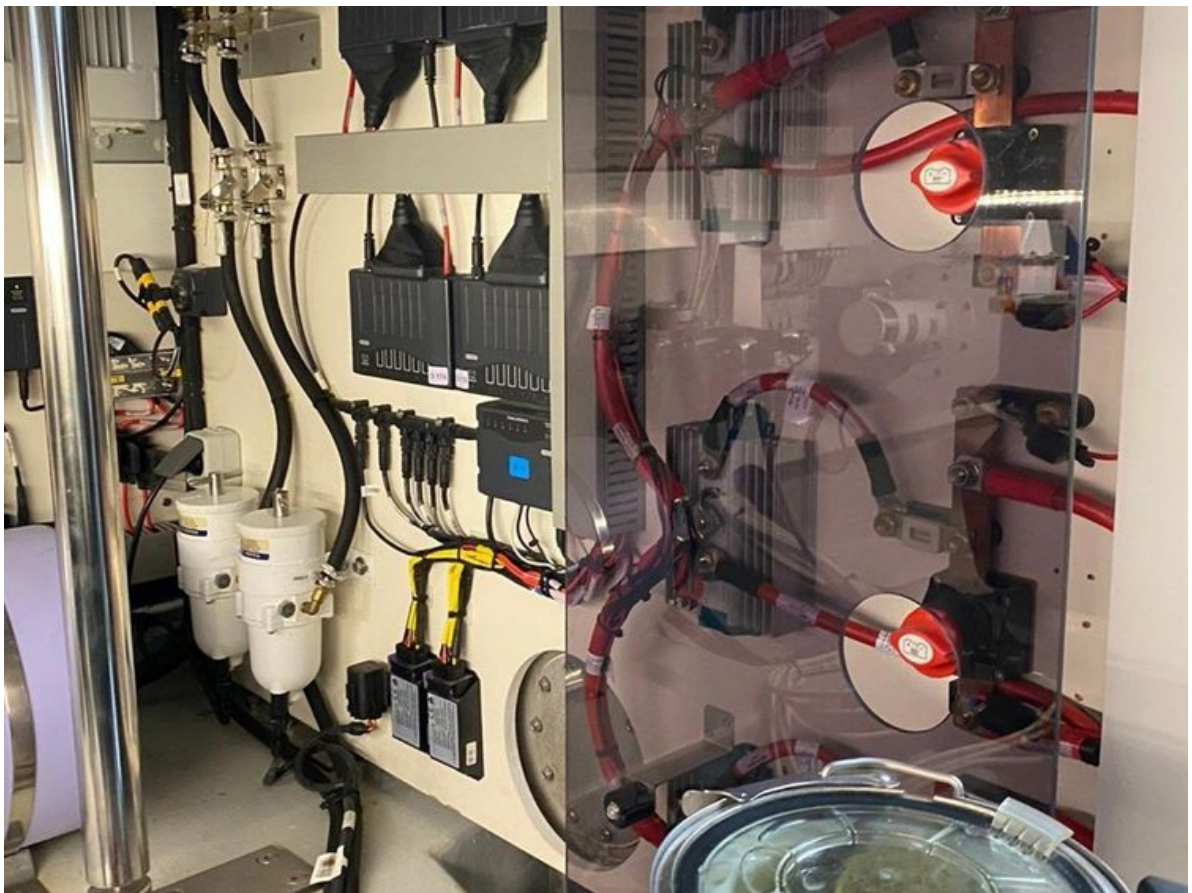
Volvo

Fuel Type:

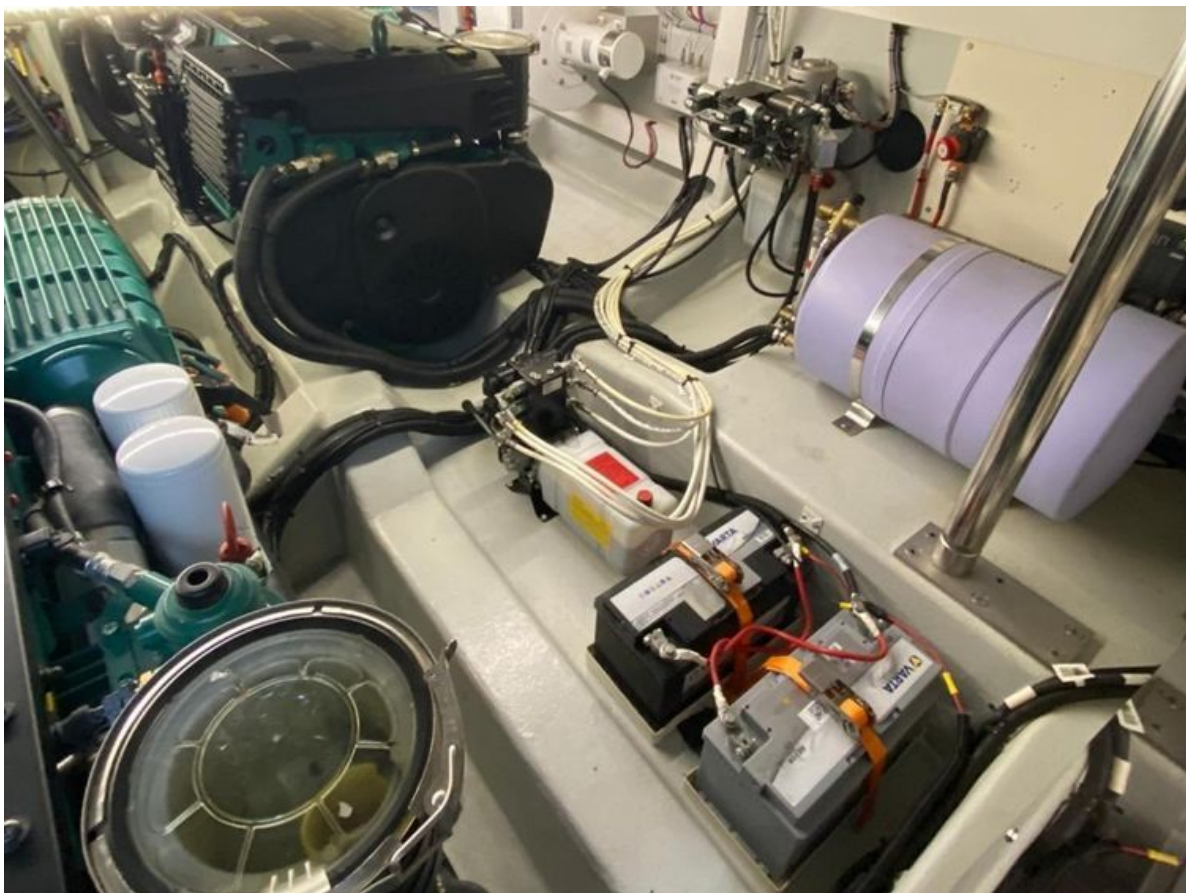
Diesel

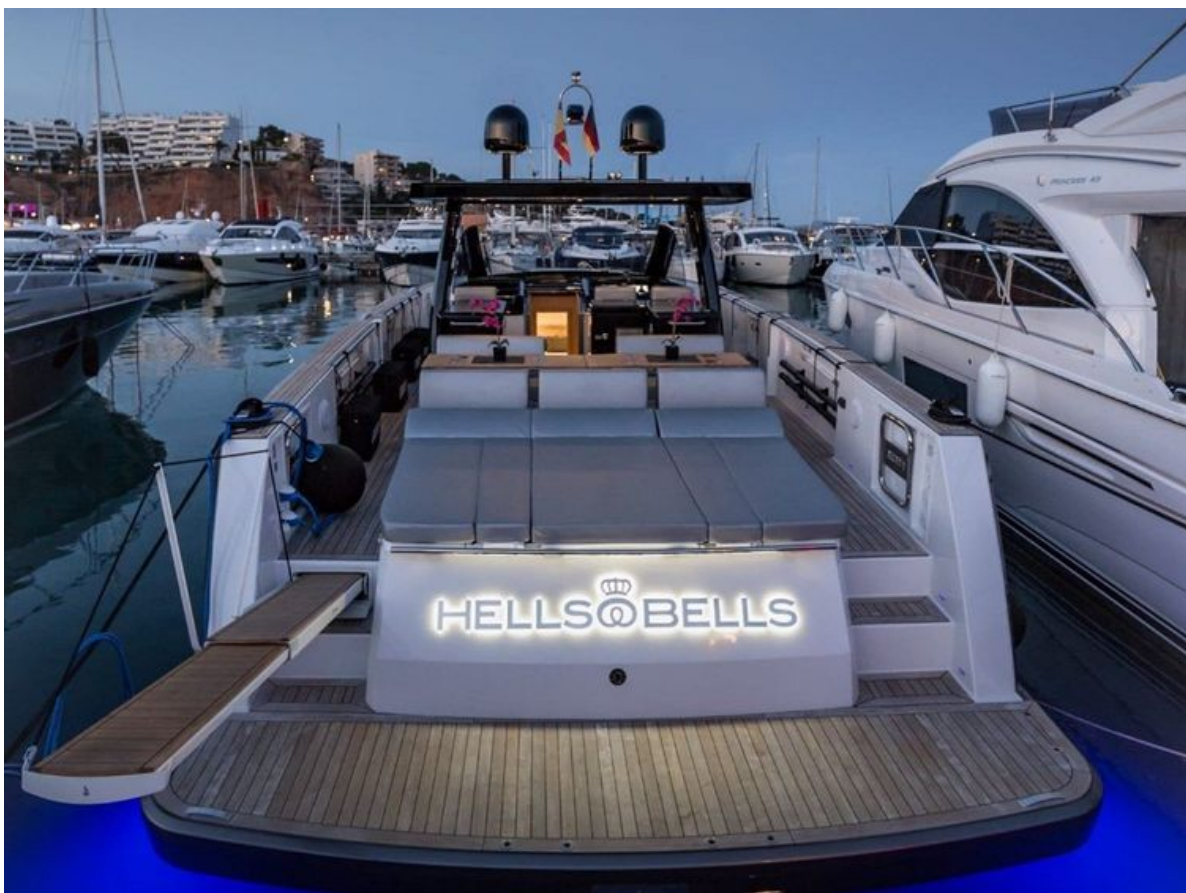
GALLERY











CONTACTS

Shestakov Yacht Sales is a brokerage company specializing in the sale and service of yachts worldwide. The company offers services for buying and selling both new and used motor yachts, sailing vessels, and luxury superyachts. They also provide yacht registration, insurance, technical maintenance, crew selection, and charter organization services across the U.S., Canada, Latin America, the Caribbean, and the Bahamas.

The founder and lead broker of the company is Andrey Shestakov, a licensed and certified expert with extensive experience in marine engineering and shipbuilding.

The company has an extensive network of partnerships with major yacht manufacturers worldwide and provides services in multiple languages, including Russian, Ukrainian, Spanish, and English. The office is in Dania Beach, Florida, USA.

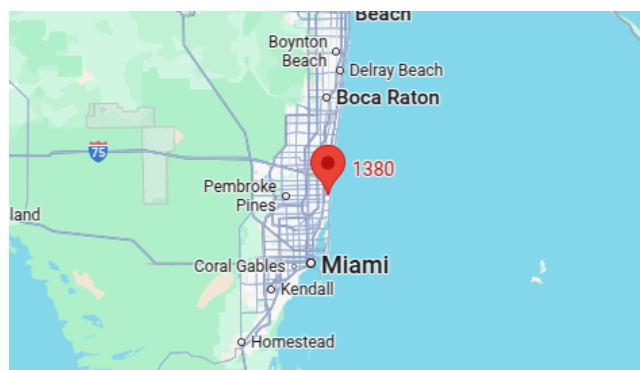
For more information and to view available yachts, you can visit the company's official website: <https://shestakovyachtsales.com>

Contact details

Phone: +1(954)274-4435

Email: andrey@shestakovyachtsales.com

Address



1380 Weeping Willow Way, Hollywood,
Florida 33019