



SHESTAKOV

Yacht Sales

## 400 SUPER SPORT – FORMULA BOATS



**Builder:**

Formula Boats

**Model:**

400 Super Sport

**LOA:**

40' 0" (12.19 m)

**Beam:**

11' 0" (3.35 m)

**Max Draft:**

9' 10" (3 m)

**Water Capacity:**

50 Gallons

**Fuel Capacity:**

250 Gallons

**Hull Material:**

Fiberglass and Plastic Yachts

**Deck Material:**

Fiberglass

**Hull Configuration:**

Deep Vee

**Engines:**

2

**Manufacturer:**

MerCruiser

If you would like to buy a yacht **400 SUPER SPORT – Formula Boats** or would like help, please call +1(954)274-4435 or visit [shestakovyachtsales.com](http://shestakovyachtsales.com)

---

# TABLE OF CONTENTS

---

<b>OVERVIEW .....</b>	<b>3</b>
<b>Selecting a 400 Super Sport .....</b>	<b>3</b>
<b>Features of the Model .....</b>	<b>3</b>
<b>Technical Specifications .....</b>	<b>4</b>
<b>Pricing and Ordering .....</b>	<b>4</b>
<b>Questions and Answers .....</b>	<b>4</b>
<b>Owner Experience Review .....</b>	<b>5</b>
<b>Pros and Cons .....</b>	<b>6</b>
<b>Comparison with Other Models .....</b>	<b>6</b>
<b>SPECIFICATIONS .....</b>	<b>8</b>
<b>GALLERY .....</b>	<b>9</b>
<b>CONTACTS .....</b>	<b>14</b>

# OVERVIEW

---

Discover the 400 Super Sport by Formula Boats — a performance focused motor yacht in the contemporary motor yachts category, laid up on a resilient fiberglass and plastic hull. Offered through Shestakov Yacht Sales with broker Andrey Shestakov, this 40 foot design pairs assertive handling with pragmatic capacity to serve a variety of cruising roles.

## Selecting a 400 Super Sport

---

Opt for the 400 Super Sport when you want a well balanced 40 ft (12.19 m) platform featuring an 11 ft (3.35 m) beam, the predictable ride of a Deep Vee hull, and the convenience of twin **Mercruiser I/O Gas** powerplants. As a contemporary motor yacht inside the broader motor yachts segment, it appeals to owners who prioritize responsive handling, straightforward servicing, and the durability of a fiberglass and plastic construction backed by the Formula Boats name. Work with Andrey Shestakov at Shestakov Yacht Sales to align this model with your cruising plans, crew needs, and preferred cruising grounds.

## Features of the Model

---

- Deep Vee hull form delivering steady tracking and confident control in varied sea states.
- Twin **Mercruiser I/O Gas** propulsion offering accessible maintenance routes and a sporty throttle response.
- Solid fiberglass and plastic hull and a Fiberglass deck for longevity and simplified upkeep.
- Thoughtful dimensions: 40 ft LOA combined with an 11 ft beam to maximize deck space and on water stability.

- Practical service capacities for flexible cruising: 250 gal fuel and 50 gal freshwater.

## Technical Specifications

---

- Type and class: motor yacht within motor yachts
- Hull material: fiberglass and plastic
- Hull configuration: Deep Vee
- Deck material: Fiberglass
- LOA: 40 ft (12.19 m)
- Beam: 11 ft (3.35 m)
- Draft (max): 9.843 ft (3 m)
- Engines: 2 x Mercruiser, I/O, Gas
- Fuel capacity: 250 gal
- Water capacity: 50 gal

## Pricing and Ordering

---

For current pricing, availability, and guidance on acquiring a 400 Super Sport from Formula Boats, reach out to Andrey Shestakov at Shestakov Yacht Sales. We will coordinate market intel with your timeline, arrange inspections and paperwork, and manage delivery logistics to make the purchase process efficient and transparent.

## Questions and Answers

---

- Q: What is the overall size of the 400 Super Sport? A: The **LOA** measures 40 ft (12.19 m) and the **beam** is 11 ft (3.35 m), providing a stable and roomy footprint suited to a variety of cruising activities.
- Q: What powers this model? A: Power comes from a pair of **Mercruiser**

**engines** with **I/O** drives running on **Gas**, a combination that balances spirited performance with familiar service networks.

- Q: What is the hull setup? A: The design employs a **Deep Vee hull** and a fiberglass and plastic layup to deliver durability and predictable seakeeping.
- Q: What are the onboard capacities? A: **Fuel capacity** is 250 gal and **water capacity** is 50 gal, supporting day trips and multi-day weekends without frequent refueling.
- Q: Who can help me purchase and outfit the boat? A: **Shestakov Yacht Sales** and broker **Andrey Shestakov** will assist with selection, pricing negotiations, documentation, and delivery for your 400 Super Sport.

## Owner Experience Review

---

Owners typically use the 400 Super Sport from Formula Boats as a high-performance dayboat with credible capabilities for weekend getaways. The cockpit is frequently noted for its generous dimensions and sociable arrangement, and the two-cabin layout—an aft owner's stateroom plus a forward saloon/berth—accommodates short family cruises and overnighting. Reported interior headroom near 6 ft 2 in and the brand's strong fit and finish are commonly praised, though many owners view the design more as a sport cruiser than a full-time liveaboard.

On the water, Formula's FAS3Tech/FASTech hull is credited with producing a dry, stable ride and nimble handling for a boat of this size. Owners note brisk straight-line performance; with suitable propulsion and prop selection, published test runs show mid-40s top speeds and higher, and an owner forum described about 40 mph at 4,000 rpm in large swell. The model's weight (roughly 7–8 tons) means engine and drive choices have a substantial impact on performance outcomes.

Maintenance commentary often focuses on the sterndrives. Many examples

were delivered with Bravo III/XR drives, and owner discussions recount upper and lower drive failures—some even calling the model a “drive eater.” It is common to find used boats with replaced transom assemblies, renewed drives, or full repowers. A motorized hatch and generally good engine access ease routine work, but sterndrive maintenance remains a significant consideration; less common high horsepower or I/mor setups can complicate parts availability and repairs. As always, real world performance and upkeep vary based on each boat’s configuration and service history.

## Pros and Cons

- Spacious, sociable cockpit and helm arrangement that suit dayboating and onboard entertaining.
- FAS3Tech/FASTech hull delivers a stable, dry ride with agile handling.
- Two cabin interior including an aft owner’s stateroom and reported headroom around 6 ft 2 in that supports short cruises.
- Sterndrive maintenance can be substantial, with some owners labeling the model a “drive eater.”
- Heavier displacement means that engine and drive selection strongly influence actual performance.
- Interior layout and appointments lean toward day and weekend use rather than extended liveaboard comfort.

## Comparison with Other Models

Model	LOA	Beam	Draft	Speed (Cruising/Max)	Gross Tonnage
400 Super Sport	40' 0" (12.19 m)	11' 0" (3.35 m)	9' 10" (3 m)		
330 Crossover Bowrider	34' 0" (10.54 m)	10' 0" (3.12 m)	9' 7" (2.92 m)		

40 Cruiser	41' 0" (12.50 m)	12' 0" (3.81 m)	9' 0" (2.75 m)		
34PC	34' 0" (10.36 m)	11' 0" (3.50 m)			
310 BR	31' 0" (9.45 m)	9' 0" (2.87 m)	9' 10" (3 m)		
Formula 400 SS	40' 0" (12.19 m)	11' 0" (3.35 m)	10' 8" (3.25 m)		
37 PC	38' 0" (11.71 m)	12' 0" (3.66 m)	8' 2" (2.50 m)	37 kn / 47 kn	
430 Super Sport Crossover	43' 0" (13.11 m)	12' 0" (3.66 m)	11' 9" (3.58 m)	46 kn / 68 kn	
26 Bow Rider	27' 0" (8.43 m)	8' 0" (2.59 m)	3' 3" (1 m) – 12' 4" (3.75 m)	28 kn / 42 kn	
330 CBR	33' 0" (10.06 m)	10' 0" (3.14 m)	6' 11" (2.11 m) – 10' 2" (3.10 m)	32 kn / 52 kn	13

# SPECIFICATIONS

---

**LOA:**

40' 0" (12.19 m)

**Max Draft:**

9' 10" (3 m)

**Water Capacity:**

50 Gallons

**Hull Material:**

Fiberglass and Plastic Yachts

**Hull Configuration:**

Deep Vee

**Engines:**

2

**Engine Type:**

I/O

**Beam:**

11' 0" (3.35 m)

**Fuel Capacity:**

250 Gallons

**Deck Material:**

Fiberglass

**Manufacturer:**

MerCruiser

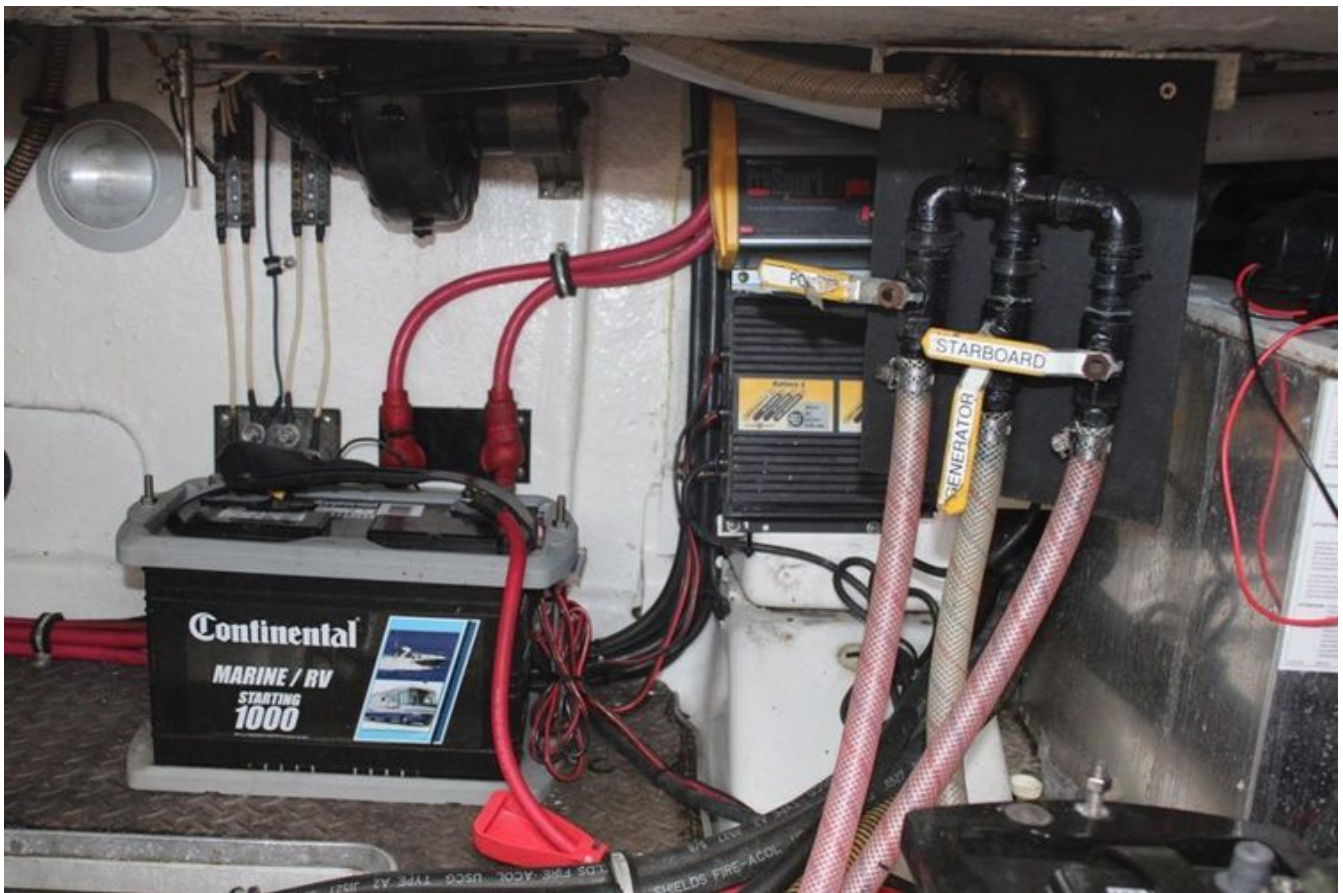
**Fuel Type:**

Gas

# GALLERY











# CONTACTS

---

Shestakov Yacht Sales is a brokerage company specializing in the sale and service of yachts worldwide. The company offers services for buying and selling both new and used motor yachts, sailing vessels, and luxury superyachts. They also provide yacht registration, insurance, technical maintenance, crew selection, and charter organization services across the U.S., Canada, Latin America, the Caribbean, and the Bahamas.

The founder and lead broker of the company is Andrey Shestakov, a licensed and certified expert with extensive experience in marine engineering and shipbuilding.

The company has an extensive network of partnerships with major yacht manufacturers worldwide and provides services in multiple languages, including Russian, Ukrainian, Spanish, and English. The office is in Dania Beach, Florida, USA.

For more information and to view available yachts, you can visit the company's official website: <https://shestakovyachtsales.com>

## Contact details

---

**Phone:** +1(954)274-4435

**Email:** [andrey@shestakovyachtsales.com](mailto:andrey@shestakovyachtsales.com)

## Address

---



1380 Weeping Willow Way, Hollywood,  
Florida 33019