



SHESTAKOV

Yacht Sales

40 CONVERTIBLE – GAMEFISHERMAN



Builder:

GAMEFISHERMAN

Model:

40 CONVERTIBLE

LOA:

40' 0" (12.19 m)

Beam:

13' 0" (4.01 m)

Max Draft:

10' 1" (3.08 m)

Cruise Speed:

28 kn / 32.22 mph

Water Capacity:

50 Gallons

Fuel Capacity:

400 Gallons

Sleeps:

3

Total Heads:

1

Hull Material:

Wooden Yachts

Deck Material:

Wood

If you would like to buy a yacht **40 CONVERTIBLE – GAMEFISHERMAN** or would like help, please call +1(954)274-4435 or visit shestakovyachtsales.com

TABLE OF CONTENTS

OVERVIEW 3

- Selecting a 40 CONVERTIBLE 3
- Features of the Model 3
- Technical Specifications 4
- Pricing and Ordering 4
- Questions and Answers 5
- Owner Experience Review 5
- Pros and Cons 6
- Comparison with Other Models 7

SPECIFICATIONS 8

GALLERY 9

CONTACTS 14

OVERVIEW

The 40 CONVERTIBLE from GAMEFISHERMAN is a purposeful motor yacht arranged as a sportfisher and constructed with a wooden hull. Equipped with twin inboard Cummins diesel engines and a pronounced deep V underbody, it provides a blend of seakeeping ability and onboard liveability for three people—equally at home chasing offshore fish or cruising comfortably. For availability and expert advice, reach out to Andrey Shestakov at Shestakov Yacht Sales.

Selecting a 40 CONVERTIBLE

Opt for the 40 CONVERTIBLE if you need a compact offshore platform that marries the handling traits of a deep V hull with the classic feel of a wooden hull. Powered by twin inboard Cummins diesels and crafted by GAMEFISHERMAN, this model occupies a practical niche in the motor yacht segment as a dedicated sportfisher. For assessment, viewing options, and next steps, contact Andrey Shestakov and the team at Shestakov Yacht Sales.

Features of the Model

- Purpose-built as a sportfisher within the broader motor yacht class by GAMEFISHERMAN.
- Deep Vee hull arrangement executed in wooden yacht construction; deckwork finished in wood.
- Twin inboard Cummins diesel powerplants providing dependable cruise and range.
- Cruise speed rated at 28 knots (about 32.22 mph).
- Sleeps 3 with a single head for efficient overnighting.
- Capacities tailored to fishing and short cruises: 400 gal fuel, 50 gal water.

- Compact overall dimensions: LOA 40 ft (12.19 m), beam 13 ft (4.01 m), maximum draft 10.116 ft (3.0833 m).

Technical Specifications

- Model: 40 CONVERTIBLE
- Builder: GAMEFISHERMAN
- Category: motor yacht
- Type: sportfisher
- Hull material/category: wooden yacht
- Deck material: Wood
- Hull configuration: Deep Vee
- LOA: 40 ft (12.19 m)
- Beam: 13 ft (4.01 m)
- Draft (max): 10.116 ft (3.0833 m)
- Cruise speed: 28 kn (32.22 mph)
- Engines: 2 x Cummins, Inboard, Diesel
- Sleeps: 3
- Heads: 1
- Fuel capacity: 400 gal
- Water capacity: 50 gal

Pricing and Ordering

To obtain up to date pricing, current availability, or to initiate the purchase process for a motor yacht such as the 40 CONVERTIBLE by GAMEFISHERMAN, please contact Andrey Shestakov at Shestakov Yacht Sales. Our brokerage will walk you through delivery timelines, survey arrangements, and all necessary documentation to facilitate a smooth transaction.

Questions and Answers

Q: What type of yacht is the 40 CONVERTIBLE? A: It is a motor yacht laid out as a sportfisher built on a wooden hull by GAMEFISHERMAN. This combination supports dedicated fishing operations while remaining suitable for family cruising, featuring a **Deep Vee** running surface.

Q: What are the key dimensions of the 40 CONVERTIBLE? A: The **LOA** measures 40 ft (12.19 m), **beam** is 13 ft (4.01 m), and **maximum draft** is 10.116 ft (3.0833 m), giving the vessel a compact profile with respectable waterline length for a **40 footer**

Q: What is the cruising performance? A: The listed **cruise speed** is 28 kn (approximately 32.22 mph), a practical pace for day runs to productive grounds and for comfortable coastal passages.

Q: What propulsion does it use? A: Propulsive power is provided by **2 x Cummins inboard diesel** engines, reflecting the model's focus on dependable, serviceable systems from GAMEFISHERMAN.

Q: How many does it sleep and what are the capacities? A: The layout **sleeps 3** with **1 head** , and carries **400 gal fuel** and **50 gal water** , matching the needs of dedicated fishing trips and weekend passages. To arrange a viewing or to inspect a wooden yacht example, contact Andrey Shestakov at Shestakov Yacht Sales.

Owner Experience Review

Owners and experienced charter skippers often describe the 40 CONVERTIBLE by GAMEFISHERMAN as a working boat with tournament pedigree. Boats based in Kona have recorded strong results, and brokerage listings show examples operating offshore in Costa Rica and at remote Pacific atolls. Typical

owner reports indicate a cruise band of 24–28 knots with a top end in the low 30s, and praise a lively, agile helm paired with bluewater seakeeping that exceeds expectations for a vessel of this size.

Accommodations prioritize fishing operations but remain adequate for short cruises: belowdecks layouts commonly feature single bunks to port and starboard with the head located forward, and a salon/galley designed for brief stays. Many owners fit practical upgrades over time—raised dinettes, settees, mezzanine seating, additional refrigeration, and salon air conditioning—while the traditional teak and mahogany joinery offers Palm Beach aesthetics at the expense of added maintenance.

Maintenance expectations are straightforward. The cold-molded wood/epoxy construction responds well to regular upkeep and occasional touchups to teak, and onboard systems are typically simple enough for owner servicing—an advantage when operating far from shipyard support. Older vessels in the market often show evidence of major refits (engines, electronics, topside paint, mezzanine work), so prospective buyers should allow budget for refurbishment. There are no widely reported, recurring systemic failures; public owner discussion is more limited than commentary from brokers, the builder, and charter operators.

Pros and Cons

- Proven platform for offshore tournaments and commercial charter, with documented Kona successes.
- Engaging, responsive ride with reported cruise speeds of 24–28 knots and top speeds in the low 30s.
- Genuine bluewater capability and range, with listings frequently showing roughly 400 gallons of fuel capacity.
- Compact, fishing-first accommodations that may feel tight for extended

cruising.

- Cold molded hull and teak/mahogany interior require periodic attention and ongoing maintenance.
- Many older examples will either need or have already undergone substantial refits to engines, electronics, topsides, and mezzanine areas.

Comparison with Other Models

Model	LOA	Beam	Draft	Speed (Cruising/Max)	Gross Tonnage
Express	50' 0" (15.24 m)	15' 0" (4.83 m)	14' 9" (4.50 m)		
26 Cuddy Cabin	26' 0" (7.92 m)	9' 0" (2.74 m)	6' 7" (2 m)		
Walk Around	37' 0" (11.30 m)	10' 0" (3.05 m)			
40 CONVERTIBLE	40' 0" (12.19 m)	13' 0" (4.01 m)	10' 1" (3.08 m)	28 kn	

SPECIFICATIONS

LOA:

40' 0" (12.19 m)

Max Draft:

10' 1" (3.08 m)

Cruise Speed:

28 kn / 32.22 mph

Fuel Capacity:

400 Gallons

Sleeps:

3

Hull Material:

Wooden Yachts

Hull Configuration:

Deep Vee

Engines:

2

Engine Type:

Inboard

Beam:

13' 0" (4.01 m)

Water Capacity:

50 Gallons

Total Heads:

1

Deck Material:

Wood

Manufacturer:

Cummins

Fuel Type:

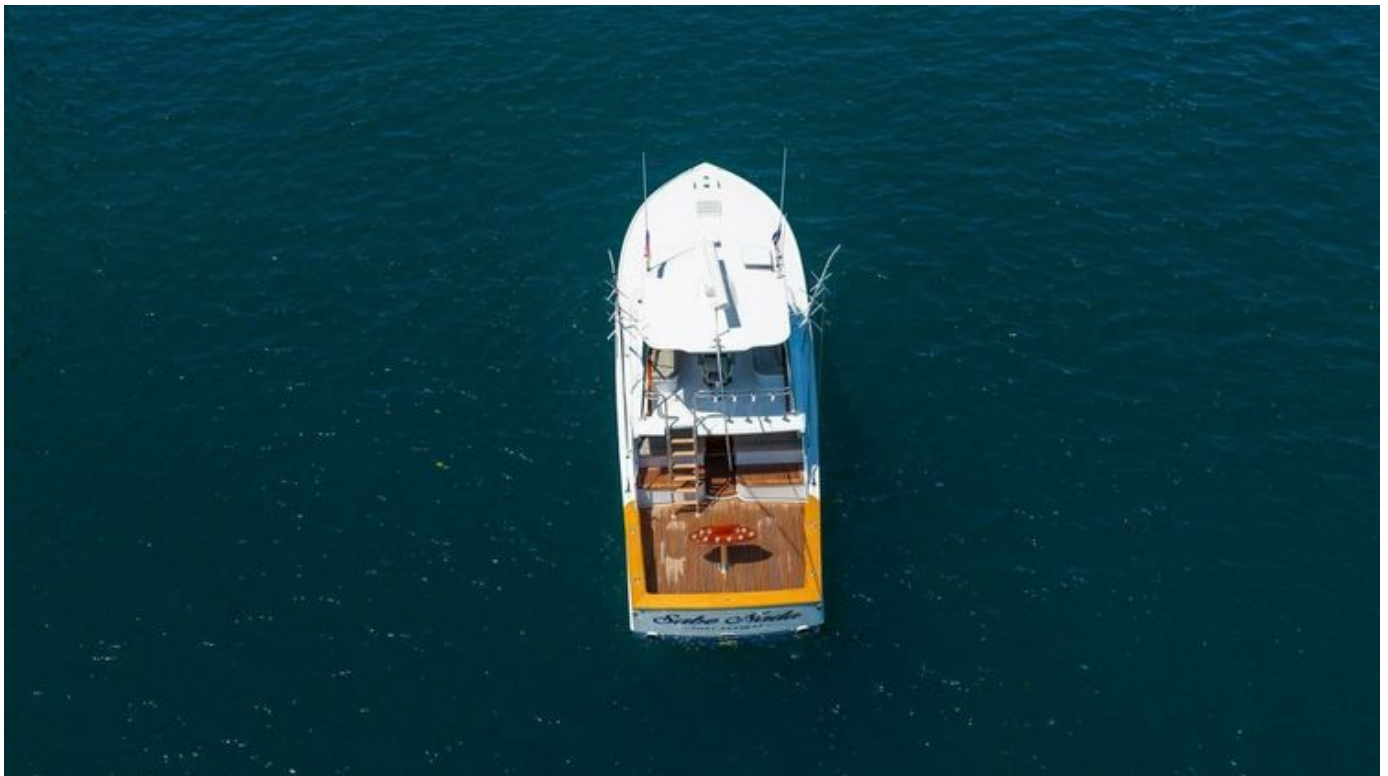
Diesel

GALLERY











CONTACTS

Shestakov Yacht Sales is a brokerage company specializing in the sale and service of yachts worldwide. The company offers services for buying and selling both new and used motor yachts, sailing vessels, and luxury superyachts. They also provide yacht registration, insurance, technical maintenance, crew selection, and charter organization services across the U.S., Canada, Latin America, the Caribbean, and the Bahamas.

The founder and lead broker of the company is Andrey Shestakov, a licensed and certified expert with extensive experience in marine engineering and shipbuilding.

The company has an extensive network of partnerships with major yacht manufacturers worldwide and provides services in multiple languages, including Russian, Ukrainian, Spanish, and English. The office is in Dania Beach, Florida, USA.

For more information and to view available yachts, you can visit the company's official website: <https://shestakovyachtsales.com>

Contact details

Phone: +1(954)274-4435

Email: andrey@shestakovyachtsales.com

Address



1380 Weeping Willow Way, Hollywood,
Florida 33019