



SHESTAKOV

Yacht Sales

14 X 50 STANDARD – GIBSON



Builder:

GIBSON

Model:

14 x 50 Standard

LOA:

50' 0" (15.24 m)

Min Draft:

9' 10" (3 m)

Beam:

13' 0" (4.22 m)

Max Draft:

9' 10" (3 m)

Water Capacity:

100 Gallons

Fuel Capacity:

240 Gallons

Sleeps:

4

Total Heads:

2

Hull Material:

Fiberglass and Plastic Yachts

Deck Material:

Fiberglass

If you would like to buy a yacht **14 X 50 STANDARD – GIBSON** or would like help, please call +1(954)274-4435 or visit shestakovyachtsales.com

TABLE OF CONTENTS

OVERVIEW 3

- Selecting a 14 x 50 Standard 3
- Features of the Model 3
- Technical Specifications 4
- Pricing and Ordering 4
- Questions and Answers 5
- Owner Experience Review 5
- Pros and Cons 6
- Comparison with Other Models 7

SPECIFICATIONS 8

GALLERY 9

CONTACTS 14

OVERVIEW

The 14 x 50 Standard from GIBSON is a multi-purpose motor yacht-class houseboat built on a fiberglass-and-plastic hull and driven by twin inboard Crusader gasoline engines in a planing-hull layout. Listed by Shestakov Yacht Sales with broker Andrey Shestakov, it blends practical cruising performance with roomy liveboard accommodations.

Selecting a 14 x 50 Standard

Opting for the 14 x 50 Standard is logical if you prioritize abundant interior volume within a 50 ft platform, straightforward inboard powerplants, and utility for extended stays aboard. As a houseboat within the motor yacht category, it's designed for relaxed social cruising and comfortable liveboard use, accommodating up to eight people with practical tank capacities for multi-day outings.

Features of the Model

- Category and concept: a motor yacht arranged as a comfortable houseboat geared toward easygoing cruising and liveboard comfort.
- Construction: fiberglass-and-plastic construction featuring a fiberglass deck and a planing hull form for predictable handling and decent on plane performance.
- Dimensions: 50 ft LOA and 13 ft beam (15.24 m x 4.22 m) provide expansive interior volume and generous deck areas.
- Powertrain: twin Crusader inboard engines (Gas/Petrol) offering well understood serviceability and smooth thrust.
- Liveability: designed to accommodate up to 8 people, with sleeping arrangements for 4 and 2 heads for onboard convenience.

- Capacities: 240 gallons of fuel and 100 gallons of fresh water to support extended weekends and short coastal cruises.

Technical Specifications

- Model: 14 x 50 Standard
- Builder: GIBSON
- Category: motor yacht; Sub-category: houseboat
- Hull: fiberglass and plastic; Deck material: Fiberglass
- Hull configuration: Planing
- LOA: 50 ft (15.24 m)
- Beam: 13 ft (4.22 m)
- Draft (min/max): 9.843 ft (3 m) / 9.843 ft (3 m)
- Engines: 2 x Crusader
- Engine type: Inboard
- Fuel type: Gas/Petrol
- Accommodation count: 8
- Sleeps: 4
- Heads: 2
- Fuel capacity: 240 gal
- Water capacity: 100 gal

Pricing and Ordering

To obtain up-to-date pricing, confirm availability, or schedule an inspection of the 14 x 50 Standard by GIBSON, please contact Andrey Shestakov at Shestakov Yacht Sales. Our brokerage will assist you with offers, documentation, surveys, and delivery planning tailored to your intended use.

Questions and Answers

- What type of boat is the 14 x 50 Standard? **Type:** It's a motor yacht configured as a houseboat, constructed with a fiberglass and plastic hull and built on a planing hull by GIBSON.
- How many people can it accommodate and sleep? **Accommodation:** Capacity for up to 8 people onboard, with **sleeps** for 4 and **2 heads** to serve guests and crew.
- What engines and fuel does it use? **Engines:** Twin **Crusader Inboard** engines operating on **Gas/Petrol** , supported by a **fuel capacity** of 240 gallons.
- What are the key dimensions and draft? **Dimensions and draft:** LOA **50 ft (15.24 m)** , beam **13 ft (4.22 m)** ; draft **9.843 ft (3 m)** minimum and maximum.
- How do I purchase through Shestakov Yacht Sales? **Ordering:** Contact **Andrey Shestakov** at **Shestakov Yacht Sales** to review availability, arrange inspections, and complete purchase steps for the 14 x 50 Standard by GIBSON.

Owner Experience Review

Owners of the 14 x 50 Standard by GIBSON frequently cite its adaptability for family outings and entertaining on lakes and protected coastal waterways. Common uses include weekend trips, overnight anchoring with friends, and social raft-ups; many owners also carry a small dinghy or Whaler for shore access and watersports, and some operate their Gibsons for multi day voyages, live aboard periods, ICW transits, and attempted segments of the Great Loop.

On the water, owners report the 14x50 feels more like a conventional boat than a pontoon or condo-style houseboat when used in sheltered conditions and on the ICW. The shallow V, relatively flat bow design allows it to plane and achieve brisk cruising speeds when fitted with twin 8.1L or 5.7L V8s, with owner/GPS reports near 28 knots (30–31 mph). That said, several owners warn

the hull form is sensitive to wind, docking can require practice, and a common refrain is, “If it’s blowin’ we ain’t goin’.”

Inside, owners praise the roomy salon and expansive deck areas with family-friendly sleeping configurations—examples include a king berth in the master, additional queen berths, and sleeping capacity for roughly 6–8. Many 14x50 layouts include full galleys equipped with full-size appliances, and generous deck and catwalk access makes handling lines and moving about easier even with limited crew. Maintenance realities are also frequently mentioned: older examples often exhibit soft or rotten decking and delaminated plywood beneath coverings; leaks around deck or engine hatches and corroded plumbing fittings have resulted in interior rot and occasional bilge problems. Typical propulsion is twin Crusader or Mercruiser V8s with Westerbeke generators; owners recommend verifying engine and generator hours because repower or major overhauls can be expensive. Common repairs noted by owners include replacing marine-grade plywood with epoxy and fiberglass cloth, sealing fittings with adhesives such as 3M 5200, and engaging a professional boatyard for significant structural work.

Pros and Cons

- Spacious salon and deck areas support comfortable family cruising and entertaining with flexible sleeping arrangements.
- Feels more boat-like than pontoon-style houseboats for sheltered water cruising and ICW passages.
- Suited to live-aboard use with full galley options, often full-size appliances, and helpful deck/catwalk access.
- Performance is wind-sensitive; owners typically avoid strong conditions and note a learning curve for docking.
- Older vessels commonly show soft or delaminated decks and leak points around hatches, which can lead to interior rot.

- Typical V8 engines and on board generators require careful scrutiny of hours and condition, as repower or major servicing can be costly.

Comparison with Other Models

Model	LOA	Beam	Draft	Speed (Cruising/ Max)	Gross Tonnage
37 Sport Series	37' 0" (11.28 m)	14' 0" (4.27 m)	7' 8" (2.33 m) – 9' 10" (3 m)		
50	50' 0" (15.24 m)	14' 0" (4.27 m)			
14 x 50 Standard	50' 0" (15.24 m)	13' 0" (4.22 m)	9' 10" (3 m)		

SPECIFICATIONS

LOA:

50' 0" (15.24 m)

Beam:

13' 0" (4.22 m)

Water Capacity:

100 Gallons

Sleeps:

4

Hull Material:

Fiberglass and Plastic Yachts

Hull Configuration:

Planing

Engines:

2

Engine Type:

Inboard

Min Draft:

9' 10" (3 m)

Max Draft:

9' 10" (3 m)

Fuel Capacity:

240 Gallons

Total Heads:

2

Deck Material:

Fiberglass

Manufacturer:

Crusader

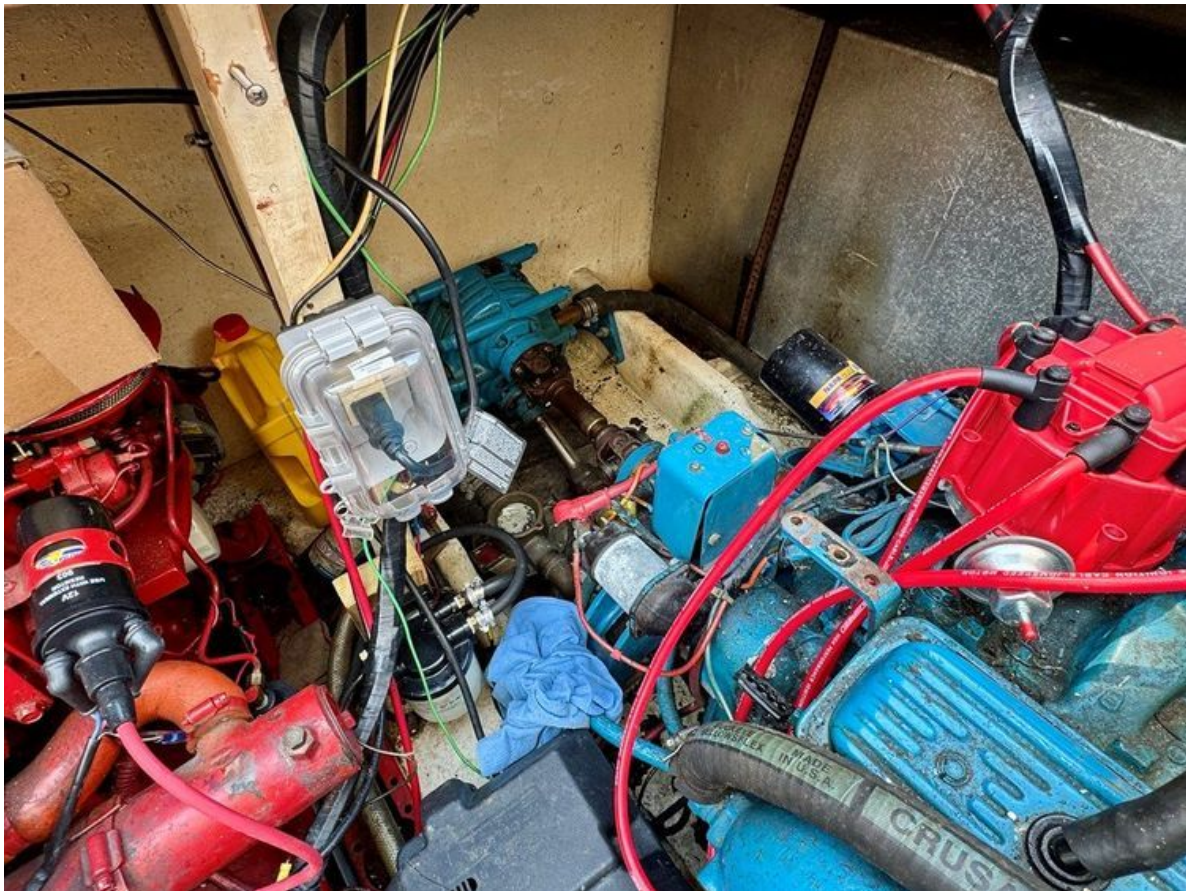
Fuel Type:

Gas/Petrol

GALLERY











CONTACTS

Shestakov Yacht Sales is a brokerage company specializing in the sale and service of yachts worldwide. The company offers services for buying and selling both new and used motor yachts, sailing vessels, and luxury superyachts. They also provide yacht registration, insurance, technical maintenance, crew selection, and charter organization services across the U.S., Canada, Latin America, the Caribbean, and the Bahamas.

The founder and lead broker of the company is Andrey Shestakov, a licensed and certified expert with extensive experience in marine engineering and shipbuilding.

The company has an extensive network of partnerships with major yacht manufacturers worldwide and provides services in multiple languages, including Russian, Ukrainian, Spanish, and English. The office is in Dania Beach, Florida, USA.

For more information and to view available yachts, you can visit the company's official website: <https://shestakovyachtsales.com>

Contact details

Phone: +1(954)274-4435

Email: andrey@shestakovyachtsales.com

Address



1380 Weeping Willow Way, Hollywood,
Florida 33019