



SHESTAKOV

Yacht Sales

CENTER CONSOLE CHASE 273 – GRADY-WHITE BOATS



Builder:

Grady-White Boats

Model:

Center Console Chase 273

LOA:

27' 0" (8.23 m)

Min Draft:

4' 1" (1.25 m)

Beam:

8' 0" (2.59 m)

Water Capacity:

20 Gallons

Fuel Capacity:

205 Gallons

Total Heads:

1

Hull Material:

Fiberglass and Plastic Yachts

Deck Material:

Fiberglass

Engines:

2

Manufacturer:

Yamaha

If you would like to buy a yacht **CENTER CONSOLE CHASE 273 – Grady-White Boats** or would like help, please call +1(954)274-4435 or visit shestakovyachtsales.com

TABLE OF CONTENTS

OVERVIEW	3
Selecting a Center Console Chase 273	3
Features of the Model	3
Technical Specifications	4
Pricing and Ordering	4
Questions and Answers	4
Owner Experience Review	5
Pros and Cons	6
Comparison with Other Models	7
SPECIFICATIONS	8
GALLERY	9
CONTACTS	14

OVERVIEW

Built by Grady-White Boats, the Center Console Chase 273 is a multi-role motor yacht laid out around a purposeful center console layout and set on a rugged fiberglass hull. Listed by Shestakov Yacht Sales with broker Andrey Shestakov, this model offers dependable performance for day trips, sport fishing, and coastal adventures.

Selecting a Center Console Chase 273

Opting for the Center Console Chase 273 means choosing a compact platform that's trailerable yet capable. As a motor yacht centered on a center console layout, it prioritizes unobstructed 360-degree movement around the deck and straightforward helm operation. The fiberglass hull underscores longevity and low-maintenance upkeep, while twin Yamaha outboards provide lively responsiveness and the redundancy owners expect for confident coastal passages.

Features of the Model

- Dimensions optimized for access: LOA 27 ft (8.23 m); beam 8 ft (2.59 m); draft 4.101 ft (1.25 m).
- Power and control: twin Yamaha outboards (gas) for reliable, efficient propulsion and simple service.
- Practical capacities: 205 gal fuel and 20 gal fresh water to support full-day outings.
- Essential comfort: 1 head for convenience on board.
- Robust build: fiberglass hull with a fiberglass deck for strength and low upkeep.
- Purposeful configuration: a true motor yacht with a clean, open center

console deck plan.

Technical Specifications

- Builder: Grady-White Boats
- Model: Center Console Chase 273
- Type: motor yacht
- Layout: center console
- Hull: fiberglass
- Deck: Fiberglass
- LOA: 27 ft (8.23 m)
- Beam: 8 ft (2.59 m)
- Draft (min): 4.101 ft (1.25 m)
- Engines: 2 x Yamaha, Outboard, Gas
- Heads: 1
- Fuel capacity: 205 gal
- Water capacity: 20 gal

Pricing and Ordering

For information on pricing, current availability, inspections, and delivery options for the Center Console Chase 273, reach out to Andrey Shestakov and the Shestakov Yacht Sales team. We handle appointment scheduling, coordinate survey support, and organize logistics to suit your timeline and cruising intentions.

Questions and Answers

Q: What kind of yacht is the Center Console Chase 273? A: It's a motor yacht built around a center console layout on a resilient fiberglass hull. This

combination emphasizes **versatility** , **easy handling** , and **deck access** .

Q: Who builds this model? A: The Center Console Chase 273 is produced by Grady-White Boats, a builder known for **quality construction** and **reliable engineering** .

Q: How is it powered? A: Propulsion comes from **twin Yamaha outboards** running on **gas** , delivering responsive performance and straightforward maintenance.

Q: What are the key dimensions and draft? A: The boat's **LOA** is 27 ft (8.23 m), **beam** is 8 ft (2.59 m), and **draft (min)** is 4.101 ft (1.25 m), balancing stability with access to varied waters.

Q: What capacities and amenities does it include? A: You get a **fuel capacity** of 205 gal, **fresh water** capacity of 20 gal, and a **head** (1) for essential comfort underway.

Owner Experience Review

Owners are drawn to the Center Console Chase 273 for its ability to blend family-friendly cruising with dedicated fishing capability. The forward seating converts to a casting platform, there's a walk-in head fitted with a Porta-Potti and a freshwater sink, and a fold-away transom seat simplifies guest boarding. The cockpit is tailored for anglers with a built-in 32-gallon livewell, a transom fishbox, under-gunwale rod storage, and a leaning post equipped with rocket-launcher rod holders. A pop-up electronics console keeps displays sheltered, though owners commonly note limited radar options and fewer pre-planned mounting points.

On the water, testers and long-term owners praise the SeaV2 variable-V hull, its faired bottom, and the extended running surface for improved wave handling and straight-line tracking; many report the boat feels very balanced

and seaworthy rather than an outright speed machine. Performance varies with propulsion choices: some setups with twin 150s have been reported to approach roughly 45 mph in certain conditions, while twin Yamaha 250s offer robust overall performance. It's not marketed as a top-speed racer but provides a confident cruise and offshore composure.

Due diligence is particularly important with older hulls. Owners' forums frequently warn about transom/core moisture and potential delamination that can necessitate engine removal and extensive labor to repair, despite easier bilge and systems inspection via the liftable transom-seat/fishbox hatch. Original wiring is another area many owners recommend checking or improving. Prospective buyers are advised to commission a full marine survey including engine compression checks, with transom repairs, rewiring, and engine work among the most commonly cited cost items.

Pros and Cons

- Versatile dual-purpose layout supports family cruising and serious inshore/offshore fishing.
- SeaV2 variable-V hull delivers a balanced, comfortable ride with confident wave handling and tracking.
- Useful bilge and systems access via the liftable transom-seat/fishbox hatch for routine service.
- Not a go-fast boat, with overall performance dependent on engine selection rather than top-speed thrills.
- Older examples warrant careful transom/core inspections due to reported moisture and delamination issues.
- Original wiring quality is a known weak point that often benefits from inspection and upgrades.

Comparison with Other Models

Model	LOA	Beam	Draft	Speed (Cruising/Max)	Gross Tonnage
Center Console Chase 273	27' 0" (8.23 m)	8' 0" (2.59 m)	4' 1" (1.25 m)		
Islander	26' 0" (8.20 m)	8' 0" (2.59 m)	4' 11" (1.50 m) – 6' 7" (2 m)	25 kn / 40 kn	3
Freedom 375	37' 0" (11.43 m)	13' 0" (4.01 m)	7' 11" (2.42 m) – 32' 6" (9.92 m)		
283 Release	28' 0" (8.53 m)	9' 0" (2.90 m)	59' 1" (18 m)	40 kn	
Gulfstream	23' 0" (7.01 m)	9' 0" (2.84 m)	4' 11" (1.50 m)		
230 Fisherman	23' 0" (7.01 m)				

SPECIFICATIONS

LOA:

27' 0" (8.23 m)

Beam:

8' 0" (2.59 m)

Water Capacity:

20 Gallons

Total Heads:

1

Hull Material:

Fiberglass and Plastic Yachts

Engines:

2

Engine Type:

Outboard

Min Draft:

4' 1" (1.25 m)

Fuel Capacity:

205 Gallons

Deck Material:

Fiberglass

Manufacturer:

Yamaha

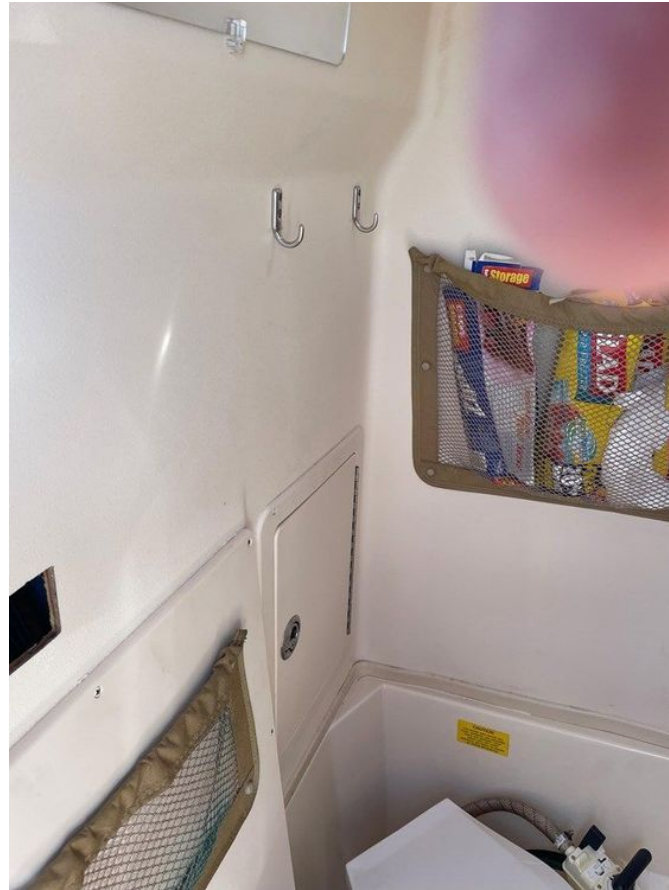
Fuel Type:

Gas

GALLERY











CONTACTS

Shestakov Yacht Sales is a brokerage company specializing in the sale and service of yachts worldwide. The company offers services for buying and selling both new and used motor yachts, sailing vessels, and luxury superyachts. They also provide yacht registration, insurance, technical maintenance, crew selection, and charter organization services across the U.S., Canada, Latin America, the Caribbean, and the Bahamas.

The founder and lead broker of the company is Andrey Shestakov, a licensed and certified expert with extensive experience in marine engineering and shipbuilding.

The company has an extensive network of partnerships with major yacht manufacturers worldwide and provides services in multiple languages, including Russian, Ukrainian, Spanish, and English. The office is in Dania Beach, Florida, USA.

For more information and to view available yachts, you can visit the company's official website: <https://shestakovyachtsales.com>

Contact details

Phone: +1(954)274-4435

Email: andrey@shestakovyachtsales.com

Address



1380 Weeping Willow Way, Hollywood,
Florida 33019