



SHESTAKOV

Yacht Sales

49 EASTBAY HX – GRAND BANKS MARINE



Builder:

GRAND BANKS MARINE

Model:

49 Eastbay HX

LOA:

49' 0" (15.22 m)

Beam:

16' 0" (4.88 m)

Max Draft:

14' 3" (4.33 m)

Water Capacity:

176 Gallons

Fuel Capacity:

870 Gallons

Total Heads:

2

Hull Material:

Fiberglass and Plastic Yachts

Deck Material:

Fiberglass

Hull Configuration:

Semi-Displacement

Hull Designer:

C. Raymond Hunt

If you would like to buy a yacht **49 EASTBAY HX – GRAND BANKS MARINE** or would like help, please call +1(954)274-4435 or visit shestakovyachtsales.com

TABLE OF CONTENTS

OVERVIEW	3
Selecting a 49 Eastbay HX	3
Features of the Model	3
Technical Specifications	4
Pricing and Ordering	4
Questions and Answers	5
Owner Experience Review	5
Pros and Cons	6
Comparison with Other Models	7
SPECIFICATIONS	8
GALLERY	9
CONTACTS	14

OVERVIEW

Represented by Andrey Shestakov and Shestakov Yacht Sales, the 49 Eastbay HX from GRAND BANKS MARINE is a polished motor yacht offering classic lines on a sturdy fiberglass and plastic construction platform, engineered to deliver comfortable cruising and confident handling.

Selecting a 49 Eastbay HX

The 49 Eastbay HX is well suited to owners who appreciate a traditional motor yacht layout with manageable proportions—49 ft LOA and a 16 ft beam—and the proven performance of a semi-displacement hull penned by C. Raymond Hunt. Twin Caterpillar inboard diesels, ample fuel (870 gal) and water (176 gal) storage, plus sleeping for four and two heads, make it a practical choice for extended cruising within the broader motor yachts category. For questions about availability or to evaluate how this model fits your needs, contact Andrey Shestakov and the team at Shestakov Yacht Sales.

Features of the Model

- Semi-displacement hull by C. Raymond Hunt delivering an even balance of efficiency and seaworthiness for coastal and offshore passages.
- Twin Caterpillar inboard diesel powerplants providing dependable propulsion for cruising and passage-making.
- Dimensions crafted to fit many marinas: 49 ft LOA, 16 ft beam, and a draft of 14.217 ft.
- Hull fashioned in fiberglass and plastic construction complemented by a fiberglass deck for durability.
- A practical cruising interior with berths for four and two heads for comfortable liveaboard or weekend use.

- Significant tankage with 870 gallons of fuel and 176 gallons of fresh water for extended range and autonomy.
- Distinctive motor yacht styling characteristic of GRAND BANKS MARINE.

Technical Specifications

- Model: 49 Eastbay HX
- Builder: GRAND BANKS MARINE
- Category: motor yacht; Segment: motor yachts
- Hull material: Fiberglass and Plastic Yachts
- Deck material: Fiberglass
- Hull configuration: Semi-Displacement
- Hull designer: C. Raymond Hunt
- LOA: 49 ft (15.22 m)
- Beam: 16 ft (4.88 m)
- Draft (max): 14.217 ft (4.3333 m)
- Engines: 2 x Caterpillar, Inboard, Diesel
- Accommodation: 4
- Heads: 2
- Fuel capacity: 870 gal
- Water capacity: 176 gal

Pricing and Ordering

For up-to-date pricing, availability, or to schedule a private inspection of the 49 Eastbay HX, please reach out to Andrey Shestakov at Shestakov Yacht Sales. Our brokerage team will assist you through specifications review, paperwork, and negotiation so you can acquire the right vessel with confidence.

Questions and Answers

Q: What type of yacht is the 49 Eastbay HX? A: It is a motor yacht that sits within the wider class of motor yachts, designed to offer a compromise of onboard comfort and cruising capability.

Q: Who is the builder of this model? A: The 49 Eastbay HX was produced by GRAND BANKS MARINE, a marque noted for its attention to **craftsmanship** .

Q: What are the key hull details? A: The vessel is equipped with a **Semi-Displacement** hull conceived by **C. Raymond Hunt** , constructed in fiberglass and plastic construction and fitted with a **fiberglass** deck.

Q: What engines power the yacht? A: Propulsion is delivered by **two Caterpillar inboard diesel** engines engineered for reliable cruising performance.

Q: How many can sleep aboard and what are the capacities? A: The layout provides **accommodations for 4** with **2 heads** , and the yacht carries **870 gal** of fuel and **176 gal** of water. For viewings and purchase guidance, contact Andrey Shestakov at Shestakov Yacht Sales.

Owner Experience Review

Owners of the 49 Eastbay HX from GRAND BANKS MARINE frequently deploy these boats for family coastal cruising, weekend escapes, and social outings. The HX open hardtop/helm configuration keeps the steering station ventilated with generous visibility, while the expansive cockpit and substantial swim platform make boarding, accessing a tender, and hosting guests straightforward.

Below decks, the combination of warm teak joinery and a spacious two-cabin/two-head plan accommodates couples or small families

comfortably; the saloon and galley are laid out to function well both underway and at anchor. The substantial tankage and practical accommodations also permit longer passages or an extended liveaboard experience.

When underway, the Ray Hunt–influenced modified deep V hull is often praised for offering a stable, relatively dry ride offshore. Owners report a helm that feels steady and responsive, aiding control in chop and during close-quarters maneuvers. Reported cruise speeds vary with power choices; many owners and brokers cite a cruising range of about 19–24 knots, with certain Cummins or CAT engine installations achieving mid 20s at cruise and top speeds in excess of roughly 30 knots.

Routine maintenance is well understood among experienced buyers. Corrosion of fuel tanks has been noted on older Grand Banks models, with several owners recommending inspection and, if needed, replacement of original steel tanks. Major servicing for engines and gensets (commonly Caterpillar or Cummins) should be anticipated, and owners frequently call out maintenance of exterior teak/varnish, zincs, and antifouling as ongoing requirements. Positively, access to the engine room is generally regarded as favorable for servicing.

Pros and Cons

- Stable, relatively dry offshore ride thanks to the Ray Hunt modified deep V hull.
- HX open hardtop/helm offers excellent ventilation and unobstructed sightlines for day cruising.
- Warm teak joinery and a generous two cabin/two head arrangement make the interior suitable for couples, families, and entertaining.
- Fuel tank corrosion has been identified as an issue on older vessels; original tanks may need inspection or replacement.

- Engines and gensets require periodic major servicing, representing meaningful ownership costs.
- Exterior teak/varnish, zincs, and antifoul need regular attention to maintain appearance and performance.

Comparison with Other Models

Model	LOA	Beam	Draft	Speed (Cruising/Max)	Gross Tonnage
49 Eastbay HX	49' 0" (15.22 m)	16' 0" (4.88 m)	14' 3" (4.33 m)		
42 Classic	41' 0" (12.75 m)	13' 0" (4.14 m)	4' 2" (1.27 m)	10 kn / 12 kn	
Classic	42' 0" (12.98 m)	13' 0" (4.14 m)	13' 8" (4.17 m) – 14' 6" (4.42 m)	8 kn / 10 kn	34
36 Heritage Classic	40' 0" (12.32 m)	12' 0" (3.86 m)		11 kn / 14 kn	
42 Europa	42' 0" (12.80 m)	14' 0" (4.29 m)			
72 Aleutian RP	72' 0" (21.95 m)	19' 0" (6.04 m)	18' 1" (5.50 m)	18 kn / 24 kn	
Grand Banks 43	43' 0" (13.19 m)	15' 0" (4.77 m)	3' 11" (1.20 m)	8 kn / 24 kn	16.7
36 Classic	36' 0" (11.23 m)	12' 0" (3.86 m)	13' 1" (4 m)		
Eastbay 38	38' 0" (11.58 m)	13' 0" (4.01 m)	10' 11" (3.33 m)	22 kn / 29 kn	
Eastbay 54 SX	54' 0" (16.46 m)	16' 0" (4.88 m)	11' 6" (3.50 m) – 14' 9" (4.50 m)	20 kn / 24 kn	66

SPECIFICATIONS

LOA:

49' 0" (15.22 m)

Max Draft:

14' 3" (4.33 m)

Water Capacity:

176 Gallons

Total Heads:

2

Hull Material:

Fiberglass and Plastic Yachts

Hull Configuration:

Semi-Displacement

Engines:

2

Engine Type:

Inboard

Beam:

16' 0" (4.88 m)

Fuel Capacity:

870 Gallons

Deck Material:

Fiberglass

Hull Designer:

C. Raymond Hunt

Manufacturer:

Caterpillar

Fuel Type:

Diesel

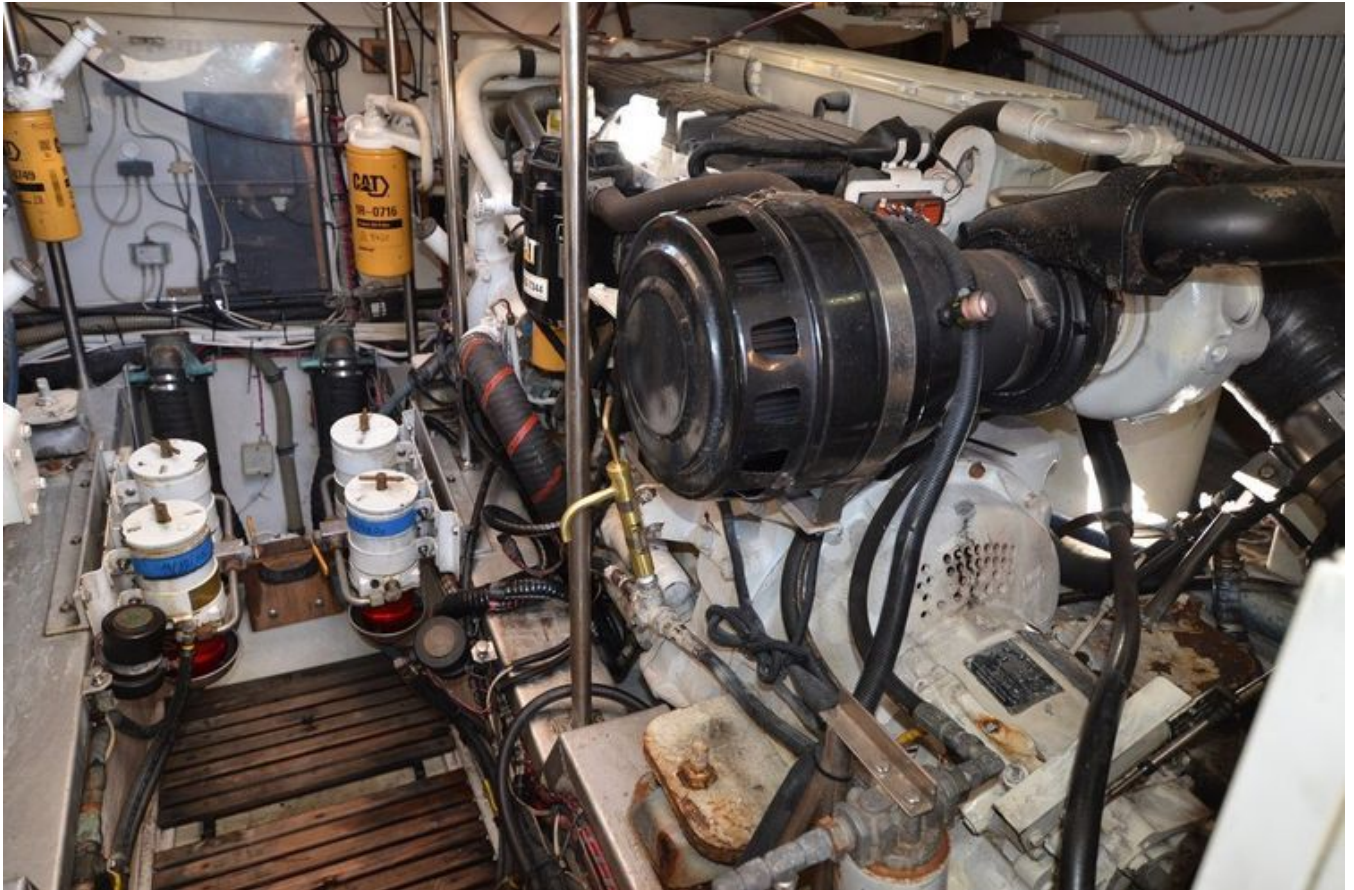
GALLERY











CONTACTS

Shestakov Yacht Sales is a brokerage company specializing in the sale and service of yachts worldwide. The company offers services for buying and selling both new and used motor yachts, sailing vessels, and luxury superyachts. They also provide yacht registration, insurance, technical maintenance, crew selection, and charter organization services across the U.S., Canada, Latin America, the Caribbean, and the Bahamas.

The founder and lead broker of the company is Andrey Shestakov, a licensed and certified expert with extensive experience in marine engineering and shipbuilding.

The company has an extensive network of partnerships with major yacht manufacturers worldwide and provides services in multiple languages, including Russian, Ukrainian, Spanish, and English. The office is in Dania Beach, Florida, USA.

For more information and to view available yachts, you can visit the company's official website: <https://shestakovyachtsales.com>

Contact details

Phone: +1(954)274-4435

Email: andrey@shestakovyachtsales.com

Address



1380 Weeping Willow Way, Hollywood,
Florida 33019