



SHESTAKOV

Yacht Sales

CLASSIC – GRAND BANKS MARINE



Builder:

GRAND BANKS MARINE

Model:

Classic

LOA:

42' 0" (12.98 m)

Min Draft:

13' 8" (4.17 m)

Beam:

13' 0" (4.14 m)

Max Draft:

14' 6" (4.42 m)

Cruise Speed:

8 kn / 9.21 mph

Max Speed:

10 kn / 11.51 mph

Gross Tonnage:

34 Pounds

Water Capacity:

265 Gallons

Fuel Capacity:

600 Gallons

Sleeps:

4

If you would like to buy a yacht **CLASSIC – GRAND BANKS MARINE** or would like help, please call +1(954)274-4435 or visit shestakovyachtsales.com

TABLE OF CONTENTS

OVERVIEW 3

- Selecting a Classic 3
- Features of the Model 3
- Technical Specifications 4
- Pricing and Ordering 4
- Questions and Answers 5
- Owner Experience Review 5
- Pros and Cons 6
- Comparison with Other Models 6

SPECIFICATIONS 8

GALLERY 9

CONTACTS 14

OVERVIEW

The Classic from GRAND BANKS MARINE is a 42 ft semi-displacement motor yacht that carries the purposeful DNA of a traditional trawler, built upon a stout fiberglass hull. Offered through Shestakov Yacht Sales with broker Andrey Shestakov, it delivers economical passagemaking while providing comfortable living space for four.

Selecting a Classic

When evaluating the Classic, you're choosing a vessel noted for steady handling, fuel-efficient cruising around 8 knots, and the gentle motion characteristic of a Semi-Displacement hull. Its twin Caterpillar inboard diesels, straightforward systems, and a practical layout with sleeping space for four and two heads make it attractive for owners pursuing long-range motor yacht or dedicated trawler cruising. Reach out to Andrey Shestakov at Shestakov Yacht Sales to match the yacht's capabilities to your voyage plans and to review current availability.

Features of the Model

- Semi-Displacement hull by designer Ken Smith for a balance of fuel economy and onboard comfort.
- Interior appointments by Grand Banks providing accommodations for 4 and two heads.
- Twin inboard Caterpillar diesel engines delivering dependable propulsion.
- Durable fiberglass construction with fiberglass decks for longevity.
- Capacities designed for extended time aboard: 600 gallons of fuel and 265 gallons of water.

Technical Specifications

- Length Overall (LOA): 42 ft (12.98 m)
- Beam: 13 ft (4.14 m)
- Draft (min/max): 13.681 ft (4.17 m) / 14.501 ft (4.42 m)
- Hull Configuration: Semi-Displacement
- Hull Material: fiberglass
- Deck Material: Fiberglass
- Cruise Speed: 8 kn (9.21 mph)
- Max Speed: 10 kn (11.51 mph)
- Gross Tonnage: 34
- Engines: 2 x Caterpillar, Inboard, Diesel
- Hull Designer: Ken Smith
- Interior Designer: Grand Banks
- Accommodations: 4
- Sleeps: 4
- Heads: 2
- Fuel Capacity: 600 gal
- Water Capacity: 265 gal

Pricing and Ordering

For pricing details, current availability, purchasing information, and to arrange inspections of the Classic by GRAND BANKS MARINE, please contact Andrey Shestakov at Shestakov Yacht Sales. Our team will assist you with specifications, optional equipment, and the steps required to secure the right yacht for your cruising program.

Questions and Answers

Q: What type of yacht is the Classic? A: It's a motor yacht rooted in a true trawler pedigree, built on a **Semi-Displacement** hull with a robust fiberglass build.

Q: How fast does it cruise and what is the top speed? A: The **Cruise Speed** is **8 kn (9.21 mph)** and the **Max Speed** is **10 kn (11.51 mph)** .

Q: What powers the yacht? A: The yacht is driven by **2 engines** from **Caterpillar** , installed **Inboard** and running on **Diesel** .

Q: How many people can stay aboard comfortably? A: The layout provides accommodations for **4** , with **Sleeps: 4** and **Heads: 2** , making it well suited for family or guest use.

Q: What capacities and design credits stand out? A: Key specifications include **Fuel 600 gal** and **Water 265 gal** ; design credits list **Hull Designer: Ken Smith** and **Interior Designer: Grand Banks** . For additional information and to schedule viewings, contact Andrey Shestakov at Shestakov Yacht Sales.

Owner Experience Review

Owners report the Classic from GRAND BANKS MARINE as a reliable family and coastal cruiser, equally comfortable on Inside Passage-style itineraries, longer multi-week coastal runs, or as a straightforward weekend liveaboard.

Underway it behaves like a displacement/semi-displacement hull—most operators settle into an efficient 7–9-knot cruising range. Some owners say they “can make 10kn after launch” but typically prefer 7–8 knots for a more pleasant experience. The hull generally offers seakindly behavior and the deck layout is considered safe, though many note the vessel tends to roll in a beam sea unless fitted with stabilizers, so many owners retrofit them.

Aboard, owners frequently praise the uncrowded interior feel, the spacious salon and galley flow, and the warmth of full teak joinery—while also reminding prospective buyers that teak demands regular maintenance. Beyond routine upkeep, recurring service topics include aging original fuel tanks often identified as replacement candidates, mufflers or exhaust fittings that can develop leaks, and variable engine room accessibility with some service points being tight; substantial engine work has in some cases required lifting engines through the flybridge. None of these issues diminishes the Classic’s appeal for measured coastal miles, but buyers do best when they plan for ongoing maintenance.

Pros and Cons

- Uncrowded interior and secure walk around decks make it well suited to family and coastal cruising.
- Comfortable, economical 7–9 knot cruise range with generally seakindly behavior.
- Generous salon/galley and the warmth of full teak finishes support extended coastal living.
- Will roll somewhat in a beam sea; many owners install stabilizers to reduce motion.
- Teak surfaces require ongoing sanding, varnishing, and cleaning to maintain appearance.
- Aging systems to monitor include original fuel tanks, mufflers/exhaust, and instances of tight engine room access.

Comparison with Other Models

Model	LOA	Beam	Draft	Speed (Cruising/Max)	Gross Tonnage
-------	-----	------	-------	----------------------	---------------

Classic	42' 0" (12.98 m)	13' 0" (4.14 m)	13' 8" (4.17 m) – 14' 6" (4.42 m)	8 kn / 10 kn	34
42 Classic	41' 0" (12.75 m)	13' 0" (4.14 m)	4' 2" (1.27 m)	10 kn / 12 kn	
36 Heritage Classic	40' 0" (12.32 m)	12' 0" (3.86 m)		11 kn / 14 kn	
42 Europa	42' 0" (12.80 m)	14' 0" (4.29 m)			
72 Aleutian RP	72' 0" (21.95 m)	19' 0" (6.04 m)	18' 1" (5.50 m)	18 kn / 24 kn	
Grand Banks 43	43' 0" (13.19 m)	15' 0" (4.77 m)	3' 11" (1.20 m)	8 kn / 24 kn	16.7
36 Classic	36' 0" (11.23 m)	12' 0" (3.86 m)	13' 1" (4 m)		
Eastbay 38	38' 0" (11.58 m)	13' 0" (4.01 m)	10' 11" (3.33 m)	22 kn / 29 kn	
Eastbay 54 SX	54' 0" (16.46 m)	16' 0" (4.88 m)	11' 6" (3.50 m) – 14' 9" (4.50 m)	20 kn / 24 kn	66
49 Classic	50' 0" (15.39 m)	15' 0" (4.70 m)	5' 1" (1.55 m)		

SPECIFICATIONS

LOA:

42' 0" (12.98 m)

Beam:

13' 0" (4.14 m)

Cruise Speed:

8 kn / 9.21 mph

Gross Tonnage:

34 Pounds

Fuel Capacity:

600 Gallons

Sleeps:

4

Hull Material:

Fiberglass and Plastic Yachts

Hull Configuration:

Semi-Displacement

Interior Designer:

Grand Banks

Engines:

2

Engine Type:

Inboard

Min Draft:

13' 8" (4.17 m)

Max Draft:

14' 6" (4.42 m)

Max Speed:

10 kn / 11.51 mph

Water Capacity:

265 Gallons

Total Heads:

2

Deck Material:

Fiberglass

Hull Designer:

Ken Smith

Manufacturer:

Caterpillar

Fuel Type:

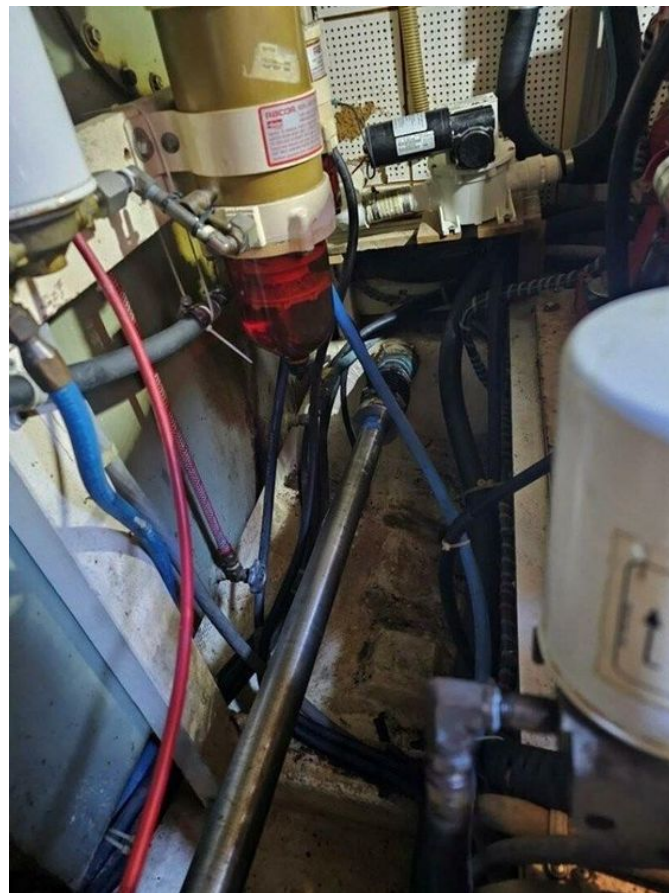
Diesel

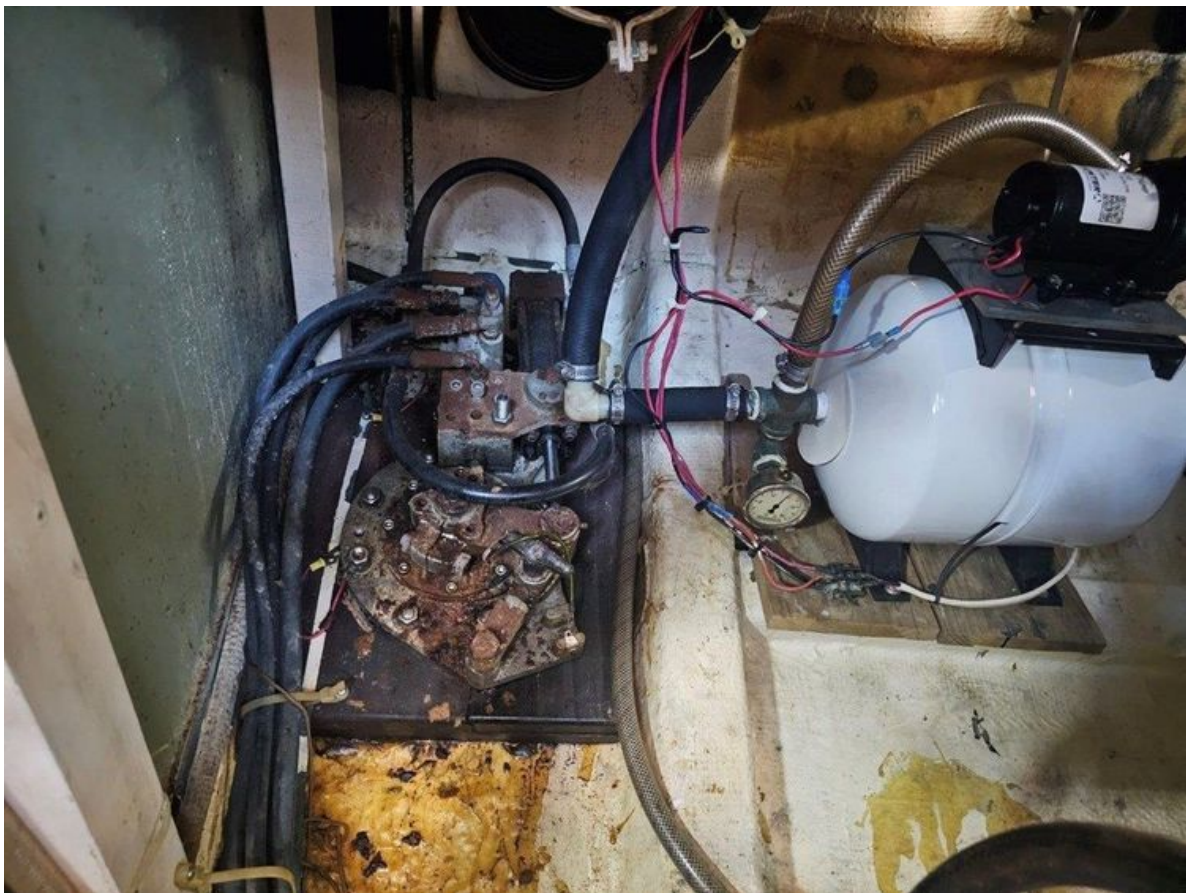
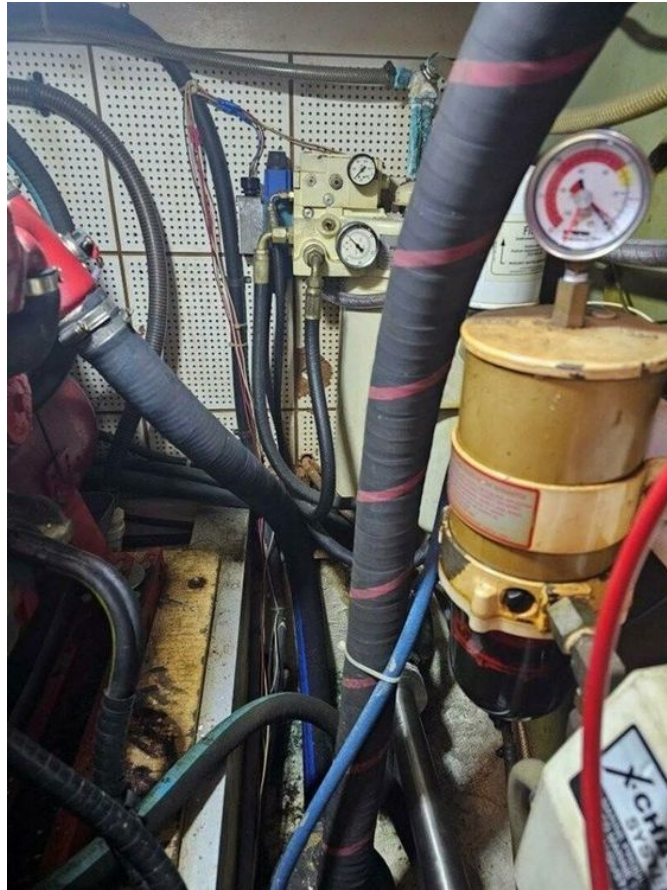
GALLERY











CONTACTS

Shestakov Yacht Sales is a brokerage company specializing in the sale and service of yachts worldwide. The company offers services for buying and selling both new and used motor yachts, sailing vessels, and luxury superyachts. They also provide yacht registration, insurance, technical maintenance, crew selection, and charter organization services across the U.S., Canada, Latin America, the Caribbean, and the Bahamas.

The founder and lead broker of the company is Andrey Shestakov, a licensed and certified expert with extensive experience in marine engineering and shipbuilding.

The company has an extensive network of partnerships with major yacht manufacturers worldwide and provides services in multiple languages, including Russian, Ukrainian, Spanish, and English. The office is in Dania Beach, Florida, USA.

For more information and to view available yachts, you can visit the company's official website: <https://shestakovyachtsales.com>

Contact details

Phone: +1(954)274-4435

Email: andrey@shestakovyachtsales.com

Address



1380 Weeping Willow Way, Hollywood,
Florida 33019