



SHESTAKOV

Yacht Sales

GOURMET CRUISER 32 – HALVORSEN



Builder:

HALVORSEN

Model:

Gourmet Cruiser 32

LOA:

32' 0" (9.75 m)

Beam:

12' 0" (3.66 m)

Max Draft:

12' 0" (3.67 m)

Water Capacity:

120 Gallons

Fuel Capacity:

112 Gallons

Hull Material:

Fiberglass and Plastic Yachts

Deck Material:

Fiberglass

Engines:

2

Manufacturer:

Cummins

Engine Type:

Inboard

If you would like to buy a yacht **GOURMET CRUISER 32 – HALVORSEN** or would like help, please call +1(954)274-4435 or visit shestakovyachtsales.com

TABLE OF CONTENTS

| | |
|---|-----------|
| OVERVIEW | 3 |
| Selecting a Gourmet Cruiser 32 | 3 |
| Features of the Model | 3 |
| Technical Specifications | 4 |
| Pricing and Ordering | 4 |
| Questions and Answers | 5 |
| Owner Experience Review | 5 |
| Pros and Cons | 6 |
| Comparison with Other Models | 7 |
| SPECIFICATIONS | 8 |
| GALLERY | 9 |
| CONTACTS | 14 |

OVERVIEW

The Gourmet Cruiser 32 from HALVORSEN is an elegant motor yacht in the cruiser class, built on a resilient fiberglass and plastic hull. Listed and marketed by Shestakov Yacht Sales with broker Andrey Shestakov, it delivers a compact overall length yet dependable twin-diesel performance suitable for confident coastal cruising.

Selecting a Gourmet Cruiser 32

Opting for the Gourmet Cruiser 32 is a smart choice when you want a yacht with a compact footprint that still feels generously proportioned: at 32 ft LOA and a 12 ft beam the boat presents ample interior volume for its size. Twin Cummins inboard diesels plus practical tankage — 112 gal fuel and 120 gal fresh water — make it well suited to spirited day trips and longer weekend passages.

Designed specifically as a motor yacht in the cruiser class, it appeals to owners who value simple operation, the dependability of diesel propulsion, and the lower upkeep demands of a fiberglass and plastic hull. Work with Andrey Shestakov and Shestakov Yacht Sales to refine your search, coordinate surveys, and guide you smoothly through the purchase process.

Features of the Model

- A considered interior layout tailored to a compact motor yacht within the cruiser class.
- Twin Cummins inboard diesels for redundancy and straightforward handling under power.
- A tough fiberglass and plastic hull paired with a fiberglass deck for longevity

and easier maintenance.

- Well-proportioned dimensions: 32 ft LOA, 12 ft beam, and a maximum draft listed at 12.03 ft.
- Useful service capacities — 112 gal of fuel and 120 gal of fresh water — to support flexible cruising itineraries.

Technical Specifications

- Model: Gourmet Cruiser 32
- Builder: HALVORSEN
- Classification: motor yacht in the cruiser class
- Hull: fiberglass and plastic
- Deck material: Fiberglass
- LOA: 32 ft (9.75 m)
- Beam: 12 ft (3.66 m)
- Draft (max): 12.03 ft (3.6666 m)
- Engines: 2 x Cummins
- Engine type: Inboard
- Fuel: Diesel
- Fuel capacity: 112 gal
- Fresh water capacity: 120 gal

Pricing and Ordering

For up-to-date pricing, availability, and to book a private showing of the Gourmet Cruiser 32 by HALVORSEN, please reach out to Andrey Shestakov at Shestakov Yacht Sales. Our brokerage team will assist with specification reviews, coordinate surveys, and manage the transaction details to ensure a smooth handover from inquiry through delivery.

Questions and Answers

- Q: What type of yacht is the Gourmet Cruiser 32? A: It is a **motor yacht** categorized in the **cruiser class** and constructed with a **fiberglass and plastic hull** .
- Q: Who is the builder? A: The vessel is manufactured by **HALVORSEN** .
- Q: What powers this model? A: Propulsion is provided by two **Cummins inboard diesel** engines, giving the security of twin-engine operation.
- Q: What are the key dimensions? A: The principal measurements are **LOA 32 ft (9.75 m)** , **beam 12 ft (3.66 m)** , and a **maximum draft of 12.03 ft (3.6666 m)** .
- Q: How do I get pricing or place an order? A: Contact **Andrey Shestakov** at **Shestakov Yacht Sales** for quotations, current inventory details, and to arrange inspections of the Gourmet Cruiser 32.

Owner Experience Review

Owners commonly choose the Gourmet Cruiser 32 from HALVORSEN for relaxed coastal family cruises and easygoing “social cruising.” Many describe the boat as feeling like a comfortable 32 foot apartment afloat, thanks to a nearly full beam saloon and a roomy owner's cabin with an ensuite, complemented by warm teak joinery and generous natural light. The interior helm proves genuinely practical (a flybridge option was offered on some examples), and the aft cockpit comfortably accommodates four to six people beneath camper or insect covers. Tall, continuous rails and accessible side decks instill confidence when moving about, which is especially helpful for short handed operations or when entertaining guests. For retirees or owner operators, the layout and systems are arranged to support leisurely day trips and measured passages, with a quoted practical cruising range exceeding 200 nautical miles.

Underway the Gourmet Cruiser 32 behaves much like a steady semi displacement/trawler: in trials roughly 10 knots at about 2200 rpm burned approximately 31 L/h, and the hull tracks positively thanks to a full length deadwood keel, delivering a composed and quiet ride at displacement speeds. The helm is responsive and easy to handle in tight situations; however, single engine versions can feel lacking when higher speed is desired — expect top sprints in the mid teens (around 15–16 knots) at a significant fuel cost, and note the transom may tend to squat when running hard. Practical considerations are favorable: the engines are located aft beneath the cockpit rather than under the saloon, which reduces cabin noise and simplifies access compared with many traditional trawlers. Maintenance is the trade off — colored gelcoats, polished stainlesswork, and lacquered teak require ongoing care — and experienced owners often recommend duplicating filters and raw water strainers for added reliability; several boats in the fleet have undergone refits or repower projects over time.

Pros and Cons

- Generous saloon and cockpit layouts make it excellent for social boating and family weekends with 4–6 people.
- A stable, quiet semi displacement ride combined with a full length keel gives confidence on coastal passages.
- Engine placement aft improves service access and reduces cabin noise, and the interior helm is genuinely usable.
- Colored hulls, brightwork, and varnished teak require regular cosmetic upkeep.
- Single engine configurations can feel underpowered for higher speed runs, with realistic top speeds in the 15–16 knot range.
- Fuel consumption rises sharply when pushed, and the transom can settle like a displacement hull under load.

Comparison with Other Models

| Model | LOA | Beam | Draft | Speed (Cruising/Max) | Gross Tonnage |
|--------------------|-----------------|-----------------|-----------------|----------------------|---------------|
| Gourmet Cruiser 32 | 32' 0" (9.75 m) | 12' 0" (3.66 m) | 12' 0" (3.67 m) | | |

SPECIFICATIONS

LOA:

32' 0" (9.75 m)

Max Draft:

12' 0" (3.67 m)

Water Capacity:

120 Gallons

Hull Material:

Fiberglass and Plastic Yachts

Engines:

2

Engine Type:

Inboard

Beam:

12' 0" (3.66 m)

Fuel Capacity:

112 Gallons

Deck Material:

Fiberglass

Manufacturer:

Cummins

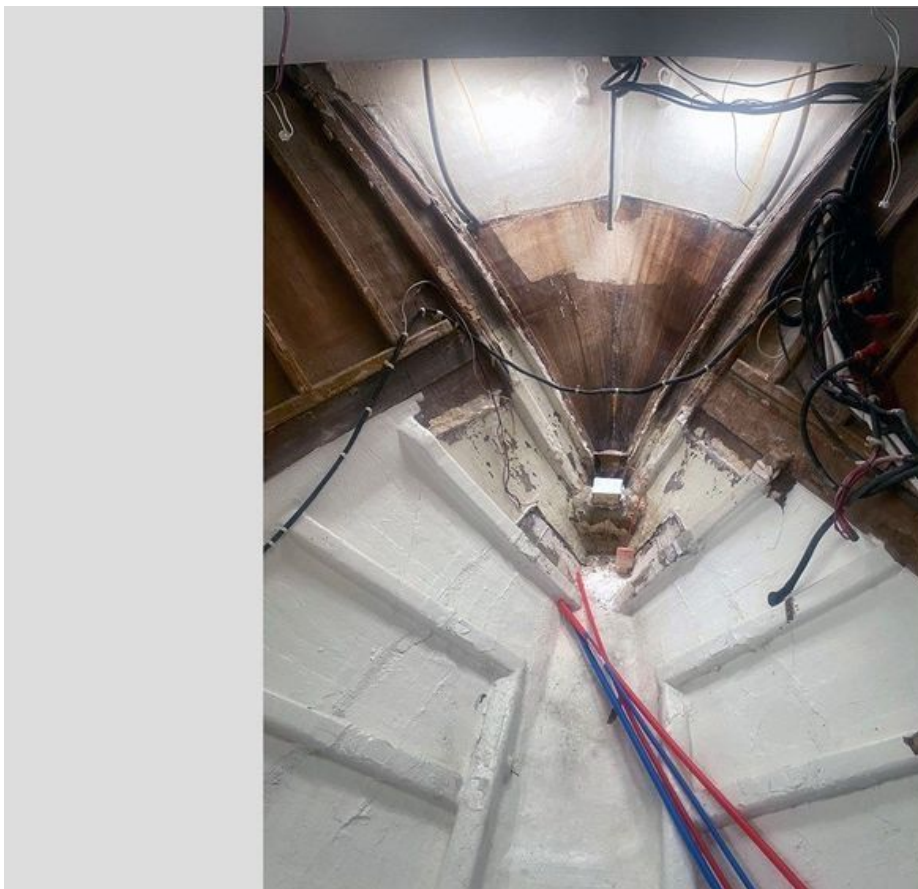
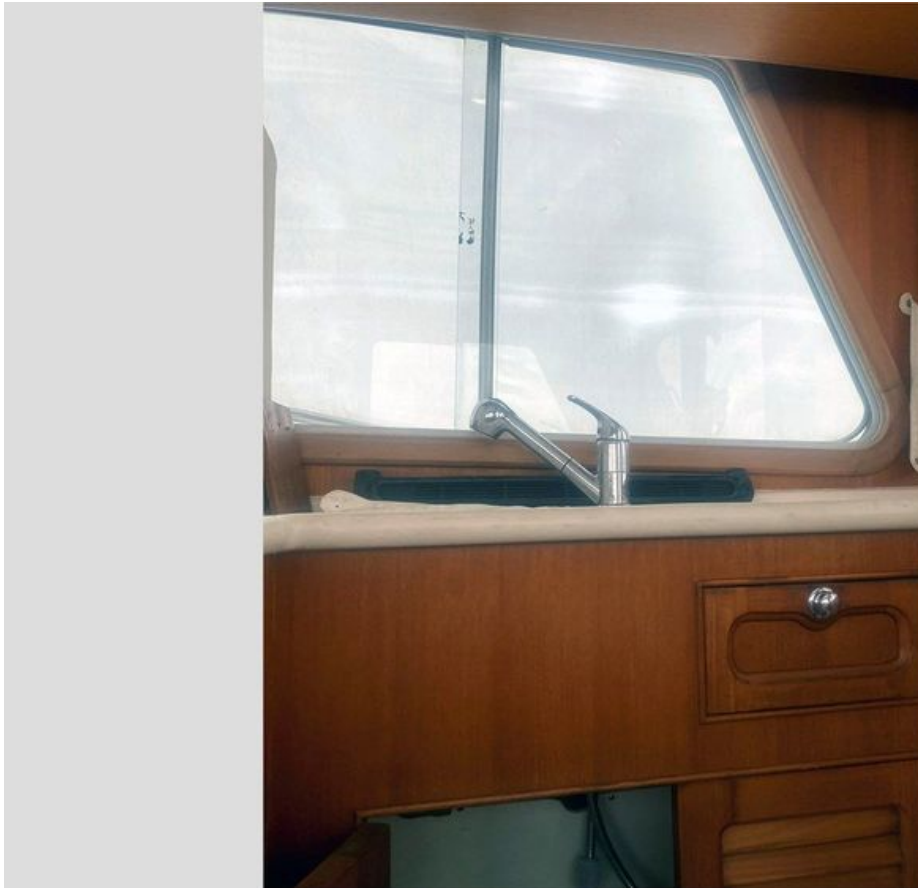
Fuel Type:

Diesel

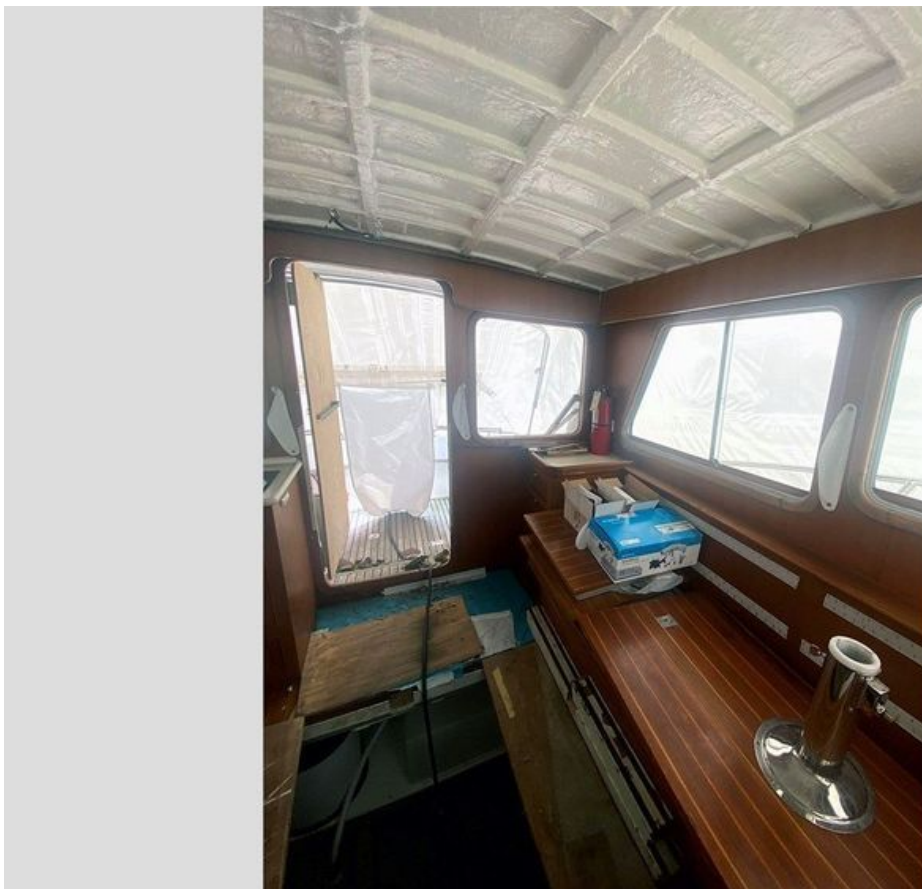
GALLERY











CONTACTS

Shestakov Yacht Sales is a brokerage company specializing in the sale and service of yachts worldwide. The company offers services for buying and selling both new and used motor yachts, sailing vessels, and luxury superyachts. They also provide yacht registration, insurance, technical maintenance, crew selection, and charter organization services across the U.S., Canada, Latin America, the Caribbean, and the Bahamas.

The founder and lead broker of the company is Andrey Shestakov, a licensed and certified expert with extensive experience in marine engineering and shipbuilding.

The company has an extensive network of partnerships with major yacht manufacturers worldwide and provides services in multiple languages, including Russian, Ukrainian, Spanish, and English. The office is in Dania Beach, Florida, USA.

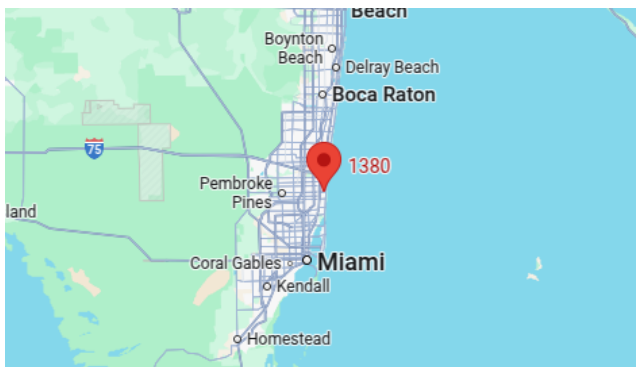
For more information and to view available yachts, you can visit the company's official website: <https://shestakovyachtsales.com>

Contact details

Phone: +1(954)274-4435

Email: andrey@shestakovyachtsales.com

Address



1380 Weeping Willow Way, Hollywood,
Florida 33019