



SHESTAKOV

Yacht Sales

## HANSE 540E – HANSE YACHTS



**Builder:**

Hanse Yachts

**Model:**

Hanse 540e

**LOA:**

52' 0" (16.08 m)

**Min Draft:**

30' 1" (9.17 m)

**Beam:**

16' 0" (4.90 m)

**Water Capacity:**

182.28 Gallons

**Fuel Capacity:**

99.06 Gallons

**Sleeps:**

6

**Total Heads:**

3

**Hull Material:**

Fiberglass and Plastic Yachts

**Deck Material:**

GRP

**Hull Designer:**

Jude/Vrolijk

If you would like to buy a yacht **HANSE 540E – Hanse Yachts** or would like help, please call +1(954)274-4435 or visit [shestakovyachtsales.com](http://shestakovyachtsales.com)

---

# TABLE OF CONTENTS

---

<b>OVERVIEW .....</b>	<b>3</b>
<b>Selecting a Hanse 540e .....</b>	<b>3</b>
<b>Features of the Model .....</b>	<b>3</b>
<b>Technical Specifications .....</b>	<b>4</b>
<b>Pricing and Ordering .....</b>	<b>4</b>
<b>Questions and Answers .....</b>	<b>5</b>
<b>Owner Experience Review .....</b>	<b>5</b>
<b>Pros and Cons .....</b>	<b>6</b>
<b>Comparison with Other Models .....</b>	<b>7</b>
<b>SPECIFICATIONS .....</b>	<b>8</b>
<b>GALLERY .....</b>	<b>9</b>
<b>CONTACTS .....</b>	<b>14</b>

## OVERVIEW

---

The Hanse 540e from Hanse Yachts represents a polished entry in the sail yacht cruising segment. It rides on a durable fiberglass and plastic hull with a GRP deck and naval architecture by JudelVrolijk. This model is listed by Shestakov Yacht Sales with broker Andrey Shestakov.

## Selecting a Hanse 540e

---

Opting for the Hanse 540e signals a preference for a capable cruiser that blends volume and manageability. Measuring 52 ft (16.08 m) LOA with a 16 ft (4.9 m) beam, the design delivers ample living space suitable for up to six overnight guests and three heads. A single inboard Yanmar diesel simplifies operation and upkeep, while substantial tankage—182.28 gal of water and 99.06 gal of fuel—allows for prolonged time away from port. The JudelVrolijk-designed hull paired with fiberglass and plastic construction and a GRP deck creates a reliable cruising platform.

## Features of the Model

---

- Category: sail yacht within the cruising sailboats class
- Hull material: fiberglass and plastic; deck material: GRP
- Hull designer: JudelVrolijk
- LOA: 52 ft (16.08 m); Beam: 16 ft (4.9 m); Draft (min): 30.074 ft (9.1666 m)
- Accommodations: 6 berths; Heads: 3
- Propulsion: 1 x Yanmar, inboard, diesel

## Technical Specifications

---

- Model: Hanse 540e
- Builder: Hanse Yachts
- Classification: sail yacht; cruising sailboat
- Hull material: fiberglass and plastic
- Deck material: GRP
- Hull designer: JudelVrolijk
- LOA: 52 ft (16.08 m)
- Beam: 16 ft (4.9 m)
- Draft (min): 30.074 ft (9.1666 m)
- Engines: 1
- Engine manufacturer: Yanmar
- Engine type: Inboard
- Fuel type: Diesel
- Water capacity: 182.28 gal
- Fuel capacity: 99.06 gal
- Accommodation capacity: 6
- Sleeps: 6
- Heads: 3

## Pricing and Ordering

---

To obtain current pricing, availability, or to schedule a private viewing of the Hanse 540e, please reach out to Andrey Shestakov at Shestakov Yacht Sales. Our brokerage team will walk you through specifications, available options, and the purchase process tailored to your requirements.

---

## Questions and Answers

---

Q: What type of yacht is the Hanse 540e? A: It is a sail yacht marketed within the cruising sailboats category, engineered for **cruising** and built with a **GRP** deck over a fiberglass and plastic hull.

Q: Who builds and who designed the hull of the Hanse 540e? A: The yacht is constructed by Hanse Yachts, and the **hull designer** is **JudelVrolijk** , credited for the naval architecture.

Q: How many people can the Hanse 540e sleep, and how many heads are onboard? A: The interior plan accommodates **sleeps 6** and includes **3 heads** , making it well suited for family or crewed **cruising** .

Q: What is the engine setup on the Hanse 540e? A: The vessel is powered by **1 x Yanmar inboard diesel** engine, a straightforward configuration that favors reliability and efficient passage-making.

Q: What are the key dimensions and tankage of the Hanse 540e? A: LOA is **52 ft (16.08 m)** , beam **16 ft (4.9 m)** , draft (min) **30.074 ft (9.1666 m)** , with **water 182.28 gal** and **fuel 99.06 gal** to support extended cruising.

---

## Owner Experience Review

---

Owners commonly report the Hanse 540e as a large, comfortable cruiser that remains manageable for two people; the self tacking jib and lines led aft make short handed sailing practical. Feedback highlights that she tracks straight, turns with more agility than her length might imply, and handles choppy conditions confidently; recorded sea trials noted roughly 7.5 knots at 2,600 rpm and around 9 knots at 3,800 rpm under power. The balanced spade rudder delivers a positive feel at the helm, though inattentive steering can allow it to get ahead of you—nonetheless many owners summarize the sailing

experience as “It sails like a dream!”

The standard three cabin arrangement places a generous owner’s stateroom forward with two double cabins aft and a large saloon in between, while the substantial cockpit suits family cruising and dockside entertaining. Practical touches include a foldaway cockpit table and a transom garage sized for a small RIB, and the Euro style interior—with Corian worktops and mahogany trim—reads clean and modern, though some owners find the finish a bit austere and would welcome additional handholds. Several reviewers mention the companionway geometry can feel awkward, and the positioning of cockpit coamings and line clutches may complicate boarding and movement onboard.

On the ownership side, early commissioning reports cited problems such as generators cutting out, main engine stoppages, A/C malfunctions, inaccurate tank level readings, and pump failures, with multiple owners stressing that the quality of dealer and service support has a major impact—one owner even described after sales service as “dismayal.” The construction uses the epoxy/prepreg “e” hull over Corecell foam with a conventional shaft drive, a combination often praised for reducing osmosis risk and potentially lowering long term drivetrain maintenance compared with a saildrive. Typical usage ranges from couple led coastal passagemaking and family cruising to marina entertaining, with some 2007–2009-era examples having seen charter service in Europe.

## Pros and Cons

---

- Shorthanded sailing is genuinely simplified by the self tacking jib and lines led aft to the cockpit.
- Strong seakeeping and unexpectedly agile turning for a yacht of this size; she slices through chop and tracks reliably.
- Generous three cabin layout, large cockpit with a foldaway table, and a

transom garage are ideal for family cruising and entertaining.

- Initial commissioning and quality control issues were reported, and owners note that dealer/service standards are inconsistent.
- Companionway geometry and certain cockpit details can make boarding and moving about the deck awkward.
- The interior's modern aesthetic divides opinion; there are relatively few handholds below and some owners report various QA niggles.

## Comparison with Other Models

Model	LOA	Beam	Draft	Speed (Cruising/Max)	Gross Tonnage
Hanse 540e	52' 0" (16.08 m)	16' 0" (4.90 m)	30' 1" (9.17 m)		
505	50' 0" (15.29 m)	15' 0" (4.75 m)	21' 4" (6.50 m)	8 kn	22
588	56' 0" (17.20 m)	17' 0" (5.20 m)	8' 6" (2.60 m)	7.5 kn / 10 kn	
RYCK 280	31' 0" (9.50 m)	9' 0" (2.82 m)	6' 3" (1.92 m) – 7' 1" (2.17 m)		
458	46' 0" (14.04 m)	14' 0" (4.38 m)	7' 4" (2.23 m)		
510	52' 0" (15.98 m)	14' 0" (4.42 m)	21' 4" (6.50 m)		
545	53' 0" (16.23 m)	16' 0" (4.88 m)	26' 3" (8 m)	9 kn / 10 kn	
460	48' 0" (14.60 m)	15' 0" (4.80 m)	18' 10" (5.75 m) – 24' 4" (7.42 m)		

# SPECIFICATIONS

---

**LOA:**

52' 0" (16.08 m)

**Beam:**

16' 0" (4.90 m)

**Water Capacity:**

182.28 Gallons

**Sleeps:**

6

**Hull Material:**

Fiberglass and Plastic Yachts

**Hull Designer:**

JudelVrolijk

**Engines:**

1

**Engine Type:**

Inboard

**Min Draft:**

30' 1" (9.17 m)

**Fuel Capacity:**

99.06 Gallons

**Total Heads:**

3

**Deck Material:**

GRP

**Manufacturer:**

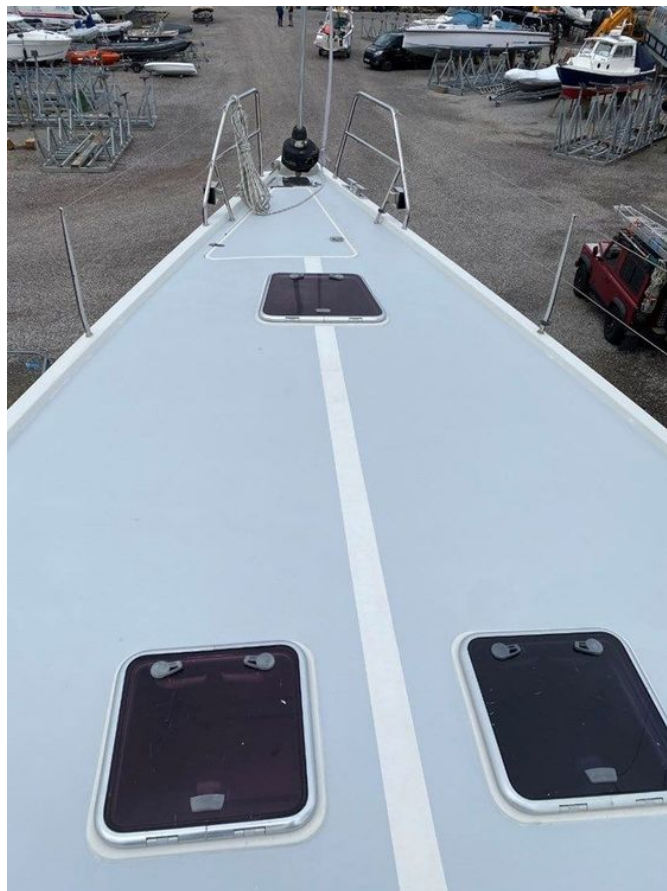
Yanmar

**Fuel Type:**

Diesel

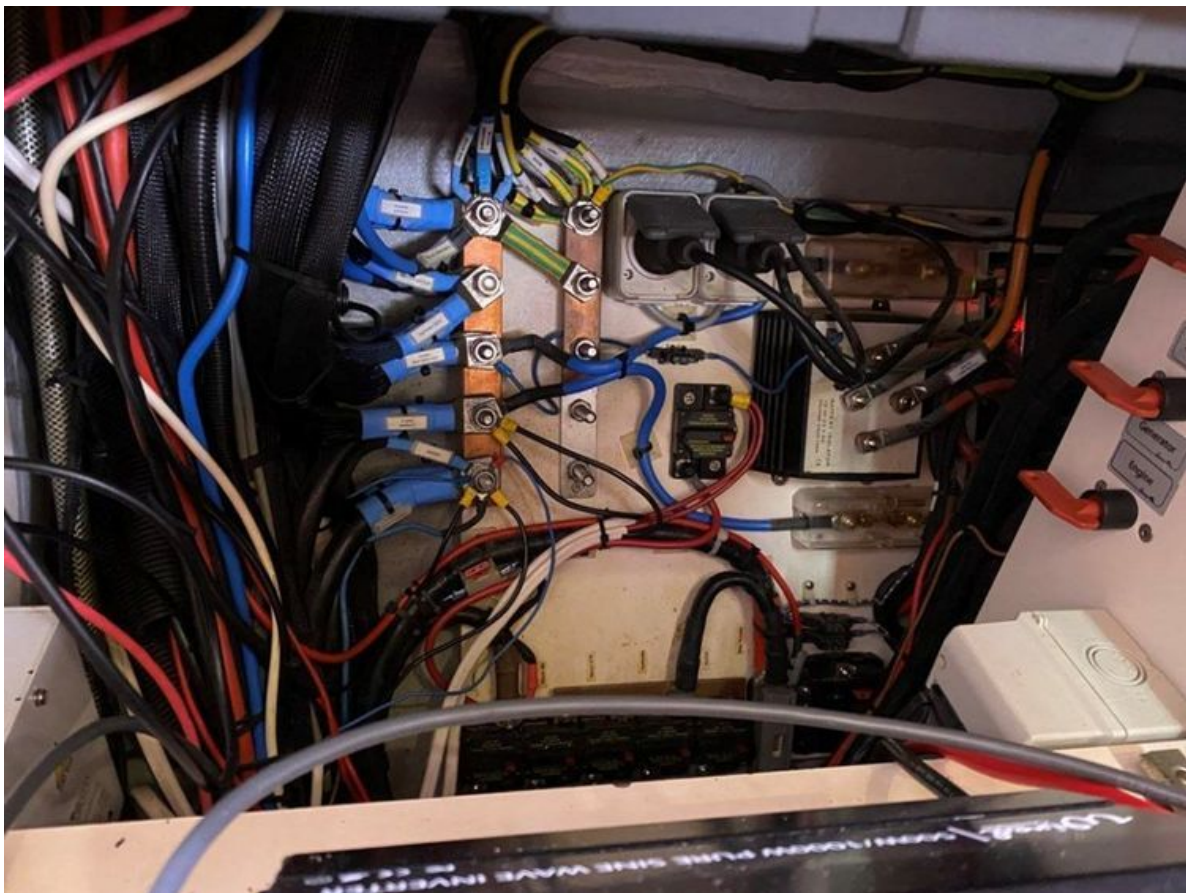
# GALLERY











# CONTACTS

---

Shestakov Yacht Sales is a brokerage company specializing in the sale and service of yachts worldwide. The company offers services for buying and selling both new and used motor yachts, sailing vessels, and luxury superyachts. They also provide yacht registration, insurance, technical maintenance, crew selection, and charter organization services across the U.S., Canada, Latin America, the Caribbean, and the Bahamas.

The founder and lead broker of the company is Andrey Shestakov, a licensed and certified expert with extensive experience in marine engineering and shipbuilding.

The company has an extensive network of partnerships with major yacht manufacturers worldwide and provides services in multiple languages, including Russian, Ukrainian, Spanish, and English. The office is in Dania Beach, Florida, USA.

For more information and to view available yachts, you can visit the company's official website: <https://shestakovyachtsales.com>

## Contact details

---

**Phone:** +1(954)274-4435

**Email:** [andrey@shestakovyachtsales.com](mailto:andrey@shestakovyachtsales.com)

## Address

---



1380 Weeping Willow Way, Hollywood,  
Florida 33019