



SHESTAKOV

Yacht Sales

GT63 – HATTERAS



Builder:

Hatteras

Model:

GT63

LOA:

63' 0" (19.46 m)

Beam:

20' 0" (6.10 m)

Max Draft:

16' 5" (5 m)

Water Capacity:

270 Gallons

Fuel Capacity:

1900 Gallons

Total Heads:

3

Hull Material:

Fiberglass and Plastic Yachts

Deck Material:

Fiberglass

Engines:

2

Manufacturer:

CAT

If you would like to buy a yacht **GT63 – Hatteras** or would like help, please call +1(954)274-4435 or visit shestakovyachtsales.com

TABLE OF CONTENTS

OVERVIEW	3
Selecting a GT63	3
Features of the Model	3
Technical Specifications	3
Pricing and Ordering	4
Questions and Answers	4
Owner Experience Review	5
Pros and Cons	6
Comparison with Other Models	6
SPECIFICATIONS	8
GALLERY	9
CONTACTS	14

OVERVIEW

The GT63 from Hatteras is a motor yacht built in the sportfisherman category, featuring a fiberglass and plastic hull. Measuring 63 ft (19.46 m) overall with a 20 ft (6.1 m) beam and equipped with 3 heads, the model is driven by twin CAT inboard diesel engines. Shestakov Yacht Sales, under broker Andrey Shestakov, stands ready to assist with selection and acquisition.

Selecting a GT63

When you select a GT63 through Shestakov Yacht Sales, the process emphasizes clear specifications and client priorities. Andrey Shestakov and the team will assess your needs for a motor yacht in the sportfisherman class, verify hull construction as fiberglass and plastic, and align you with appropriate GT63 options from Hatteras.

Features of the Model

- A functional layout that includes three heads to support extended stays aboard
- Twin CAT inboard diesel engines supplying dependable propulsion
- A sturdy fiberglass and plastic hull paired with fiberglass deck construction
- Impressive tankage with 1,900 gal of fuel and 270 gal of fresh water capacity
- Generous proportions — 63 ft LOA and a 20 ft beam — offering roominess and seakeeping

Technical Specifications

- Builder: Hatteras

- Model: GT63
- Type: motor yacht
- Sub-category: sportfisherman
- Hull category: fiberglass and plastic
- LOA: 63 ft (19.46 m)
- Beam: 20 ft (6.1 m)
- Max draft: 16.404 ft (5 m)
- Engines: 2 x CAT
- Engine type: Inboard
- Fuel type: Diesel
- Fuel capacity: 1,900 gal
- Water capacity: 270 gal
- Heads: 3
- Hull material: fiberglass and plastic
- Deck material: Fiberglass

Pricing and Ordering

To obtain up-to-date availability, optional equipment, and delivery schedules for the GT63 by Hatteras, reach out to Shestakov Yacht Sales. Broker Andrey Shestakov will walk you through the specification choices, advise on offer strategy, and coordinate the purchase, closing, and logistics.

Questions and Answers

Q: What type of yacht is the GT63? A: It is a motor yacht configured within the sportfisherman segment and constructed with a fiberglass and plastic hull.

Q: What are the key dimensions of the model? A: The GT63 lists at **LOA** 63 ft (19.46 m), **Beam** 20 ft (6.1 m), and **Draft** 16.404 ft (5 m).

Q: What engines power the yacht? A: Propulsion comes from **2 x CAT inboard diesel** engines, per the model specifications.

Q: What are the fuel and water capacities? A: The yacht carries **Fuel capacity** of 1,900 gal and **Water capacity** of 270 gal.

Q: How do I order through Shestakov Yacht Sales? A: **Contact** Shestakov Yacht Sales to consult with **Andrey Shestakov** about configurations, confirm specifications, and manage the purchase of a GT63 by Hatteras.

Owner Experience Review

Owners and captains deploy the GT63 from Hatteras for dedicated sportfishing, high speed canyon runs, and relaxed family weekends alike. Anglers frequently praise the expansive 170+ ft² cockpit equipped with a rocket launcher and a transom baitwell. Reports of top speeds in excess of 40 knots and efficient cruising in the low 30s underscore its ability to cover long distances quickly; one recorded Atlantic crossing further demonstrates its bluewater potential.

On the water, the GT63's behavior earns consistent commendation. Sea trials in 3–5 ft conditions, escalating to 8–10 ft in the Gulf Stream, emphasize the classic Hatteras motion and overall seaworthiness. Owners often note “confident handling,” steady tracking, and predictable manners in following and moderate seas. Bridge layouts provide 360° visibility and ample electronics space, and the helm is frequently arranged for either owner driven operation or professional captain use.

Below decks, the common four stateroom/three head arrangement with a luminous salon and an open galley accommodates extended voyages and multiple guests, though some buyers have taken issue with interior finish selections, describing the horizontal grain cabinetry as “strange looking” and

“cheap looking.” The engineroom is laid out for access and servicing, while the twin Caterpillar C32 ACERTs are noted for the elevated routine maintenance and overhaul costs typical of large diesel powerplants. Securing insurance can be challenging without documented experience, but early owner voyages have sometimes been supported by Hatteras service, including a technician accompanying new owners.

Pros and Cons

- Confident offshore ride and handling, with favorable reports in 3–5 ft seas progressing to 8–10 ft in the Gulf Stream.
- Top speeds exceeding 40 knots and efficient cruising in the low 30s for rapid canyon runs and passages.
- A roomy 170+ ft² cockpit with rocket launcher and transom baitwell tailored to serious anglers.
- Some owners critique the interior finishes, calling the horizontal grain cabinetry “strange looking, horizontal grain, cheap looking cabinetry.”
- Twin Caterpillar C32 ACERT engines carry higher routine service and overhaul expenses common to large diesels.
- Insurance can be difficult to obtain without significant, verifiable experience.

Comparison with Other Models

Model	LOA	Beam	Draft	Speed (Cruising/Max)	Gross Tonnage
GT63	63' 0" (19.46 m)	20' 0" (6.10 m)	16' 5" (5 m)		
Flybridge Motor Yacht	130' 0" (39.62 m)	25' 0" (7.62 m)	20' 6" (6.25 m) – 21' 4" (6.50 m)	14 kn / 22 kn	272
45 Express Sportfish	45' 0" (13.72 m)	16' 0" (5.03 m)	13' 1" (4 m)	30 kn / 40 kn	

60 Motor Yacht	60' 0" (18.52 m)	18' 0" (5.54 m)	16' 5" (5 m)		
LAMPHRE YACHTS CUSTOM	75' 0" (22.86 m)	19' 0" (5.82 m)	26' 3" (8 m)		
60 Convertible	60' 0" (18.31 m)	17' 0" (5.28 m)	16' 2" (4.92 m)	30 kn / 36 kn	
53	53' 0" (16.15 m)	15' 0" (4.83 m)	14' 9" (4.50 m)		
Long Range Cruiser	48' 0" (14.63 m)	16' 0" (5.03 m)	15' 4" (4.67 m)	7.5 kn / 9.5 kn	
65 Convertible	65' 0" (19.81 m)	18' 0" (5.49 m)	17' 9" (5.42 m)	32 kn	
M90 PANACERA	97' 0" (29.57 m)	22' 0" (6.86 m)	19' 8" (6 m) – 20' 4" (6.20 m)	16 kn / 22 kn	174

SPECIFICATIONS

LOA:

63' 0" (19.46 m)

Max Draft:

16' 5" (5 m)

Water Capacity:

270 Gallons

Total Heads:

3

Hull Material:

Fiberglass and Plastic Yachts

Engines:

2

Engine Type:

Inboard

Beam:

20' 0" (6.10 m)

Fuel Capacity:

1900 Gallons

Deck Material:

Fiberglass

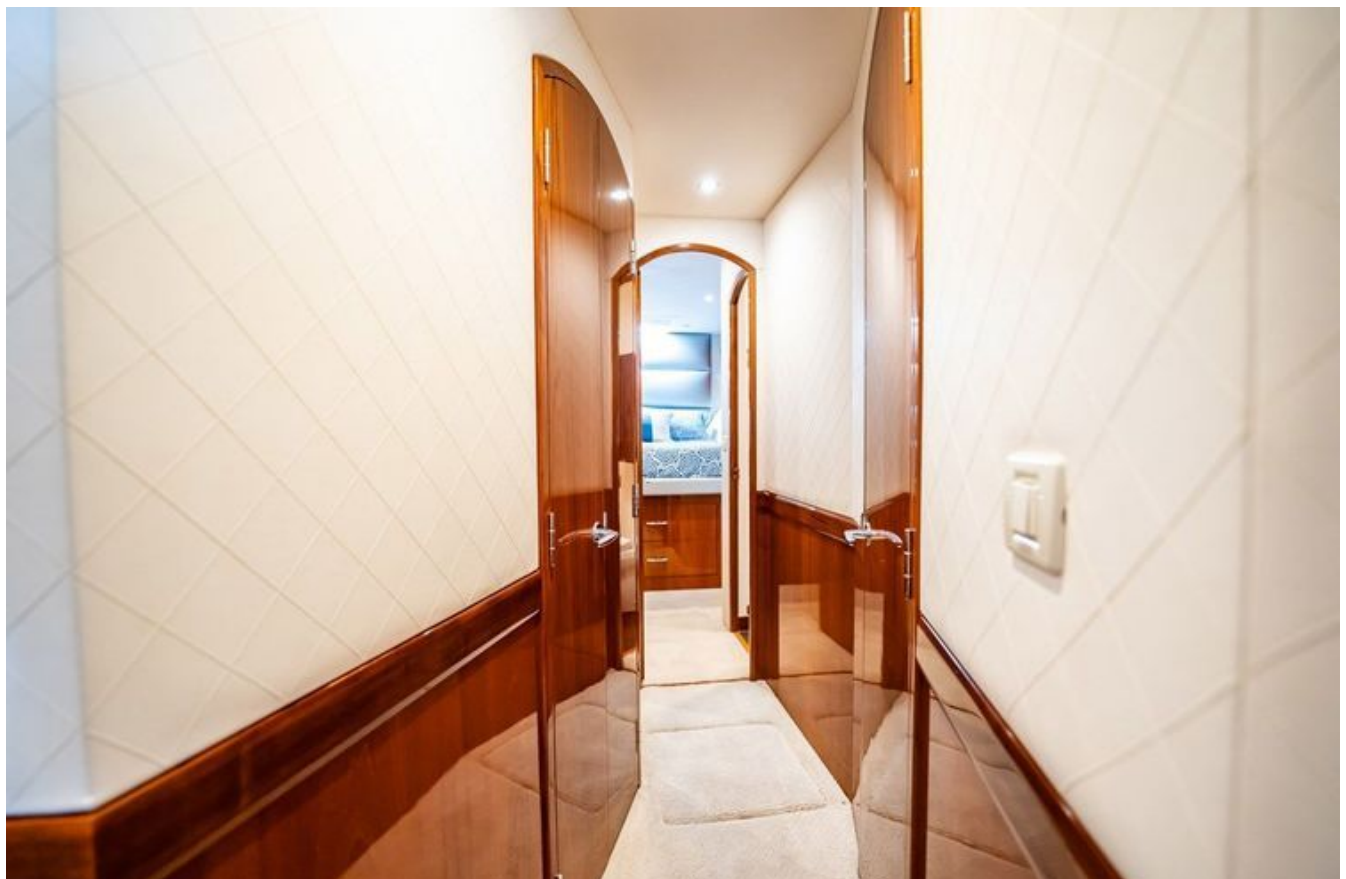
Manufacturer:

CAT

Fuel Type:

Diesel

GALLERY











CONTACTS

Shestakov Yacht Sales is a brokerage company specializing in the sale and service of yachts worldwide. The company offers services for buying and selling both new and used motor yachts, sailing vessels, and luxury superyachts. They also provide yacht registration, insurance, technical maintenance, crew selection, and charter organization services across the U.S., Canada, Latin America, the Caribbean, and the Bahamas.

The founder and lead broker of the company is Andrey Shestakov, a licensed and certified expert with extensive experience in marine engineering and shipbuilding.

The company has an extensive network of partnerships with major yacht manufacturers worldwide and provides services in multiple languages, including Russian, Ukrainian, Spanish, and English. The office is in Dania Beach, Florida, USA.

For more information and to view available yachts, you can visit the company's official website: <https://shestakovyachtsales.com>

Contact details

Phone: +1(954)274-4435

Email: andrey@shestakovyachtsales.com

Address



1380 Weeping Willow Way, Hollywood,
Florida 33019