



SHESTAKOV

Yacht Sales

55M - HEESEN YACHTS



Builder:

Heesen Yachts

Model:

55m

LOA:

180' 0" (55 m)

Beam:

31' 0" (9.60 m)

Max Draft:

10' 5" (3.17 m)

Cruise Speed:

13.5 kn / 15.54 mph

Max Speed:

15.5 kn / 17.84 mph

Gross Tonnage:

760 Pounds

Water Capacity:

6340 Gallons

Fuel Capacity:

26400 Gallons

Sleeps:

8

Total Heads:

8

If you would like to buy a yacht **55M - Heesen Yachts** or would like help, please call +1(954)274-4435 or visit shestakovyachtsales.com

TABLE OF CONTENTS

OVERVIEW 3

- Selecting a 55m 3
- Features of the Model 3
- Technical Specifications 4
- Pricing and Ordering 4
- Questions and Answers 4
- Owner Experience Review 5
- Pros and Cons 6
- Comparison with Other Models 6

SPECIFICATIONS 8

GALLERY 9

CONTACTS 14

OVERVIEW

Presented by Shestakov Yacht Sales and broker Andrey Shestakov, the 55m from Heesen Yachts is a motor yacht built on a steel yacht platform, combining a Van Oossanen hull form with interiors crafted by Luca Dini Design.

Selecting a 55m

Measuring 55 m overall with a 9.6 m beam, the 55m presents well-proportioned lines, a gross volume of 760 GT and economical performance figures—approximately 13.5 knots for cruising and 15.5 knots as a top speed. The monohull arrangement provides predictable handling characteristics, while the steel construction enhances onboard comfort and long-term structural resilience. Shestakov Yacht Sales and Andrey Shestakov are available to assist you through technical specifications, customization conversations and the purchase process for this prominent model from Heesen Yachts.

Features of the Model

- Builder and model: Heesen Yachts — 55m
- Type and construction: motor yacht; steel yacht with steel decks
- Hull configuration: Monohull
- Hull designer: Van Oossanen
- Interior designer: Luca Dini Design
- Propulsion: 2 x MTU, Inboard, Diesel
- Performance: 13.5 kn cruise (15.54 mph); 15.5 kn max (17.84 mph)
- Capacities: Fuel 26,400 gal; Fresh water 6,340 gal
- Accommodations and crew: Accommodation count 12; Sleeps 8; Heads 8; Crew cabins 7; Crew beds 14

Technical Specifications

- LOA: 180 ft (55 m)
- Beam: 31 ft (9.6 m)
- Max draft: 10.4 ft (3.17 m)
- Gross tonnage: 760 GT
- Hull: Monohull; steel yacht
- Deck material: Steel
- Engines: 2 x MTU; Type: Inboard; Fuel: Diesel
- Speed: Cruise 13.5 kn (15.54 mph); Max 15.5 kn (17.84 mph)
- Accommodation count: 12; Sleeps: 8; Heads: 8
- Crew: 7 cabins; 14 beds
- Designers: Hull — Van Oossanen; Interior — Luca Dini Design

Pricing and Ordering

For detailed pricing, current availability and ordering information on the 55m by Heesen Yachts, please contact Andrey Shestakov at Shestakov Yacht Sales. Our specialists will manage the next steps, including full specification reviews and coordination with the shipyard to match the yacht to your requirements.

Questions and Answers

Q: How is the 55m classified? A: The 55m is a motor yacht constructed as a steel yacht by Heesen Yachts, featuring a **Monohull** layout.

Q: What are the primary dimensions and tonnage? A: The yacht's **LOA** measures 180 ft (55 m), **Beam** is 31 ft (9.6 m), **Max Draft** is 10.4 ft (3.17 m), and the vessel is rated at **760 GT**.

Q: What speeds should owners expect? A: Typical performance is a **Cruising**

Speed of 13.5 kn (15.54 mph) and a **Maximum Speed** of 15.5 kn (17.84 mph).

Q: How is accommodation organized for guests and crew? A: The layout provides an **Accommodation count** of 12, with sleeping capacity listed as **Sleeps 8, Heads 8**, and crew quarters comprising 7 cabins with 14 beds.

Q: Who are the designers and what construction materials are used? A: The **Hull Designer** is Van Oossanen and the **Interior Designer** is Luca Dini Design; the yacht is a steel yacht with **Steel** decks.

Owner Experience Review

Owners often choose the 55m from Heesen Yachts for extended family cruising and ocean passages, citing a practical displacement cruise range of roughly 4,000–6,000 nm and flexible six cabin arrangements that suit long itineraries. Beach club layouts and sundeck spa options also make the platform appealing for charter programs; several spec-built hulls have demonstrated the model's adaptability as both a private yacht and a marketable asset. One owner summarized the process by noting: "This latest yacht gave me the opportunity to refine the design and make many small changes," a comment that reflects the frequent personalization owners undertake across the series.

Underway, the Fast Displacement Hull Form is a standout attribute, delivering efficient fuel consumption and steady seakeeping across varied speeds. Depending on engine selection and displacement, owners report comfortable long range cruising at approximately 10–12 knots with top speeds observed in the 15–22 knot range. Some yachts received post delivery engineering modifications—such as elastic gearbox mounts and rubber shaft couplings—to reduce noise and vibration; reviewers recorded measurable improvements, and owners typically regard these updates as examples of the yard's willingness to address refinements rather than fundamental faults.

From an operational standpoint, most installations use MTU 4000 series main engines, units known for robust performance but also for requiring scheduled heavy maintenance and careful spare parts planning. At this size, running expenses and crew-related costs are material; the 55m range nonetheless demonstrates respectable resale within the 50–60 m market segment. Prospective buyers are advised to commission comprehensive technical surveys and to budget for lifecycle and maintenance costs from the outset.

Pros and Cons

- Long range potential (approximately 4,000–6,000 nm at displacement cruise) and six cabin layouts make the yacht well suited to family cruising and transoceanic travel.
- The FDHF provides efficient fuel usage and commendable seakeeping from low to high speeds.
- Strong charter potential thanks to features like a sundeck spa and beach club configurations, with the series showing solid resale dynamics.
- Typical propulsion packages use MTU 4000 series mains, which necessitate planned heavy servicing and proactive parts management.
- A number of hulls have required post delivery noise and vibration remedies (elastic gearbox mounts, rubber shaft couplings), so buyers should allow for commissioning adjustments.
- Annual operating and crew costs are substantial; comprehensive technical inspections and lifecycle cost planning are recommended.

Comparison with Other Models

Model	LOA	Beam	Draft	Speed (Cruising/Max)	Gross Tonnage
-------	-----	------	-------	----------------------	---------------

55m	180' 0" (55 m)	31' 0" (9.60 m)	10' 5" (3.17 m)	13.5 kn / 15.5 kn	760
44M	146' 0" (44.68 m)	29' 0" (9.10 m)	25' 10" (7.87 m) – 27' 11" (8.50 m)	12 kn / 23 kn	458
38 meter	123' 0" (37.69 m)	24' 0" (7.40 m)	6' 11" (2.10 m) – 7' 10" (2.40 m)	10 kn / 13 kn	290
CUSTOM	180' 0" (55 m)	30' 0" (9.40 m)	9' 10" (3 m)	17 kn / 25 kn	781
1996 Heesen	125' 0" (38.38 m)	24' 0" (7.42 m)	22' 8" (6.92 m)	8 kn / 28 kn	232
Trideck	125' 0" (38.10 m)	25' 0" (7.62 m)	26' 10" (8.17 m)	12 kn / 17 kn	257
4400 Aluminium	144' 0" (44 m)	27' 0" (8.50 m)	8' 2" (2.50 m)	17 kn / 23 kn	458
Aluminium semi displacement motor yacht	144' 0" (44 m)	27' 0" (8.43 m)	7' 3" (2.20 m)	14 kn / 17 kn	377
55m steel	180' 0" (55 m)	31' 0" (9.60 m)		12 kn / 15.5 kn	766
N/A	164' 0" (49.98 m)	29' 0" (9 m)	7' 1" (2.15 m)	11 kn / 23 kn	499

SPECIFICATIONS

LOA:

180' 0" (55 m)

Max Draft:

10' 5" (3.17 m)

Cruise Speed:

13.5 kn / 15.54 mph

Gross Tonnage:

760 Pounds

Fuel Capacity:

26400 Gallons

Sleeps:

8

Crew Cabin:

7

Hull Material:

Steel Yachts

Hull Configuration:

Monohull

Interior Designer:

Luca Dini Design

Engines:

2

Engine Type:

Inboard

Beam:

31' 0" (9.60 m)

Max Speed:

15.5 kn / 17.84 mph

Water Capacity:

6340 Gallons

Total Heads:

8

Crew Berths:

14

Deck Material:

Steel

Hull Designer:

Van Oossanen

Manufacturer:

MTU

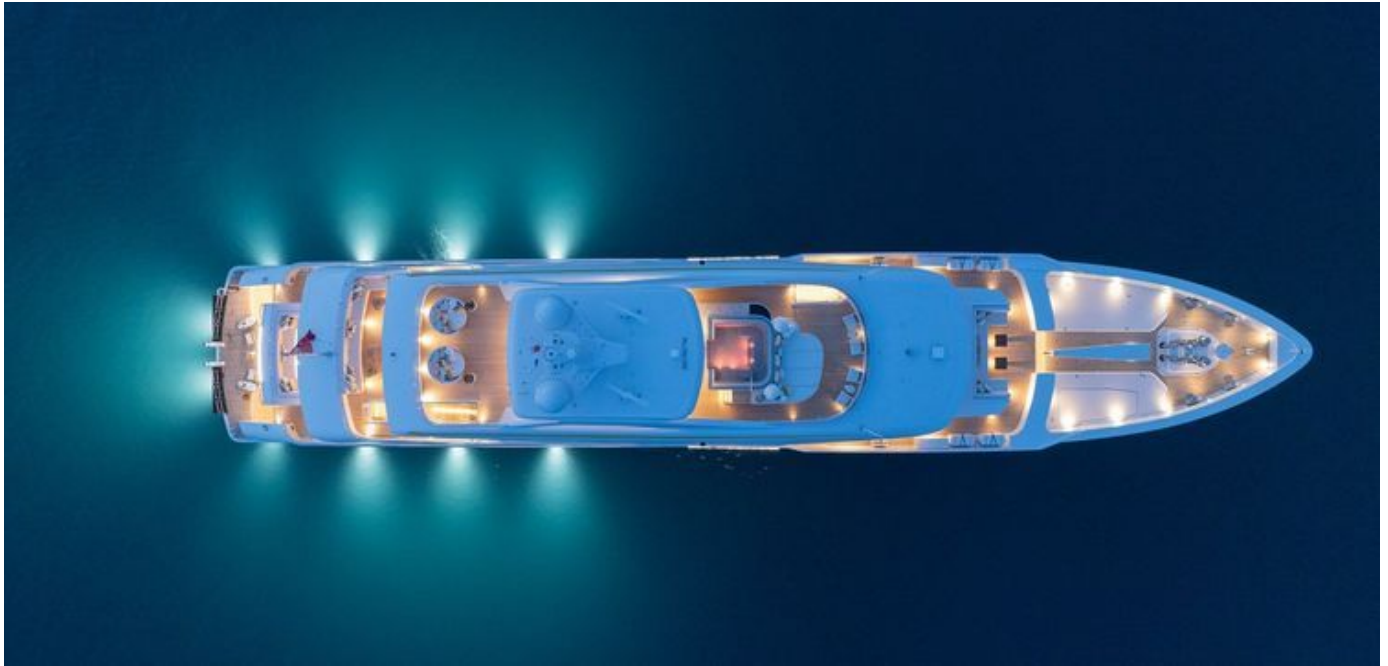
Fuel Type:

Diesel

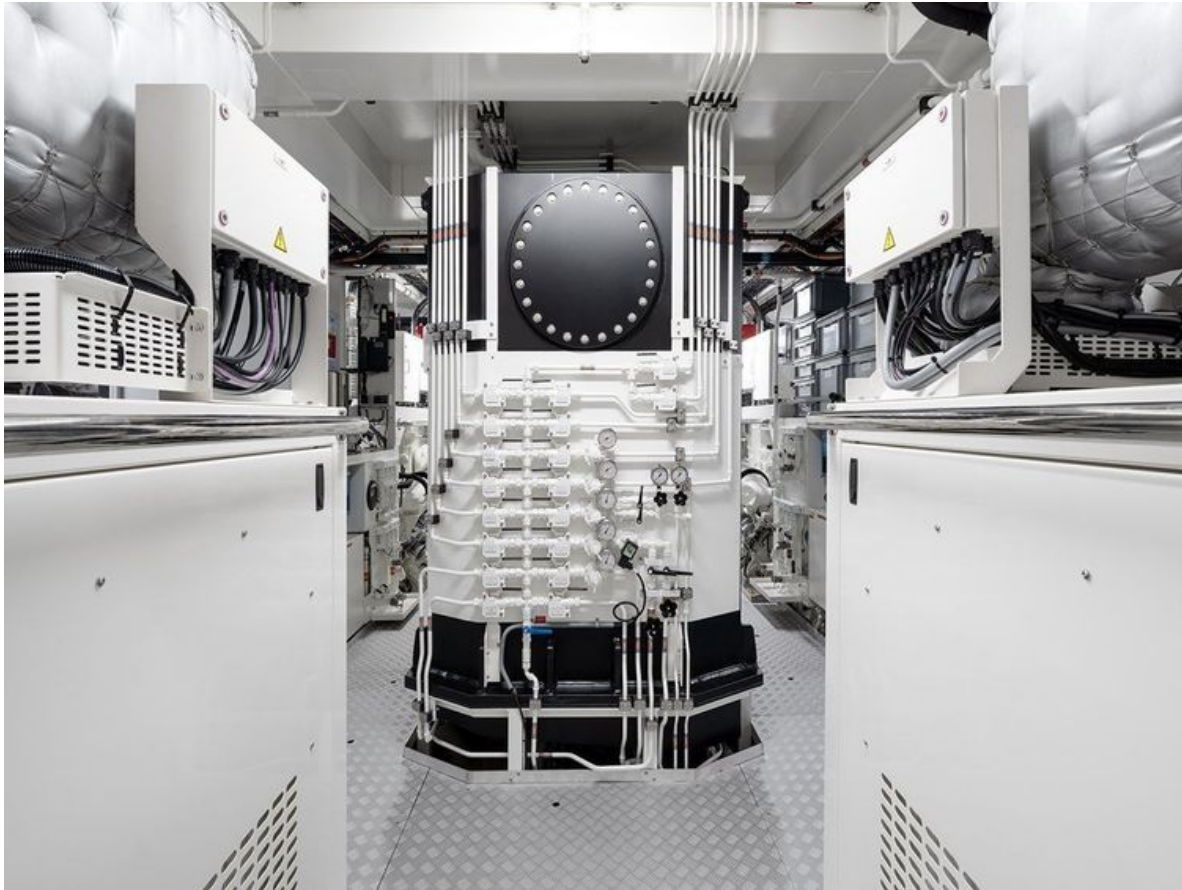
GALLERY











CONTACTS

Shestakov Yacht Sales is a brokerage company specializing in the sale and service of yachts worldwide. The company offers services for buying and selling both new and used motor yachts, sailing vessels, and luxury superyachts. They also provide yacht registration, insurance, technical maintenance, crew selection, and charter organization services across the U.S., Canada, Latin America, the Caribbean, and the Bahamas.

The founder and lead broker of the company is Andrey Shestakov, a licensed and certified expert with extensive experience in marine engineering and shipbuilding.

The company has an extensive network of partnerships with major yacht manufacturers worldwide and provides services in multiple languages, including Russian, Ukrainian, Spanish, and English. The office is in Dania Beach, Florida, USA.

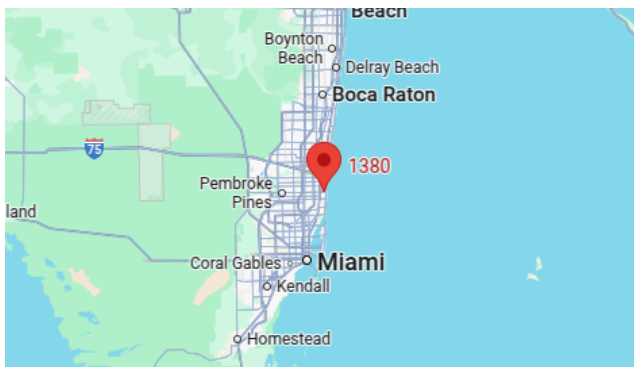
For more information and to view available yachts, you can visit the company's official website: <https://shestakovyachtsales.com>

Contact details

Phone: +1(954)274-4435

Email: andrey@shestakovyachtsales.com

Address



1380 Weeping Willow Way, Hollywood,
Florida 33019