



SHESTAKOV

Yacht Sales

CUSTOM – HEESEN YACHTS



Builder:

Heesen Yachts

Model:

CUSTOM

LOA:

180' 0" (55 m)

Beam:

30' 0" (9.40 m)

Max Draft:

9' 10" (3 m)

Cruise Speed:

17 kn / 19.56 mph

Max Speed:

25 kn / 28.77 mph

Gross Tonnage:

781 Pounds

Water Capacity:

7925.16 Gallons

Fuel Capacity:

33021.51 Gallons

Total Heads:

2

Crew Berths:

7

If you would like to buy a yacht **CUSTOM – Heesen Yachts** or would like help, please call +1(954)274-4435 or visit shestakovyachtsales.com

TABLE OF CONTENTS

OVERVIEW 3

- Selecting a CUSTOM 3
- Features of the Model 3
- Technical Specifications 4
- Pricing and Ordering 4
- Questions and Answers 5
- Owner Experience Review 5
- Pros and Cons 6
- Comparison with Other Models 7

SPECIFICATIONS 8

GALLERY 9

CONTACTS 14

OVERVIEW

CUSTOM by Heesen Yachts is a 180 ft (55 m) semi-displacement motor yacht laid up on an aluminum hull. Powered by twin MTU inboard diesel units and finished inside by Ken Freivokh and Reverberi Design, this 781 GT vessel combines brisk performance with long-range comfort for as many as 12 guests.

Selecting a CUSTOM

Choosing CUSTOM is ideal for owners who prioritize a lightweight, robust aluminum construction platform that delivers both speed and efficiency. With a 30 ft (9.4 m) beam and a 3 m (9.843 ft) draft, the yacht offers confident seakeeping and access to diverse cruising areas; typical passage planning benefits from a 17-knot cruising speed and a 25-knot maximum. For personalized advice on whether CUSTOM fits your requirements, contact Andrey Shestakov and the team at Shestakov Yacht Sales.

Features of the Model

- Category and build: Semi-displacement motor yacht constructed with aluminum hull and decks.
- Performance: Capable of 17 kn (19.56 mph) cruising and a 25 kn (28.77 mph) top speed.
- Design pedigree: Hull drawn by Heesen with interior styling by Ken Freivokh and Reverberi Design.
- Volume and comfort: 781 GT overall volume; accommodation configured for 12 guests with 2 heads and sleeping space for 7 crew.
- Machinery: Twin MTU inboard diesel propulsion.
- Capacities: Fuel capacity 33,021.51 gal and potable water capacity 7,925.16

gal.

- Builder: Produced by Heesen Yachts.

Technical Specifications

- Type: motor yacht
- Hull configuration: Semi-Displacement
- Hull material: aluminum
- Deck material: Aluminum
- Length overall (LOA): 180 ft (55 m)
- Beam: 30 ft (9.4 m)
- Draft (max): 9.843 ft (3 m)
- Gross tonnage: 781 GT
- Engines: 2 x MTU, Inboard, Diesel
- Speed (cruise): 17 kn (19.56 mph)
- Speed (max): 25 kn (28.77 mph)
- Accommodations: 12
- Heads: 2
- Crew beds: 7
- Hull designer: Heesen
- Interior designers: Ken Freivokh, Reverberi Design
- Fuel capacity: 33,021.51 gal
- Fresh water capacity: 7,925.16 gal

Pricing and Ordering

Price and delivery status are available upon request. To review specifications, lead times, or to schedule inspections of similar motor yachts built in aluminum construction, reach out to Andrey Shestakov at Shestakov Yacht Sales. Our advisors can assist in configuring your CUSTOM with Heesen Yachts

to match your cruising objectives and onboard lifestyle.

Questions and Answers

- What are the key dimensions of CUSTOM? The yacht's principal measurements are **LOA** 180 ft (55 m), **Beam** 30 ft (9.4 m), **Draft** 9.843 ft (3 m), and a **Gross tonnage** of 781 GT.
- How fast does it go? The yacht achieves a **Cruising speed** of 17 kn (19.56 mph) and a **Maximum speed** of 25 kn (28.77 mph).
- What is the hull type and material? The vessel is a Semi-Displacement hull constructed from an aluminum hull.
- Who designed it? The **Designers** include a hull by Heesen with interiors by Ken Freivokh and Reverberi Design; the builder is Heesen Yachts.
- How many people can stay aboard and what powers the yacht? Accommodations are for **Guests** up to 12 with **Heads** 2 and **Crew beds** 2. Propulsion is provided by **2 x MTU Inboard Diesel** engines.

Owner Experience Review

Owners who opt for the CUSTOM route with Heesen Yachts are frequently private family cruisers seeking a yacht that mirrors their routines rather than a one-size-fits-all solution. The build process supports iterative adjustments—many owners note they had “the opportunity to refine the design and make many small changes”—and the spec/semi custom track can deliver significant personalization with a shorter lead time compared to a fully custom three plus year program. Most owners consider a fully professional crew indispensable from day one for safe operation and proper maintenance.

Underway, reports on Heesen's larger steel/full displacement platforms indicate a composed, comfortable motion in typical offshore conditions; some bespoke projects, by contrast, pursue higher top-end speeds through

fast displacement concepts. As a point of reference, a 55m Heesen such as Solemates is cited at roughly 15.5/13 knots max/cruise with extended range capability—numbers that reflect serious blue water potential rather than speed chasing.

On board, owners regularly commend the level of craftsmanship and finish—one remarked it was “the best we’ve done”—and crews appreciate service circulation and galleys laid out for professional work, often adequate for two chefs. Behind the scenes, the “Dutch organized” machinery spaces simplify routine access, but ongoing upkeep is significant: preventative tasks commonly cover engines and generators, HVAC compressor swaps, PLC alarm/monitoring updates, and CO2 fire system re-certification. Financially, annual operating and maintenance projections for yachts in this class are substantial, frequently estimated around 10–15% of the asset’s value.

Pros and Cons

- Extensive opportunities for personalization through Heesen Yachts’s custom and spec/semi custom offerings.
- Reported smooth and secure seakeeping on steel/full displacement projects of this size.
- Practical service routes, chef capable galleys, and well arranged machinery rooms.
- A full professional crew is typically essential to operate and maintain the vessel.
- Operating and maintenance expenses are considerable, commonly planned at about 10–15% of the yacht’s value annually.
- Preventive maintenance routines are continuous and technical, from HVAC compressor replacements to PLC and CO2 system servicing.

Comparison with Other Models

Model	LOA	Beam	Draft	Speed (Cruising/Max)	Gross Tonnage
CUSTOM	180' 0" (55 m)	30' 0" (9.40 m)	9' 10" (3 m)	17 kn / 25 kn	781
44M	146' 0" (44.68 m)	29' 0" (9.10 m)	25' 10" (7.87 m) – 27' 11" (8.50 m)	12 kn / 23 kn	458
38 meter	123' 0" (37.69 m)	24' 0" (7.40 m)	6' 11" (2.10 m) – 7' 10" (2.40 m)	10 kn / 13 kn	290
1996 Heesen	125' 0" (38.38 m)	24' 0" (7.42 m)	22' 8" (6.92 m)	8 kn / 28 kn	232
Trideck	125' 0" (38.10 m)	25' 0" (7.62 m)	26' 10" (8.17 m)	12 kn / 17 kn	257
4400 Aluminium	144' 0" (44 m)	27' 0" (8.50 m)	8' 2" (2.50 m)	17 kn / 23 kn	458
Aluminium semi displacement motor yacht	144' 0" (44 m)	27' 0" (8.43 m)	7' 3" (2.20 m)	14 kn / 17 kn	377
55m	180' 0" (55 m)	31' 0" (9.60 m)	10' 5" (3.17 m)	13.5 kn / 15.5 kn	760
55m steel	180' 0" (55 m)	31' 0" (9.60 m)		12 kn / 15.5 kn	766
N/A	164' 0" (49.98 m)	29' 0" (9 m)	7' 1" (2.15 m)	11 kn / 23 kn	499

SPECIFICATIONS

LOA:

180' 0" (55 m)

Max Draft:

9' 10" (3 m)

Cruise Speed:

17 kn / 19.56 mph

Gross Tonnage:

781 Pounds

Fuel Capacity:

33021.51 Gallons

Total Heads:

2

Hull Material:

Aluminum Yachts

Hull Configuration:

Semi-Displacement

Interior Designer:

Ken Freivokh, Reverberi Design

Engines:

2

Engine Type:

Inboard

Beam:

30' 0" (9.40 m)

Max Speed:

25 kn / 28.77 mph

Water Capacity:

7925.16 Gallons

Crew Berths:

7

Deck Material:

Aluminum

Hull Designer:

Heesen

Manufacturer:

MTU

Fuel Type:

Diesel

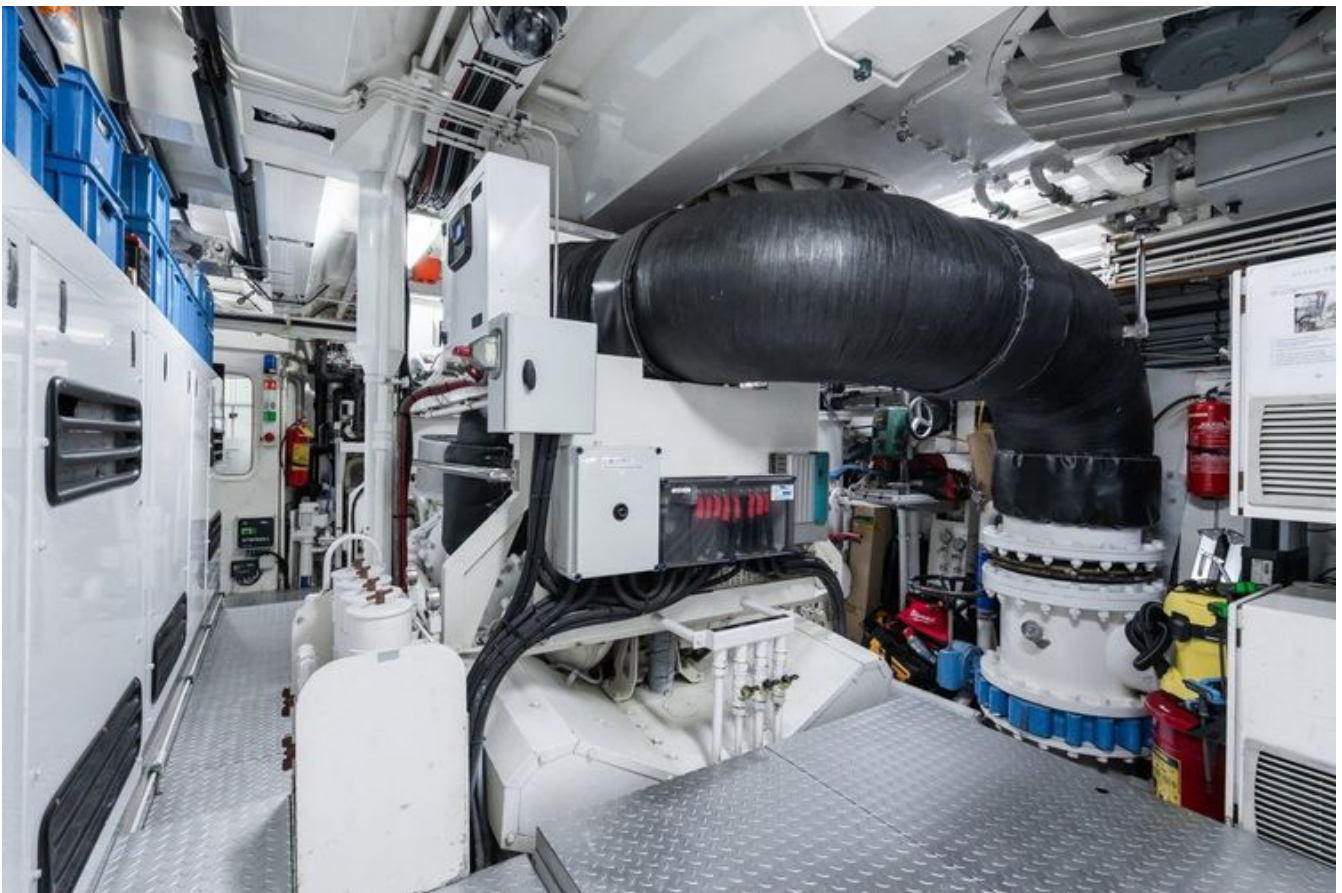
GALLERY











CONTACTS

Shestakov Yacht Sales is a brokerage company specializing in the sale and service of yachts worldwide. The company offers services for buying and selling both new and used motor yachts, sailing vessels, and luxury superyachts. They also provide yacht registration, insurance, technical maintenance, crew selection, and charter organization services across the U.S., Canada, Latin America, the Caribbean, and the Bahamas.

The founder and lead broker of the company is Andrey Shestakov, a licensed and certified expert with extensive experience in marine engineering and shipbuilding.

The company has an extensive network of partnerships with major yacht manufacturers worldwide and provides services in multiple languages, including Russian, Ukrainian, Spanish, and English. The office is in Dania Beach, Florida, USA.

For more information and to view available yachts, you can visit the company's official website: <https://shestakovyachtsales.com>

Contact details

Phone: +1(954)274-4435

Email: andrey@shestakovyachtsales.com

Address



1380 Weeping Willow Way, Hollywood,
Florida 33019