



SHESTAKOV

Yacht Sales

18 X 88 - HORIZON YACHTS



Builder:

Horizon Yachts

Model:

18 x 88

LOA:

88' 0" (26.82 m)

Beam:

18' 0" (5.49 m)

Hull Material:

Aluminum Yachts

Deck Material:

Aluminum

Engines:

1

Manufacturer:

Unknown

If you would like to buy a yacht **18 X 88 - Horizon Yachts** or would like help, please call +1(954)274-4435 or visit shestakovyachtsales.com

TABLE OF CONTENTS

OVERVIEW 3

- Selecting a 18 x 88 3
- Features of the Model 3
- Technical Specifications 4
- Pricing and Ordering 4
- Questions and Answers 4
- Owner Experience Review 5
- Pros and Cons 6
- Comparison with Other Models 6

SPECIFICATIONS 8

GALLERY 9

CONTACTS 14

OVERVIEW

The 18 x 88 by Horizon Yachts presents an 88 ft (26.82 m) hull with an 18 ft (5.49 m) beam on a versatile platform. Built as a motor yacht with a home-oriented houseboat layout and a durable aluminum hull, it is configured for extended stays aboard. For assistance with selection, pricing, and acquisition, Shestakov Yacht Sales and broker Andrey Shestakov provide full support.

Selecting a 18 x 88

For buyers seeking substantial interior volume in a manageable overall length, the 18 x 88 achieves a strong compromise between living space and footprint. The single-engine arrangement simplifies operation, while the aluminum hull and aluminum deck underline long-term durability. Marketed as a motor yacht with a homeowner-centric houseboat concept, it appeals to owners who prioritize comfort-first interiors and efficient, low-speed cruising. Reach out to Andrey Shestakov at Shestakov Yacht Sales to match this model's layouts and option packages to your cruising intentions.

Features of the Model

- Dimensions optimized for space: LOA 88 ft (26.82 m), beam 18 ft (5.49 m)
- Robust construction: aluminum hull paired with an aluminum deck
- Straightforward propulsion: single-engine installation (engine manufacturer: Unknown)
- Category fit: motor yacht exhibiting houseboat characteristics
- Professional brokerage support from Shestakov Yacht Sales and Andrey Shestakov

Technical Specifications

- Length overall (LOA): 88 ft (26.82 m)
- Beam: 18 ft (5.49 m)
- Engines: 1 (manufacturer: Unknown)
- Hull material: aluminum
- Deck material: Aluminum
- Builder: Horizon Yachts
- Category: motor yacht / houseboat

Pricing and Ordering

Current pricing, availability, and recommended configurations for the 18 x 88 are provided upon request. Contact Andrey Shestakov at Shestakov Yacht Sales to obtain a personalized quote, confirm delivery timelines, verify specifications (including the single engine package with manufacturer listed as Unknown), and discuss purchase logistics.

Questions and Answers

Q: What type of yacht is the 18 x 88? A: It is a motor yacht configured with a comfortable houseboat layout and built on a robust aluminum hull. This **classification** favors generous living areas and practical cruising.

Q: What are the principal dimensions? A: The **LOA** measures 88 ft (26.82 m) and the **beam** measures 18 ft (5.49 m), delivering a roomy interior relative to the yacht's overall length.

Q: What are the hull and deck materials? A: The hull is specified as aluminum, and the deck material is **Aluminum**, selected for strength and reduced maintenance.

Q: What is the propulsion setup? A: The model is offered with a **single engine** configuration; the engine manufacturer is listed as **Unknown** in the available data. Shestakov Yacht Sales can advise on the powerplant options.

Q: Who builds this model and how do I order? A: The 18 x 88 is manufactured by Horizon Yachts. For **pricing** and ordering assistance, contact Andrey Shestakov at Shestakov Yacht Sales for end to end support from selection to close.

Owner Experience Review

Owners often choose the 18 x 88 from Horizon Yachts for extended living aboard in inland environments—rivers, lakes, and marina slips—where its 88 foot length and 18 foot beam produce a residence like volume. Sales history includes use as a liveaboard on the Tennessee River, and photos/layouts typically showcase a spacious salon and a full galley that support family weekends and longer stays with ease. The aluminum hull combined with a wide beam yields a settled, platform first sensation in tranquil waters, emphasizing onboard comfort over athletic performance.

On the water, the yacht handles like a displacement cruiser tuned for low speed passages suited to lakes and sheltered waterways; owners report confidence in protected conditions but note it is not designed for open ocean, heavy sea operations. Service histories shared by brokers highlight regular upkeep and periodic refits, with common maintenance focus areas including the generator, HVAC systems, and propulsion/drivetrain components. The aluminum structure benefits from routine anode inspection and careful electrical/galvanic system monitoring, and many listings indicate a single engine layout that simplifies system architecture while reducing redundancy—so planning maintenance intervals and ensuring marina support is advisable. Performance numbers depend on individual outfitting and are not

consistently listed across examples.

Pros and Cons

- Expansive living volume from the 88' LOA × 18' beam makes it well suited to liveaboard lifestyles and family getaways.
- The wide beam and aluminum hull provide a steady, platform oriented character in calm inland waters.
- Interior arrangements and systems are focused on comfortable living; sellers frequently report regular maintenance and upgrades.
- Unsuitable for offshore or heavy sea conditions; best operated in rivers, lakes, and protected waters.
- Displacement, low speed cruising temperament favors comfort over fast passages.
- Frequent single engine configurations reduce redundancy and increase dependence on timely servicing and parts availability.

Comparison with Other Models

Model	LOA	Beam	Draft	Speed (Cruising/ Max)	Gross Tonnage
18 x 88	88' 0" (26.82 m)	18' 0" (5.49 m)			
CC115	115' 0" (35.08 m)	25' 0" (7.62 m)		14 kn	276
E90	95' 0" (28.96 m)	21' 0" (6.40 m)	17' 9" (5.42 m)		
82 Cockpit Motoryacht	82' 0" (24.99 m)	20' 0" (6.10 m)	19' 8" (6 m)	10 kn / 18 kn	87
FD80	80' 0" (24.56 m)	22' 0" (6.86 m)	18' 4" (5.58 m)		
Vision 74	74' 0" (22.56 m)	18' 0" (5.61 m)			

FD100-911 NOW AVAILABLE	101' 0" (30.96 m)	23' 0" (7.09 m)	19' 5" (5.92 m) – 20' 6" (6.25 m)		
PC60	60' 0" (18.52 m)	24' 0" (7.47 m)	15' 10" (4.83 m)	19 kn / 24 kn	
Horizon V77s	79' 0" (24.23 m)	19' 0" (5.94 m)	17' 3" (5.25 m) – 17' 9" (5.42 m)		
E81 (NEW BUILD SPECS)	83' 0" (25.32 m)	20' 0" (6.25 m)	19' 5" (5.92 m)		

SPECIFICATIONS

LOA:

88' 0" (26.82 m)

Hull Material:

Aluminum Yachts

Engines:

1

Beam:

18' 0" (5.49 m)

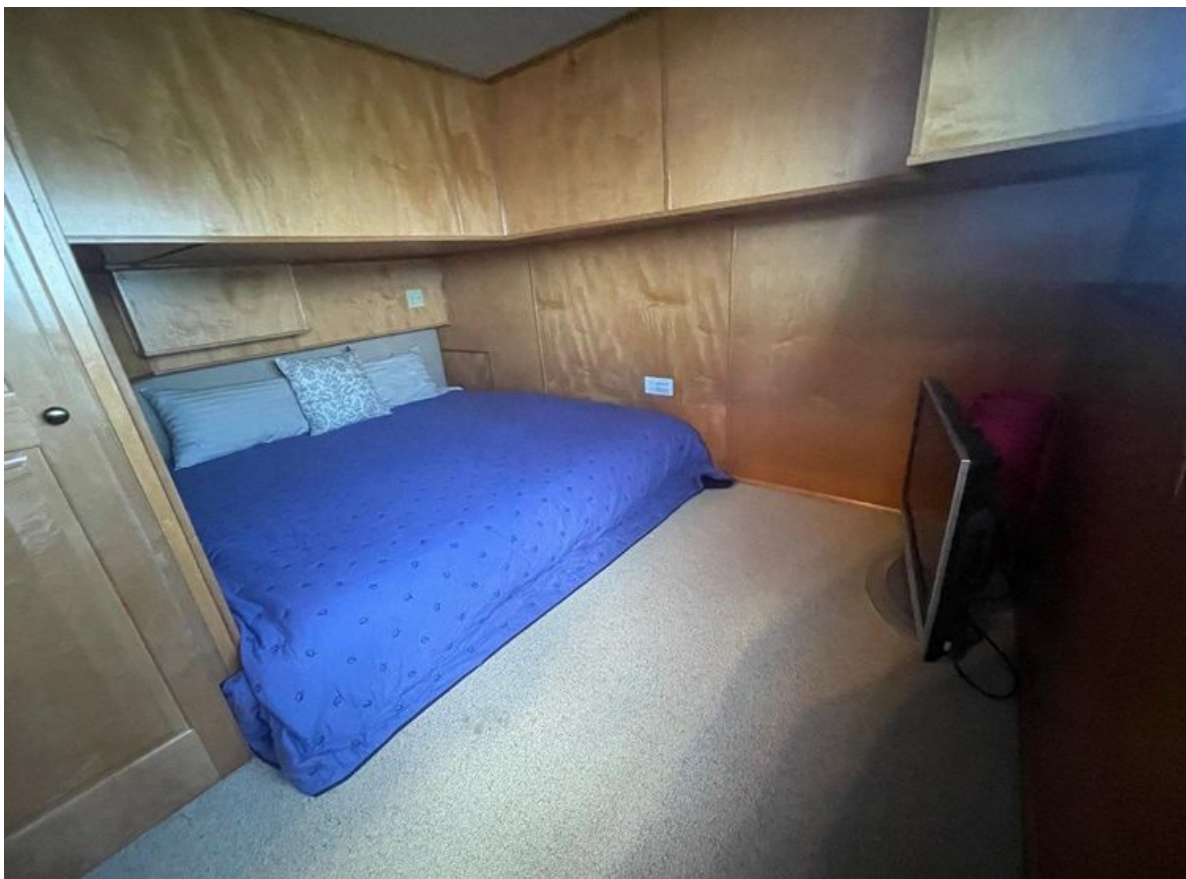
Deck Material:

Aluminum

Manufacturer:

Unknown

GALLERY











CONTACTS

Shestakov Yacht Sales is a brokerage company specializing in the sale and service of yachts worldwide. The company offers services for buying and selling both new and used motor yachts, sailing vessels, and luxury superyachts. They also provide yacht registration, insurance, technical maintenance, crew selection, and charter organization services across the U.S., Canada, Latin America, the Caribbean, and the Bahamas.

The founder and lead broker of the company is Andrey Shestakov, a licensed and certified expert with extensive experience in marine engineering and shipbuilding.

The company has an extensive network of partnerships with major yacht manufacturers worldwide and provides services in multiple languages, including Russian, Ukrainian, Spanish, and English. The office is in Dania Beach, Florida, USA.

For more information and to view available yachts, you can visit the company's official website: <https://shestakovyachtsales.com>

Contact details

Phone: +1(954)274-4435

Email: andrey@shestakovyachtsales.com

Address



1380 Weeping Willow Way, Hollywood,
Florida 33019