



SHESTAKOV

Yacht Sales

FD87 - HORIZON YACHTS



Builder:

Horizon Yachts

Model:

FD87

LOA:

90' 0" (27.46 m)

Beam:

23' 0" (7.09 m)

Max Draft:

18' 7" (5.67 m)

Cruise Speed:

15 kn / 17.26 mph

Max Speed:

20 kn / 23.02 mph

Water Capacity:

400 Gallons

Fuel Capacity:

3480 Gallons

Total Heads:

7

Crew Cabin:

2

Crew Berths:

3

If you would like to buy a yacht **FD87 - Horizon Yachts** or would like help, please call +1(954)274-4435 or visit shestakovyachtsales.com

TABLE OF CONTENTS

OVERVIEW	3
Selecting a FD87	3
Features of the Model	3
Technical Specifications	4
Pricing and Ordering	4
Questions and Answers	5
Owner Experience Review	5
Pros and Cons	6
Comparison with Other Models	7
SPECIFICATIONS	8
GALLERY	9
CONTACTS	14

OVERVIEW

Discover the FD87 from Horizon Yachts, a modern motor yacht built on a fiberglass construction hull. Offered by Shestakov Yacht Sales with broker Andrey Shestakov, this 90-foot platform is engineered to provide roomy living areas, reliable systems, and a performance profile suited to extended cruising with a professional crew aboard.

Selecting a FD87

If your priority is a broad-beamed, offshore-capable motor yacht that pairs spacious living quarters with capable speeds, the FD87 should be on your shortlist. Its 23 ft (7.09 m) beam, room for up to 10 guests, and dedicated crew accommodations (2 cabins supporting 3 berths) make it a strong option for owners who value privacy, attentive service, and family-oriented arrangements. With a typical cruise of 15 kn (17.26 mph) and a top end of 20 kn (23.02 mph), the yacht suits both short escapes and longer passages. To check availability and tailor configurations, contact Andrey Shestakov at Shestakov Yacht Sales.

Features of the Model

- Dimensions designed for maximum internal volume and comfort: 90 ft (27.46 m) LOA with a 23 ft (7.09 m) beam
- Reliable on-water performance: 15 kn cruise (17.26 mph) and 20 kn top speed (23.02 mph)
- Proven propulsion: twin MTU inboard diesel engine package
- Solid construction: fiberglass construction hull paired with a fiberglass deck
- Generous guest capacity: sleeping arrangements for up to 10 guests with 7 heads

- Professional crew facilities: 2 dedicated cabins providing 3 berths for crew
- Range-minded tankage: 3,480 gal fuel capacity and 400 gal fresh water capacity

Technical Specifications

- Builder: Horizon Yachts
- Model: FD87
- Type: motor yacht
- Hull: fiberglass and plastic
- LOA: 90 ft (27.46 m)
- Beam: 23 ft (7.09 m)
- Max Draft: 18.591 ft (5.6666 m)
- Cruise Speed: 15 kn (17.26 mph)
- Max Speed: 20 kn (23.02 mph)
- Engines: 2 x MTU, Inboard, Diesel
- Accommodations: 10
- Heads: 7
- Crew: 2 cabins, 3 berths
- Fuel Capacity: 3,480 gal
- Fresh Water Capacity: 400 gal
- Deck Material: Fiberglass

Pricing and Ordering

For up-to-date pricing, build lead times, and guidance on options for the FD87 from Horizon Yachts, please reach out to Andrey Shestakov at Shestakov Yacht Sales. We will help align the yacht's specification, outfitting, and delivery schedule with your cruising plans and manage the process from selection through final handover.

Questions and Answers

Q: What performance can I expect from the FD87? A: The model is rated for a **cruise speed** of 15 kn (17.26 mph) and a **maximum speed** of 20 kn (23.02 mph), driven by twin **MTU inboard diesel** engines specified by Horizon Yachts.

Q: How many guests and crew does the yacht accommodate? A: The layout supports **accommodations for 10** guests with **7 heads** , plus dedicated crew quarters consisting of **2 crew cabins** with **3 berths** , ensuring a clear separation between owner/guest and crew spaces.

Q: What are the key dimensions of this motor yacht? A: The yacht measures **LOA** 90 ft (27.46 m), with a **beam** of 23 ft (7.09 m) and a **maximum draft** of 18.591 ft (5.6666 m), providing notable interior volume and stability underway.

Q: What is the hull construction of the FD87? A: This motor yacht is built on a fiberglass and plastic hull with a **fiberglass** deck, designed for durability and straightforward maintenance.

Q: What are the fuel and water capacities for extended cruising? A: Tankage includes a **fuel capacity** of 3,480 gal and a **fresh water capacity** of 400 gal, supporting extended passages when paired with proper provisioning. For detailed provisioning plans, contact Andrey Shestakov at Shestakov Yacht Sales.

Owner Experience Review

Owners typically employ the FD87 for the roles it was intended for: owner-operated family cruising, extended coastal hops, and small-crew private charters along the U.S. East Coast and into the Bahamas and Caribbean. The on-deck master suite consistently ranks as a standout feature, often cited as essential; it is complemented by ample guest accommodations and multiple

entertainment areas—the aft deck, bow lounge, boat deck, and a true beach club—designed to enhance family enjoyment and socializing.

On passage, captains describe the yacht as offering a steady, dry ride. The FD hull in combination with ABT TRAC stabilizers receives regular commendation for seakeeping in the 6–10 ft conditions common to East Coast and Caribbean cruising; one captain observed the vessel “handled it fine—nothing was creaking or rattling,” while another reported that in 4–6 ft seas at 10–12 knots it felt almost like calm water. These reports reflect the FD87’s reputation as a reassuring, competent platform for everyday coastal use.

Routine maintenance notes are practical: owners and crew praise the accessible engine room, onboard air-conditioning in the machinery space, and systems that are simple to understand and maintain. During 2020 commissioning cycles, owners noted minimal issues and appreciated the responsiveness of Horizon Yachts’ USA support and shipyard teams, who “went above and beyond” to obtain parts and services amid COVID-19 challenges.

Brokerage records indicate most resale activity for the FD87 centers on hulls built between 2019 and 2021, with owners following standard professional maintenance schedules and operating budgets in line with superyacht expectations.

Pros and Cons

- On-deck master and large social zones, including a beach club, make the FD87 particularly suited to family life and entertaining.
- ABT TRAC stabilizers combined with the FD hull produce a stable, dry ride in typical 6–10 ft East Coast/Bahamas conditions, with reports that 4–6 ft at 10–12 knots can feel like flat calm.
- A practical engine room outfitted with A/C and straightforward, proven systems eases daily operation and servicing.

- Ownership entails routine professional maintenance and operating budgets consistent with superyacht-level care.
- Most owner and captain feedback focuses on comfort at 10–12 knots in 6–10 ft seas; performance data in more severe or higher-speed scenarios is less documented.
- Available brokerage inventory favors 2019–2021 hulls, which may limit options for buyers seeking later-year examples.

Comparison with Other Models

Model	LOA	Beam	Draft	Speed (Cruising/Max)	Gross Tonnage
FD87	90' 0" (27.46 m)	23' 0" (7.09 m)	18' 7" (5.67 m)	15 kn / 20 kn	
CC115	115' 0" (35.08 m)	25' 0" (7.62 m)		14 kn	276
E90	95' 0" (28.96 m)	21' 0" (6.40 m)	17' 9" (5.42 m)		
82 Cockpit Motoryacht	82' 0" (24.99 m)	20' 0" (6.10 m)	19' 8" (6 m)	10 kn / 18 kn	87
FD80	80' 0" (24.56 m)	22' 0" (6.86 m)	18' 4" (5.58 m)		
Vision 74	74' 0" (22.56 m)	18' 0" (5.61 m)			
FD100-911 NOW AVAILABLE	101' 0" (30.96 m)	23' 0" (7.09 m)	19' 5" (5.92 m) – 20' 6" (6.25 m)		
PC60	60' 0" (18.52 m)	24' 0" (7.47 m)	15' 10" (4.83 m)	19 kn / 24 kn	
Horizon V77s	79' 0" (24.23 m)	19' 0" (5.94 m)	17' 3" (5.25 m) – 17' 9" (5.42 m)		
E81 (NEW BUILD SPECS)	83' 0" (25.32 m)	20' 0" (6.25 m)	19' 5" (5.92 m)		

SPECIFICATIONS

LOA:

90' 0" (27.46 m)

Max Draft:

18' 7" (5.67 m)

Cruise Speed:

15 kn / 17.26 mph

Water Capacity:

400 Gallons

Total Heads:

7

Crew Berths:

3

Hull Material:

Fiberglass and Plastic Yachts

Engines:

2

Engine Type:

Inboard

Beam:

23' 0" (7.09 m)

Max Speed:

20 kn / 23.02 mph

Fuel Capacity:

3480 Gallons

Crew Cabin:

2

Deck Material:

Fiberglass

Manufacturer:

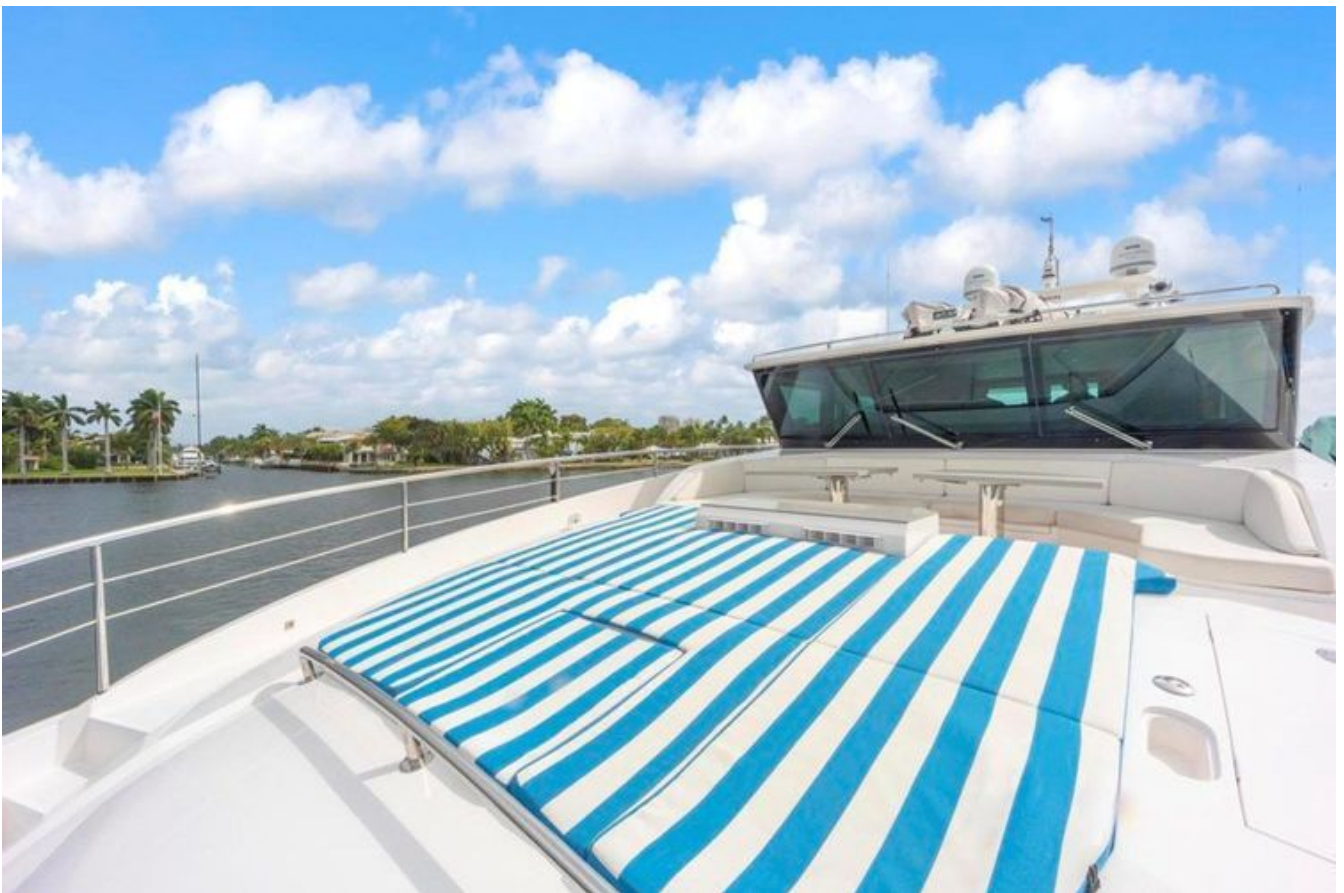
MTU

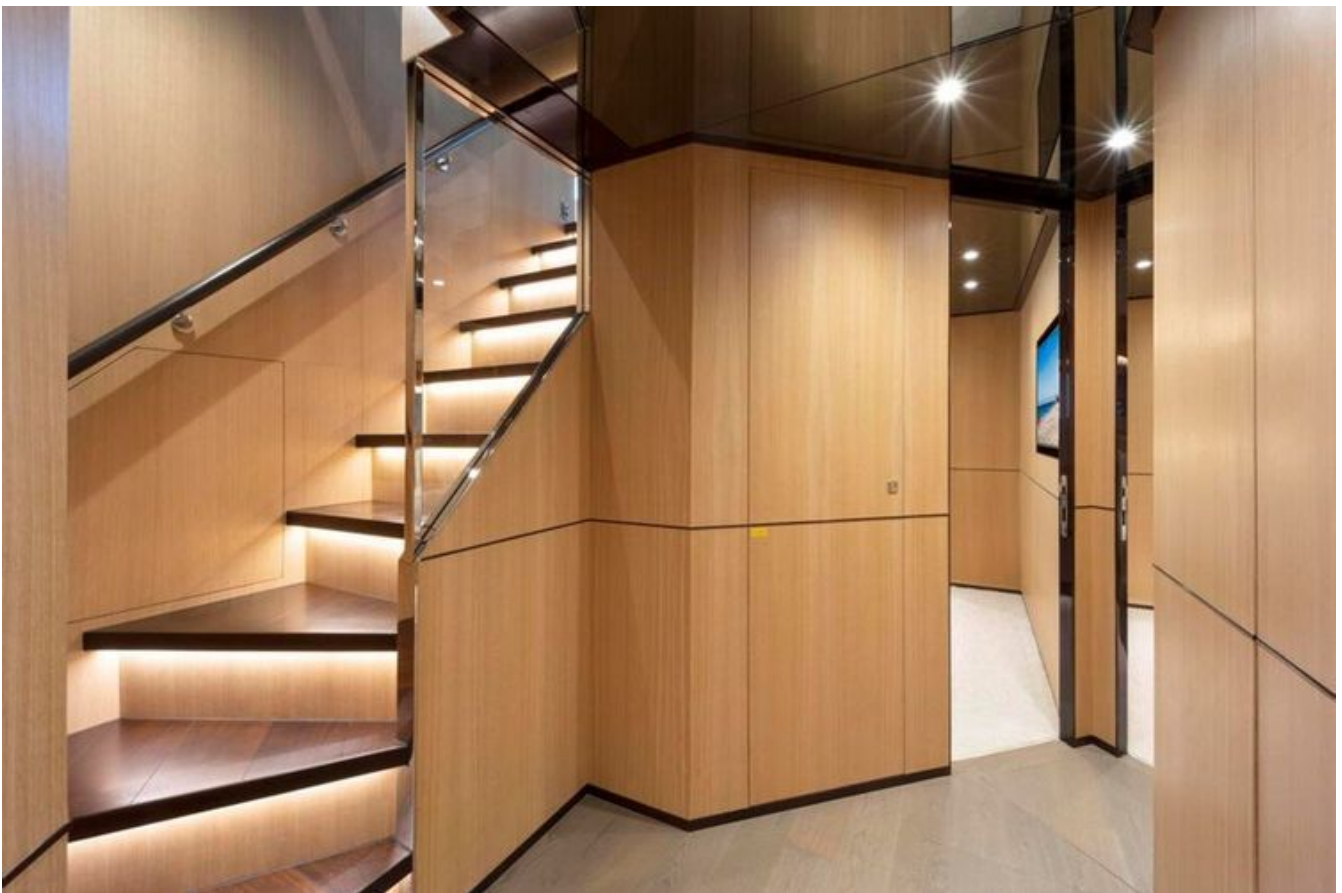
Fuel Type:

Diesel

GALLERY











CONTACTS

Shestakov Yacht Sales is a brokerage company specializing in the sale and service of yachts worldwide. The company offers services for buying and selling both new and used motor yachts, sailing vessels, and luxury superyachts. They also provide yacht registration, insurance, technical maintenance, crew selection, and charter organization services across the U.S., Canada, Latin America, the Caribbean, and the Bahamas.

The founder and lead broker of the company is Andrey Shestakov, a licensed and certified expert with extensive experience in marine engineering and shipbuilding.

The company has an extensive network of partnerships with major yacht manufacturers worldwide and provides services in multiple languages, including Russian, Ukrainian, Spanish, and English. The office is in Dania Beach, Florida, USA.

For more information and to view available yachts, you can visit the company's official website: <https://shestakovyachtsales.com>

Contact details

Phone: +1(954)274-4435

Email: andrey@shestakovyachtsales.com

Address



1380 Weeping Willow Way, Hollywood,
Florida 33019