



SHESTAKOV

Yacht Sales

## 33 - HUNTER



**Builder:**

HUNTER

**Model:**

33

**LOA:**

33' 0" (10.21 m)

**Min Draft:**

14' 9" (4.50 m)

**Beam:**

11' 0" (3.50 m)

**Max Draft:**

18' 1" (5.50 m)

**Cruise Speed:**

5.34 kn / 6.14 mph

**Max Speed:**

10 kn / 11.51 mph

**Gross Tonnage:**

5 Pounds

**Water Capacity:**

50 Gallons

**Fuel Capacity:**

25 Gallons

**Sleeps:**

4

If you would like to buy a yacht **33 - HUNTER** or would like help, please call +1(954)274-4435 or visit [shestakovyachtsales.com](http://shestakovyachtsales.com)

---

# TABLE OF CONTENTS

---

<b>OVERVIEW .....</b>	<b>3</b>
<b>Selecting a 33 .....</b>	<b>3</b>
<b>Features of the Model .....</b>	<b>3</b>
<b>Technical Specifications .....</b>	<b>3</b>
<b>Pricing and Ordering .....</b>	<b>4</b>
<b>Questions and Answers .....</b>	<b>4</b>
<b>Owner Experience Review .....</b>	<b>5</b>
<b>Pros and Cons .....</b>	<b>6</b>
<b>Comparison with Other Models .....</b>	<b>6</b>
<b>SPECIFICATIONS .....</b>	<b>8</b>
<b>GALLERY .....</b>	<b>9</b>
<b>CONTACTS .....</b>	<b>14</b>

---

## OVERVIEW

---

The 33 from HUNTER is a compact, adaptable cruising sailboat laid out as a sloop on a fiberglass and plastic hull. Listed by Andrey Shestakov of Shestakov Yacht Sales, this modestly sized cruiser pairs respected design names with practical seakeeping, making it well suited to couples or small families seeking a capable coastal yacht.

---

## Selecting a 33

---

Opt for the 33 if you want a user-friendly, cruise-ready sail yacht featuring the simplicity of a sloop rig and a sturdy fiberglass and plastic hull. With an LOA of 33 ft (10.21 m), an 11 ft (3.5 m) beam and a single Yanmar inboard diesel, it is aimed at relaxed coastal passages and confident handling in marinas. Contact Shestakov Yacht Sales and broker Andrey Shestakov to explore options, check current availability, and arrange inspections.

---

## Features of the Model

---

- Design pedigree: hull by Glenn Henderson; interior by Luiz de Basto
- Single inboard diesel by Yanmar for straightforward propulsion
- Monohull platform for predictable handling and comfort under sail
- Practical tankage for weekend cruising: 50 gal fresh water and 25 gal fuel
- Accommodations for up to 6 with 4 dedicated berths and 1 head
- Deck built in fiberglass for durability and easy maintenance

---

## Technical Specifications

---

- Builder: HUNTER

- Model: 33
- Type: sail yacht; Rig: sloop
- Hull: fiberglass and plastic; Configuration: Monohull
- LOA: 33 ft (10.21 m)
- Beam: 11 ft (3.5 m)
- Draft (min): 14.764 ft (4.5 m)
- Draft (max): 18.045 ft (5.5 m)
- Cruise Speed: 5.34 kn (6.14 mph)
- Max Speed: 10 kn (11.51 mph)
- Gross Tonnage: 5 GT
- Engine: 1 x Yanmar, Inboard, Diesel
- Water Capacity: 50 gal
- Fuel Capacity: 25 gal
- Deck Material: Fiberglass
- Hull Designer: Glenn Henderson
- Interior Designer: Luiz de Basto
- Accommodations: up to 6; Sleeps: 4; Heads: 1

## Pricing and Ordering

---

For up-to-date pricing, availability, or bespoke build and refit guidance on the 33 from HUNTER, reach out to Andrey Shestakov at Shestakov Yacht Sales. Our brokerage team will deliver comprehensive quotes, organize viewings, and handle the paperwork from initial offer through closing.

## Questions and Answers

---

Q: What type of yacht is the 33? A: It's a sail yacht rigged as a sloop on a monohull, built with a fiberglass and plastic hull, designed for straightforward handling.

Q: What are the key dimensions of the model? A: The **LOA** is 33 ft (10.21 m) and the **beam** is 11 ft (3.5 m), providing a stable platform for cruising and marina maneuvering.

Q: What is the draft range? A: The **draft** varies from 14.764 ft (4.5 m) to 18.045 ft (5.5 m); plan your passages and berthing with those depths in mind.

Q: How does it perform under way? A: Anticipate a **cruise speed** of 5.34 kn (6.14 mph) and a **max speed** of 10 kn (11.51 mph), appropriate for comfortable coastal runs.

Q: What about power and capacities on board? A: Propulsion comes from a single **engine** (Yanmar, **inboard diesel** ). Tankage includes **water** at 50 gal and **fuel** at 25 gal. Accommodations are listed for 6, with **sleeps** for 4 and 1 head. Contact Andrey Shestakov at Shestakov Yacht Sales for further information or to schedule a viewing.

## Owner Experience Review

---

Owners commonly view the 33 by HUNTER as a well-proportioned coastal cruiser for families, weekend sailors, and those new to offshore cruising; many examples also serve in charter fleets and club programs. Furling headsails and cockpit-led control lines make it straightforward for small crews or singlehanded, and numerous owners report using the vessel as a weekend platform or seasonal liveaboard during summer cruises.

Under sail the boat is described as responsive with acceptable pointing ability, with several owners noting steady upwind behavior and reasonable light-air performance relative to its displacement. Some owners with the original smaller diesel feel the engine is marginal in heavy conditions; later models (post-2011) featuring a hard chine are often praised for increased form stability and forgiving handling.

Belowdecks, the layout maximizes space for a couple or small family, featuring a multi purpose “Swiss Army” settee that doubles as a chart and cocktail table, though the forward cabin berth is often described as snug. Common maintenance concerns reported by owners include leaking side cabin windows/ports and deck fittings that periodically require re-bedding, with occasional reports of deck delamination repairs. A number of boats have undergone significant engine rebuilds or replacements over time. Owner feedback ranges from very positive to critical, with a minority describing repeated system failures and at least one strongly negative long term account.

## Pros and Cons

- Novice-friendly deck arrangement with furling headsails and cockpit-led lines makes short-handed sailing routine.
- Responsive handling with respectable pointing and solid light-air performance for its displacement.
- Efficient interior design with a versatile “Swiss Army” settee that suits couples and small families for weekend or short cruises.
- Recurrent leaks at side cabin windows and ports often necessitate re-sealing or replacement.
- Some original small-diesel installations feel underpowered in challenging conditions; several boats have required engine rebuilds or replacements.
- Owners report maintenance hotspots such as deck delamination and leaking deck fittings that need periodic re-bedding and fiberglass repairs.

## Comparison with Other Models

Model	LOA	Beam	Draft	Speed (Cruising/Max)	Gross Tonnage
33	33' 0" (10.21 m)	11' 0" (3.50 m)	14' 9" (4.50 m) – 18' 1" (5.50 m)	5.34 kn / 10 kn	5

340	34' 0" (10.36 m)				
30T	30' 0" (9.35 m)	11' 0" (3.35 m)	13' 8" (4.17 m)		
31	31' 0" (9.55 m)	11' 0" (3.35 m)	17' 3" (5.25 m)		
50 Center Cockpit	50' 0" (15.24 m)	14' 0" (4.50 m)	18' 1" (5.50 m)		33
410	40' 0" (12.34 m)	13' 0" (4.17 m)	19' 11" (6.08 m)		
336	34' 0" (10.36 m)	11' 0" (3.58 m)	14' 9" (4.50 m)	7 kn / 9 kn	12.33
356	34' 0" (10.52 m)	12' 0" (3.66 m)	16' 5" (5 m)		
44	44' 0" (13.41 m)	14' 0" (4.37 m)	16' 5" (5 m)		
Passage 420	43' 0" (13.23 m)	13' 0" (4.22 m)	16' 5" (5 m)		

# SPECIFICATIONS

---

**LOA:**

33' 0" (10.21 m)

**Beam:**

11' 0" (3.50 m)

**Cruise Speed:**

5.34 kn / 6.14 mph

**Gross Tonnage:**

5 Pounds

**Fuel Capacity:**

25 Gallons

**Sleeps:**

4

**Hull Material:**

Fiberglass and Plastic Yachts

**Hull Configuration:**

Monohull

**Interior Designer:**

Luiz de Basto

**Engines:**

1

**Engine Type:**

Inboard

**Min Draft:**

14' 9" (4.50 m)

**Max Draft:**

18' 1" (5.50 m)

**Max Speed:**

10 kn / 11.51 mph

**Water Capacity:**

50 Gallons

**Total Heads:**

1

**Deck Material:**

Fiberglass

**Hull Designer:**

Glenn Henderson

**Manufacturer:**

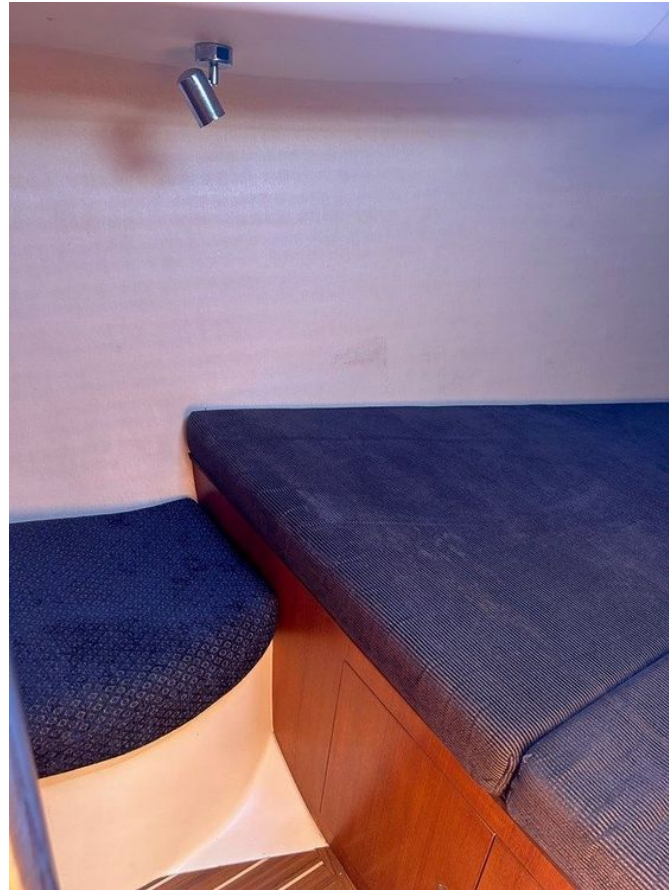
Yanmar

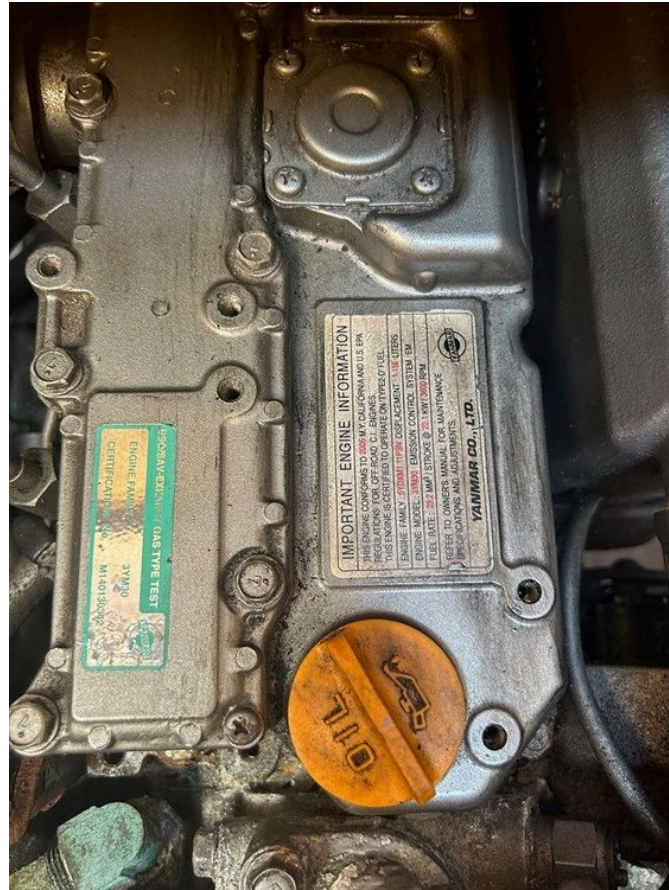
**Fuel Type:**

Diesel

# GALLERY











# CONTACTS

---

Shestakov Yacht Sales is a brokerage company specializing in the sale and service of yachts worldwide. The company offers services for buying and selling both new and used motor yachts, sailing vessels, and luxury superyachts. They also provide yacht registration, insurance, technical maintenance, crew selection, and charter organization services across the U.S., Canada, Latin America, the Caribbean, and the Bahamas.

The founder and lead broker of the company is Andrey Shestakov, a licensed and certified expert with extensive experience in marine engineering and shipbuilding.

The company has an extensive network of partnerships with major yacht manufacturers worldwide and provides services in multiple languages, including Russian, Ukrainian, Spanish, and English. The office is in Dania Beach, Florida, USA.

For more information and to view available yachts, you can visit the company's official website: <https://shestakovyachtsales.com>

## Contact details

---

**Phone:** +1(954)274-4435

**Email:** [andrey@shestakovyachtsales.com](mailto:andrey@shestakovyachtsales.com)

## Address

---



1380 Weeping Willow Way, Hollywood,  
Florida 33019