



SHESTAKOV

Yacht Sales

EXPLORER 105 - INACE



Builder:

INACE

Model:

Explorer 105

LOA:

105' 0" (32.28 m)

Min Draft:

25' 2" (7.67 m)

Beam:

23' 0" (7.14 m)

Cruise Speed:

10 kn / 11.51 mph

Max Speed:

13 kn / 14.96 mph

Gross Tonnage:

230 Pounds

Water Capacity:

2588.89 Gallons

Fuel Capacity:

17131.56 Gallons

Sleeps:

5

Total Heads:

4

If you would like to buy a yacht **EXPLORER 105 - INACE** or would like help, please call +1(954)274-4435 or visit shestakovyachtsales.com

TABLE OF CONTENTS

OVERVIEW	3
Selecting a Explorer 105	3
Features of the Model	3
Technical Specifications	4
Pricing and Ordering	4
Questions and Answers	4
Owner Experience Review	5
Pros and Cons	6
Comparison with Other Models	7
SPECIFICATIONS	8
GALLERY	9
CONTACTS	14

OVERVIEW

Built by INACE, the Explorer 105 is a purpose-built motor yacht with a genuine expedition focus and a sturdy steel build. Offered through Andrey Shestakov and Shestakov Yacht Sales, it combines dependable seagoing capability with practical internal volume for extended cruising.

Selecting a Explorer 105

Opting for the Explorer 105 emphasizes long-range cruising, fuel efficiency, and onboard safety. As an expedition yacht constructed on a steel platform, it delivers reassuring structural integrity, a steady 10-knot cruising regime, and extensive capacity for supplies and fuel suitable for extended voyages. Andrey Shestakov and the Shestakov Yacht Sales team will guide you in matching this motor yacht to your itinerary—whether that includes transoceanic passages or self-sufficient season-long exploration.

Features of the Model

- Twin Volvo Penta inboard diesel installations provide reliable propulsion and serviceability.
- Comfortable passagemaking with a designed cruising speed of 10 kn and a top speed near 13 kn.
- Considerable internal volume at 230 gross tons delivers ample stowage and liveaboard space.
- Robust construction with a steel hull and steel deck for enhanced durability in demanding conditions.
- Hull and interior styling developed by Inace.
- Accommodation layout: 8 count; Sleeps: 5; Heads: 4, enabling flexible living and guest arrangements.

- Substantial tankage: 17,131.56 gal fuel capacity and 2,588.89 gal water capacity for prolonged autonomy.

Technical Specifications

- Model and builder: Explorer 105 by INACE
- Type: motor yacht; Class: expedition yacht
- Hull: steel; Deck material: Steel
- LOA: 105 ft (32.28 m)
- Beam: 23 ft (7.14 m)
- Draft (min): 25.153 ft (7.6666 m)
- Gross tonnage: 230
- Engines: 2 x Volvo Penta; Type: Inboard; Fuel: Diesel
- Cruising speed: 10 kn (11.51 mph)
- Maximum speed: 13 kn (14.96 mph)
- Accommodation count: 8; Sleeps: 5; Heads: 4
- Fuel capacity: 17,131.56 gal
- Water capacity: 2,588.89 gal
- Hull designer: Inace; Interior designer: Inace

Pricing and Ordering

For up-to-date pricing, build availability, and commissioning details on the Explorer 105, contact Andrey Shestakov at Shestakov Yacht Sales. Our brokerage will coordinate specifications, production timelines, and arrange survey and sea-trial logistics directly with INACE.

Questions and Answers

- What type of yacht is the Explorer 105? The Explorer 105 is classed as a motor

yacht within the expedition segment, built upon a steel construction foundation.

- What are the key details of the **engines** and **speed** ? Propulsion is provided by 2 x Volvo Penta **inboard diesel** engines, delivering a cruising **speed** of 10 kn (11.51 mph) and a maximum **speed** of 13 kn (14.96 mph).
- How many **people** can stay aboard and how many **heads** are there? The yacht lists an accommodation count of 8 with **sleeps** for 5 and 4 **heads** , providing adaptable sleeping and living arrangements for owners and crew.
- What are the primary **materials** and who handled the **design** ? The hull and deck are constructed of steel; both hull and interior **design** work were completed by Inace.
- How do I **purchase** or arrange an **inspection** ? Contact Andrey Shestakov at Shestakov Yacht Sales to discuss purchase procedures, inspections, and delivery logistics for the Explorer 105. Our team will coordinate directly with INACE.

Owner Experience Review

Owners are drawn to the Explorer 105 from INACE for its authentic long-range capability and steady, predictable behavior offshore. Listings for the sistership Victoria indicate roughly 4,500 nm range at a 10-knot cruise, and the model family operates as a displacement platform with an economical 10 knot cruise and an approximate 13 knot top speed. Feedback on sister Inace Explorers highlights tank-validated hull forms and a seakindly motion confirmed over extensive ocean passages, including trans-ocean runs.

Onboard living tends more toward the feel of a compact ship than a conventional 100 footer. Owners report a sense of “the room and feel of a much larger vessel,” with layouts frequently featuring 3–4 cabins including an owner’s suite and multiple guest staterooms, alongside separate crew accommodations. Multiple communal areas—salon, skylounge, and

flybridge—support family cruising and full-time liveaboard use, and convertible skylounge berths offer additional guest capacity. Large fuel and water tanks coupled with residential-style amenities underline the yacht's capacity for extended self-reliant cruising.

Typical ownership models are private and often owner-operated with a small professional crew. Machinery installations are generally commercial-grade—examples within the Explorer class include twin Volvo Penta TAMD 165A or comparable heavy-duty diesels—and documented refits on sister hulls have encompassed new generator installations and major engine overhauls. Systems are usually arranged for onboard servicing, but maintenance demands align with steel/aluminium expedition yachts, so prospective buyers budget accordingly for ongoing upkeep.

Pros and Cons

- True long-range autonomy, with a sister Explorer 105 (Victoria) advertised at approximately 4,500 nm at 10 knots.
- Sea-kindly, efficient displacement ride thanks to tank-tested hull forms and proven trans-ocean performance on related vessels.
- Generous interior volume that delivers the room and ambience of a larger yacht, with adaptable 3–4 cabin configurations plus skylounge berths and defined crew areas.
- Limited top-end speed (around a 10-knot cruise and ~13-knot maximum) may disappoint buyers seeking rapid transfers.
- Steel/aluminium expedition construction and commercial-grade systems mean higher routine service and lifecycle costs.
- Older hulls can require significant mechanical work during refits, with sister vessels documented as needing generator replacements or comprehensive engine overhauls.

Comparison with Other Models

Model	LOA	Beam	Draft	Speed (Cruising/Max)	Gross Tonnage
Explorer 105	105' 0" (32.28 m)	23' 0" (7.14 m)	25' 2" (7.67 m)	10 kn / 13 kn	230
Explorer	126' 0" (38.40 m)	26' 0" (7.92 m)	24' 1" (7.33 m) – 26' 3" (8 m)	11 kn / 13 kn	
Explora 131	131' 0" (39.93 m)	27' 0" (8.36 m)	23' 9" (7.25 m)	10 kn / 12 kn	350
Aventura 130	130' 0" (39.62 m)	27' 0" (8.50 m)	22' 12" (7 m) – 26' 3" (8 m)	10 kn / 12 kn	460
FHI 90	90' 0" (27.41 m)			10 kn / 13 kn	230
Explora 135	134' 0" (40.87 m)	27' 0" (8.23 m)	27' 1" (8.25 m)	10 kn / 14 kn	390
Explora 145	145' 0" (44.20 m)	30' 0" (9.14 m)	22' 12" (7 m)	10 kn / 12 kn	499
Explora 90	90' 0" (27.43 m)	23' 0" (7.01 m)	21' 4" (6.50 m) – 22' 12" (7 m)	10 kn / 13 kn	138
Aventura 164	164' 0" (49.99 m)	30' 0" (9.20 m)	21' 4" (6.50 m) – 23' 7" (7.20 m)	11 kn / 13 kn	498
INACE EXPLORER 80	78' 0" (23.90 m)		6' 11" (2.10 m)		

SPECIFICATIONS

LOA:

105' 0" (32.28 m)

Beam:

23' 0" (7.14 m)

Cruise Speed:

10 kn / 11.51 mph

Gross Tonnage:

230 Pounds

Fuel Capacity:

17131.56 Gallons

Sleeps:

5

Hull Material:

Steel Yachts

Hull Designer:

Inace

Engines:

2

Engine Type:

Inboard

Min Draft:

25' 2" (7.67 m)

Max Speed:

13 kn / 14.96 mph

Water Capacity:

2588.89 Gallons

Total Heads:

4

Deck Material:

Steel

Interior Designer:

Inace

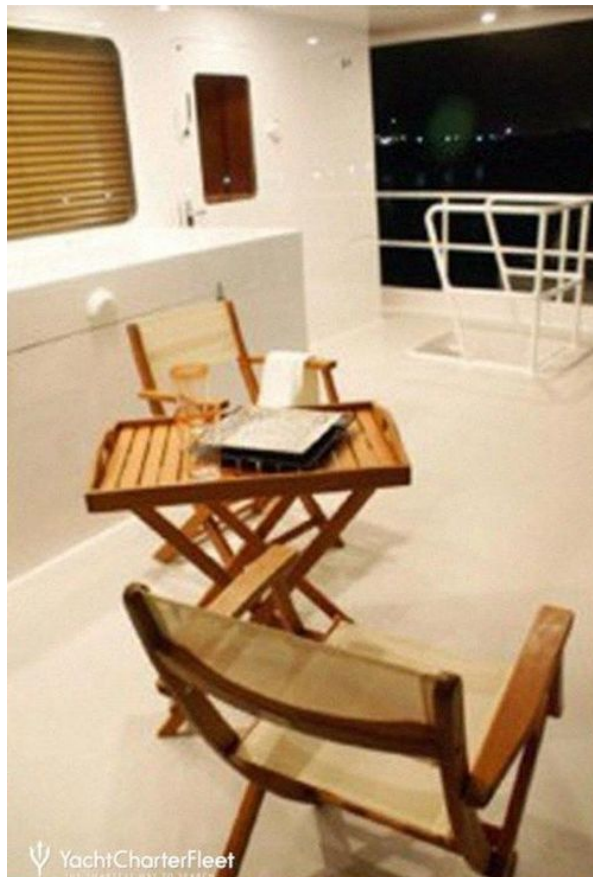
Manufacturer:


Volvo Penta

Fuel Type:

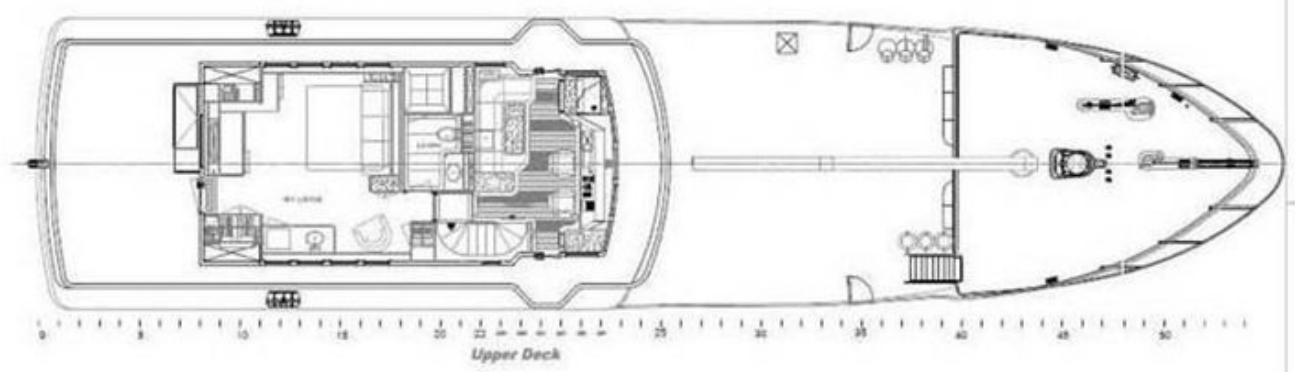
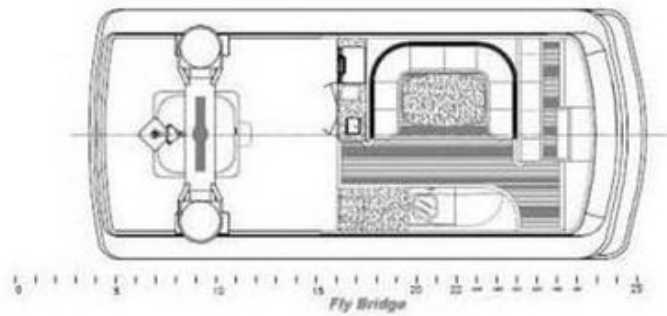
Diesel

GALLERY



 YachtCharterFleet
THE EASIEST WAY TO CHARTER









CONTACTS

Shestakov Yacht Sales is a brokerage company specializing in the sale and service of yachts worldwide. The company offers services for buying and selling both new and used motor yachts, sailing vessels, and luxury superyachts. They also provide yacht registration, insurance, technical maintenance, crew selection, and charter organization services across the U.S., Canada, Latin America, the Caribbean, and the Bahamas.

The founder and lead broker of the company is Andrey Shestakov, a licensed and certified expert with extensive experience in marine engineering and shipbuilding.

The company has an extensive network of partnerships with major yacht manufacturers worldwide and provides services in multiple languages, including Russian, Ukrainian, Spanish, and English. The office is in Dania Beach, Florida, USA.

For more information and to view available yachts, you can visit the company's official website: <https://shestakovyachtsales.com>

Contact details

Phone: +1(954)274-4435

Email: andrey@shestakovyachtsales.com

Address



1380 Weeping Willow Way, Hollywood,
Florida 33019