



SHESTAKOV

Yacht Sales

ISA 500 – ISA YACHTS



Builder:

ISA YACHTS

Model:

ISA 500

LOA:

164' 0" (50 m)

Beam:

29' 0" (9 m)

Max Draft:

8' 4" (2.55 m)

Cruise Speed:

12 kn / 13.81 mph

Max Speed:

17 kn / 19.56 mph

Gross Tonnage:

495 Pounds

Water Capacity:

3962.58 Gallons

Fuel Capacity:

22982.97 Gallons

Hull Material:

Steel Yachts

Deck Material:

Steel

If you would like to buy a yacht **ISA 500 – ISA YACHTS** or would like help, please call +1(954)274-4435 or visit shestakovyachtsales.com

TABLE OF CONTENTS

| | |
|---|-----------|
| OVERVIEW | 3 |
| Selecting a ISA 500 | 3 |
| Features of the Model | 3 |
| Technical Specifications | 4 |
| Pricing and Ordering | 4 |
| Questions and Answers | 5 |
| Owner Experience Review | 5 |
| Pros and Cons | 6 |
| Comparison with Other Models | 7 |
| SPECIFICATIONS | 8 |
| GALLERY | 9 |
| CONTACTS | 14 |

OVERVIEW

Shestakov Yacht Sales introduces the ISA 500, a motor yacht from ISA YACHTS in the mega yacht class built on a steel hull classification. Measuring 164 ft (50 m), it offers a generous internal volume married to efficient seakeeping and interiors by Rene Van Der Velden. For personalized assistance, reach out to Andrey Shestakov and the team at Shestakov Yacht Sales.

Selecting a ISA 500

When you want a 50 m platform that blends a classic motor yacht profile with genuine mega yacht scale and the reliability of steel construction, the ISA 500 merits careful evaluation. Configured with twin MTU diesels, sleeping arrangements for 13 guests, and cruise/max speeds of 12/17 knots, Andrey Shestakov at Shestakov Yacht Sales can advise on suitability, build or purchase timelines, and comparable market options.

Features of the Model

- Dimensions and internal volume tailored for extended voyaging: 164 ft (50 m) LOA, 29 ft (9 m) beam, 8.366 ft (2.55 m) maximum draft; 495 GT.
- Twin MTU diesel propulsion (2 engines) delivering an operational speed range: 12 kn cruise (13.81 mph) and 17 kn top speed (19.56 mph).
- Heavy duty steel yacht build with Steel decks for longevity and onboard comfort whether underway or at anchor.
- Interior architecture by Rene Van Der Velden, combining intelligent space planning with refined finishes.
- Guest capacity for up to 13 people, allowing flexible layouts for family or charter operations.
- Large tank capacities: approximately 22,982.97 gal fuel and 3,962.58 gal fresh

water.

Technical Specifications

- Builder: ISA YACHTS
- Model: ISA 500
- Type: motor yacht / mega yacht
- Hull: steel construction
- Deck material: Steel
- LOA: 164 ft (50 m)
- Beam: 29 ft (9 m)
- Max draft: 8.366 ft (2.55 m)
- Gross tonnage: 495 GT
- Engines: 2 × MTU
- Fuel type: Diesel
- Speed (cruise): 12 kn (13.81 mph)
- Speed (max): 17 kn (19.56 mph)
- Accommodation: up to 13 guests
- Fuel capacity: 22,982.97 gal
- Fresh water capacity: 3,962.58 gal
- Interior designer: Rene Van Der Velden

Pricing and Ordering

To obtain up-to-date pricing, delivery timelines, and purchasing advice for the ISA 500—including assistance with specifications, surveys, and transactional planning—contact Andrey Shestakov at Shestakov Yacht Sales. Our brokerage will arrange inspections, oversee technical due diligence, and negotiate with ISA YACHTS on your behalf.

Questions and Answers

Q: What type of yacht is the ISA 500? A: It's a **motor yacht** positioned in the **mega yacht segment** and built to a **steel hull classification**

Q: Who builds the ISA 500? A: The vessel is constructed by **ISA YACHTS** with interiors crafted by **Rene Van Der Velden** .

Q: How many guests can it accommodate? A: The interior arrangement supports **accommodation for up to 13 guests** , providing adaptable layouts for family or charter use.

Q: What are the performance figures? A: Anticipate a **cruising speed of 12 knots (13.81 mph)** and a **maximum speed of 17 knots (19.56 mph)** , driven by twin MTU diesel engines.

Q: What are the key dimensions and capacities? A: LOA **164 ft (50 m)** , beam **29 ft (9 m)** , max draft **8.366 ft (2.55 m)** , **495 GT** , fuel **22,982.97 gal** , and freshwater **3,962.58 gal** . For full specifics, contact **Andrey Shestakov** at **Shestakov Yacht Sales** .

Owner Experience Review

Buyers are drawn to the ISA 500 from ISA YACHTS for its suitability to family cruising and hybrid private/charter roles. The full beam owner's suite on the main deck—often promoted as a “family first” feature on Papi du Papi—anchors a three deck arrangement that emphasizes spacious volume. A capacious beach club, transom access, and an on deck garage for tenders and waverunners simplify weekend waterplay, while sundeck elements such as a Jacuzzi, bar, and broad dining and sun areas support both private enjoyment and charter appeal. Interiors are typically owner specified, featuring quality joinery and designer-led schemes throughout.

At sea, the steel displacement hull is frequently praised for a gentle, seakindly motion that pairs long range economy with reassuring ride characteristics. Both zero speed and underway stabilizers (Quantum or NAIAD on different hulls) improve comfort at anchor and underway. Typical cruising speeds cited fall between 11–14 knots, with economical passages often at about 11 knots and reported top speeds near 16–17 knots depending on propulsion choices—fulfilling the brief of a sporty appearance combined with substantial volume.

For extended passages, owners reference expedition-capable ranges—roughly 4,400 nm at about 11 knots, or in the order of 2,200–2,300 nm at around 14 knots—though actual range varies by hull and outfitting. Ownership histories also underline the scale and complexity of onboard systems: multiple refits appear in brokerage records, stabilizer refurbishments are common in service logs, and engine configurations differ between hulls (some with CAT 3512C, others with MTU 12V 4000), which affects maintenance planning and spare parts strategies. Generous engineer spaces and well planned machinery access help to make servicing these systems more manageable.

Pros and Cons

- Voluminous steel displacement platform provides efficient long range capability and a smooth, sea kindly motion augmented by stabilizers.
- Main deck owner's suite with a family forward layout and commonly six cabins for 12 guests accommodates private ownership and charter needs.
- Beach club, on deck garage, and sundeck Jacuzzi/bar facilitate easy handling of water toys and enhance outdoor guest experiences.
- Not designed for high speeds; normal cruising is in the 11–14 knot range with maximums around 16–17 knots depending on propulsion.
- Sophisticated systems and stabilizers require regular maintenance, with rebuilds and overhauls appearing in brokerage service histories.

- Different engine packages across hulls (CAT vs MTU) create distinct service intervals and spare parts requirements.

Comparison with Other Models

| Model | LOA | Beam | Draft | Speed (Cruising/Max) | Gross Tonnage |
|--------------|-------------------|------------------|------------------|----------------------|---------------|
| SPORTIVA 66M | 217' 0" (66.40 m) | 36' 0" (11 m) | 10' 10" (3.30 m) | 16 kn / 18.5 kn | 1200 |
| 500 | 163' 0" (49.95 m) | 29' 0" (9 m) | 10' 6" (3.20 m) | 11.5 kn / 16.2 kn | 498 |
| ISA 500 | 164' 0" (50 m) | 29' 0" (9 m) | 8' 4" (2.55 m) | 12 kn / 17 kn | 495 |
| ISA 470 | 155' 0" (47.50 m) | 29' 0" (8.90 m) | 8' 4" (2.55 m) | 14.5 kn / 16.8 kn | 498 |
| N/A | 262' 0" (80 m) | 42' 0" (12.80 m) | 11' 12" (3.65 m) | 14 kn / 17 kn | 2220 |

SPECIFICATIONS

LOA:

164' 0" (50 m)

Max Draft:

8' 4" (2.55 m)

Cruise Speed:

12 kn / 13.81 mph

Gross Tonnage:

495 Pounds

Fuel Capacity:

22982.97 Gallons

Hull Material:

Steel Yachts

Interior Designer:

Rene Van Der Velden

Engines:

2

Fuel Type:

Diesel

Beam:

29' 0" (9 m)

Max Speed:

17 kn / 19.56 mph

Water Capacity:

3962.58 Gallons

Deck Material:

Steel

Manufacturer:

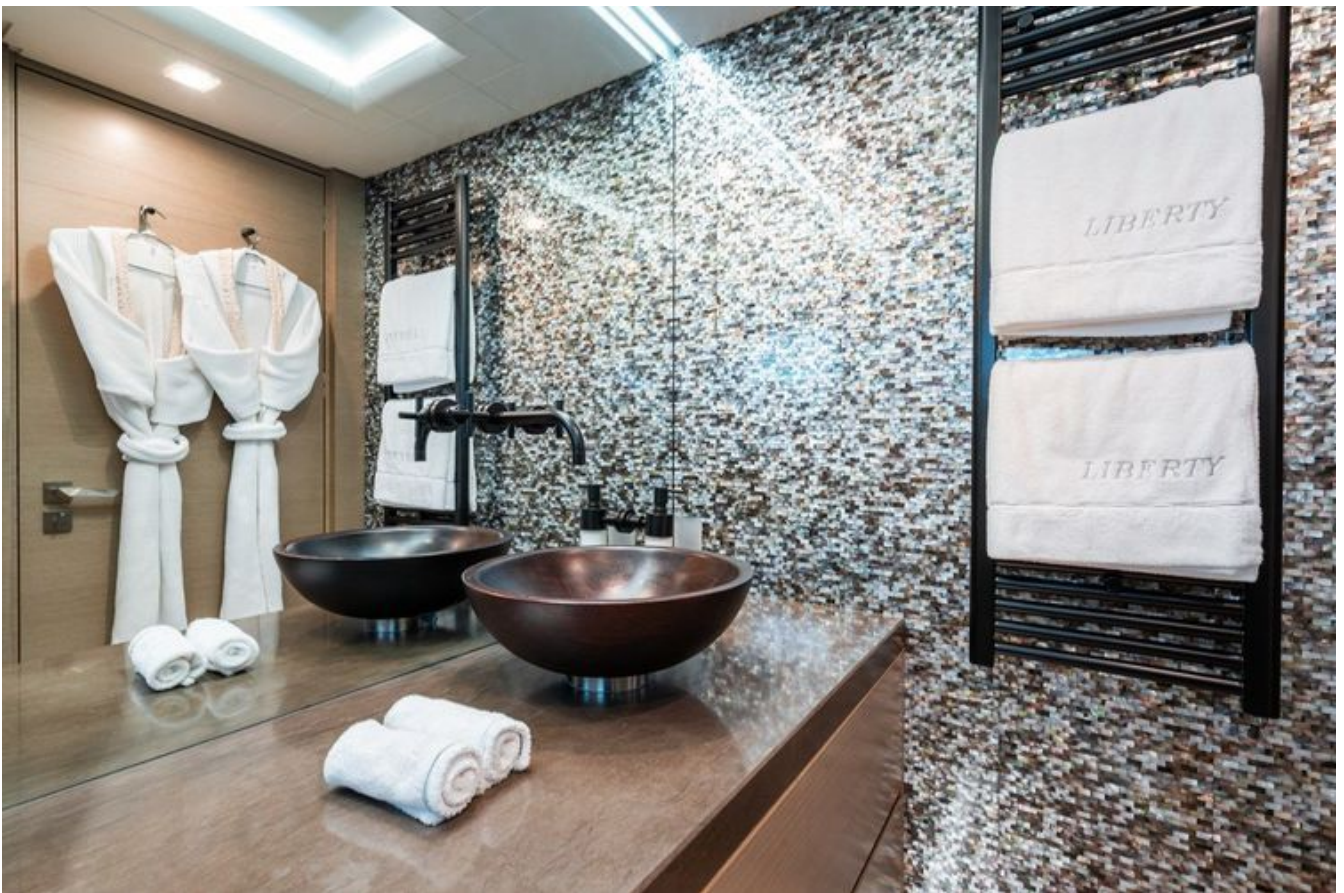
MTU

GALLERY











CONTACTS

Shestakov Yacht Sales is a brokerage company specializing in the sale and service of yachts worldwide. The company offers services for buying and selling both new and used motor yachts, sailing vessels, and luxury superyachts. They also provide yacht registration, insurance, technical maintenance, crew selection, and charter organization services across the U.S., Canada, Latin America, the Caribbean, and the Bahamas.

The founder and lead broker of the company is Andrey Shestakov, a licensed and certified expert with extensive experience in marine engineering and shipbuilding.

The company has an extensive network of partnerships with major yacht manufacturers worldwide and provides services in multiple languages, including Russian, Ukrainian, Spanish, and English. The office is in Dania Beach, Florida, USA.

For more information and to view available yachts, you can visit the company's official website: <https://shestakovyachtsales.com>

Contact details

Phone: +1(954)274-4435

Email: andrey@shestakovyachtsales.com

Address



1380 Weeping Willow Way, Hollywood,
Florida 33019