



SHESTAKOV

Yacht Sales

DELFINO - JACHTBOUW DE ALM



Builder:

JACHTBOUW DE ALM

Model:

Delfino

LOA:

64' 0" (19.51 m)

Beam:

18' 0" (5.74 m)

Max Draft:

19' 11" (6.08 m)

Water Capacity:

396 Gallons

Fuel Capacity:

2773 Gallons

Total Heads:

3

Crew Cabin:

1

Hull Material:

Steel Yachts

Deck Material:

Steel

Engines:

1

If you would like to buy a yacht **DELFINO - JACHTBOUW DE ALM** or would like help, please call +1(954)274-4435 or visit shestakovyachtsales.com

TABLE OF CONTENTS

OVERVIEW	3
Selecting a Delfino	3
Features of the Model	3
Technical Specifications	4
Pricing and Ordering	4
Questions and Answers	5
Owner Experience Review	5
Pros and Cons	6
Comparison with Other Models	7
SPECIFICATIONS	8
GALLERY	9
CONTACTS	14

OVERVIEW

Presented by Andrey Shestakov and Shestakov Yacht Sales, the Delfino from JACHTBOUW DE ALM is a purpose-built motor yacht shaped by true trawler principles. Constructed on a sturdy steel hull with steel decks, this 64 ft (19.51 m) platform offers an 18 ft (5.74 m) beam and a deep 19.958 ft (6.0833 m) draft. Its single John Deere inboard diesel simplifies propulsion, while generous tankage—2,773 gallons fuel and 396 gallons water—combined with 3 heads and a dedicated crew cabin make it well suited to long-distance cruising.

Selecting a Delfino

If your priorities include the efficiency of a single-engine layout, the durability of steel construction, and the extended-range temperament of a classic trawler, the Delfino is an appealing option. Its substantial dimensions, solid steel hull, and large fuel and water capacities are tailored for lengthy passages, while the presence of 3 heads and a crew cabin provides practical liveaboard comforts. Contact Andrey Shestakov at Shestakov Yacht Sales to match the Delfino to your intended cruising profile.

Features of the Model

- Purpose-built motor yacht reflecting authentic trawler design for offshore and long-distance voyaging
- Heavy-duty steel hull with steel decks to maximize longevity and impact resistance
- Single-engine drivetrain: 1 x John Deere, Inboard, Diesel for uncomplicated operation and maintenance
- Large capacity tanks—2,773 gal fuel and 396 gal water—designed to minimize time alongside

- Practical onboard layout including 3 heads and a separate crew cabin
- Balanced dimensions: 64 ft LOA, 18 ft beam, 19.958 ft draft for a stable, seagoing platform
- Available through Andrey Shestakov and Shestakov Yacht Sales for professional representation

Technical Specifications

- Model: Delfino
- Builder: JACHTBOUW DE ALM
- Type: motor yacht / trawler
- Hull: steel hull; Deck: Steel
- LOA: 64 ft (19.51 m)
- Beam: 18 ft (5.74 m)
- Max Draft: 19.958 ft (6.0833 m)
- Engines: 1 x John Deere; Type: Inboard; Fuel: Diesel
- Fuel Capacity: 2,773 gal
- Water Capacity: 396 gal
- Heads: 3
- Crew Cabins: 1

Pricing and Ordering

For up-to-date pricing, current availability, and tailored purchase guidance on the Delfino, please reach out to Andrey Shestakov at Shestakov Yacht Sales. Our brokerage team will assist you through model selection, specification review, pre-purchase surveys, and delivery logistics to ensure a seamless acquisition.

Questions and Answers

Q: What is the Delfino's yacht type? A: The Delfino produced by JACHTBOUW DE ALM is a motor yacht conceived and built as a bona fide trawler on a steel hull. The emphasis is on **yacht type** , extended **range** , and sturdy **construction** .

Q: What are the key dimensions? A: The vessel measures 64 ft (19.51 m) LOA, has an 18 ft (5.74 m) beam, and a maximum draft of 19.958 ft (6.0833 m).

Q: What powers the Delfino and what fuel does it use? A: Propulsion is provided by a **single** John Deere **Inboard** engine running on **Diesel** , chosen for its simplicity and dependable economy.

Q: What are the tank capacities? A: The Delfino carries **2,773 gallons** of fuel and **396 gallons** of fresh water, enabling extended periods away from port.

Q: How is accommodation arranged for amenities and crew? A: Accommodation includes **3 heads** and **1 crew cabin** , supporting comfortable liveaboard or professional crew operation. For viewings and purchase information, contact Andrey Shestakov at Shestakov Yacht Sales.

Owner Experience Review

Owners who favor the Delfino from JACHTBOUW DE ALM typically deploy her for long-range passagemaking, owner-operated cruising, or full-time liveaboard lifestyles. Listings and owner narratives frequently draw attention to raised pilothouse configurations, abundant tankage, and outfitting that supports extended time at sea. Accommodation plans often feature a full-beam master, two to four guest cabins, and a roomy wheelhouse/pilothouse laid out for comfortable watchkeeping.

On the water, the Delfino is commonly reported as a steady,

displacement-style trawler with a seaworthy motion and predictable handling. Owners and brokers regularly cite fin stabilizers and high freeboard as contributors to reduced roll and enhanced onboard comfort. Typical cruising speeds are noted around 8–10 knots for economical passages, with top-end speeds near 12 knots on 65–70 ft iterations.

Maintenance discussion centers on the steel multi-chine hull: while the construction is robust (some examples reference 8 mm underwater plating), ongoing steel maintenance—corrosion inspections, plating attention, and regular antifouling—remains essential. Listings also underline owner-friendly, service-oriented engine rooms; common diesel engine choices include John Deere and Caterpillar/Perkins, with routine servicing recommended for engines, gearboxes, and shaft seals. Several pre-owned vessels are offered with documented care histories, though buyers should confirm records as part of a formal survey.

Pros and Cons

- Economical displacement cruise in the 8–10 knot band with true long range capability; larger examples are reported with ~10,500 L fuel and roughly ~3,000 nm range.
- Seaworthy, consistent handling; many examples are fitted with fin stabilizers and benefit from high freeboard that lowers roll.
- Liveboard-friendly raised pilothouse, comfortable wheelhouse seating, full beam master and 2–4 guest cabins in typical layouts.
- Steel hull demands routine corrosion control, plating inspections, and attention to antifouling.
- Modest maximum speed (around 12 knots on 65–70 ft versions) compared with performance-oriented cruisers.
- Fit-out and equipment vary between boats; confirm stabilizer installations, exact engine specifications, and any “documented maintenance” claims during

survey.

Comparison with Other Models

Model	LOA	Beam	Draft	Speed (Cruising/Max)	Gross Tonnage
Delfino	64' 0" (19.51 m)	18' 0" (5.74 m)	19' 11" (6.08 m)		

SPECIFICATIONS

LOA:

64' 0" (19.51 m)

Max Draft:

19' 11" (6.08 m)

Water Capacity:

396 Gallons

Total Heads:

3

Hull Material:

Steel Yachts

Engines:

1

Engine Type:

Inboard

Beam:

18' 0" (5.74 m)

Fuel Capacity:

2773 Gallons

Crew Cabin:

1

Deck Material:

Steel

Manufacturer:

John Deere

Fuel Type:

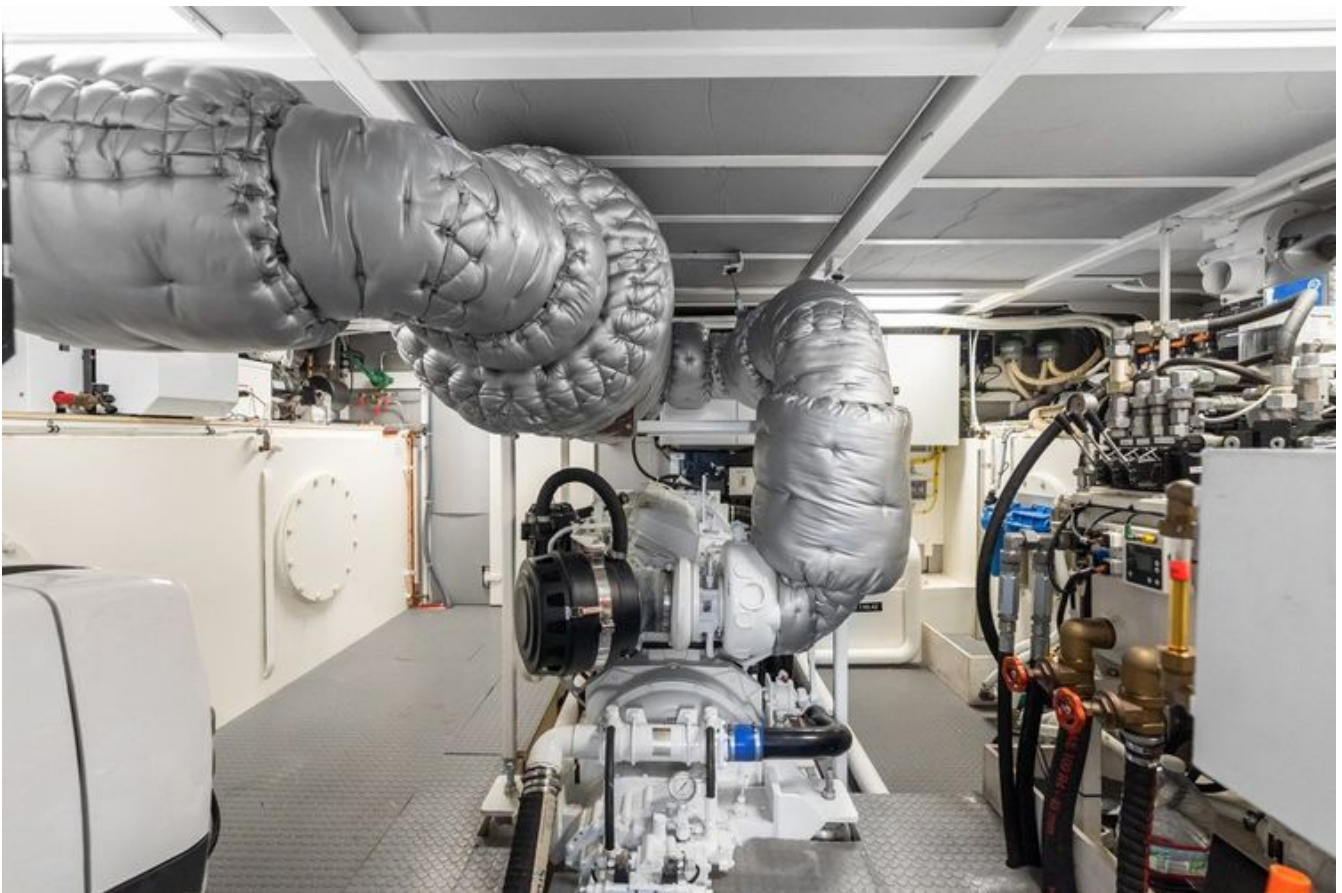
Diesel

GALLERY











CONTACTS

Shestakov Yacht Sales is a brokerage company specializing in the sale and service of yachts worldwide. The company offers services for buying and selling both new and used motor yachts, sailing vessels, and luxury superyachts. They also provide yacht registration, insurance, technical maintenance, crew selection, and charter organization services across the U.S., Canada, Latin America, the Caribbean, and the Bahamas.

The founder and lead broker of the company is Andrey Shestakov, a licensed and certified expert with extensive experience in marine engineering and shipbuilding.

The company has an extensive network of partnerships with major yacht manufacturers worldwide and provides services in multiple languages, including Russian, Ukrainian, Spanish, and English. The office is in Dania Beach, Florida, USA.

For more information and to view available yachts, you can visit the company's official website: <https://shestakovyachtsales.com>

Contact details

Phone: +1(954)274-4435

Email: andrey@shestakovyachtsales.com

Address



1380 Weeping Willow Way, Hollywood,
Florida 33019