



SHESTAKOV

Yacht Sales

52 - KADEY-KROGEN



Builder:

Kadey-Krogen

Model:

52

LOA:

52' 0" (15.85 m)

Max Draft:

14' 9" (4.50 m)

Total Heads:

2

Hull Material:

Fiberglass and Plastic Yachts

Deck Material:

Fiberglass

Engines:

2

Manufacturer:

John Deere

Engine Type:

Inboard

Fuel Type:

Diesel

If you would like to buy a yacht **52 - Kadey-Krogen** or would like help, please call +1(954)274-4435 or visit shestakovyachtsales.com

TABLE OF CONTENTS

OVERVIEW	3
Selecting a 52	3
Features of the Model	3
Technical Specifications	4
Pricing and Ordering	4
Questions and Answers	4
Owner Experience Review	5
Pros and Cons	6
Comparison with Other Models	6
SPECIFICATIONS	7
GALLERY	8
CONTACTS	13

OVERVIEW

The 52 from Kadey-Krogen is a sturdy, purpose-built trawler motor yacht constructed with a fiberglass-and-plastic hull, driven by twin John Deere inboard diesels, and laid out for practical cruising with 2 heads. For guidance on whether this model matches your plans and for assistance with acquisition, contact Shestakov Yacht Sales and broker Andrey Shestakov.

Selecting a 52

If your search centers on a trawler-style motor yacht in the 52-foot range, the 52 combines reliable inboard diesel propulsion with a proven fiberglass-and-plastic hull. With a LOA of 52 ft (15.85 m) and a maximum draft listed at 14.764 ft (4.5 m), it appeals to owners who prioritize dependable twin John Deere powerplants and the functional, purpose-driven layout that defines a trawler within the motor yacht category.

Features of the Model

- Type: a trawler motor yacht
- LOA: 52 ft (15.85 m)
- Maximum draft: 14.764 ft (4.5 m)
- Propulsion: twin John Deere, Inboard, Diesel
- Hull: fiberglass-and-plastic construction
- Deck material: Fiberglass
- Heads: 2

Technical Specifications

- LOA: 52 ft / 15.85 m
- Draft (max): 14.764 ft / 4.5 m
- Engines: 2 x John Deere
- Engine type: Inboard
- Fuel: Diesel
- Hull: fiberglass-and-plastic hull
- Deck material: Fiberglass
- Heads: 2

Pricing and Ordering

To obtain up-to-date pricing, check availability, or get step-by-step purchasing assistance for the 52 by Kadey-Krogen, please reach out to Andrey Shestakov at Shestakov Yacht Sales. Our brokerage team will help arrange specification reviews, surveys, and the next steps toward owning this model.

Questions and Answers

Q: What is the exact yacht type of the 52? A: It is a trawler that sits within the broader motor yacht class, built upon a fiberglass-and-plastic hull.

Q: What are the principal dimensions and draft? A: The **LOA** measures 52 ft (15.85 m), and the **maximum draft** is 14.764 ft (4.5 m).

Q: What engines power the model? A: The yacht is propelled by **twin John Deere Inboard Diesel** engines, chosen for dependable cruising performance.

Q: What are the hull and deck materials? A: The **hull** uses fiberglass-and-plastic construction, while the **deck** is finished in **Fiberglass** .

Q: How many heads are on board? A: The 52 is fitted with **2 heads**, arranged to support comfortable cruising and liveaboard use.

Owner Experience Review

Owners who spend time aboard a 52 from Kadey-Krogen commonly refer to it as a capable “second home” trawler. The model’s flexible interior plans (offered in two- or three stateroom configurations), full size galley appliances, and an array of social spaces—the covered aft deck, the pilothouse settee/watch berth, and the flybridge—make it well suited for full time liveaboard use or family weekends. It is often configured to be managed by two people, a feature that complements Great Loop passages and extended coastal cruising.

Underway, owners and reviewers describe the 52 as delivering a “harmonious blend of efficiency, comfort, and sea keeping ability.” Feedback highlights a steady motion in a seaway, good tracking, and a capacity to absorb wakes, with the yacht feeling most at home at displacement cruise speeds of about 7–9 knots. Published figures indicate an approximate 3,300 nm range at 7 knots for bluewater passagemaking, and forum contributors add, “I am a fan... and believe in their sea keeping capabilities.”

Everyday maintenance benefits from a stand up, walk in engine room that provides straightforward access to strainers, separators, and the genset. Typical systems are comprehensive—commonly including a genset, stabilizers, fuel polishing equipment, and John Deere propulsion—but owners and surveyors note that routine upkeep costs are higher than for smaller recreational craft; conversely, long ownership cycles and limited turnover indicate durable systems. These impressions come from owner commentary and published reviews; actual equipment and arrangements vary by hull.

Pros and Cons

- Very steady in a seaway; tracks well and soaks up wakes, with comfortable displacement cruising around 7–9 knots.
- Liveaboard ready interior with household size appliances, two or three stateroom layouts, and multiple social areas.
- Service friendly, stand up engine room with clear access to routine service points.
- Routine service costs are higher than on small recreational boats.
- Optimized for displacement speeds (~7–9 knots), which won't suit buyers seeking fast planing performance.
- Systems rich setup (genset, stabilizers, fuel polishing, John Deere engines) adds maintenance planning and upkeep.

Comparison with Other Models

Model	LOA	Beam	Draft	Speed (Cruising/Max)	Gross Tonnage
Krogen 54	54' 0" (16.46 m)	17' 0" (5.18 m)	18' 1" (5.50 m)	8.4 kn / 9.5 kn	
58 Extended Bridge	58' 0" (17.68 m)	18' 0" (5.74 m)	17' 3" (5.25 m)	9 kn / 10 kn	
52	52' 0" (15.85 m)		14' 9" (4.50 m)		
42 Trawler	42' 0" (12.80 m)	15' 0" (4.57 m)	14' 9" (4.50 m)		
N/A	42' 0" (12.80 m)				

SPECIFICATIONS

LOA:

52' 0" (15.85 m)

Total Heads:

2

Hull Material:

Fiberglass and Plastic Yachts

Engines:

2

Engine Type:

Inboard

Max Draft:

14' 9" (4.50 m)

Deck Material:

Fiberglass

Manufacturer:

John Deere

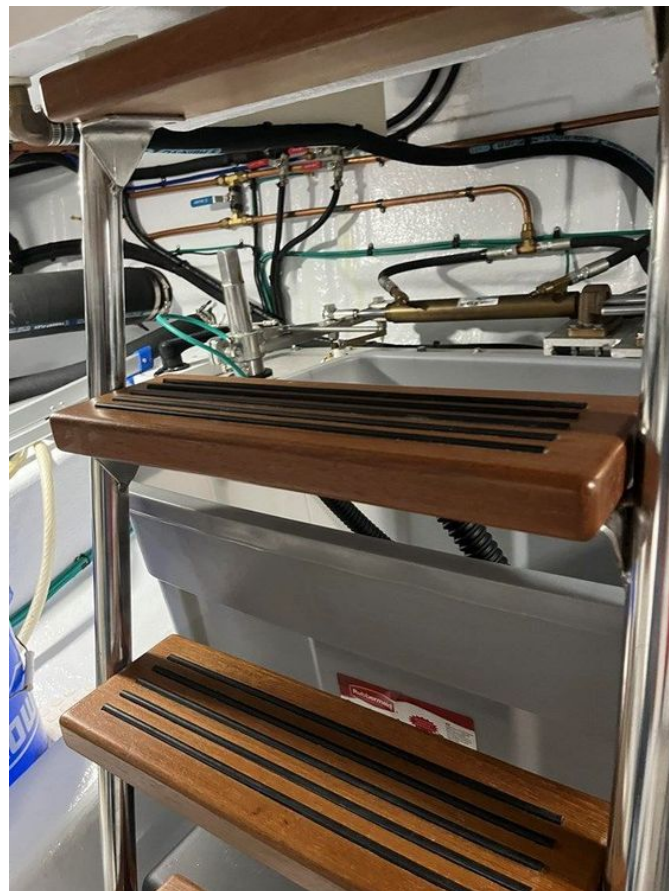
Fuel Type:

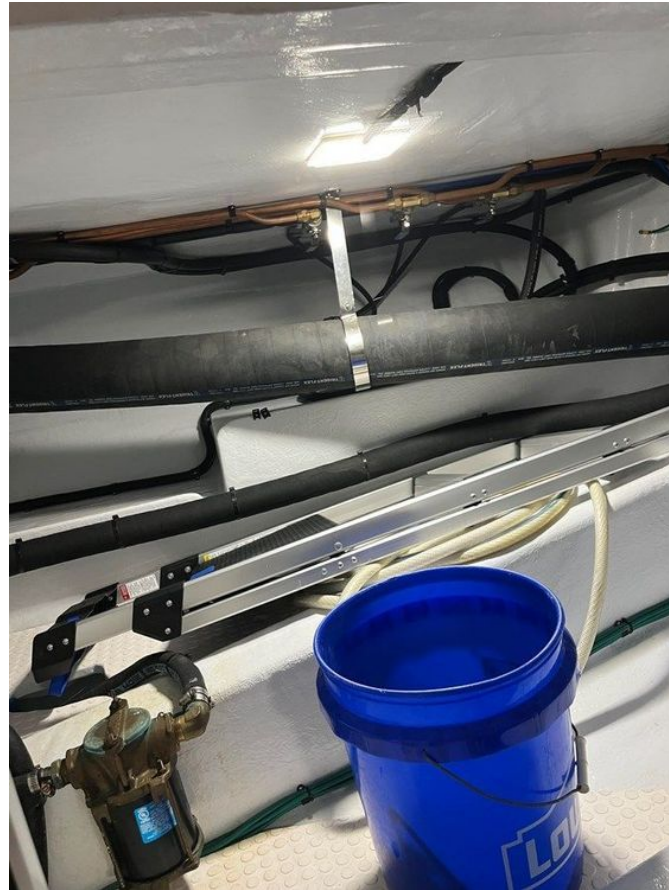
Diesel

GALLERY











CONTACTS

Shestakov Yacht Sales is a brokerage company specializing in the sale and service of yachts worldwide. The company offers services for buying and selling both new and used motor yachts, sailing vessels, and luxury superyachts. They also provide yacht registration, insurance, technical maintenance, crew selection, and charter organization services across the U.S., Canada, Latin America, the Caribbean, and the Bahamas.

The founder and lead broker of the company is Andrey Shestakov, a licensed and certified expert with extensive experience in marine engineering and shipbuilding.

The company has an extensive network of partnerships with major yacht manufacturers worldwide and provides services in multiple languages, including Russian, Ukrainian, Spanish, and English. The office is in Dania Beach, Florida, USA.

For more information and to view available yachts, you can visit the company's official website: <https://shestakovyachtsales.com>

Contact details

Phone: +1(954)274-4435

Email: andrey@shestakovyachtsales.com

Address



1380 Weeping Willow Way, Hollywood,
Florida 33019