



SHESTAKOV

Yacht Sales

#1 HULL COMMERCIAL FISHING – KEY WEST



Builder:

KEY WEST

Model:

#1 Hull Commercial Fishing

LOA:

39' 0" (12.14 m)

Beam:

14' 0" (4.32 m)

Fuel Capacity:

600 Gallons

Sleeps:

4

Total Heads:

1

Hull Material:

Fiberglass and Plastic Yachts

Deck Material:

Fiberglass

Engines:

1

Manufacturer:

Caterpillar

Engine Type:

Inboard

If you would like to buy a yacht **#1 HULL COMMERCIAL FISHING – KEY WEST** or would like help, please call +1(954)274-4435 or visit shestakovyachtsales.com

TABLE OF CONTENTS

OVERVIEW 3

- Selecting a #1 Hull Commercial Fishing 3
- Features of the Model 3
- Technical Specifications 4
- Pricing and Ordering 4
- Questions and Answers 4
- Owner Experience Review 5
- Pros and Cons 6
- Comparison with Other Models 7

SPECIFICATIONS 8

GALLERY 9

CONTACTS 14

OVERVIEW

The #1 Hull Commercial Fishing from KEY WEST is configured as a dedicated commercial fishing vessel in the motor yacht segment, built on a sturdy fiberglass and plastic hull. It is driven by a single Caterpillar inboard diesel and provides practical crew quarters designed for extended fishing operations. For professional brokerage assistance and detailed guidance, contact Andrey Shestakov and the team at Shestakov Yacht Sales.

Selecting a #1 Hull Commercial Fishing

Opt for the #1 Hull Commercial Fishing when your priority is a rugged, work-oriented platform with dependable propulsion and efficient onboard arrangements for commercial use. The broad 14 ft beam contributes to operational stability, while a single Caterpillar inboard diesel keeps mechanical complexity and routine servicing straightforward. With berths for four and a single head, this design delivers a pragmatic balance between work capability and essential crew accommodations.

Features of the Model

- Single Caterpillar inboard diesel for reliable operation and simplified maintenance on a commercial fishing vessel.
- 39 ft LOA and 14 ft beam delivering the footprint and stance preferred for nearshore and offshore tasks in a motor yacht configuration.
- 600-gallon fuel tank to enable extended runs and multi-day trips.
- Sleeps four with one dedicated head to support crew rotation and rest.
- Robust fiberglass and plastic hull and fiberglass deck for durability and ease of maintenance.
- Constructed by KEY WEST, combining established build practices with

pragmatic fishery-oriented design.

Technical Specifications

- Length Overall (LOA): 39 ft (12.14 m)
- Beam: 14 ft (4.32 m)
- Engines: 1 x Caterpillar, Inboard, Diesel
- Fuel Capacity: 600 gal
- Sleeps: 4
- Heads: 1
- Hull Material: fiberglass and plastic
- Deck Material: Fiberglass
- Category: motor yacht; Sub-Category: commercial fishing vessel

Pricing and Ordering

For questions about pricing, current availability, or the ordering process for the #1 Hull Commercial Fishing, reach out to broker Andrey Shestakov at Shestakov Yacht Sales. We handle inspections, paperwork, and scheduling to align delivery with your operational needs and budget.

Questions and Answers

Q: What are the overall dimensions of the #1 Hull Commercial Fishing? A: The **LOA is 39 ft (12.14 m)** and the **beam is 14 ft (4.32 m)**, creating a stable work platform suitable for a commercial fishing vessel.

Q: What engine powers this model? A: It is driven by a single **Caterpillar inboard diesel** engine, chosen for steady commercial performance and uncomplicated servicing.

Q: How many people can sleep aboard, and how many heads are there? A: The vessel **sleeps 4** and contains **1 head** , providing the basic comfort required between shifts.

Q: What is the fuel capacity and why does it matter? A: With **600 gallons** of fuel aboard, the design supports extended fishing windows and range planning typical for a commercial fishing vessel.

Q: What is the hull and deck construction? A: The hull is **fiberglass and plastic** and the deck is **fiberglass** , offering a durable, low-maintenance foundation. For acquisition details, contact **Andrey Shestakov** at **Shestakov Yacht Sales** .

Owner Experience Review

Owners and brokers consistently describe the #1 Hull Commercial Fishing by KEY WEST as primarily a work-first vessel, with many semi-custom versions outfitted for stone-crab and lobster hauling, trawling, and longlining.

Advertised examples often list hydraulics with a side-hauler, a barnacle blaster, and a heavy-hauler davit, while community posts document others adapting the same hull for offshore sportfishing and extended trips to the Bahamas.

On the water, broker-reported performance centers around a cruise speed near ~15–16 kt at 75–80% load (consuming roughly 60–80 gpd on long runs) and a top speed in the neighborhood of 20–21 kt. The pronounced Carolina flare is widely credited for delivering a dry, soft motion; however, several owners note the boat has a tendency to run bow-high and can pound in tight, steep short chop unless trimmed down or assisted with trim tabs.

The arrangement is unabashedly commercial: a single cabin plus a wheelhouse (one listed boat received a new house in 2021), and a broad, uncluttered deck that accommodates crew movement and gear handling. Beam is frequently highlighted—the 14'+ breadth is cited in listings and at least one owner

referred to his semi-custom as 'a very efficient 16-foot beam boat'—which enhances stability and deck ergonomics at the expense of interior luxury. Across owner reports, foam-filled hulls and a stout-running attitude are credited with improving day-to-day comfort; nonetheless, this model prioritizes function over plush accommodations.

Maintenance history reflects hard offshore service. Brokered examples show significant refit timelines: a 2020 Cat 3406B (600 hp) repower, Twin Disc gear rebuilds in 2021 and 2023, a full rewire in August 2021, and renewed underwater components such as shafts, cutlass and stern bearings, a rudder bearing, and prop work. Forum recommendations stress pragmatic pre-purchase checks—reprop after repower, fuel lift pump inspections, spark plug and water pump checks, compression testing—and vigilance with wiring in saltwater environments. One owner mentioned a battery-tray failure that caused chafe through a compartment before it was fixed. For buyers seeking long-term assurance, KEY WEST publishes a 10-year structural hull warranty.

Pros and Cons

- Dry, soft ride reputation from the Carolina flare, with owners saying they 'make a hell of a hull.'
- Wide beam and open work deck support stone-crab/lobster gear, trawls, and longlining.
- Brokered examples show practical performance of ~15–16 kt cruise and ~20–21 kt top.
- Can run bow-high and may pound in tight, steep short swells unless trimmed or using tabs.
- Fuel use on long runs is significant at roughly 60–80 gallons per day at cruise loads.
- Workboat layout with a single cabin and wheelhouse is functional rather than luxury.

Comparison with Other Models

Model	LOA	Beam	Draft	Speed (Cruising/Max)	Gross Tonnage
#1 Hull Commercial Fishing	39' 0" (12.14 m)	14' 0" (4.32 m)			
239 DFS	24' 0" (7.32 m)	8' 0" (2.62 m)	4' 7" (1.40 m) – 7' 7" (2.30 m)	22 kn	3.5
239 FS	24' 0" (7.32 m)	8' 0" (2.59 m)			
189FS	18' 0" (5.66 m)	8' 0" (2.44 m)			
Center Console	24' 0" (7.32 m)	8' 0" (2.59 m)			
175DC	17' 0" (5.31 m)	7' 0" (2.31 m)			
203 DFS	22' 0" (6.71 m)	8' 0" (2.44 m)			
230 Bay Reef	23' 0" (7.01 m)	8' 0" (2.59 m)	3' 10" (1.17 m)	30 kn / 61 kn	
219 FS	21' 0" (6.63 m)	8' 0" (2.59 m)			
2300 Walkaround	23' 0" (7.01 m)	8' 0" (2.56 m)			

SPECIFICATIONS

LOA:

39' 0" (12.14 m)

Fuel Capacity:

600 Gallons

Sleeps:

4

Hull Material:

Fiberglass and Plastic Yachts

Engines:

1

Engine Type:

Inboard

Beam:

14' 0" (4.32 m)

Total Heads:

1

Deck Material:

Fiberglass

Manufacturer:

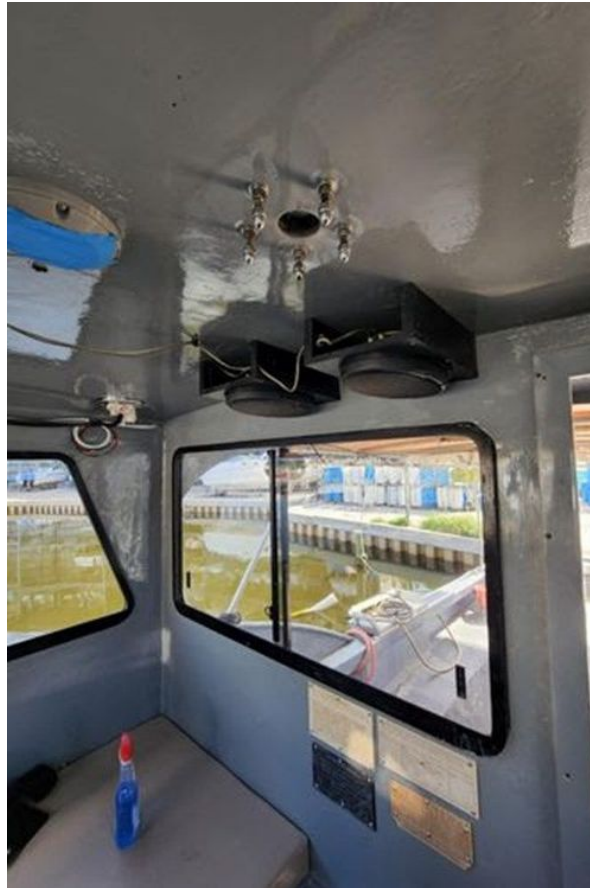
Caterpillar

Fuel Type:

Diesel

GALLERY











CONTACTS

Shestakov Yacht Sales is a brokerage company specializing in the sale and service of yachts worldwide. The company offers services for buying and selling both new and used motor yachts, sailing vessels, and luxury superyachts. They also provide yacht registration, insurance, technical maintenance, crew selection, and charter organization services across the U.S., Canada, Latin America, the Caribbean, and the Bahamas.

The founder and lead broker of the company is Andrey Shestakov, a licensed and certified expert with extensive experience in marine engineering and shipbuilding.

The company has an extensive network of partnerships with major yacht manufacturers worldwide and provides services in multiple languages, including Russian, Ukrainian, Spanish, and English. The office is in Dania Beach, Florida, USA.

For more information and to view available yachts, you can visit the company's official website: <https://shestakovyachtsales.com>

Contact details

Phone: +1(954)274-4435

Email: andrey@shestakovyachtsales.com

Address



1380 Weeping Willow Way, Hollywood,
Florida 33019