



SHESTAKOV

Yacht Sales

410 - LAGOON



Builder:

Lagoon

Model:

410

LOA:

41' 0" (12.50 m)

Hull Material:

Fiberglass and Plastic Yachts

Deck Material:

Fiberglass

Engines:

1

Manufacturer:

Yanmar

If you would like to buy a yacht **410 - Lagoon** or would like help, please call +1(954)274-4435 or visit shestakovyachtsales.com

TABLE OF CONTENTS

OVERVIEW	3
Selecting a 410	3
Features of the Model	3
Technical Specifications	3
Pricing and Ordering	4
Questions and Answers	4
Owner Experience Review	4
Pros and Cons	5
Comparison with Other Models	6
SPECIFICATIONS	7
GALLERY	8
CONTACTS	13

OVERVIEW

Discover the 410 from Lagoon—a capable sailing yacht catamaran constructed with a resilient fiberglass hull. Listed by Shestakov Yacht Sales, broker Andrey Shestakov can assist with model selection, specification checks, and handling the purchase process for this vessel.

Selecting a 410

If you're evaluating a pragmatic sailing yacht benefiting from the inherent stability of a catamaran, the 410 merits close consideration. It combines a sturdy fiberglass hull with a Fiberglass deck and is driven by a single Yanmar auxiliary engine. Contact Andrey Shestakov at Shestakov Yacht Sales to match the 410 to your cruising ambitions and to check current availability.

Features of the Model

- Built by Lagoon
- Faithful to its identity as a sailing yacht catamaran
- Robust fiberglass hull paired with a Fiberglass deck
- Single Yanmar engine supplying auxiliary propulsion
- LOA of 41 ft (12.5 m) for manageable handling and dockage

Technical Specifications

- Model: 410
- Builder: Lagoon
- Category: sailing yacht; catamaran
- Hull: fiberglass

- Deck: Fiberglass
- LOA: 41 ft (12.5 m)
- Engine: 1 x Yanmar

Pricing and Ordering

For up-to-date pricing, current availability, and customized guidance on the 410 from Lagoon, please reach out to Andrey Shestakov at Shestakov Yacht Sales. Our brokerage handles inspections, negotiation support, and delivery coordination to make your purchase as seamless as possible.

Questions and Answers

Q: What is the **length overall (LOA)** of the 410? A: The **LOA** measures 41 ft (12.5 m), giving the 410 a size that suits a wide range of cruising profiles.

Q: What **engine** powers the yacht? A: The 410 is fitted with a single **Yanmar** engine for auxiliary propulsion and close-quarters handling.

Q: What is the **hull material** ? A: The hull is constructed from fiberglass, and the **deck material** is Fiberglass.

Q: What is the **yacht type** ? A: It is a sailing yacht catamaran.

Q: How do I get **pricing** or place an **order** ? A: Contact broker Andrey Shestakov at Shestakov Yacht Sales for current pricing, optional specifications, and the steps required to reserve or purchase the 410.

Owner Experience Review

Owners frequently choose the Lagoon 410 for family-oriented cruising and liveaboard use, and many hulls have operated in four-cabin charter fleets. The

model enjoys a reputation as a capable bluewater cruiser that favors a stable, comfortable ride—prioritizing cruising comfort over sporty performance.

Under sail, typical passage-making speeds fall in the high 6s to high 7s knots range, with 8–10 knots attainable in favorable conditions and the occasional 11 knots on very good days. Interior impressions often highlight a surprisingly roomy saloon and cockpit for a 41' cat, with ample headroom and livability that owners commonly applaud; later S2 iterations refined ergonomics. The four-cabin charter format suits guest use well, while owner configurations offer a larger starboard head; however, some long-term owners report dated joinery and limited storage, issues often remedied during refits.

Maintenance feedback is variable: multiple owners have reported bulkhead or delamination concerns, and it's common to see reinforcements added beneath tanks or at bulkhead junctions during refits. Owners caution against driving hard into head seas and heavy wind, as this can create localized structural loads. The engines are mounted aft with generally acceptable service access, though certain maintenance tasks require tight working positions or removal of cabinetry. Older examples frequently need upgrades to electrical systems, plumbing, and rigging; many boats on the market have been sold following thorough refits. Typical used-market pricing sits around USD 200k–350k, depending on year and condition.

Pros and Cons

- Sea-kindly and stable platform well suited for family cruising and offshore passages.
- Generous saloon and cockpit volume with notable headroom for a 41' cat.
- Versatile interior plans: practical four-cabin charter setups and an owner layout featuring a larger starboard head.
- Not designed for racing; expected sailing speeds are in the high 6s to high 7s

knots.

- Documented reports of bulkhead or delamination problems, with reinforcement refits commonly performed—especially if the boat has been driven hard into head seas.
- Older vessels often require updates to electrics, plumbing, and rigging, and some engine servicing tasks can be constrained by tight spaces.

Comparison with Other Models

Model	LOA	Beam	Draft	Speed (Cruising/Max)	Gross Tonnage
410	41' 0" (12.50 m)				
52	52' 0" (15.85 m)	28' 0" (8.74 m)	4' 11" (1.50 m)	7 kn / 8 kn	26.77
LAGOON 440	44' 0" (13.61 m)	25' 0" (7.80 m)	4' 3" (1.30 m)		
46	46' 0" (14.02 m)	26' 0" (7.95 m)	14' 6" (4.42 m)	7 kn	15770
450	46' 0" (14 m)	25' 0" (7.84 m)	4' 3" (1.30 m)	7 kn / 9 kn	
Lagoon 630	64' 0" (19.51 m)	33' 0" (10.06 m)	13' 1" (4 m)	10 kn / 16 kn	33
400 S2	41' 0" (12.53 m)	23' 0" (7.25 m)	3' 12" (1.21 m)	6 kn	
Lagoon 620	62' 0" (18.90 m)			10 kn	
620	62' 0" (18.90 m)	32' 0" (10 m)	5' 1" (1.55 m)		
50	50' 0" (15.24 m)	26' 0" (8.10 m)	4' 7" (1.40 m)		

SPECIFICATIONS

LOA:

41' 0" (12.50 m)

Hull Material:

Fiberglass and Plastic Yachts

Engines:

1

Deck Material:

Fiberglass

Manufacturer:

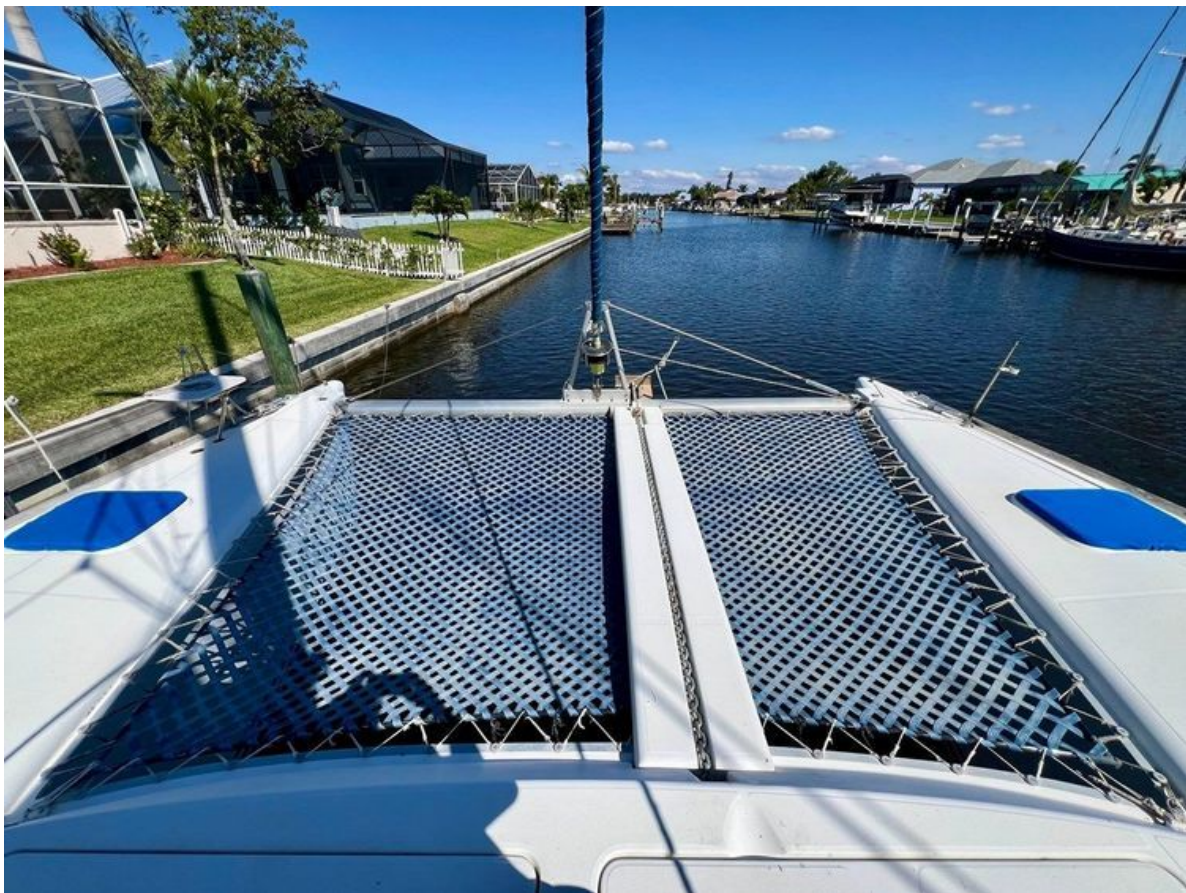
Yanmar

GALLERY











CONTACTS

Shestakov Yacht Sales is a brokerage company specializing in the sale and service of yachts worldwide. The company offers services for buying and selling both new and used motor yachts, sailing vessels, and luxury superyachts. They also provide yacht registration, insurance, technical maintenance, crew selection, and charter organization services across the U.S., Canada, Latin America, the Caribbean, and the Bahamas.

The founder and lead broker of the company is Andrey Shestakov, a licensed and certified expert with extensive experience in marine engineering and shipbuilding.

The company has an extensive network of partnerships with major yacht manufacturers worldwide and provides services in multiple languages, including Russian, Ukrainian, Spanish, and English. The office is in Dania Beach, Florida, USA.

For more information and to view available yachts, you can visit the company's official website: <https://shestakovyachtsales.com>

Contact details

Phone: +1(954)274-4435

Email: andrey@shestakovyachtsales.com

Address



1380 Weeping Willow Way, Hollywood,
Florida 33019