



SHESTAKOV

Yacht Sales

LAGOON 42 – LAGOON



Builder:

Lagoon

Model:

Lagoon 42

LOA:

42' 0" (12.80 m)

Min Draft:

4' 1" (1.25 m)

Beam:

25' 0" (7.70 m)

Max Draft:

4' 1" (1.25 m)

Water Capacity:

79.25 Gallons

Fuel Capacity:

79.25 Gallons

Sleeps:

4

Total Heads:

5

Crew Cabin:

1

Crew Berths:

2

If you would like to buy a yacht **LAGOON 42 – Lagoon** or would like help, please call +1(954)274-4435 or visit shestakovyachtsales.com

TABLE OF CONTENTS

| | |
|---|-----------|
| OVERVIEW | 3 |
| Selecting a Lagoon 42 | 3 |
| Features of the Model | 3 |
| Technical Specifications | 4 |
| Pricing and Ordering | 4 |
| Questions and Answers | 5 |
| Owner Experience Review | 5 |
| Pros and Cons | 6 |
| Comparison with Other Models | 6 |
| SPECIFICATIONS | 8 |
| GALLERY | 9 |
| CONTACTS | 14 |

OVERVIEW

The Lagoon 42 from Lagoon is a popular sail yacht presented in a contemporary catamaran format, built with a durable fiberglass hull and an FRP deck. Offered through Shestakov Yacht Sales, all inquiries are handled directly by broker Andrey Shestakov.

Selecting a Lagoon 42

If you prioritize a steady catamaran platform with expansive living areas, the Lagoon 42 is noteworthy for its 25 ft (7.7 m) beam and a shallow 4.10 ft (1.25 m) draft that opens up many coastal anchorages. Twin Yanmar diesel engines provide confident low-speed control and dependable auxiliary power for passages, while the vessel's fuel and water capacities are sized to support weekend cruises and longer stays aboard. As a purpose-built sail yacht, it appeals to owners seeking efficient passagemaking combined with the versatility of a multihull.

Features of the Model

- Twin Yanmar power: 2 x diesel engines delivering dependable propulsion and ease of docking
- Spacious footprint: LOA 42 ft (12.8 m) with a wide 25 ft (7.7 m) beam
- Shallow draft: 4.10 ft (1.25 m) enabling access to a wider range of cruising areas
- Comfortable accommodations: capacity for 8; sleeps 4; 5 heads
- Dedicated crew space: 1 crew cabin with 2 berths
- Construction: fiberglass hull paired with an FRP deck
- Configuration: true catamaran advantages—enhanced stability and generous living volumes

- Tankage balanced for cruising: approximately 79.25 gallons each for fuel and water

Technical Specifications

- Length overall (LOA): 42 ft (12.8 m)
- Beam: 25 ft (7.7 m)
- Draft (min/max): 4.10 ft (1.25 m) / 4.10 ft (1.25 m)
- Engines: 2 x Yanmar
- Fuel type: Diesel
- Hull material: fiberglass
- Deck material: FRP
- Hull configuration: catamaran
- Accommodation capacity: 8
- Sleeps: 4
- Heads: 5
- Crew cabins: 1
- Crew beds: 2
- Water capacity: 79.25 gal
- Fuel capacity: 79.25 gal

Pricing and Ordering

To obtain current pricing, confirm availability, or arrange a private viewing of the Lagoon 42, please contact Shestakov Yacht Sales. Broker Andrey Shestakov is available to walk you through detailed specifications, paperwork, and delivery options tailored to your schedule.

Questions and Answers

Q: Is the Lagoon 42 a sail catamaran? A: Yes. It is a sail yacht laid out as a catamaran with a fiberglass hull and an FRP deck.

Q: What are the key dimensions? A: The **LOA** measures 42 ft (12.8 m), the **beam** is 25 ft (7.7 m), and the **draft** is 4.10 ft (1.25 m).

Q: What engines power the yacht? A: The yacht is equipped with **2 x Yanmar diesel** engines, providing reliable auxiliary power and maneuvering capability.

Q: How many people can stay aboard and how many heads are there? A: The vessel has an accommodation capacity of **8** , **sleeps 4** , includes **5 heads** , and features **1 crew cabin** with **2 beds** .

Q: What are the tank capacities? A: The **fuel capacity** is 79.25 gal and the **water capacity** is 79.25 gal, which support extended cruising when combined with the catamaran layout.

Owner Experience Review

Owners often choose the Lagoon 42 from Lagoon for family cruising, comfortable liveaboard life, and commercial charter use—most commonly found in 3 or 4 cabin arrangements. Many proprietors report the yacht is straightforward to handle short handed, making it well suited to weekend escapes and extended voyages for couples or small crews. While offshore passages are possible, owners advise that the level of ocean ready equipment varies between privately owned and ex charter vessels.

On the water the Lagoon 42 favours comfort over outright speed. The self tacking jib simplifies sail handling but can constrain performance on deep downwind legs; as a result, owners frequently add a Code 0 or spinnaker to enhance reaching and running angles. Reports highlight the boat's stability and

seakindly motion in waves rather than a sporty helm, and note that performance in light airs is generally modest.

Life aboard is a particular strength: the saloon feels very spacious and apartment like, the owner's layout offers a large master cabin with a generous shower, and the interior benefits from ample natural light and thoughtful ergonomics. The 4 cabin/4 head setup is popular for guest comfort, though owners remind that fitout standards influence levels of noise and vibration. Typical ownership considerations include upgrading the often undersized stock anchor, regular servicing of the twin Yanmar units (engine room access is generally fair and operating costs moderate), maintaining air conditioning, generators and water makers, and budgeting for refit work on used or ex charter boats (sails, rigging, electrical systems and upholstery).

Pros and Cons

- Very spacious, apartment like living areas with abundant natural light make it ideal for liveaboard cruising.
- Sail plan and systems designed for short handed operation suit couples and family crews.
- Flexible 3 or 4 cabin layouts adapt well to private ownership and charter duties.
- Comfort first design results in modest performance in light wind conditions.
- Self tacking jib reduces sail handling complexity but restricts deep downwind angles unless complemented by a Code 0 or spinnaker.
- The stock anchor is frequently viewed as undersized and commonly replaced.

Comparison with Other Models

| Model | LOA | Beam | Draft | Speed (Cruising/Max) | Gross Tonnage |
|-------|-----|------|-------|----------------------|---------------|
|-------|-----|------|-------|----------------------|---------------|

| | | | | | |
|------------|------------------|------------------|-----------------|---------------|-------|
| Lagoon 42 | 42' 0" (12.80 m) | 25' 0" (7.70 m) | 4' 1" (1.25 m) | | |
| 52 | 52' 0" (15.85 m) | 28' 0" (8.74 m) | 4' 11" (1.50 m) | 7 kn / 8 kn | 26.77 |
| LAGOON 440 | 44' 0" (13.61 m) | 25' 0" (7.80 m) | 4' 3" (1.30 m) | | |
| 46 | 46' 0" (14.02 m) | 26' 0" (7.95 m) | 14' 6" (4.42 m) | 7 kn | 15770 |
| 450 | 46' 0" (14 m) | 25' 0" (7.84 m) | 4' 3" (1.30 m) | 7 kn / 9 kn | |
| 410 | 41' 0" (12.50 m) | | | | |
| Lagoon 630 | 64' 0" (19.51 m) | 33' 0" (10.06 m) | 13' 1" (4 m) | 10 kn / 16 kn | 33 |
| 400 S2 | 41' 0" (12.53 m) | 23' 0" (7.25 m) | 3' 12" (1.21 m) | 6 kn | |
| Lagoon 620 | 62' 0" (18.90 m) | | | 10 kn | |
| 620 | 62' 0" (18.90 m) | 32' 0" (10 m) | 5' 1" (1.55 m) | | |

SPECIFICATIONS

LOA:

42' 0" (12.80 m)

Beam:

25' 0" (7.70 m)

Water Capacity:

79.25 Gallons

Sleeps:

4

Crew Cabin:

1

Hull Material:

Fiberglass and Plastic Yachts

Hull Configuration:

Catamaran

Engines:

2

Fuel Type:

Diesel

Min Draft:

4' 1" (1.25 m)

Max Draft:

4' 1" (1.25 m)

Fuel Capacity:

79.25 Gallons

Total Heads:

5

Crew Berths:

2

Deck Material:

FRP

Manufacturer:

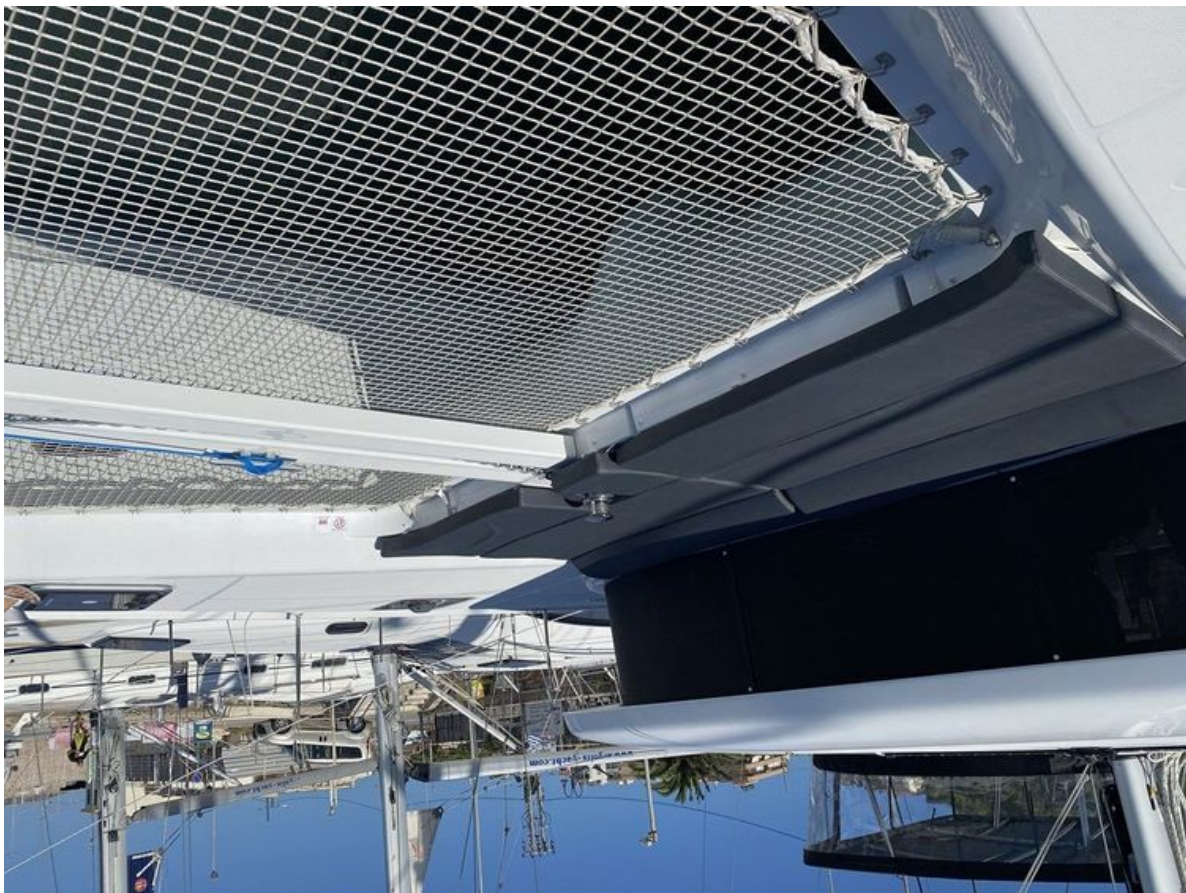
Yanmar

GALLERY











CONTACTS

Shestakov Yacht Sales is a brokerage company specializing in the sale and service of yachts worldwide. The company offers services for buying and selling both new and used motor yachts, sailing vessels, and luxury superyachts. They also provide yacht registration, insurance, technical maintenance, crew selection, and charter organization services across the U.S., Canada, Latin America, the Caribbean, and the Bahamas.

The founder and lead broker of the company is Andrey Shestakov, a licensed and certified expert with extensive experience in marine engineering and shipbuilding.

The company has an extensive network of partnerships with major yacht manufacturers worldwide and provides services in multiple languages, including Russian, Ukrainian, Spanish, and English. The office is in Dania Beach, Florida, USA.

For more information and to view available yachts, you can visit the company's official website: <https://shestakovyachtsales.com>

Contact details

Phone: +1(954)274-4435

Email: andrey@shestakovyachtsales.com

Address



1380 Weeping Willow Way, Hollywood,
Florida 33019