



SHESTAKOV

Yacht Sales

## LAGOON 630 – LAGOON



**Builder:**

Lagoon

**Model:**

Lagoon 630

**LOA:**

64' 0" (19.51 m)

**Beam:**

33' 0" (10.06 m)

**Max Draft:**

13' 1" (4 m)

**Cruise Speed:**

10 kn / 11.51 mph

**Max Speed:**

16 kn / 18.41 mph

**Gross Tonnage:**

33 Pounds

**Water Capacity:**

253.6 Gallons

**Fuel Capacity:**

343.42 Gallons

**Sleeps:**

8

**Total Heads:**

4

If you would like to buy a yacht **LAGOON 630 – Lagoon** or would like help, please call +1(954)274-4435 or visit [shestakovyachtsales.com](http://shestakovyachtsales.com)

---

# TABLE OF CONTENTS

---

<b>OVERVIEW .....</b>	<b>3</b>
<b>Selecting a Lagoon 630 .....</b>	<b>3</b>
<b>Features of the Model .....</b>	<b>3</b>
<b>Technical Specifications .....</b>	<b>4</b>
<b>Pricing and Ordering .....</b>	<b>4</b>
<b>Questions and Answers .....</b>	<b>5</b>
<b>Owner Experience Review .....</b>	<b>5</b>
<b>Pros and Cons .....</b>	<b>6</b>
<b>Comparison with Other Models .....</b>	<b>7</b>
<b>SPECIFICATIONS .....</b>	<b>8</b>
<b>GALLERY .....</b>	<b>9</b>
<b>CONTACTS .....</b>	<b>14</b>

## OVERVIEW

---

Designed by VPLP Design with interiors by Nauta Design, the Lagoon 630 from Lagoon is a motor yacht catamaran built in fiberglass that marries roomy comfort with efficient cruising capability. Presented by Shestakov Yacht Sales and broker Andrey Shestakov, this model combines generous interior volume, the stability of twin hulls, and practical systems designed for extended passages.

### Selecting a Lagoon 630

---

Select the Lagoon 630 when you prioritize expansive living environments, the steady platform of a catamaran, and trustworthy range-making capability. Measuring 64 ft (19.51 m) LOA with a 33 ft (10.06 m) beam, it provides exceptional deck and cabin volume ideal for family voyaging or entertaining guests. With a normal cruising pace of 10 knots (11.51 mph) and a maximum of 16 knots (18.41 mph), it makes coastal hops and island runs efficient. Accommodation for 8 people in four cabins, plus two crew cabins, suits owner-operator setups or yachts with professional crew. Reach out to Andrey Shestakov at Shestakov Yacht Sales to configure this motor yacht to your requirements.

### Features of the Model

---

- Design pedigree: hull by VPLP Design and interiors by Nauta Design
- Twin-hull stability inherent to its catamaran layout
- Constructed with a fiberglass hull and fiberglass deck
- Propulsion by 2 Volvo diesel engines for reliable power
- Practical performance: 10 knots cruise, 16 knots maximum
- Accommodations: sleeps 8 with 4 heads; crew quarters with 2 cabins and 2

berths

- Tankage to support extended cruising: approximately 343.42 gal fuel and 253.6 gal fresh water
- Gross tonnage of 33 GT reflects substantial onboard volume

## Technical Specifications

---

- Length overall (LOA): 64 ft (19.51 m)
- Beam: 33 ft (10.06 m)
- Max draft: 13.123 ft (4 m)
- Hull configuration: catamaran
- Hull material: fiberglass
- Deck material: Fiberglass
- Designers: VPLP Design (hull), Nauta Design (interior)
- Engines: 2 × Volvo, fuel type: Diesel
- Performance: 10 kn cruise (11.51 mph), 16 kn max (18.41 mph)
- Gross tonnage: 33 GT
- Accommodation: sleeps 8, 4 heads
- Crew: 2 cabins, 2 berths
- Fuel capacity: 343.42 gal
- Fresh water capacity: 253.6 gal
- Classification: motor yacht

## Pricing and Ordering

---

Equipment, optional packages, and final pricing for the Lagoon 630 depend on selected specifications and outfitting. For up-to-date availability, procurement advice, and a tailored price estimate, contact Andrey Shestakov at Shestakov Yacht Sales. Our brokerage team will assist you in specifying the right motor yacht catamaran and managing the purchase process from initial inquiry

through delivery.

## Questions and Answers

---

- Q: What are the **cruising** and **top speed** figures for the Lagoon 630? A: The vessel's **cruising speed** is 10 knots (11.51 mph) while the **top speed** is 16 knots (18.41 mph).
- Q: How many guests can sleep aboard, and how many **heads** are there? A: It **sleeps 8** in the guest accommodations and includes **4 heads** , plus **2 crew cabins** with **2 crew berths** .
- Q: What **engines** power the yacht, and what **fuel** do they use? A: Propulsion is provided by **2 Volvo** engines that operate on **diesel** .
- Q: What is the hull **configuration** and **material** ? A: The yacht is a catamaran built with a fiberglass hull and a fiberglass deck.
- Q: Who are the **designers** behind the model? A: The hull is by **VPLP Design** and the interior by **Nauta Design** , built by Lagoon and represented by Shestakov Yacht Sales with broker Andrey Shestakov.

## Owner Experience Review

---

Owners are drawn to the Lagoon 630 from Lagoon for its suitability for family cruising and entertaining larger groups—many owners note accommodation for roughly a dozen people depending on layout, with flexible 4–6 cabin configurations to suit different needs. Reviews commonly praise very large living areas (around 900 sq ft of interior), an expansive aft cockpit, abundant flybridge seating, and a broad foredeck, all of which enhance weekend escapes and relaxed anchorages. The model is also popular in crewed charter operations, where layout choices and storage capacity—often augmented with multiple refrigeration units, a watermaker, and generator options—support professional service.

Underway, sea trials and owner reports describe the yacht as steady in chop and comfortable at anchor. Twin Volvo D4 engines (260–300 hp) are cited as delivering a top speed near 17 knots, with efficient cruising in the single digits to mid teens for extended passages; owner forum logs reference passages at about 8.1 knots consuming roughly 12.5 L/hr on transoceanic-style runs. The well-separated engine installations, plus available bow thruster and joystick or dual helm controls, simplify tight quarters maneuvering compared to many monohulls. Routine maintenance is eased by deck hatches that provide direct access to engine rooms and electrical systems, although some owners have reported occasional electronics quirks (for example, AIS/plotter self display). A number of owners describe the interior finish as somewhat lightweight, and community threads across Lagoon models discuss bulkhead/core issues and recommend structural reinforcement after build, so comprehensive surveys and careful due diligence are advised for each boat.

## Pros and Cons

---

- Expansive interior (about 900 sq ft), plus a very large cockpit, flybridge, and foredeck ideal for entertaining and family use.
- Versatile 4–6 cabin arrangements and plentiful storage/options make it suitable for private cruising or commercial charter.
- Reported to be stable and “unflustered” underway, with straightforward handling from widely spaced twin engines and optional bow thruster/joystick.
- Some owners comment that the interior finish can feel a bit flimsy or “Ikea”-like.
- Reports exist of electronics niggles, including AIS/plotter self display issues on a new Lagoon 630.
- Owner threads across Lagoon models mention bulkhead and core concerns, so careful inspections are recommended.

## Comparison with Other Models

Model	LOA	Beam	Draft	Speed (Cruising/Max)	Gross Tonnage
Lagoon 630	64' 0" (19.51 m)	33' 0" (10.06 m)	13' 1" (4 m)	10 kn / 16 kn	33
52	52' 0" (15.85 m)	28' 0" (8.74 m)	4' 11" (1.50 m)	7 kn / 8 kn	26.77
LAGOON 440	44' 0" (13.61 m)	25' 0" (7.80 m)	4' 3" (1.30 m)		
46	46' 0" (14.02 m)	26' 0" (7.95 m)	14' 6" (4.42 m)	7 kn	15770
450	46' 0" (14 m)	25' 0" (7.84 m)	4' 3" (1.30 m)	7 kn / 9 kn	
410	41' 0" (12.50 m)				
400 S2	41' 0" (12.53 m)	23' 0" (7.25 m)	3' 12" (1.21 m)	6 kn	
Lagoon 620	62' 0" (18.90 m)			10 kn	
620	62' 0" (18.90 m)	32' 0" (10 m)	5' 1" (1.55 m)		
50	50' 0" (15.24 m)	26' 0" (8.10 m)	4' 7" (1.40 m)		

# SPECIFICATIONS

---

**LOA:**

64' 0" (19.51 m)

**Max Draft:**

13' 1" (4 m)

**Cruise Speed:**

10 kn / 11.51 mph

**Gross Tonnage:**

33 Pounds

**Fuel Capacity:**

343.42 Gallons

**Sleeps:**

8

**Crew Cabin:**

2

**Hull Material:**

Fiberglass and Plastic Yachts

**Hull Configuration:**

Catamaran

**Interior Designer:**

Nauta Design

**Engines:**

2

**Fuel Type:**

Diesel

**Beam:**

33' 0" (10.06 m)

**Max Speed:**

16 kn / 18.41 mph

**Water Capacity:**

253.6 Gallons

**Total Heads:**

4

**Crew Berths:**

2

**Deck Material:**

Fiberglass

**Hull Designer:**

VPLP Design

**Manufacturer:**

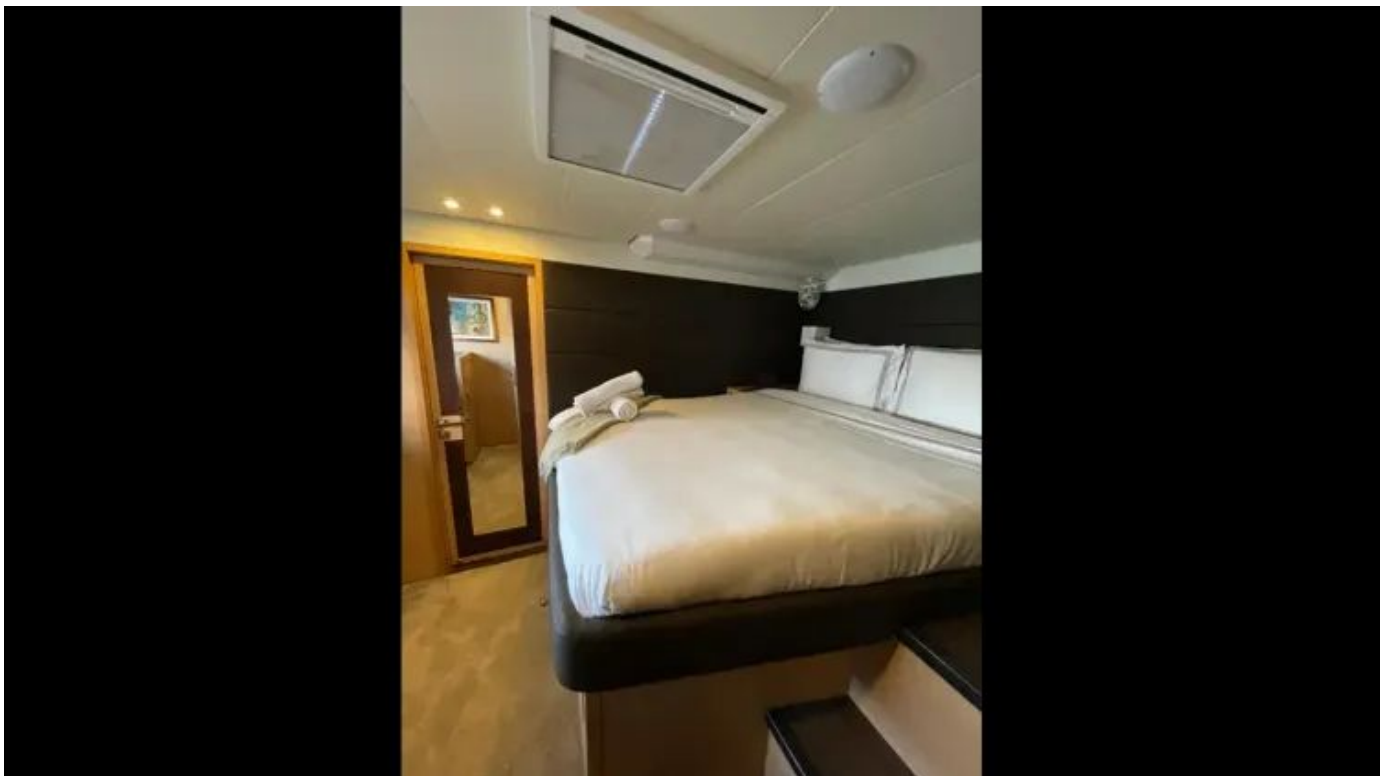
Volvo

# GALLERY











# CONTACTS

---

Shestakov Yacht Sales is a brokerage company specializing in the sale and service of yachts worldwide. The company offers services for buying and selling both new and used motor yachts, sailing vessels, and luxury superyachts. They also provide yacht registration, insurance, technical maintenance, crew selection, and charter organization services across the U.S., Canada, Latin America, the Caribbean, and the Bahamas.

The founder and lead broker of the company is Andrey Shestakov, a licensed and certified expert with extensive experience in marine engineering and shipbuilding.

The company has an extensive network of partnerships with major yacht manufacturers worldwide and provides services in multiple languages, including Russian, Ukrainian, Spanish, and English. The office is in Dania Beach, Florida, USA.

For more information and to view available yachts, you can visit the company's official website: <https://shestakovyachtsales.com>

## Contact details

---

**Phone:** +1(954)274-4435

**Email:** [andrey@shestakovyachtsales.com](mailto:andrey@shestakovyachtsales.com)

## Address

---



1380 Weeping Willow Way, Hollywood,  
Florida 33019