



SHESTAKOV

Yacht Sales

EAGLE 44 - LEONARDO YACHTS



Builder:

LEONARDO YACHTS

Model:

Eagle 44

LOA:

43' 0" (13.34 m)

Min Draft:

21' 7" (6.58 m)

Beam:

9' 0" (2.77 m)

Max Draft:

21' 7" (6.58 m)

Cruise Speed:

7 kn / 8.06 mph

Water Capacity:

17.7 Gallons

Fuel Capacity:

13.2 Gallons

Sleeps:

2

Total Heads:

1

Hull Material:

Fiberglass and Plastic Yachts

If you would like to buy a yacht **EAGLE 44 - LEONARDO YACHTS** or would like help, please call +1(954)274-4435 or visit shestakovyachtsales.com

TABLE OF CONTENTS

| | |
|---|-----------|
| OVERVIEW | 3 |
| Selecting an Eagle 44 | 3 |
| Features of the Model | 3 |
| Technical Specifications | 4 |
| Pricing and Ordering | 4 |
| Questions and Answers | 4 |
| Owner Experience Review | 5 |
| Pros and Cons | 6 |
| Comparison with Other Models | 6 |
| SPECIFICATIONS | 7 |
| GALLERY | 8 |
| CONTACTS | 13 |

OVERVIEW

The Eagle 44 from LEONARDO YACHTS is a sophisticated sail yacht designed primarily as a stylish daysailer. Built on a graceful fiberglass and plastic monohull, it combines traditional lines with modern simplicity for effortless day-sailing and comfortable overnights for two. Offered through Shestakov Yacht Sales with broker Andrey Shestakov, the Eagle 44 presents an elegant, low fuss option for owners who prize sailing purity and refined aesthetics.

Selecting an Eagle 44

Opting for the Eagle 44 means choosing a vessel focused on clean deck ergonomics, genuine sailing sensations, and straightforward ownership. As a purpose-built daysailer, it delivers a responsive monohull ride and uncomplicated systems—including a dependable inboard diesel—so maintenance is kept to a minimum. If your priorities are uncluttered lines, GRP construction, and a compact two-person interior, this yacht should be high on your shortlist. Shestakov Yacht Sales, led by Andrey Shestakov, will assist with selection, surveys, and logistical arrangements.

Features of the Model

- Purpose-built daysailer layout that simplifies days aboard and reduces complexity
- Monohull configuration that emphasizes direct sailing feedback and precise helm control
- Hull constructed of fiberglass and plastic with a durable GRP deck
- Inboard Volvo Penta diesel engine for trustworthy maneuvering and harbor handling
- Cozy sleeping arrangements for two with a single head for short cruises

- Efficient cruising performance at approximately 7 knots (8.06 mph)

Technical Specifications

- Length overall (LOA): 43 ft (13.34 m)
- Beam: 9 ft (2.77 m)
- Draft: 21.599 ft (6.5833 m)
- Hull configuration: Monohull
- Hull material: fiberglass and plastic
- Deck material: GRP
- Engines: 1 × Volvo Penta; Inboard; Diesel
- Cruising speed: 7 kn (8.06 mph)
- Accommodation: sleeps 2; Heads: 1
- Fresh water capacity: 17.7 gal
- Fuel capacity: 13.2 gal
- Interior designer: LEONARDO YACHTS

Pricing and Ordering

For up-to-date pricing, availability, and the purchasing process for the Eagle 44, reach out to Andrey Shestakov at Shestakov Yacht Sales. Our brokerage handles appointments, sea trials, surveys, contract negotiations, and delivery planning to align with your schedule and ownership goals.

Questions and Answers

Q: What type of yacht is the Eagle 44? A: The **type** is a sail yacht engineered as an upscale daysailer featuring a fiberglass and plastic monohull.

Q: What propulsion does it use? A: The **engine** arrangement is 1 × Volvo Penta,

configured **inboard** , running on **diesel** to provide dependable thrust and control when docking or motoring.

Q: How many people can stay aboard overnight? A: The **accommodations** are intended for 2 persons (sleeps 2) and include **heads** : 1, suitable for brief overnighting or weekend use.

Q: What are the key dimensions and draft? A: **LOA** measures 43 ft (13.34 m), **beam** is 9 ft (2.77 m), and **draft** is 21.599 ft (6.5833 m).

Q: How do I order or inspect one with Shestakov Yacht Sales? A: For **ordering** and inspections of the Eagle 44 by LEONARDO YACHTS, contact Andrey Shestakov at Shestakov Yacht Sales; we will coordinate showings, manage negotiations, and arrange delivery logistics.

Owner Experience Review

Owners and reviewers consistently characterize the Eagle 44 by LEONARDO YACHTS as an upscale day-sailer that performs beautifully at yacht-club regattas and casual coastal outings. Its contemporary underbody and Dykstra design provide crisp, confident handling, and the cockpit and winch arrangement make it straightforward to sail solo. The boat is explicitly designed as a quick, comfortable daysailer rather than a bluewater passagemaker, and that focused purpose is evident when you're underway.

Life aboard revolves around the generously proportioned, deep teak cockpit, which features a varnished mahogany table, an integrated sink, and the option to fit a refrigerator—making it comfortable for entertaining 6–8 guests.

Belowdecks, the layout is intentionally compact: a forward V double berth, a modest galley, and an electric toilet provide basic comfort for naps or short nights aboard, though taller individuals may find headroom limited; the joinery and wood finishes receive frequent compliments. Routine upkeep is

straightforward: maintaining varnish and teak, monitoring the Volvo Penta D1-20 saildrive, and, where fitted with electric winches, keeping batteries and winch motors in good condition; the large aft lazarette with a flush hatch aids routine access for servicing.

Pros and Cons

- Crisp, assured handling thanks to the modern underbody and Dykstra design.
- Simple to single hand owing to the cockpit layout and winch placement.
- Large teak cockpit with table, sink, and optional fridge comfortably accommodates 6–8 for social sailing.
- Interior is compact, offering only a forward double berth, a minimal galley and head, and restricted headroom for tall crew.
- Varnished mahogany and teak demand regular cosmetic upkeep to remain in top condition.
- Auxiliary systems and single handing gear require attention, including the Volvo Penta D1-20 saildrive and the battery/winch motor arrangement.

Comparison with Other Models

| Model | LOA | Beam | Draft | Speed (Cruising/Max) | Gross Tonnage |
|--------------------|------------------|----------------|-----------------|----------------------|---------------|
| Eagle 44 | 43' 0" (13.34 m) | 9' 0" (2.77 m) | 21' 7" (6.58 m) | 7 kn | |
| DaysailorWeekender | 38' 0" (11.58 m) | 8' 0" (2.54 m) | 13' 1" (4 m) | | |

SPECIFICATIONS

LOA:

43' 0" (13.34 m)

Beam:

9' 0" (2.77 m)

Cruise Speed:

7 kn / 8.06 mph

Fuel Capacity:

13.2 Gallons

Sleeps:

2

Hull Material:

Fiberglass and Plastic Yachts

Hull Configuration:

Monohull

Engines:

1

Engine Type:

Inboard

Min Draft:

21' 7" (6.58 m)

Max Draft:

21' 7" (6.58 m)

Water Capacity:

17.7 Gallons

Total Heads:

1

Deck Material:

GRP

Interior Designer:

Leonardo Yachts

Manufacturer:

Volvo Penta

Fuel Type:

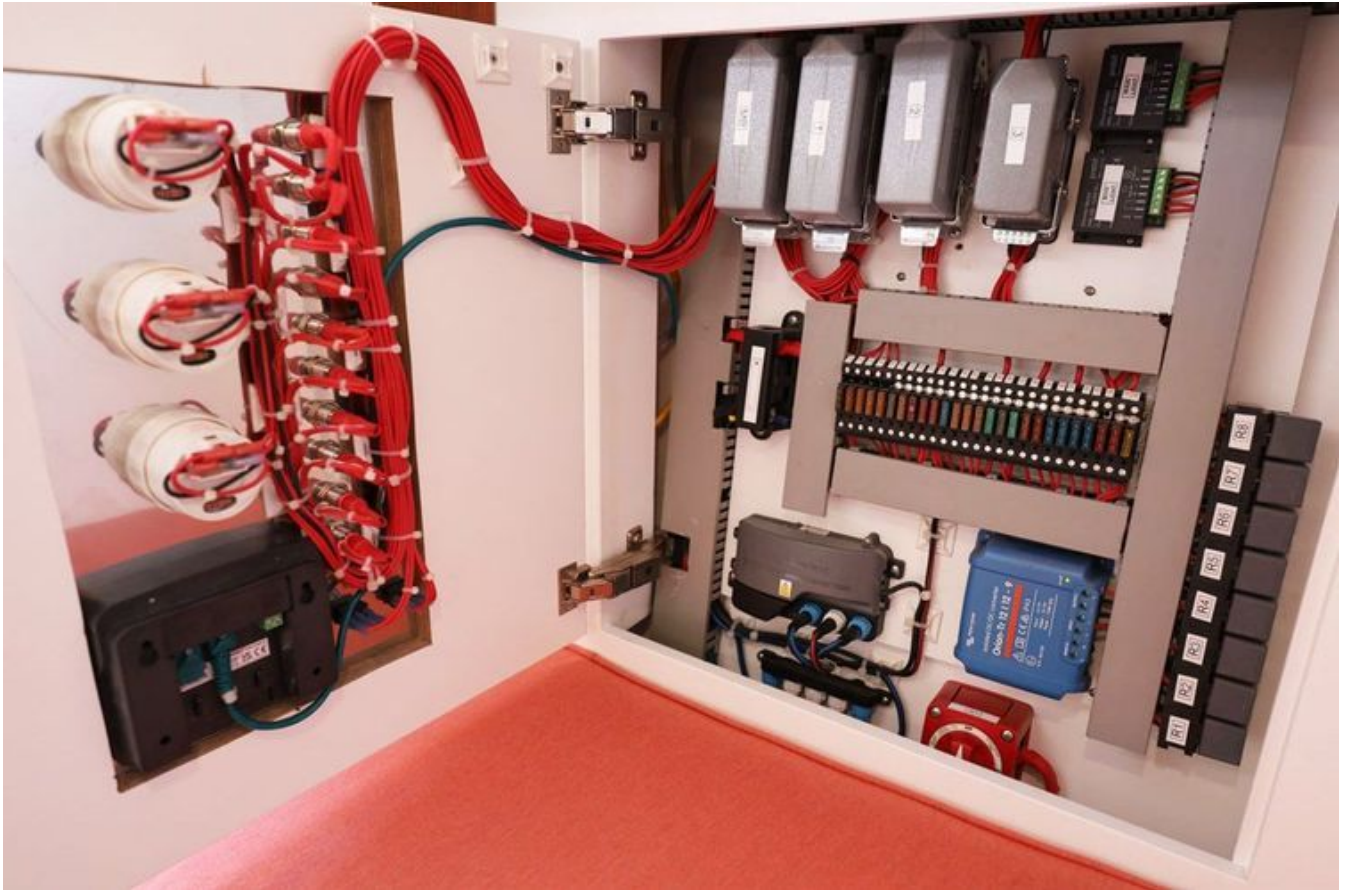
Diesel

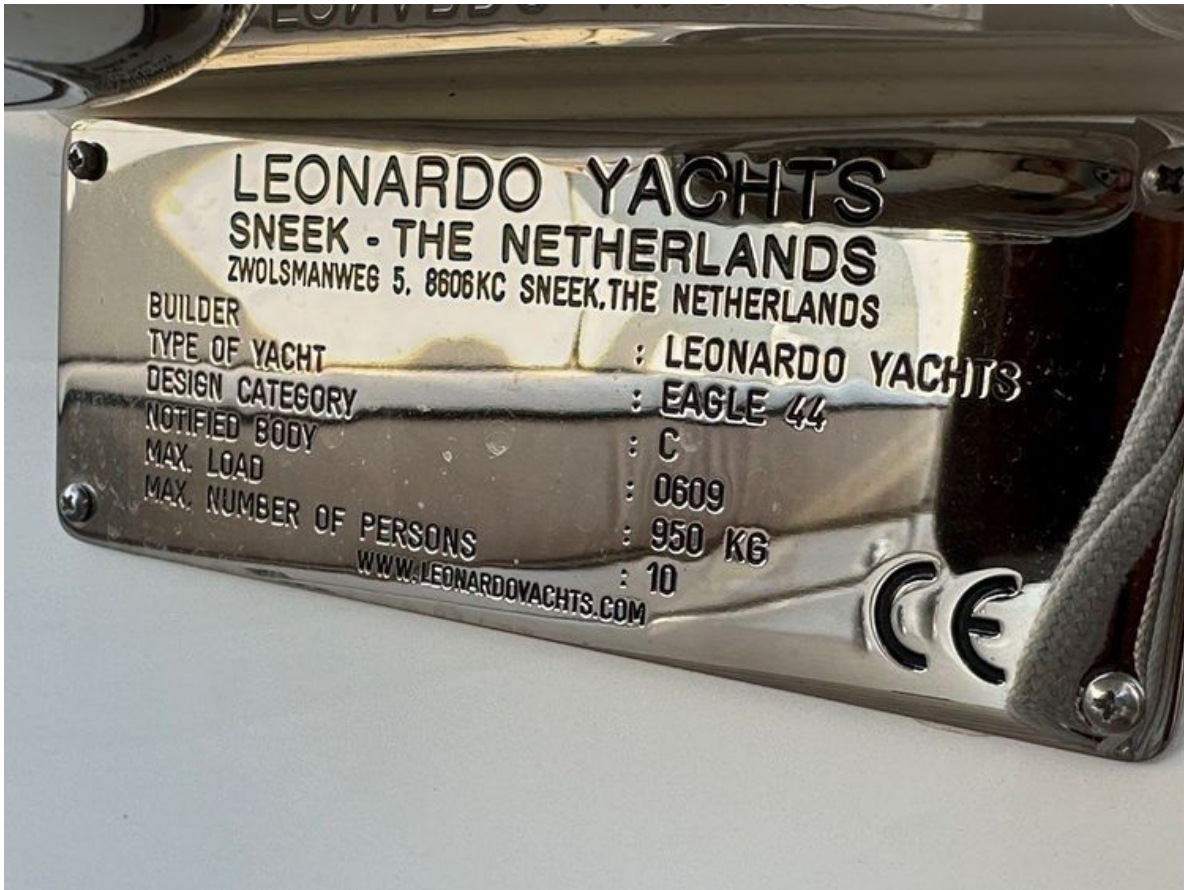
GALLERY











CONTACTS

Shestakov Yacht Sales is a brokerage company specializing in the sale and service of yachts worldwide. The company offers services for buying and selling both new and used motor yachts, sailing vessels, and luxury superyachts. They also provide yacht registration, insurance, technical maintenance, crew selection, and charter organization services across the U.S., Canada, Latin America, the Caribbean, and the Bahamas.

The founder and lead broker of the company is Andrey Shestakov, a licensed and certified expert with extensive experience in marine engineering and shipbuilding.

The company has an extensive network of partnerships with major yacht manufacturers worldwide and provides services in multiple languages, including Russian, Ukrainian, Spanish, and English. The office is in Dania Beach, Florida, USA.

For more information and to view available yachts, you can visit the company's official website: <https://shestakovyachtsales.com>

Contact details

Phone: +1(954)274-4435

Email: andrey@shestakovyachtsales.com

Address



1380 Weeping Willow Way, Hollywood,
Florida 33019