



SHESTAKOV

Yacht Sales

## 47 - LEOPARD CATAMARANS



**Builder:**

Leopard Catamarans

**Model:**

47

**LOA:**

47' 0" (14.33 m)

**Beam:**

23' 0" (7.01 m)

**Hull Material:**

Fiberglass and Plastic Yachts

**Deck Material:**

Fiberglass

**Engines:**

2

**Manufacturer:**

Yanmar

**Engine Type:**

Inboard

**Fuel Type:**

Diesel

If you would like to buy a yacht **47 - Leopard Catamarans** or would like help, please call +1(954)274-4435 or visit [shestakovyachtsales.com](http://shestakovyachtsales.com)

---

# TABLE OF CONTENTS

---

<b>OVERVIEW .....</b>	<b>3</b>
<b>Selecting a 47 .....</b>	<b>3</b>
<b>Features of the Model .....</b>	<b>3</b>
<b>Technical Specifications .....</b>	<b>4</b>
<b>Pricing and Ordering .....</b>	<b>4</b>
<b>Questions and Answers .....</b>	<b>4</b>
<b>Owner Experience Review .....</b>	<b>5</b>
<b>Pros and Cons .....</b>	<b>6</b>
<b>Comparison with Other Models .....</b>	<b>6</b>
<b>SPECIFICATIONS .....</b>	<b>8</b>
<b>GALLERY .....</b>	<b>9</b>
<b>CONTACTS .....</b>	<b>14</b>

---

## OVERVIEW

---

The 47 from Leopard Catamarans is a multi-purpose sailing yacht with the roomy layout of a catamaran, built atop a robust fiberglass and plastic hull. Propelled by twin Yanmar inboard diesels and featuring a wide 23 ft beam, it is designed to offer capable cruising and comfortable onboard living. Sales and brokerage support are handled by Shestakov Yacht Sales with broker Andrey Shestakov.

---

## Selecting a 47

---

If your priority is a family-oriented sailing yacht that benefits from the inherent stability of a twin-hulled catamaran, the 47 strikes a practical balance of onboard volume, operational economy, and straightforward systems. Its 47 ft (14.33 m) LOA and 23 ft (7.01 m) beam create the sort of platform many cruisers prefer for coastal cruising and extended living afloat. For inventory, surveys, and guidance on whether this model matches your cruising profile, consult Shestakov Yacht Sales.

---

## Features of the Model

---

- Twin-engine confidence: 2 x Yanmar inboard diesel power for efficient maneuvering and reliable passagemaking support.
- Broad-beam comfort: 23 ft (7.01 m) beam creates generous deck volume and stable footing underway and at anchor.
- Proven construction: a fiberglass and plastic hull with a fiberglass deck for durability and easy upkeep.
- Purpose-built platform: configured as a catamaran within the sailing yacht class to maximize living and stowage space.
- Backed by experts: guided purchase and after-sale support from Andrey

Shestakov and the Shestakov Yacht Sales team.

## Technical Specifications

---

- Builder: Leopard Catamarans
- Model: 47
- Type: sailing yacht
- Configuration: catamaran
- LOA: 47 ft (14.33 m)
- Beam: 23 ft (7.01 m)
- Engines: 2 x Yanmar, Inboard, Diesel
- Hull: fiberglass and plastic
- Deck: Fiberglass

## Pricing and Ordering

---

Prices and availability for the 47 from Leopard Catamarans depend on build year, condition, and current market demand. To explore current listings, comparable market values, or to plan a purchase, contact Shestakov Yacht Sales. Broker Andrey Shestakov can organize inspections, surveys, and negotiate terms to suit your transaction needs.

## Questions and Answers

---

Q: What category does the 47 belong to? A: It's a sailing yacht configured as a catamaran on a robust fiberglass and plastic hull.

Q: What powers the yacht? A: The 47 is equipped with **two Yanmar inboard diesel** engines.

Q: What are the key dimensions? A: Length overall is **47 ft (14.33 m)** with a

beam of **23 ft (7.01 m)** .

Q: What materials are used in construction? A: The hull is a fiberglass and plastic, and the **deck** is **fiberglass** .

Q: How do I buy or list a 47? A: Reach out to **Andrey Shestakov** at **Shestakov Yacht Sales** for current availability, pricing guidance, and full-service transaction support on the 47 from Leopard Catamarans.

## Owner Experience Review

---

Owners regularly place the 47 by Leopard Catamarans into three practical roles: a dependable charter platform used by Moorings/Sunsail in the Caribbean, a family cruiser capable of extended passages and even circumnavigations, and a comfortable coastal boat ideal for social weekends. Commentators often praise the expansive cockpit-to-saloon flow and the functional galley, and note that both three- and four-cabin arrangements are common—many former charter yachts retain four cabins with en-suite heads. It's also reported that roughly 15 owner's version 47s were completed, offering a rarer, more private interior layout.

On the water, owners say the boat performs most naturally on a reach and will make comfortable passages around 8–10 knots when motoring, with relatively modest windward capability. Several firsthand accounts describe increased yawing and jerking in 15–25 knot winds with 6'–8' seas, and numerous reviews warn of bridgedeck slamming in short, choppy head seas. Performance is often described as somewhat underpowered relative to displacement, which aligns with the model's charter-oriented design priorities.

Thorough inspection of structure and systems is recommended for any prospective buyer of a 47. With balsa-cored hulls and decks, percussion tapping and moisture-meter surveys are widely advised to identify any core

issues. Many examples enter the market after charter service, so purchasers should budget for mechanical refreshes and cosmetic updates and should commission a detailed engine survey. Common maintenance items cited by owners include servicing watermakers and air-conditioning, and some owners have modified liferaft storage—either by glassing in or relocating lockers—to improve security.

## Pros and Cons

- Large cockpit/saloon social spaces and a practical galley suit liveaboard, weekend, and charter use.
- Three- and four-cabin layouts are roomy, and many ex-charter boats carry four cabins with en-suite heads.
- Feels best on a reach and will cruise comfortably around 8–10 knots when powered.
- Modest upwind ability and somewhat underpowered for its weight, reflecting its charter-oriented design.
- Noticeable bridgedeck slamming in short, choppy head seas.
- Balsa-cored construction requires careful percussion/moisture-meter inspection, and ex-charter boats often need mechanical/cosmetic refreshing and an engine survey.

## Comparison with Other Models

Model	LOA	Beam	Draft	Speed (Cruising/Max)	Gross Tonnage
47	47' 0" (14.33 m)	23' 0" (7.01 m)			
27	88' 0" (27 m)	19' 0" (6.05 m)	3' 4" (1.02 m)	26 kn / 33 kn	90
53 POWERCAT	53' 0" (16.18 m)	25' 0" (7.67 m)	10' 5" (3.17 m)	17 kn / 24 kn	
51 POWERCAT	51' 0" (15.54 m)	25' 0" (7.64 m)	10' 8" (3.25 m)	20 kn / 25 kn	
34	111' 0" (34.11 m)	24' 0" (7.35 m)	3' 11" (1.20 m)	36 kn / 40 kn	224

---

38	40' 0" (12.19 m)	21' 0" (6.40 m)	9' 10" (3 m)		
50	50' 0" (15.39 m)	26' 0" (7.92 m)	16' 5" (5 m)		
48	48' 0" (14.76 m)	25' 0" (7.64 m)	15' 10" (4.83 m)		
43 Powercat	42' 0" (13 m)	22' 0" (6.73 m)	10' 8" (3.25 m)	15.64 kn / 20.86 kn	
45	45' 0" (13.72 m)	24' 0" (7.37 m)	16' 2" (4.92 m)		

---

# SPECIFICATIONS

---

**LOA:**

47' 0" (14.33 m)

**Hull Material:**

Fiberglass and Plastic Yachts

**Engines:**

2

**Engine Type:**

Inboard

**Beam:**

23' 0" (7.01 m)

**Deck Material:**

Fiberglass

**Manufacturer:**

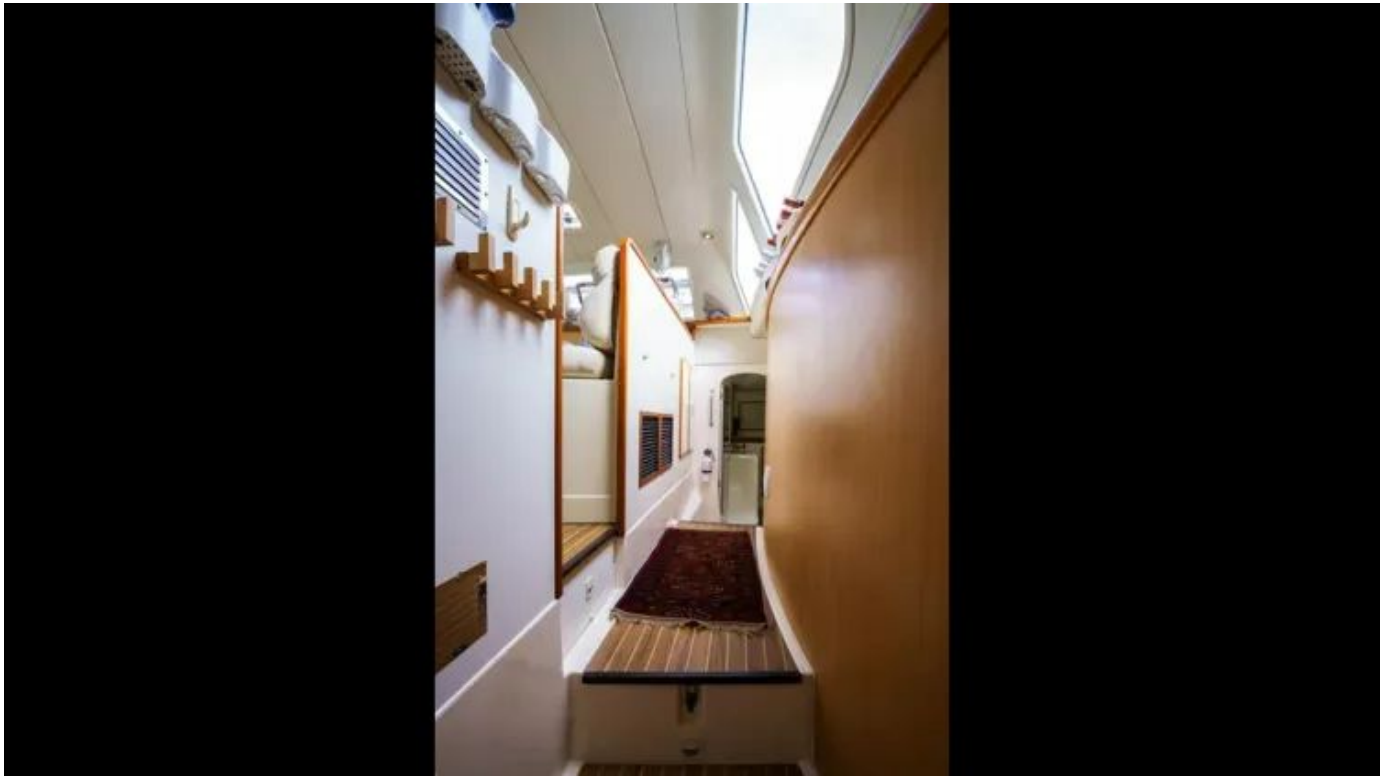
Yanmar

**Fuel Type:**

Diesel

# GALLERY











# CONTACTS

---

Shestakov Yacht Sales is a brokerage company specializing in the sale and service of yachts worldwide. The company offers services for buying and selling both new and used motor yachts, sailing vessels, and luxury superyachts. They also provide yacht registration, insurance, technical maintenance, crew selection, and charter organization services across the U.S., Canada, Latin America, the Caribbean, and the Bahamas.

The founder and lead broker of the company is Andrey Shestakov, a licensed and certified expert with extensive experience in marine engineering and shipbuilding.

The company has an extensive network of partnerships with major yacht manufacturers worldwide and provides services in multiple languages, including Russian, Ukrainian, Spanish, and English. The office is in Dania Beach, Florida, USA.

For more information and to view available yachts, you can visit the company's official website: <https://shestakovyachtsales.com>

## Contact details

---

**Phone:** +1(954)274-4435

**Email:** [andrey@shestakovyachtsales.com](mailto:andrey@shestakovyachtsales.com)

## Address

---



1380 Weeping Willow Way, Hollywood,  
Florida 33019