



SHESTAKOV

Yacht Sales

58 – LEOPARD CATAMARANS



Builder:

Leopard Catamarans

Model:

58

LOA:

58' 0" (17.68 m)

Beam:

27' 0" (8.46 m)

Max Draft:

19' 11" (6.08 m)

Water Capacity:

425 Gallons

Fuel Capacity:

238 Gallons

Total Heads:

4

Hull Material:

Fiberglass and Plastic Yachts

Deck Material:

Fiberglass

Hull Configuration:

Catamaran

Engines:

2

If you would like to buy a yacht **58 – Leopard Catamarans** or would like help, please call +1(954)274-4435 or visit shestakovyachtsales.com

TABLE OF CONTENTS

OVERVIEW	3
Selecting a 58	3
Features of the Model	3
Technical Specifications	4
Pricing and Ordering	4
Questions and Answers	4
Owner Experience Review	5
Pros and Cons	6
Comparison with Other Models	7
SPECIFICATIONS	8
GALLERY	9
CONTACTS	14

OVERVIEW

The Leopard Catamarans 58 is a large-format sailing yacht laid out as a twin-hull catamaran and constructed on a fiberglass build platform. Measuring 58 ft (17.68 m) overall with a 27 ft (8.46 m) beam and a max draft of 19.958 ft (6.0833 m), it provides substantial interior and deck volume ideal for extended cruising. Presented by Shestakov Yacht Sales with brokerage and representation by Andrey Shestakov.

Selecting a 58

Opting for the Leopard Catamarans 58 is a logical choice for owners seeking a roomy, live-aboard-capable platform for family cruising or a charter program. The wide 27 ft (8.46 m) beam magnifies both cockpit and interior living areas; twin inboard diesel engines and four heads make day-to-day life aboard convenient and comfortable. Shestakov Yacht Sales and broker Andrey Shestakov will assist with specification choices and guide you through the purchase process to match the boat to your cruising profile.

Features of the Model

- Twin inboard diesel propulsion by Yanmar (2 engines)
- Classification: sailing yacht with a twin-hull catamaran configuration
- Hull: fiberglass build; Deck: Fiberglass
- Four heads for versatile guest and owner arrangements
- Tankage sized for extended time aboard (water 425 gal; fuel 238 gal)
- Dimensions engineered for volume and seakeeping: LOA 58 ft (17.68 m), beam 27 ft (8.46 m), max draft 19.958 ft (6.0833 m)

Technical Specifications

- LOA: 58 ft (17.68 m)
- Beam: 27 ft (8.46 m)
- Max draft: 19.958 ft (6.0833 m)
- Hull configuration: twin-hull catamaran
- Hull material: fiberglass build
- Deck material: Fiberglass
- Engines: 2 x Yanmar; Type: Inboard; Fuel: Diesel
- Heads: 4
- Water capacity: 425 gal
- Fuel capacity: 238 gal

Pricing and Ordering

To obtain up-to-date pricing, confirm availability, or schedule inspections, sea trials, and surveys of the Leopard Catamarans 58, please contact Andrey Shestakov at Shestakov Yacht Sales. Our brokerage team will compare options and support you in securing the right sailing yacht in a twin-hull catamaran layout with a fiberglass build hull.

Questions and Answers

Q: What are the principal dimensions of the 58? A: The **LOA** measures 58 ft (17.68 m), the **beam** is 27 ft (8.46 m), and the **draft** is 19.958 ft (6.0833 m).

Q: What powers the yacht? A: Propulsion is provided by two **Yanmar** engines installed as **inboard** drives, running on **diesel** .

Q: How many heads and what are the tank capacities? A: The yacht is fitted with **4 heads** , a **water capacity** of 425 gal, and a **fuel capacity** of 238 gal.

Q: What are the hull and deck materials and the hull configuration? A: The hull uses a fiberglass build construction, the **deck material** is fiberglass, and the **configuration** is a twin-hull catamaran.

Q: How do I proceed with purchase or viewing? A: For **viewings**, offers, and transaction assistance on a sailing yacht such as the Leopard Catamarans 58, contact Andrey Shestakov at Shestakov Yacht Sales for bespoke support.

Owner Experience Review

Owners and delivery skippers characterize the 58 from Leopard Catamarans as fundamentally designed around generous living space and social interaction. The design centers on three separate exterior gathering areas—the aft cockpit, a forward cockpit, and an expansive flybridge—while the saloon and galley are arranged with a home-like feel, incorporating shore-sized appliances, abundant storage, and large windows that promote strong natural ventilation. Common layouts include bridgedeck-level double staterooms with en suite heads, and owner versions sometimes feature a full beam bridgedeck master. The model has been adapted for high-capacity charter operations as the Moorings 5800 with 3–6 cabin plans, and it also suits live aboard families and long-range voyaging.

Sailing impressions from experienced testers note a muted sense of speed at the flybridge helm, which can leave the helmsman feeling somewhat disconnected from the hulls. The yacht excels on a reach and tracks with dependable course-keeping, though it is not optimized for pointing high upwind and its tall freeboard and generous flybridge create noticeable windage. Under power, typical reported speeds are about 8.9 kt at 2,800 rpm and roughly 7 kt at 2,000 rpm, with many owners finding single engine, low rpm cruising most efficient at approximately 5.7 kt. Overall, the vessel covers passages consistently, but some owners report occasional

bridgedeck/nacelle slapping in short, choppy conditions.

Maintenance demands are above average for a yacht of this size and systems fit: multiple air-conditioning units, a watermaker, generator, and a substantial house bank charging arrangement all require ongoing attention, so reviewing battery, generator, and service histories is recommended. Forum and owner commentary also highlight challenges with engine and prop accessibility and note that surveys of used examples can sometimes miss issues; common powerplants (75–110 hp Yanmars) and choices between saildrive and V drive setups often mean professional engine and prop work becomes a significant budget item. One owner even referenced a diver quote of \$1,600 to remove and refit two props—an instructive figure for maintenance planning.

Pros and Cons

- Three distinct outdoor social zones combined with a very large saloon and galley offering strong natural ventilation.
- Adaptable interior plans for charter or owner use, including bridgedeck en suite cabins and an optional full beam master.
- Reliable reaching performance and practical motoring options, with approximate speeds of 7–9 kt at 2,000–2,800 rpm and an efficient single engine cruise near ~5.7 kt.
- Elevated operating and service requirements due to multiple systems; verify battery, generator, and service records.
- Reduced sensation of speed from the flybridge helm, which can create a disconnect between skipper and hull.
- Not optimized for upwind work and affected by substantial windage from its high freeboard and large flybridge.

Comparison with Other Models

Model	LOA	Beam	Draft	Speed (Cruising/Max)	Gross Tonnage
58	58' 0" (17.68 m)	27' 0" (8.46 m)	19' 11" (6.08 m)		
27	88' 0" (27 m)	19' 0" (6.05 m)	3' 4" (1.02 m)	26 kn / 33 kn	90
53 POWERCAT	53' 0" (16.18 m)	25' 0" (7.67 m)	10' 5" (3.17 m)	17 kn / 24 kn	
51 POWERCAT	51' 0" (15.54 m)	25' 0" (7.64 m)	10' 8" (3.25 m)	20 kn / 25 kn	
34	111' 0" (34.11 m)	24' 0" (7.35 m)	3' 11" (1.20 m)	36 kn / 40 kn	224
38	40' 0" (12.19 m)	21' 0" (6.40 m)	9' 10" (3 m)		
50	50' 0" (15.39 m)	26' 0" (7.92 m)	16' 5" (5 m)		
48	48' 0" (14.76 m)	25' 0" (7.64 m)	15' 10" (4.83 m)		
43 Powercat	42' 0" (13 m)	22' 0" (6.73 m)	10' 8" (3.25 m)	15.64 kn / 20.86 kn	
45	45' 0" (13.72 m)	24' 0" (7.37 m)	16' 2" (4.92 m)		

SPECIFICATIONS

LOA:

58' 0" (17.68 m)

Max Draft:

19' 11" (6.08 m)

Water Capacity:

425 Gallons

Total Heads:

4

Hull Material:

Fiberglass and Plastic Yachts

Hull Configuration:

Catamaran

Engines:

2

Engine Type:

Inboard

Beam:

27' 0" (8.46 m)

Fuel Capacity:

238 Gallons

Deck Material:

Fiberglass

Manufacturer:

Yanmar

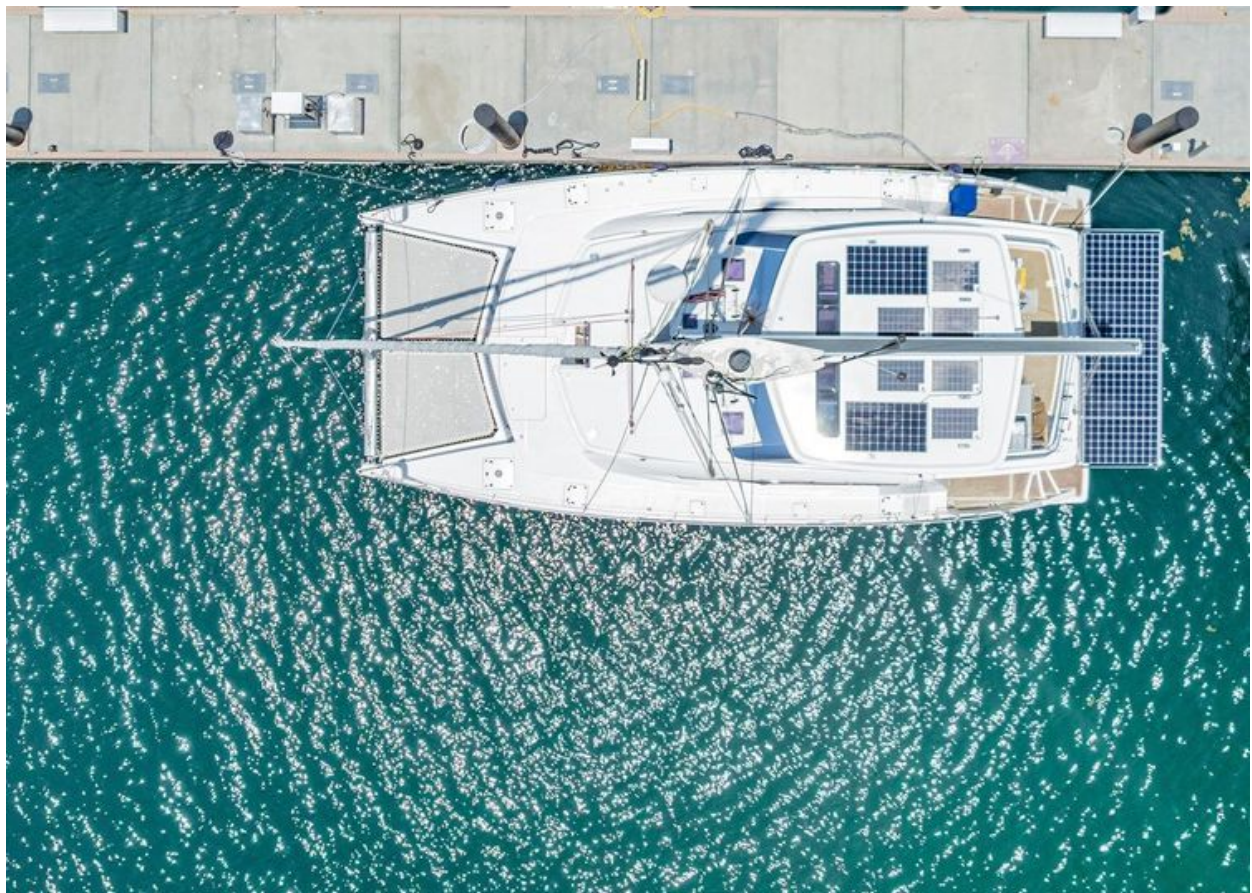
Fuel Type:

Diesel

GALLERY











CONTACTS

Shestakov Yacht Sales is a brokerage company specializing in the sale and service of yachts worldwide. The company offers services for buying and selling both new and used motor yachts, sailing vessels, and luxury superyachts. They also provide yacht registration, insurance, technical maintenance, crew selection, and charter organization services across the U.S., Canada, Latin America, the Caribbean, and the Bahamas.

The founder and lead broker of the company is Andrey Shestakov, a licensed and certified expert with extensive experience in marine engineering and shipbuilding.

The company has an extensive network of partnerships with major yacht manufacturers worldwide and provides services in multiple languages, including Russian, Ukrainian, Spanish, and English. The office is in Dania Beach, Florida, USA.

For more information and to view available yachts, you can visit the company's official website: <https://shestakovyachtsales.com>

Contact details

Phone: +1(954)274-4435

Email: andrey@shestakovyachtsales.com

Address



1380 Weeping Willow Way, Hollywood,
Florida 33019