



SHESTAKOV

Yacht Sales

## 84 ' FLY - MAIORA



**Builder:**

Maiora

**Model:**

84 ' Fly

**LOA:**

78' 0" (24 m)

**Min Draft:**

5' 7" (1.70 m)

**Beam:**

19' 0" (5.90 m)

**Max Draft:**

8' 0" (2.45 m)

**Gross Tonnage:**

56.7 Pounds

**Water Capacity:**

295.87 Gallons

**Fuel Capacity:**

999.89 Gallons

**Sleeps:**

8

**Total Heads:**

4

**Hull Material:**

Fiberglass and Plastic Yachts

If you would like to buy a yacht **84 ' FLY - Maiora** or would like help, please call +1(954)274-4435 or visit [shestakovyachtsales.com](http://shestakovyachtsales.com)

# TABLE OF CONTENTS

<b>OVERVIEW .....</b>	<b>3</b>
<b>Selecting the 84 &amp;#39; Fly .....</b>	<b>3</b>
<b>Features of the Model .....</b>	<b>3</b>
<b>Technical Specifications .....</b>	<b>4</b>
<b>Pricing and Ordering .....</b>	<b>4</b>
<b>Questions and Answers .....</b>	<b>4</b>
<b>Owner Experience Review .....</b>	<b>5</b>
<b>Pros and Cons .....</b>	<b>6</b>
<b>Comparison with Other Models .....</b>	<b>7</b>
<b>SPECIFICATIONS .....</b>	<b>8</b>
<b>GALLERY .....</b>	<b>9</b>
<b>CONTACTS .....</b>	<b>14</b>

## OVERVIEW

---

The 84 ' Fly from Maiora represents a polished entry in the motor yacht segment, built on a proven monohull platform. Its hull is constructed in fiberglass and plastic yachts, and the layout provides practical living spaces intended for comfortable long-range cruising.

### Selecting the 84 ' Fly

---

Opting for the 84 ' Fly is a decision to prioritize usable interior volume alongside seaworthy hull lines. With an LOA of 78 ft (24 m), a 19 ft (5.9 m) beam, and a variable draft between 5.577 and 8.038 ft (1.7–2.45 m), this monohull is set up to handle a range of coastal and island routes. Twin MTU inboard diesels supply dependable propulsion, while fuel and fresh water tanks of approximately 999.89 gal and 295.87 gal respectively allow for extended legs between resupply. The hull is penned by Roberto Del Re and the interiors by the Maiora Design Team, and the accommodation plan supports up to eight guests with four heads—making it suitable for family use or entertaining visitors.

### Features of the Model

---

- Category and build: A motor yacht within the wider motor yachts class, featuring a hull in fiberglass and plastic yachts with a fiberglass deck.
- Design pedigree: Hull design by Roberto Del Re paired with interior styling from the Maiora Design Team for a unified, modern onboard aesthetic.
- Propulsion and systems: Twin MTU inboard diesel engines offer durability, efficiency, and straightforward service access.
- Layout and comfort: Accommodation for 8 guests and 4 heads provides privacy and convenience for longer cruises.

- Dimensions for real-world cruising: 78 ft LOA, 19 ft beam, and a draft range that permits access to a wide selection of marinas and anchorages.

## Technical Specifications

---

- LOA: 78 ft (24 m)
- Beam: 19 ft (5.9 m)
- Draft: 5.577–8.038 ft (1.7–2.45 m)
- Gross Tonnage: 56.7
- Hull Configuration: Monohull
- Hull Material: fiberglass and plastic yachts
- Deck Material: Fiberglass
- Engines: 2 × MTU, Inboard, Diesel
- Accommodation: Sleeps 8
- Heads: 4
- Fuel Capacity: 999.89 gal
- Water Capacity: 295.87 gal
- Hull Designer: Roberto Del Re
- Interior Designer: Maiora Design Team

## Pricing and Ordering

---

For information on availability, pricing, and the process for acquiring the 84 ' Fly by Maiora, reach out to Andrey Shestakov at Shestakov Yacht Sales. Our brokerage team will walk you through specifications, customization options, and scheduling so you can move forward with clarity and confidence.

## Questions and Answers

---

Q: What defines the 84 ' Fly as a motor yacht within motor yachts? A: Its 78 ft

LOA, 19 ft beam, and monohull layout, along with twin MTU inboard diesel propulsion, provide the blend of internal volume and seakeeping expected from a contemporary motor yacht. The hull is built in fiberglass and plastic yachts, offering proven durability and manageable upkeep.

Q: Who are the designers behind the yacht? A: The hull was developed by Roberto Del Re, while the Maiora Design Team produced the interior environment—an arrangement that produces a consistent profile and a refined interior focused on **hull form** , **space planning** , and **finish** .

Q: How many people can stay aboard comfortably? A: The layout accommodates **8** guests and includes **4 heads** , creating a sensible configuration for families or small groups while preserving onboard privacy and circulation.

Q: What are the key dimensions and capacities for cruising? A: LOA **78 ft (24 m)** , beam **19 ft (5.9 m)** , draft **5.577–8.038 ft (1.7–2.45 m)** , fuel capacity **999.89 gal** , and water capacity **295.87 gal** —specifications that support flexible cruising plans.

Q: How do I begin the purchase process with expert guidance? A: Contact **Andrey Shestakov** at **Shestakov Yacht Sales** for personalized support regarding the 84 ' Fly by Maiora. The team will assist with configuration choices, optional equipment, and timing to ensure a smooth acquisition.

## Owner Experience Review

---

Owners and professional skippers often select the 84 ' Fly by Maiora because it balances family-oriented comfort with charter-capable layouts. Brokerage and charter entries regularly indicate four en-suite guest cabins plus dedicated crew quarters, a spacious main-deck salon, and an expansive flybridge equipped with helm, seating, and a wet bar. The planing GRP hull paired with a

relatively shallow draft is frequently called "Bahama friendly," making it suitable for day charters in the Mediterranean or Dubai as well as owner-operator use. Typical cruising speeds are reported around 22–24 kt, with top-end figures reaching the high-20s to low-30s depending on whether the vessel is fitted with MTU 10V/12V 2000-series engines or Caterpillar C32s. Interior joinery typically receives praise as the "fit and finish of a fine Italian motor yacht," and the multiple social decks perform well for entertaining both underway and at anchor.

From a servicing perspective, practical access and planned maintenance are important. Engine-room access is accomplished through a large stern hatch, and broker notes commonly reference headroom exceeding 6'4", which eases inspections and hands-on work. Sales histories across hulls often point to refit cycles—items such as hull repaint, galley upgrades, generator servicing, and exhaust/battery/hydraulic overhauls—and owners suggest higher ongoing expenses relative to smaller boats because professional MTU or Caterpillar maintenance is typically required. Well-cared-for examples are marketed as "well maintained, low hour, high speed, shallow draft," but prospective buyers should plan budgets conservatively and confirm the specific engine package and mechanical condition via survey and sea trial.

## Pros and Cons

---

- Spacious salon and generous social areas, plus a large flybridge with wet bar, make the yacht well suited to entertaining.
- The planing GRP hull with shallow draft supports Bahamas-style cruising and access to skinny-water anchorages.
- Performance is strong for the size: about a 22–24 kt cruise with top speeds in the high-20s to low-30s, contingent on the installed engines.
- Ongoing maintenance expenses tend to be above average due to the need for professional MTU/Caterpillar service and periodic generator, exhaust, and

hydraulic work.

- Actual performance depends on the fitted engine package, so verified speeds should be confirmed during a sea trial.
- Refit requirements such as hull paint or galley refreshes are commonly encountered and can increase total ownership costs.

## Comparison with Other Models

Model	LOA	Beam	Draft	Speed (Cruising/Max)	Gross Tonnage
Maiora 31dp	107' 0" (32.60 m)	22' 0" (6.85 m)	7' 3" (2.20 m)	23 kn / 26 kn	
30 Walkaround	100' 0" (30.50 m)	24' 0" (7.50 m)	6' 11" (2.10 m)	20 kn / 25 kn	190
84 ' Fly	78' 0" (24 m)	19' 0" (5.90 m)	5' 7" (1.70 m) – 8' 0" (2.45 m)		56.7
30 Convertible	100' 0" (30.61 m)	24' 0" (7.49 m)	6' 11" (2.11 m)	22 kn / 26 kn	205
23	76' 0" (23.30 m)	18' 0" (5.75 m)	5' 3" (1.60 m)	23 kn / 28 kn	80
FIPA 70' Flybridge	70' 0" (21.36 m)	18' 0" (5.56 m)	18' 10" (5.75 m)	22 kn / 27 kn	
Planing	97' 0" (29.57 m)	20' 0" (6.38 m)	14' 9" (4.50 m)	16 kn / 22 kn	118
Maiora 26.5	86' 0" (26.30 m)	18' 0" (5.58 m)	5' 11" (1.80 m)	23 kn / 26 kn	69
N/A	102' 0" (31.09 m)	22' 0" (6.78 m)		20 kn / 24 kn	

# SPECIFICATIONS

---

**LOA:**

78' 0" (24 m)

**Beam:**

19' 0" (5.90 m)

**Gross Tonnage:**

56.7 Pounds

**Fuel Capacity:**

999.89 Gallons

**Sleeps:**

8

**Hull Material:**

Fiberglass and Plastic Yachts

**Hull Configuration:**

Monohull

**Interior Designer:**

Maiora Design Team

**Engines:**

2

**Engine Type:**

Inboard

**Min Draft:**

5' 7" (1.70 m)

**Max Draft:**

8' 0" (2.45 m)

**Water Capacity:**

295.87 Gallons

**Total Heads:**

4

**Deck Material:**

Fiberglass

**Hull Designer:**

Roberto Del Re

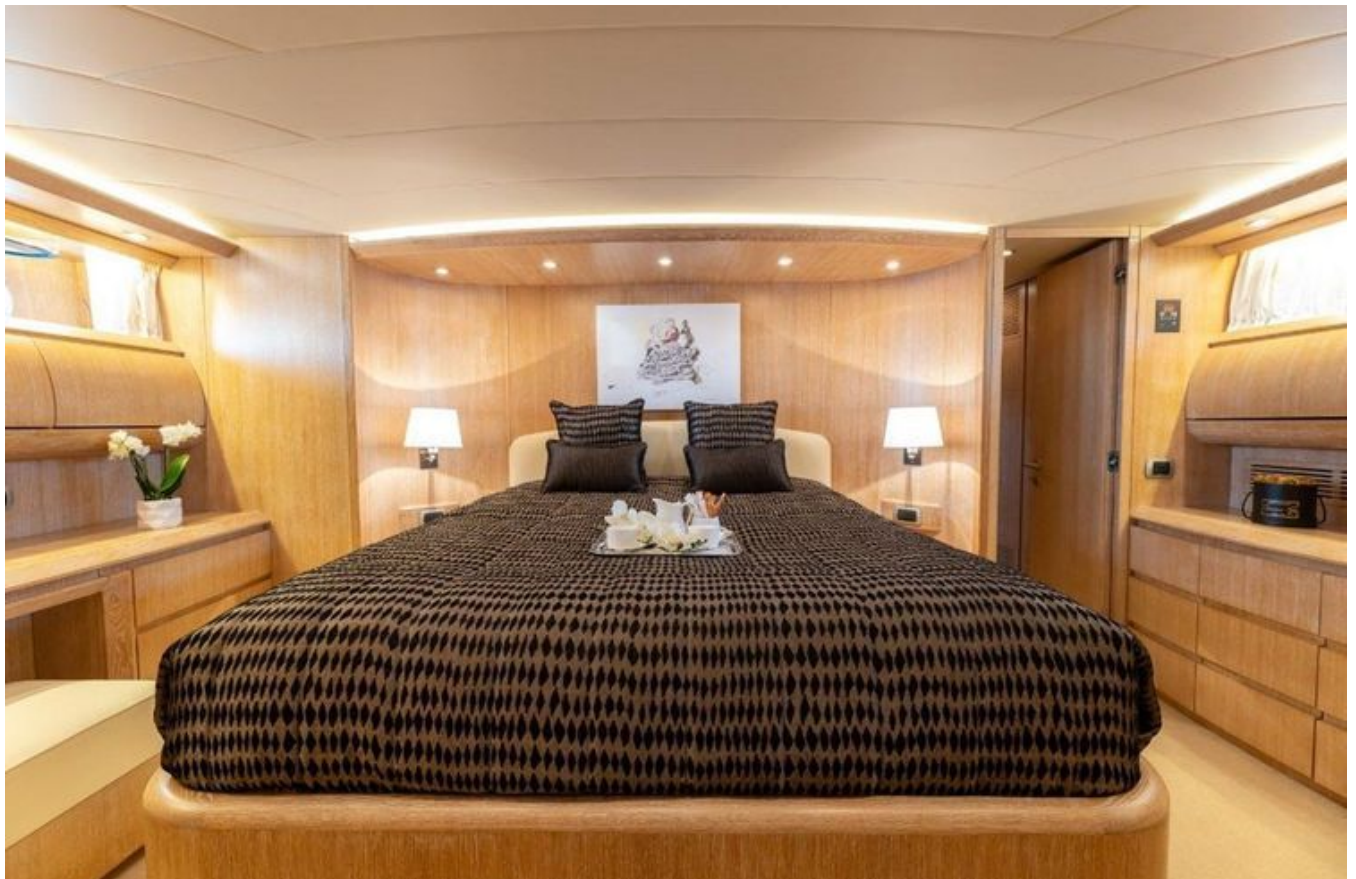
**Manufacturer:**

MTU

**Fuel Type:**

Diesel

# GALLERY











# CONTACTS

---

Shestakov Yacht Sales is a brokerage company specializing in the sale and service of yachts worldwide. The company offers services for buying and selling both new and used motor yachts, sailing vessels, and luxury superyachts. They also provide yacht registration, insurance, technical maintenance, crew selection, and charter organization services across the U.S., Canada, Latin America, the Caribbean, and the Bahamas.

The founder and lead broker of the company is Andrey Shestakov, a licensed and certified expert with extensive experience in marine engineering and shipbuilding.

The company has an extensive network of partnerships with major yacht manufacturers worldwide and provides services in multiple languages, including Russian, Ukrainian, Spanish, and English. The office is in Dania Beach, Florida, USA.

For more information and to view available yachts, you can visit the company's official website: <https://shestakovyachtsales.com>

## Contact details

---

**Phone:** +1(954)274-4435

**Email:** [andrey@shestakovyachtsales.com](mailto:andrey@shestakovyachtsales.com)

## Address

---



1380 Weeping Willow Way, Hollywood,  
Florida 33019