



SHESTAKOV

Yacht Sales

## 30 WALKAROUND - MAIORA



**Builder:**

Maiora

**Model:**

30 Walkaround

**LOA:**

100' 0" (30.50 m)

**Beam:**

24' 0" (7.50 m)

**Max Draft:**

6' 11" (2.10 m)

**Cruise Speed:**

20 kn / 23.02 mph

**Max Speed:**

25 kn / 28.77 mph

**Gross Tonnage:**

190 Pounds

**Water Capacity:**

554.76 Gallons

**Fuel Capacity:**

3698.41 Gallons

**Hull Material:**

Fiberglass and Plastic Yachts

**Deck Material:**

GRP

If you would like to buy a yacht **30 WALKAROUND - Maiora** or would like help, please call +1(954)274-4435 or visit [shestakovyachtsales.com](http://shestakovyachtsales.com)

---

# TABLE OF CONTENTS

---

**OVERVIEW ..... 3**

- Selecting a 30 Walkaround ..... 3
- Features of the Model ..... 3
- Technical Specifications ..... 4
- Pricing and Ordering ..... 4
- Questions and Answers ..... 4
- Owner Experience Review ..... 5
- Pros and Cons ..... 6
- Comparison with Other Models ..... 7

**SPECIFICATIONS ..... 8**

**GALLERY ..... 9**

**CONTACTS ..... 14**

## OVERVIEW

---

The 30 Walkaround from Maiora is a 100 ft (30.5 m) planing yacht marketed as a motor yacht within the broader motor yachts category. Built on a fiberglass and plastic foundation with GRP decks, it delivers confident 20–25 knot performance while offering a substantial 190 GT of internal volume. For guidance on configurations and purchase details, contact Shestakov Yacht Sales—broker Andrey Shestakov handles inquiries for this model.

## Selecting a 30 Walkaround

---

Opting for the 30 Walkaround means choosing a well-established motor yacht from Maiora that balances speed and onboard comfort. Important factors include its 100 ft (30.5 m) length overall and 24 ft (7.5 m) beam contributing to stable passage-making, a planing hull for nimble handling, and twin Caterpillar engines for dependable power. With a fuel capacity of 3,698.41 gal and fresh water capacity of 554.76 gal, the yacht is equipped for longer runs, and interiors by Owner Centro Stile Maiora emphasize the scope for personalized finishes.

## Features of the Model

---

- Category alignment: motor yacht in the motor yachts class
- Construction: fiberglass and plastic hull with GRP decks
- Hull type: Planing for responsive performance
- Propulsion: 2 Caterpillar engines; cruising at 20 kn (23.02 mph) and up to 25 kn (28.77 mph)
- Dimensions and volume: 100 ft (30.5 m) LOA, 24 ft (7.5 m) beam, 6.89 ft (2.1 m) draft, 190 GT
- Interior: Owner Centro Stile Maiora

## Technical Specifications

---

- Length overall (LOA): 100 ft (30.5 m)
- Beam: 24 ft (7.5 m)
- Max draft: 6.89 ft (2.1 m)
- Gross tonnage: 190 GT
- Cruising speed: 20 kn (23.02 mph)
- Maximum speed: 25 kn (28.77 mph)
- Engines: 2 × Caterpillar
- Hull configuration: Planing
- Hull material: fiberglass and plastic
- Deck material: GRP
- Fuel capacity: 3,698.41 gal
- Fresh water capacity: 554.76 gal
- Category: motor yachts; Subcategory: motor yacht

## Pricing and Ordering

---

For up-to-date pricing, availability, and assistance with ordering or purchasing the 30 Walkaround from Maiora, contact Shestakov Yacht Sales. Broker Andrey Shestakov will provide a bespoke plan, timeline, and support with all transaction documentation.

## Questions and Answers

---

Q: What type of yacht is the 30 Walkaround? A: It is a motor yacht in the motor yachts segment built by Maiora on a fiberglass and plastic platform.

Q: What are the performance figures? A: The 30 Walkaround cruises at about 20 kn (23.02 mph) with a top speed near 25 kn (28.77 mph), achieved by its

planing hull form.

Q: What are the key dimensions and volume? A: The yacht measures 100 ft (30.5 m) LOA, has a 24 ft (7.5 m) beam, a maximum draft of 6.89 ft (2.1 m), and a gross tonnage of 190 GT.

Q: What powers the yacht and how far can it go? A: Propulsion comes from 2 Caterpillar engines. With a fuel capacity of 3,698.41 gal and 554.76 gal of fresh water, the vessel is equipped for extended passages (actual range varies with conditions and speed).

Q: Who can help me purchase this yacht? A: Contact Shestakov Yacht Sales—broker Andrey Shestakov will assist with pricing, specification checks, and the complete ordering or brokerage process for the 30 Walkaround by Maiora.

## Owner Experience Review

---

Prospective owners looking at the 30 Walkaround from Maiora often highlight the expansive deck areas and the flexibility those spaces provide. The model is framed primarily for private long-distance cruising in regions like the Mediterranean, with published long-range numbers typically in the 1,150–1,500 nm band at roughly 10 knots. It is also presented as suitable for charter operations and fully crewed hospitality, with deck arrangements supporting family-centric entertaining: a very large flybridge (reported around 120 m<sup>2</sup>), continuous walkaround side decks, and an emphasis on smooth indoor/outdoor transitions. Several configurations offer five cabins, frequently placing the owner's suite on the main deck and including a full-beam midships VIP in some layouts.

On the water, owners and press accounts describe a fast-cruising planing hull commonly fitted with dual CAT C32 diesels, producing a top speed in the 23–25

knot range and a comfortable fast cruise just over 20 knots. When operated at displacement-style speeds near 10 knots, the yacht's extended-range capability becomes prominent. There are relatively few long-form, owner-published sea-keeping diaries, so most expectations derive from published specifications and broker or editorial reports rather than an abundance of forum-sourced first-hand narratives.

Ownership involves the typical considerations for a semi-custom superyacht of this scale: propulsion is usually Caterpillar or MTU, requiring OEM-specified maintenance intervals and superyacht-level upkeep costs. Fit-out and systems routing can vary significantly between hulls, which impacts service access and long-term serviceability—buyers should verify system layouts on any specific hull. Optional features seen on some builds include an aft beach club and a transverse tender garage; prospective purchasers should confirm which options are fitted to the vessel under consideration.

## Pros and Cons

---

- Long-range capability of roughly 1,150–1,500 nm at about 10 knots supports extended passages.
- Fast-cruising planing hull with a typical fast cruise just above 20 knots and reported top speed around 23–25 knots.
- Available five-cabin layouts with a main-deck owner's suite, a full-beam midships VIP, and a very large flybridge with walkaround decks.
- Superyacht-level ownership and service costs for CAT/MTU propulsion and systems.
- Semi-custom nature means equipment layout and maintenance access vary by hull and require careful survey.
- Limited publicly shared owner sea-keeping anecdotes, so expectations rely more on specs and broker or press reports.

## Comparison with Other Models

Model	LOA	Beam	Draft	Speed (Cruising/ Max)	Gross Tonnage
Maiora 31dp	107' 0" (32.60 m)	22' 0" (6.85 m)	7' 3" (2.20 m)	23 kn / 26 kn	
30 Walkaround	100' 0" (30.50 m)	24' 0" (7.50 m)	6' 11" (2.10 m)	20 kn / 25 kn	190
84 ' Fly	78' 0" (24 m)	19' 0" (5.90 m)	5' 7" (1.70 m) – 8' 0" (2.45 m)		56.7
30 Convertible	100' 0" (30.61 m)	24' 0" (7.49 m)	6' 11" (2.11 m)	22 kn / 26 kn	205
23	76' 0" (23.30 m)	18' 0" (5.75 m)	5' 3" (1.60 m)	23 kn / 28 kn	80
FIPA 70' Flybridge	70' 0" (21.36 m)	18' 0" (5.56 m)	18' 10" (5.75 m)	22 kn / 27 kn	
Planing	97' 0" (29.57 m)	20' 0" (6.38 m)	14' 9" (4.50 m)	16 kn / 22 kn	118
Maiora 26.5	86' 0" (26.30 m)	18' 0" (5.58 m)	5' 11" (1.80 m)	23 kn / 26 kn	69
N/A	102' 0" (31.09 m)	22' 0" (6.78 m)		20 kn / 24 kn	

# SPECIFICATIONS

---

**LOA:**

100' 0" (30.50 m)

**Max Draft:**

6' 11" (2.10 m)

**Cruise Speed:**

20 kn / 23.02 mph

**Gross Tonnage:**

190 Pounds

**Fuel Capacity:**

3698.41 Gallons

**Hull Material:**

Fiberglass and Plastic Yachts

**Hull Configuration:**

Planing

**Engines:**

2

**Beam:**

24' 0" (7.50 m)

**Max Speed:**

25 kn / 28.77 mph

**Water Capacity:**

554.76 Gallons

**Deck Material:**

GRP

**Interior Designer:**

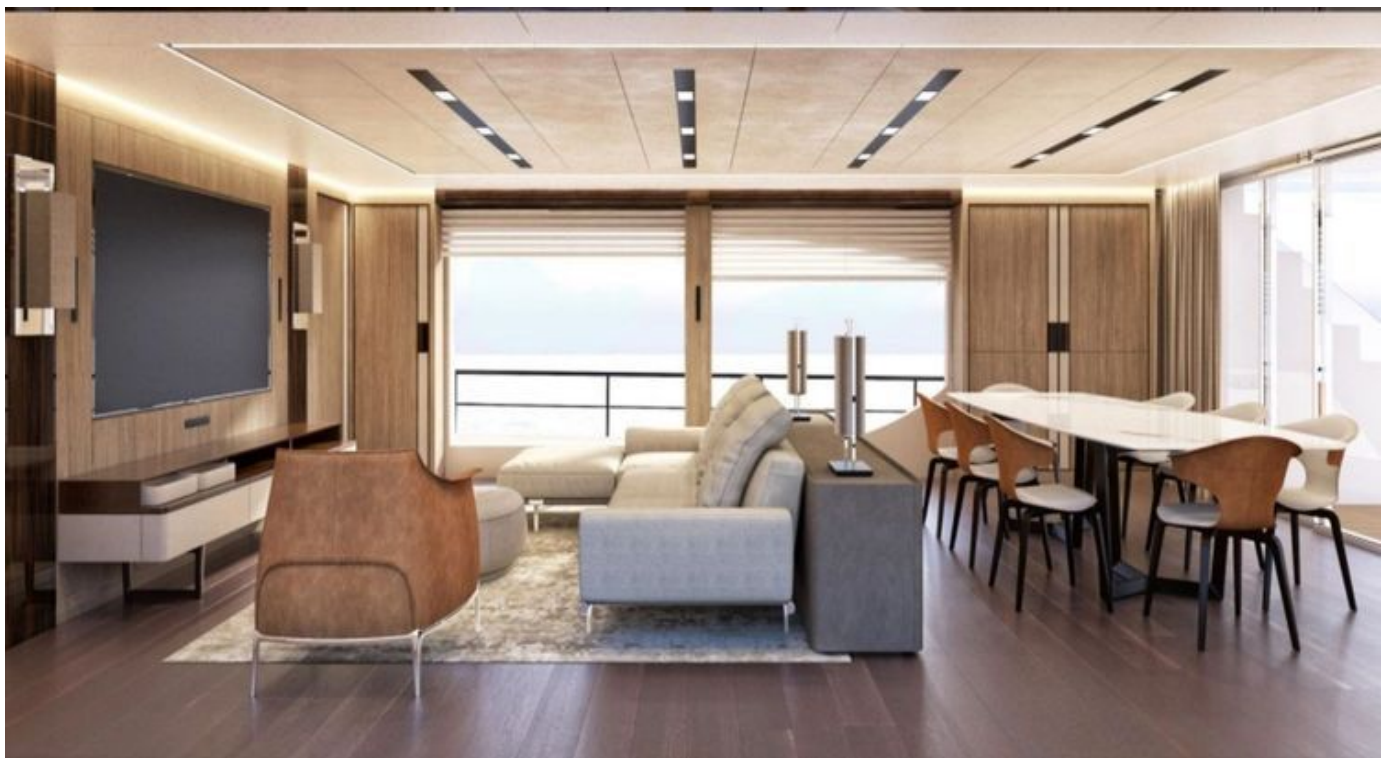
Owner Centro Stile Maiora

**Manufacturer:**

Caterpillar

# GALLERY











# CONTACTS

---

Shestakov Yacht Sales is a brokerage company specializing in the sale and service of yachts worldwide. The company offers services for buying and selling both new and used motor yachts, sailing vessels, and luxury superyachts. They also provide yacht registration, insurance, technical maintenance, crew selection, and charter organization services across the U.S., Canada, Latin America, the Caribbean, and the Bahamas.

The founder and lead broker of the company is Andrey Shestakov, a licensed and certified expert with extensive experience in marine engineering and shipbuilding.

The company has an extensive network of partnerships with major yacht manufacturers worldwide and provides services in multiple languages, including Russian, Ukrainian, Spanish, and English. The office is in Dania Beach, Florida, USA.

For more information and to view available yachts, you can visit the company's official website: <https://shestakovyachtsales.com>

## Contact details

---

**Phone:** +1(954)274-4435

**Email:** [andrey@shestakovyachtsales.com](mailto:andrey@shestakovyachtsales.com)

## Address

---



1380 Weeping Willow Way, Hollywood,  
Florida 33019