



SHESTAKOV

Yacht Sales

## 105 SPORT – MANGUSTA



**Builder:**

Mangusta

**Model:**

105 Sport

**LOA:**

105' 0" (32 m)

**Min Draft:**

13' 11" (4.25 m)

**Beam:**

23' 0" (7.01 m)

**Max Draft:**

18' 10" (5.75 m)

**Fuel Capacity:**

3698 Gallons

**Hull Material:**

Fiberglass and Plastic Yachts

**Deck Material:**

Fiberglass

**Engines:**

2

**Manufacturer:**

MTU

**Engine Type:**

Inboard

If you would like to buy a yacht **105 SPORT – Mangusta** or would like help, please call +1(954)274-4435 or visit [shestakovyachtsales.com](http://shestakovyachtsales.com)

---

# TABLE OF CONTENTS

---

<b>OVERVIEW .....</b>	<b>3</b>
<b>Selecting a 105 Sport .....</b>	<b>3</b>
<b>Features of the Model .....</b>	<b>3</b>
<b>Technical Specifications .....</b>	<b>3</b>
<b>Pricing and Ordering .....</b>	<b>4</b>
<b>Questions and Answers .....</b>	<b>4</b>
<b>Owner Experience Review .....</b>	<b>5</b>
<b>Pros and Cons .....</b>	<b>6</b>
<b>Comparison with Other Models .....</b>	<b>6</b>
<b>SPECIFICATIONS .....</b>	<b>8</b>
<b>GALLERY .....</b>	<b>9</b>
<b>CONTACTS .....</b>	<b>14</b>

## OVERVIEW

---

Discover the 105 Sport from Mangusta—an elegant motor yacht within the motor yachts category, built on a sturdy fiberglass hull. Offered through Shestakov Yacht Sales with broker Andrey Shestakov representing this model.

### Selecting a 105 Sport

---

If your priority is a twin-engine performance yacht, the 105 Sport offers **2** MTU inboard diesel powerplants and a substantial 23 ft beam to promote confident stability and handling. Its generous 3,698 gal fuel tanks enable extended passages, while the fiberglass deck over a fiberglass hull structure provides a durable, low-maintenance base. Reach out to Andrey Shestakov at Shestakov Yacht Sales for advice on whether this model fits your needs, to arrange inspections, and to check current availability.

### Features of the Model

---

- Classification: a motor yacht positioned within the motor yachts segment
- Construction: fiberglass hull with a fiberglass deck
- Propulsion: 2 MTU inboard diesel engines for dependable power delivery
- Dimensions: 105 ft (32 m) LOA and 23 ft (7.01 m) beam for generous platform and stability
- Draft range: 13.944 ft (4.25 m) min to 18.865 ft (5.75 m) max
- Fuel capacity: 3,698 gal for extended cruising flexibility

### Technical Specifications

---

- LOA: 105 ft (32 m)

- Beam: 23 ft (7.01 m)
- Draft (min): 13.944 ft (4.25 m)
- Draft (max): 18.865 ft (5.75 m)
- Engines: 2 x MTU
- Engine type: Inboard
- Fuel: Diesel
- Hull: fiberglass and plastic construction
- Deck: Fiberglass
- Fuel capacity: 3,698 gal

## Pricing and Ordering

---

For up-to-date pricing, current availability, and to book a survey or viewing, contact Andrey Shestakov at Shestakov Yacht Sales. Our brokerage coordinates appraisals, negotiations, paperwork, survey facilitation, and delivery planning for the 105 Sport by Mangusta.

## Questions and Answers

---

Q: What is the 105 Sport and who builds it? A: The **model** 105 Sport is manufactured by the **builder** Mangusta. It is categorized as a motor yacht within the broader motor yachts class and rides on a fiberglass hull.

Q: What engines power the yacht? A: The 105 Sport is fitted with **2 MTU inboard diesel** engines, a package known for solid performance and service support across cruising profiles.

Q: What are the overall dimensions? A: The yacht measures an **LOA** of 105 ft (32 m) with a **beam** of 23 ft (7.01 m), providing substantial onboard volume for living and entertaining.

Q: What are the draft and fuel capacity figures? A: The **draft** varies from 13.944

ft (4.25 m) minimum up to 18.865 ft (5.75 m) maximum, and the **fuel capacity** totals 3,698 gal.

Q: How do I get pricing and start the purchase process? A: For **pricing** , **availability** , and guidance on next steps, contact **Andrey Shestakov** at **Shestakov Yacht Sales** . We will organize viewings, surveys, and manage the documentation required to acquire your 105 Sport.

## Owner Experience Review

---

Owners tend to choose the 105 Sport from Mangusta for private or family cruising, frequently running weekend programs with an owner-plus-crew configuration. The model commonly features a four-cabin arrangement plus dedicated crew quarters. Many listings are early to mid 2000s builds, and this model is more often seen in brokerage inventories than in large commercial charter fleets. Fit-outs vary significantly between individual vessels, with numerous older hulls receiving interior refreshes or refits.

Underway, the 105 Sport is a planing, performance-oriented yacht that typically cruises in the high 20s (roughly mid 20s up to about 30 knots) with reported top speeds in the low 30s, depending on the specific engine and drive setup. The helm feel is energetic and responsive; owners report that jet or surface drive variants can be nervy at low speeds, which makes close-quarters maneuvers and docking tasks best handled by an experienced pilot and crew. Sea-keeping impressions are mixed: the yacht performs well when running at speed, but it does not offer the same placid ride as heavier displacement designs, so experienced or professional crew are recommended for offshore work.

Accommodations and social spaces earn positive remarks—wide cockpits and open entertaining areas, often complemented by sky roof or bridge social zones, make this model attractive for guests. The midship owner’s cabin layout

is a recurring feature. By contrast, owners note that crew service areas and engine access can feel constrained compared with guest spaces. Maintenance demands are notable: many boats are fitted with MTU 12V 396 series engines that require specialist attention, and jet or surface drive installations call for dedicated servicing; compact engine rooms, elevated operating costs, and the need to source experienced engineers are common concerns. Individual examples differ by refit history and drive configuration, but these observations are frequent across owner and broker feedback.

## Pros and Cons

- High-speed planing performance with typical cruise in the high 20s and reported tops in the low 30s.
- Social cockpit and open entertaining zones paired with a 4-cabin plus crew layout suited to family use and owner-with-crew operation.
- Often found on the brokerage market, with many examples showing refreshed interiors and varied custom finishes.
- Low-speed handling can be twitchy on jet/surface drive setups, demanding experienced hands for docking.
- Sea-keeping is less forgiving than heavier displacement yachts, so skilled crew are advisable for offshore passages.
- Running and maintenance costs are significant due to MTU power and specialist jet/surface drive servicing, with tight engine-room access.

## Comparison with Other Models

Model	LOA	Beam	Draft	Speed (Cruising/Max)	Gross Tonnage
105 Sport	105' 0" (32 m)	23' 0" (7.01 m)	13' 11" (4.25 m) – 18' 10" (5.75 m)		

92	92' 0" (28.30 m)	21' 0" (6.60 m)	5' 3" (1.60 m)	24 kn / 30 kn	
Gransport 33m	109' 0" (33.30 m)	24' 0" (7.39 m)	19' 8" (6 m) – 20' 6" (6.25 m)	21 kn / 25 kn	247
MANGUSTA 130	130' 0" (39.62 m)	25' 0" (7.76 m)	4' 5" (1.35 m)	28 kn / 40 kn	291
MANGUSTA 108	109' 0" (33.48 m)	23' 0" (7.12 m)	4' 3" (1.30 m) – 6' 11" (2.10 m)	25 kn / 33 kn	181
Mangusta 165	163' 0" (49.90 m)	30' 0" (9.20 m)	6' 3" (1.90 m)	25 kn / 38.5 kn	488
105	105' 0" (32 m)	22' 0" (6.91 m)	16' 5" (5 m)	24 kn / 32 kn	
72 Open	72' 0" (21.95 m)	18' 0" (5.64 m)	10' 5" (3.17 m) – 11' 6" (3.50 m)	30 kn / 36 kn	30
72	75' 0" (22.90 m)	18' 0" (5.55 m)	4' 11" (1.50 m)	25 kn / 35 kn	
33 GranSport	109' 0" (33.22 m)	24' 0" (7.39 m)	20' 3" (6.17 m)	21 kn / 26 kn	228

# SPECIFICATIONS

---

**LOA:**

105' 0" (32 m)

**Beam:**

23' 0" (7.01 m)

**Fuel Capacity:**

3698 Gallons

**Hull Material:**

Fiberglass and Plastic Yachts

**Engines:**

2

**Engine Type:**

Inboard

**Min Draft:**

13' 11" (4.25 m)

**Max Draft:**

18' 10" (5.75 m)

**Deck Material:**

Fiberglass

**Manufacturer:**

MTU

**Fuel Type:**

Diesel

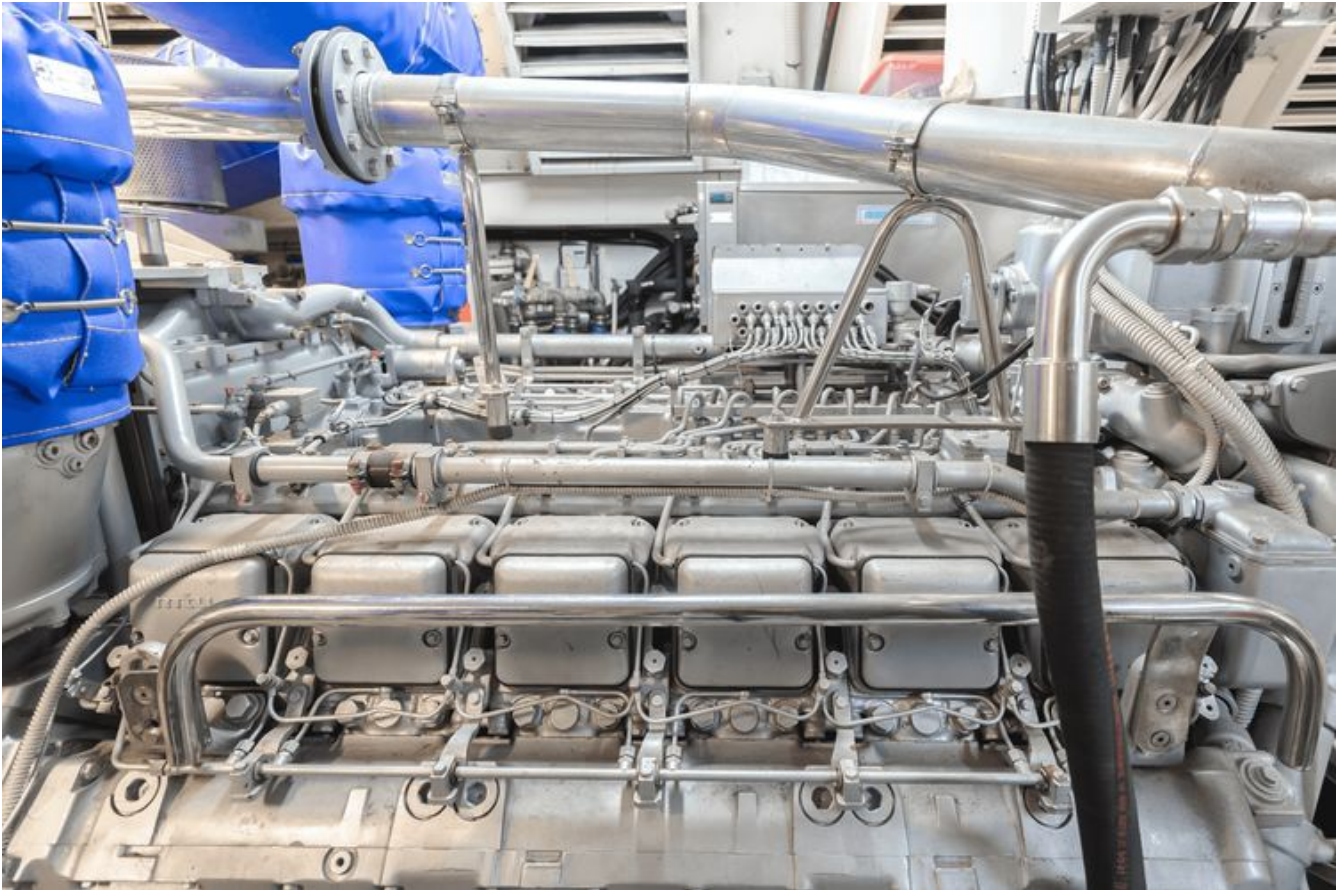
# GALLERY











# CONTACTS

---

Shestakov Yacht Sales is a brokerage company specializing in the sale and service of yachts worldwide. The company offers services for buying and selling both new and used motor yachts, sailing vessels, and luxury superyachts. They also provide yacht registration, insurance, technical maintenance, crew selection, and charter organization services across the U.S., Canada, Latin America, the Caribbean, and the Bahamas.

The founder and lead broker of the company is Andrey Shestakov, a licensed and certified expert with extensive experience in marine engineering and shipbuilding.

The company has an extensive network of partnerships with major yacht manufacturers worldwide and provides services in multiple languages, including Russian, Ukrainian, Spanish, and English. The office is in Dania Beach, Florida, USA.

For more information and to view available yachts, you can visit the company's official website: <https://shestakovyachtsales.com>

## Contact details

---

**Phone:** +1(954)274-4435

**Email:** [andrey@shestakovyachtsales.com](mailto:andrey@shestakovyachtsales.com)

## Address

---



1380 Weeping Willow Way, Hollywood,  
Florida 33019