



SHESTAKOV

Yacht Sales

## 92 – MANGUSTA



**Builder:**

Mangusta

**Model:**

92

**LOA:**

92' 0" (28.30 m)

**Min Draft:**

5' 3" (1.60 m)

**Beam:**

21' 0" (6.60 m)

**Max Draft:**

5' 3" (1.60 m)

**Cruise Speed:**

24 kn / 27.62 mph

**Max Speed:**

30 kn / 34.52 mph

**Water Capacity:**

369.84 Gallons

**Fuel Capacity:**

1849.2 Gallons

**Sleeps:**

10

**Total Heads:**

4

If you would like to buy a yacht **92 – Mangusta** or would like help, please call +1(954)274-4435 or visit [shestakovyachtsales.com](http://shestakovyachtsales.com)

---

# TABLE OF CONTENTS

---

<b>OVERVIEW .....</b>	<b>3</b>
<b>Selecting a 92 .....</b>	<b>3</b>
<b>Features of the Model .....</b>	<b>3</b>
<b>Technical Specifications .....</b>	<b>4</b>
<b>Pricing and Ordering .....</b>	<b>4</b>
<b>Questions and Answers .....</b>	<b>4</b>
<b>Owner Experience Review .....</b>	<b>5</b>
<b>Pros and Cons .....</b>	<b>6</b>
<b>Comparison with Other Models .....</b>	<b>6</b>
<b>SPECIFICATIONS .....</b>	<b>8</b>
<b>GALLERY .....</b>	<b>9</b>
<b>CONTACTS .....</b>	<b>14</b>

## OVERVIEW

---

The 92 from Mangusta is a 92 ft (28.3 m) open-layout motor yacht positioned in the premium motor yachts segment. Built on a fiberglass and plastic hull with a fiberglass deck, it combines a 24-knot cruising pace and a 30-knot top speed with sleeping space for 10 guests and berths for 4 crew, delivering a balanced mix of rapid coastal passage-making and onboard comfort.

## Selecting a 92

---

If your brief calls for a high-speed motor yacht that still offers generous living areas and a shallow 1.6 m (5.249 ft) draft for versatile cruising, the 92 is an ideal candidate. Its 21 ft (6.6 m) beam creates roomy interiors suitable for family use or guest charters, while twin MTU inboard diesels provide the power to reach planing speeds around 24 knots. For assistance with available listings, surveys, and negotiating a purchase, contact Andrey Shestakov and the team at Shestakov Yacht Sales.

## Features of the Model

---

- Hull and deck dimensions tuned for performance and comfort: LOA 92 ft (28.3 m); beam 21 ft (6.6 m); draft 5.249 ft (1.6 m)
- Operational performance: 24 kn cruising speed (27.62 mph), 30 kn maximum (34.52 mph)
- Propulsion package: twin MTU inboard engines powered by diesel
- Guest and crew arrangements: accommodates 10 guests; 4 heads; separate crew berths for 4
- Tankage: fuel capacity 1,849.2 gal; fresh water 369.84 gal
- Construction details: built on a fiberglass and plastic hull with a fiberglass deck

## Technical Specifications

---

- Builder: Mangusta
- Model: 92
- Classification: motor yacht within the motor yachts class
- Hull type: fiberglass and plastic yachts
- Deck material: Fiberglass
- LOA: 92 ft (28.3 m)
- Beam: 21 ft (6.6 m)
- Draft (min/max): 5.249 ft (1.6 m)
- Engines: 2 x MTU, Inboard, Diesel
- Cruising speed: 24 kn (27.62 mph)
- Maximum speed: 30 kn (34.52 mph)
- Accommodation summary: sleeps 10; heads 4; crew berths 4
- Fuel capacity: 1,849.2 gal
- Fresh water capacity: 369.84 gal

## Pricing and Ordering

---

To learn about current availability, pricing estimates, or to schedule a private viewing of the 92, please get in touch with Andrey Shestakov at Shestakov Yacht Sales. Our brokerage will arrange showings, handle offer management, and support you through survey, sea trial, and the closing paperwork specific to the motor yachts market.

## Questions and Answers

---

Q: What kind of yacht is the 92 by Mangusta? A: It's an open-style motor yacht marketed in the premium motor yachts segment, constructed on a robust fiberglass and plastic hull.

Q: What are the speeds of the model? A: The 92 achieves a **cruising speed** of 24 knots (27.62 mph) and a **maximum speed** of 30 knots (34.52 mph).

Q: How many people can stay aboard? A: The yacht **sleeps** 10 guests and includes 4 **heads** , with dedicated **crew** accommodations for 4.

Q: What is the draft and why is it useful? A: The **draft** measures 5.249 ft (1.6 m), allowing access to shallower marinas and anchorages while still supporting the vessel's performance characteristics.

Q: What engines and fuel does it use? A: Propulsion is provided by twin **MTU inboard** engines running on **diesel** , matching the performance expectations for this class of motor yacht. For available listings and further technical details, contact Andrey Shestakov at Shestakov Yacht Sales.

## Owner Experience Review

---

Owners appreciate the 92 by Mangusta for its practical versatility: a lower deck laid out for family use with four guest cabins — including a full-beam aft owner's stateroom — plus dedicated crew quarters, and an airy saloon where a large retractable section effectively merges interior and exterior living. The integrated tender garage and space for jet-skis suit short coastal hops and day outings, and several hulls have seen commercial use, often listed for Riviera-style charter operations. Daily running is made simpler by a galley and crew circulation plan that keeps service routes discreet and efficient.

Underway, the planing hull and performance focus deliver the behaviour owners expect: published cruising speeds around 22–23 knots with reported top-end velocities in the 29–32+ knot bracket. Captains report lively handling and brisk acceleration driven by the twin MTU package, providing a confident and sporty ride.

Maintenance patterns are consistently noted: KaMeWa waterjets appear as

recurring service items, with major 10 year overhauls and pipework commonly referenced; MTU main engines follow defined heavy W service cycles and eventual overhauls; and fitted gyro/Smart Gyro stabilisers introduce separate maintenance requirements. The engine room is frequently described as roomy and easily accessible, which simplifies servicing, and well-maintained examples are often advertised as being kept in excellent condition by attentive ownership.

## Pros and Cons

- Planing hull with sporty handling and strong acceleration; published cruise roughly 22–23 knots and reported top speeds around 29–32+ knots.
- Accommodation and layout suit family use and charter work, featuring four guest cabins including a full-beam aft owner stateroom plus crew quarters.
- Open-plan saloon with a large retractable section that enhances indoor/outdoor flow for entertaining and day use.
- KaMeWa waterjets demand recurring maintenance, with major 10-year services and associated pipework noted in listings.
- MTU main engines require scheduled heavy W-services and periodic overhauls.
- Gyro stabiliser systems, where installed, add additional maintenance tasks and costs.

## Comparison with Other Models

Model	LOA	Beam	Draft	Speed (Cruising/Max)	Gross Tonnage
92	92' 0" (28.30 m)	21' 0" (6.60 m)	5' 3" (1.60 m)	24 kn / 30 kn	
Gransport 33m	109' 0" (33.30 m)	24' 0" (7.39 m)	19' 8" (6 m) – 20' 6" (6.25 m)	21 kn / 25 kn	247

MANGUSTA 130	130' 0" (39.62 m)	25' 0" (7.76 m)	4' 5" (1.35 m)	28 kn / 40 kn	291
MANGUSTA 108	109' 0" (33.48 m)	23' 0" (7.12 m)	4' 3" (1.30 m) – 6' 11" (2.10 m)	25 kn / 33 kn	181
Mangusta 165	163' 0" (49.90 m)	30' 0" (9.20 m)	6' 3" (1.90 m)	25 kn / 38.5 kn	488
105	105' 0" (32 m)	22' 0" (6.91 m)	16' 5" (5 m)	24 kn / 32 kn	
72 Open	72' 0" (21.95 m)	18' 0" (5.64 m)	10' 5" (3.17 m) – 11' 6" (3.50 m)	30 kn / 36 kn	30
72	75' 0" (22.90 m)	18' 0" (5.55 m)	4' 11" (1.50 m)	25 kn / 35 kn	
33 GranSport	109' 0" (33.22 m)	24' 0" (7.39 m)	20' 3" (6.17 m)	21 kn / 26 kn	228
105 Sport	105' 0" (32 m)	23' 0" (7.01 m)	13' 11" (4.25 m) – 18' 10" (5.75 m)		

# SPECIFICATIONS

---

**LOA:**

92' 0" (28.30 m)

**Beam:**

21' 0" (6.60 m)

**Cruise Speed:**

24 kn / 27.62 mph

**Water Capacity:**

369.84 Gallons

**Sleeps:**

10

**Crew Berths:**

4

**Hull Material:**

Fiberglass and Plastic Yachts

**Engines:**

2

**Engine Type:**

Inboard

**Min Draft:**

5' 3" (1.60 m)

**Max Draft:**

5' 3" (1.60 m)

**Max Speed:**

30 kn / 34.52 mph

**Fuel Capacity:**

1849.2 Gallons

**Total Heads:**

4

**Deck Material:**

Fiberglass

**Manufacturer:**

MTU

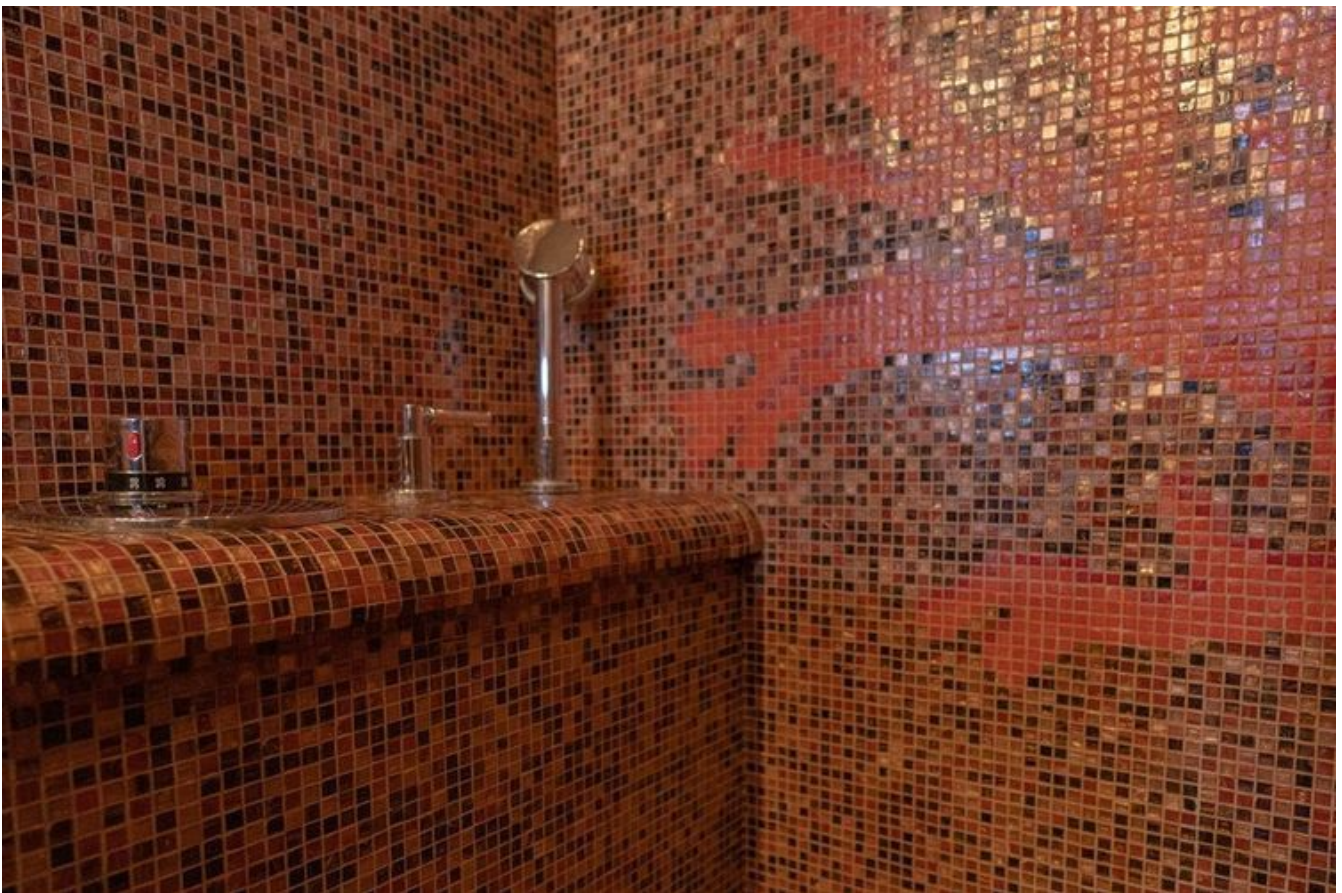
**Fuel Type:**

Diesel

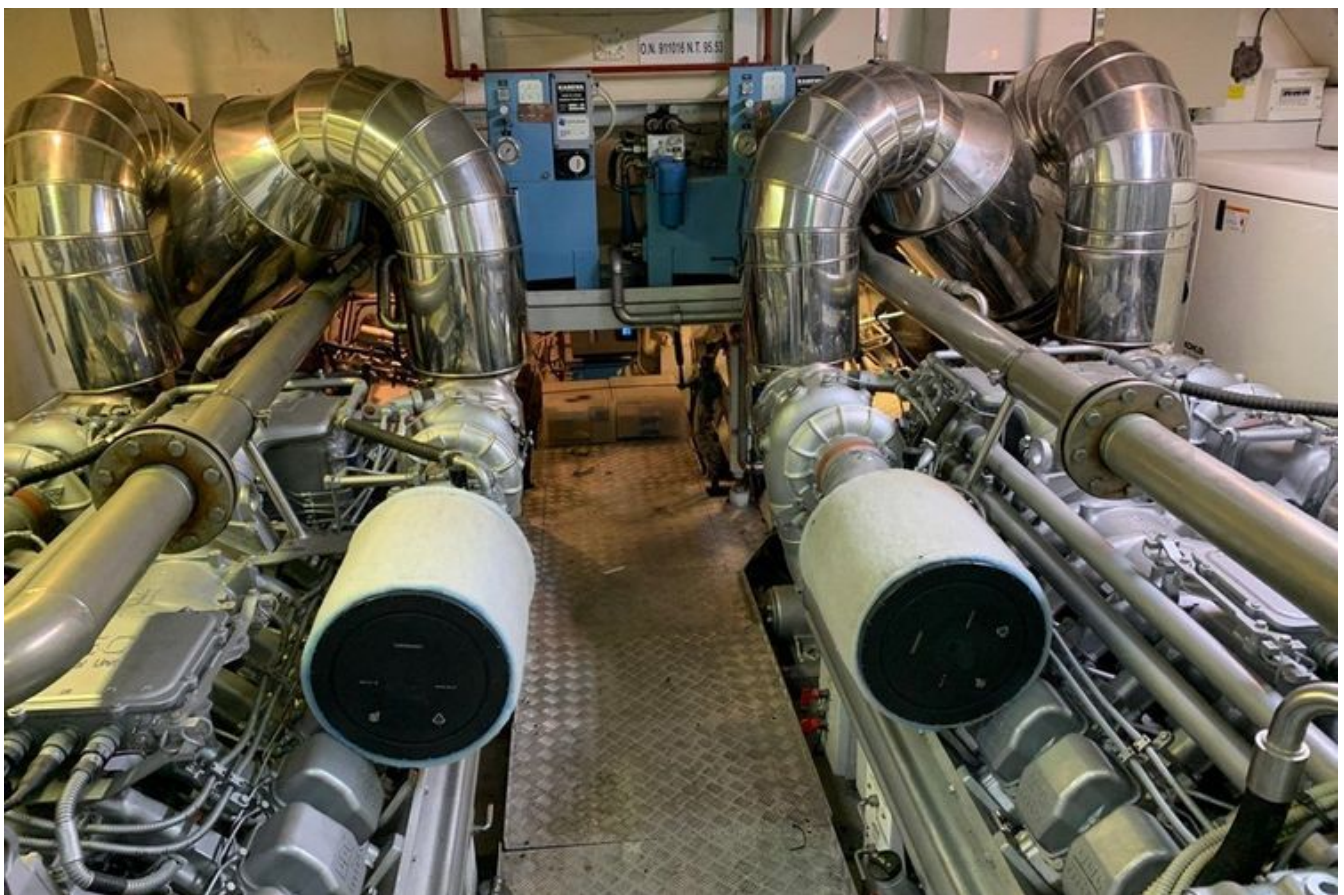
# GALLERY











# CONTACTS

---

Shestakov Yacht Sales is a brokerage company specializing in the sale and service of yachts worldwide. The company offers services for buying and selling both new and used motor yachts, sailing vessels, and luxury superyachts. They also provide yacht registration, insurance, technical maintenance, crew selection, and charter organization services across the U.S., Canada, Latin America, the Caribbean, and the Bahamas.

The founder and lead broker of the company is Andrey Shestakov, a licensed and certified expert with extensive experience in marine engineering and shipbuilding.

The company has an extensive network of partnerships with major yacht manufacturers worldwide and provides services in multiple languages, including Russian, Ukrainian, Spanish, and English. The office is in Dania Beach, Florida, USA.

For more information and to view available yachts, you can visit the company's official website: <https://shestakovyachtsales.com>

## Contact details

---

**Phone:** +1(954)274-4435

**Email:** [andrey@shestakovyachtsales.com](mailto:andrey@shestakovyachtsales.com)

## Address

---



1380 Weeping Willow Way, Hollywood,  
Florida 33019