



SHESTAKOV

Yacht Sales

65 PILOTHOUSE - MARQUIS



Builder:

Marquis

Model:

65 Pilothouse

LOA:

65' 0" (19.81 m)

Beam:

17' 0" (5.46 m)

Max Draft:

19' 8" (6 m)

Water Capacity:

200 Gallons

Fuel Capacity:

600 Gallons

Total Heads:

3

Hull Material:

Fiberglass and Plastic Yachts

Deck Material:

Fiberglass

Engines:

2

Manufacturer:

Caterpillar

If you would like to buy a yacht **65 PILOTHOUSE - Marquis** or would like help, please call +1(954)274-4435 or visit shestakovyachtsales.com

TABLE OF CONTENTS

OVERVIEW	3
Selecting a 65 Pilothouse	3
Features of the Model	3
Technical Specifications	4
Pricing and Ordering	4
Questions and Answers	5
Owner Experience Review	6
Pros and Cons	7
Comparison with Other Models	7
SPECIFICATIONS	9
GALLERY	10
CONTACTS	15

OVERVIEW

The 65 Pilothouse from Marquis represents an elegant entry in the motor yacht category of motor yachts. Built on a sturdy fiberglass and plastic platform and measuring 65 feet, this vessel offered through Shestakov Yacht Sales and broker Andrey Shestakov merges long-range practicality with a dependable twin diesel propulsion arrangement.

Selecting a 65 Pilothouse

Opting for the 65 Pilothouse favors buyers who want a versatile motor yacht that strikes a balance between overall length, beam, and onboard systems designed for comfortable passage-making. With an LOA of 65 ft (19.81 m) and a beam of 17 ft (5.46 m), it delivers substantial internal volume, though its maximum draft of 19.685 ft (6 m) necessitates attention to deeper berths and transit plans. The twin inboard Marquis engine setup suits owners seeking the robustness and familiarity of diesel propulsion.

Buyers focused on extended cruising will appreciate the yacht's three heads, a 200 gallon freshwater tank, and a 600 gallon fuel reserve, all of which support longer periods afloat. The propulsion package—twin inboard Caterpillar diesels—promotes straightforward maintenance and steady handling across varied sea conditions.

Features of the Model

- Category-focused design as a motor yacht in the motor yachts class
- Durable hull construction aligned with fiberglass and plastic practices; deck built in Fiberglass
- Twin inboard Caterpillar diesel engines for reliable propulsion and

maneuvering

- Substantial 65 ft (19.81 m) length and 17 ft (5.46 m) beam for generous interior and deck areas
- Practical endurance profile with 600 gallons of fuel and 200 gallons of freshwater
- Onboard convenience with 3 heads to support guests and crew

Technical Specifications

- Model: 65 Pilothouse
- Builder: Marquis
- Classification: motor yacht within motor yachts
- Hull material: fiberglass and plastic
- Deck material: Fiberglass
- LOA: 65 ft (19.81 m)
- Beam: 17 ft (5.46 m)
- Max draft: 19.685 ft (6 m)
- Engines: 2 x Caterpillar, Inboard, Diesel
- Heads: 3
- Fresh water capacity: 200 gal
- Fuel capacity: 600 gal

Pricing and Ordering

For up-to-date pricing, current availability, and to arrange inspections or delivery logistics, please contact Shestakov Yacht Sales. Broker Andrey Shestakov will assist you with technical specifications, condition assessments, and negotiation tasks to facilitate a smooth purchase of the 65 Pilothouse by Marquis.

Questions and Answers

Q: What type of yacht is the 65 Pilothouse? A: It is classified as a motor yacht in the broader motor yachts segment, constructed on a hull consistent with fiberglass and plastic. These designations clarify its cruising purpose and construction priorities, highlighting a solid platform for **motor yacht** operation.

Q: What are the principal dimensions of the model? A: The 65 Pilothouse has an overall length of 65 ft (19.81 m) and a beam measuring 17 ft (5.46 m), with a maximum draft of 19.685 ft (6 m). These key dimensions influence berth compatibility, routing choices, and the layout expectations aboard.

Q: What powers this yacht, and what does that mean for upkeep? A: Propulsion is provided by 2 x **Caterpillar** engines, configured as **inboard** diesels. The twin-engine arrangement offers redundancy and easier handling; Caterpillar's global parts and service network can help simplify scheduled maintenance for active motor yachts operations.

Q: What onboard capacities and amenities support longer trips? A: The vessel includes 3 **heads**, a **water capacity** of 200 gallons, and a **fuel capacity** of 600 gallons. These figures support practical week-long itineraries and give flexibility for provisioning while cruising.

Q: How do I purchase through Shestakov Yacht Sales? A: Contact Shestakov Yacht Sales to speak with **Andrey Shestakov** about the purchase process for the 65 Pilothouse by Marquis. He will coordinate viewings, surveys, and the closing sequence to ensure the **transaction** reflects survey results and your operational requirements.

Owner Experience Review

Owners commonly deploy the Marquis 65 Pilothouse for family-oriented cruising, with forum discussions noting passages to the Bahamas and Exumas. The layout suits entertaining, featuring expansive windows, open sightlines on the main deck, formal dining for six, a large granite topped galley, and roomy salon and flybridge areas. Below decks are three staterooms plus aft crew quarters; the midship full beam master boasts a king berth, walk in closet, and his and hers heads. Several owners have completed significant refits to adapt the yacht for extended-range or liveaboard purposes.

Underway, examples fitted with MTU 1500 hp packages generally cruise between 24–26 knots, with top speeds exceeding 30 knots. Professional sea trials have praised its behavior in certain seaways, though some owners describe a notably bow high running angle and slower acceleration—colloquially “slower than molasses.” There are also reports of structural flex under heavy conditions and isolated incidents such as shattered bow windows during delivery.

Maintenance reports from owners are frank and varied: trim tab leaks recur in conversations, and criticism about perceived overall build quality and undersized hardware appears. Numerous threads recount electrical and systems problems—ranging from an engine wiring harness fire to a starter remaining engaged and a windlass jamming or running unrestricted—prompting some to view the electrical installations as under specified. Ownership expenses can rise substantially; one owner reported approximately \$500k spent on refit and service, and MTU 1500 units demand periodic major work (boroscope inspections, heat exchanger servicing, and injector checks) that incurs notable cost and downtime.

Pros and Cons

- Proven for family cruising, with owners reporting Bahamas/Exumas passages.
- Liveaboard friendly accommodations: three staterooms plus crew, full beam master, and formal dining for six.
- Capable performance with MTU 1500 hp installations, cruising about 24–26 knots and topping 30+.
- Mixed seakeeping reports, including a bow high attitude and a “slower than molasses” feel for the power.
- Fit and finish and hardware concerns, with owners citing undersized components and interior assembly issues.
- High upkeep and systems demands: trim tab leaks, electrical faults, major MTU service, and some refits around \$500k.

Comparison with Other Models

Model	LOA	Beam	Draft	Speed (Cruising/Max)	Gross Tonnage
65 Pilothouse	65' 0" (19.81 m)	17' 0" (5.46 m)	19' 8" (6 m)		
65	64' 0" (19.53 m)	17' 0" (5.46 m)	15' 10" (4.83 m)	22 kn / 32 kn	
55 LS Flybridge	56' 0" (17.27 m)	16' 0" (4.88 m)	16' 5" (5 m)		
59 Markham Edition	59' 0" (17.98 m)	16' 0" (5.03 m)	14' 9" (4.50 m)		
630 Sport Yacht	63' 0" (19.23 m)	17' 0" (5.23 m)	14' 6" (4.42 m)	21 kn / 30 kn	
500 Sport Coupe	50' 0" (15.24 m)	15' 0" (4.57 m)		27 kn / 31 kn	
59	59' 0" (17.98 m)	16' 0" (5.03 m)	15' 0" (4.58 m)		
55 LS	55' 0" (16.76 m)	16' 0" (4.88 m)	16' 2" (4.92 m)	19 kn / 26 kn	

500 Sport Bridge	49' 0" (15.09 m)	15' 0" (4.75 m)	11' 6" (3.50 m) – 12' 4" (3.75 m)		
63 Sport Yacht	63' 0" (19.20 m)	17' 0" (5.23 m)	14' 9" (4.50 m)	24 kn / 29 kn	

SPECIFICATIONS

LOA:

65' 0" (19.81 m)

Max Draft:

19' 8" (6 m)

Water Capacity:

200 Gallons

Total Heads:

3

Hull Material:

Fiberglass and Plastic Yachts

Engines:

2

Engine Type:

Inboard

Beam:

17' 0" (5.46 m)

Fuel Capacity:

600 Gallons

Deck Material:

Fiberglass

Manufacturer:

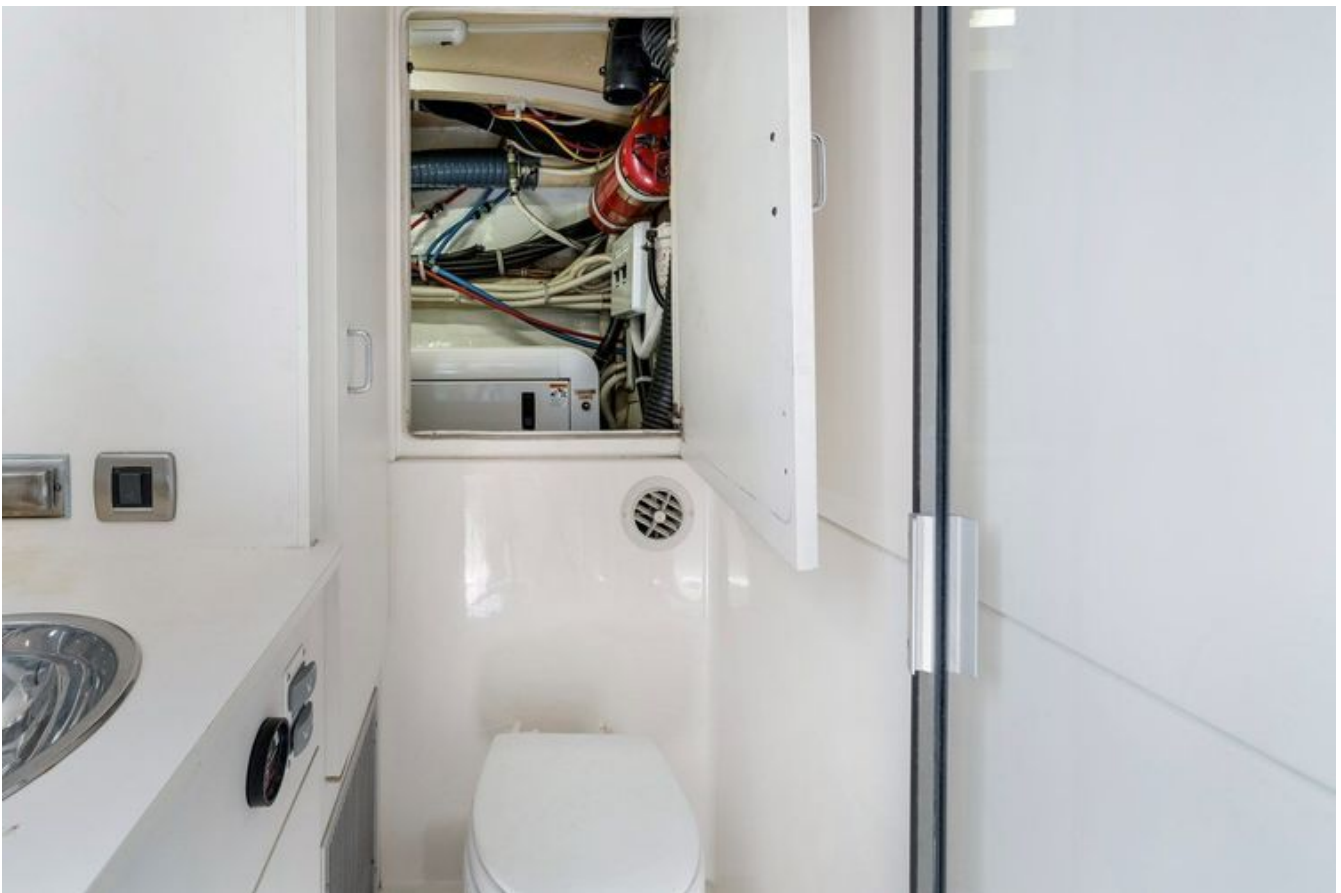
Caterpillar

Fuel Type:

Diesel

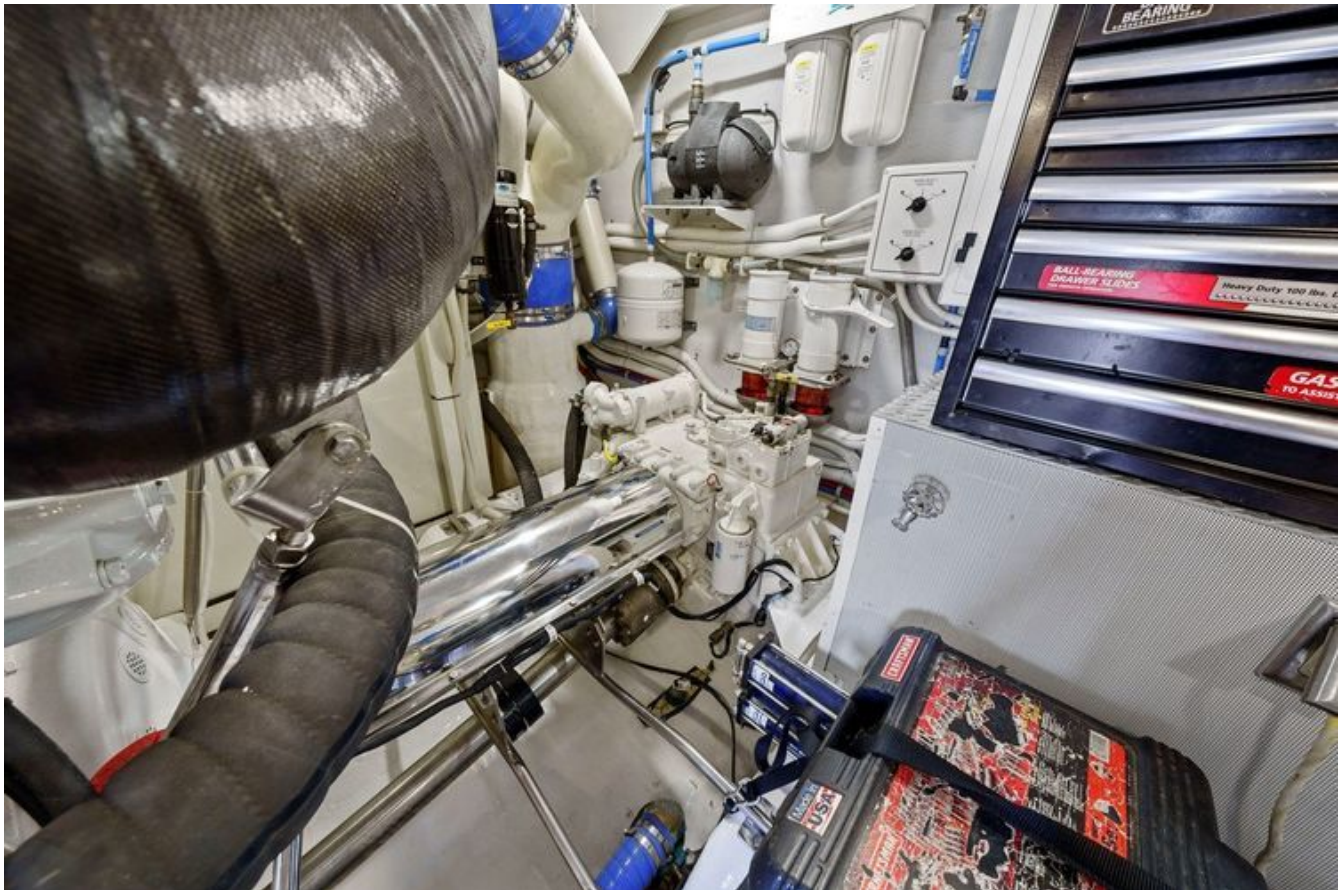
GALLERY











CONTACTS

Shestakov Yacht Sales is a brokerage company specializing in the sale and service of yachts worldwide. The company offers services for buying and selling both new and used motor yachts, sailing vessels, and luxury superyachts. They also provide yacht registration, insurance, technical maintenance, crew selection, and charter organization services across the U.S., Canada, Latin America, the Caribbean, and the Bahamas.

The founder and lead broker of the company is Andrey Shestakov, a licensed and certified expert with extensive experience in marine engineering and shipbuilding.

The company has an extensive network of partnerships with major yacht manufacturers worldwide and provides services in multiple languages, including Russian, Ukrainian, Spanish, and English. The office is in Dania Beach, Florida, USA.

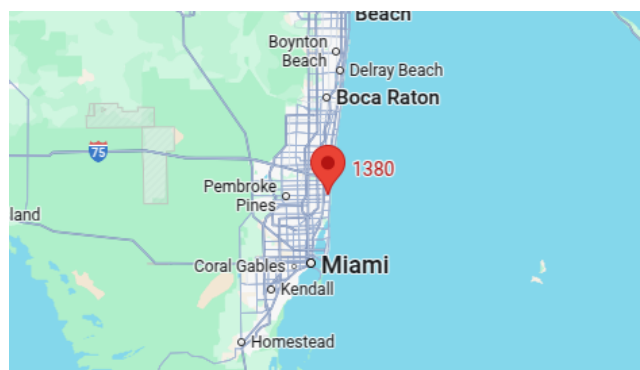
For more information and to view available yachts, you can visit the company's official website: <https://shestakovyachtsales.com>

Contact details

Phone: +1(954)274-4435

Email: andrey@shestakovyachtsales.com

Address



1380 Weeping Willow Way, Hollywood,
Florida 33019