



SHESTAKOV

Yacht Sales

## 92 - MAZU YACHTS



**Builder:**

MAZU YACHTS

**Model:**

92

**LOA:**

92' 0" (28.04 m)

**Beam:**

22' 0" (6.90 m)

**Max Draft:**

5' 11" (1.80 m)

**Cruise Speed:**

12 kn / 13.81 mph

**Max Speed:**

17 kn / 19.56 mph

**Water Capacity:**

924.6 Gallons

**Fuel Capacity:**

2615.3 Gallons

**Crew Cabin:**

3

**Hull Material:**

Steel Yachts

**Deck Material:**

Steel

If you would like to buy a yacht **92 - MAZU YACHTS** or would like help, please call +1(954)274-4435 or visit [shestakovyachtsales.com](http://shestakovyachtsales.com)

---

# TABLE OF CONTENTS

---

<b>OVERVIEW .....</b>	<b>3</b>
<b>Selecting a 92 .....</b>	<b>3</b>
<b>Features of the Model .....</b>	<b>3</b>
<b>Technical Specifications .....</b>	<b>4</b>
<b>Pricing and Ordering .....</b>	<b>4</b>
<b>Questions and Answers .....</b>	<b>4</b>
<b>Owner Experience Review .....</b>	<b>5</b>
<b>Pros and Cons .....</b>	<b>6</b>
<b>Comparison with Other Models .....</b>	<b>6</b>
<b>SPECIFICATIONS .....</b>	<b>7</b>
<b>GALLERY .....</b>	<b>8</b>
<b>CONTACTS .....</b>	<b>13</b>

## OVERVIEW

---

The 92 from MAZU YACHTS is a sophisticated motor yacht built on a durable steel hull with a Semi Displacement hull form and an interior by Red Yacht Design. For expert assistance from initial concept through delivery, contact Andrey Shestakov and the team at Shestakov Yacht Sales.

## Selecting a 92

---

Opt for the 92 when you prioritize the security of steel construction combined with the efficiency of a Semi Displacement motor yacht. Powered by three Volvo Penta inboard diesel units, she cruises at 12 kn (13.81 mph) with a 17 kn (19.56 mph) top speed, offering confident long distance capability. Red Yacht Design's interior plan and provision for 3 crew cabins make extended cruising practical, while generous tankage (fuel 2615.3 gal; water 924.6 gal) adds significant autonomy. For bespoke build guidance and factory coordination, Andrey Shestakov and Shestakov Yacht Sales will represent your interests with MAZU YACHTS.

## Features of the Model

---

- Category: contemporary motor yacht
- Hull: Semi Displacement form built in steel; deck constructed of Steel
- Powerplant: three Volvo Penta inboard diesel engines
- Performance: cruising speed 12 kn (13.81 mph); maximum speed 17 kn (19.56 mph)
- Principal dimensions: 92 ft (28.04 m) LOA; 22 ft (6.9 m) beam; 5.906 ft (1.8 m) maximum draft
- Interior by Red Yacht Design; accommodation includes 3 crew cabins

## Technical Specifications

---

- Builder: MAZU YACHTS
- Model: 92
- Category: motor yacht
- Hull material: steel
- Hull configuration: Semi Displacement
- Deck material: Steel
- LOA: 92 ft (28.04 m)
- Beam: 22 ft (6.9 m)
- Draft (max): 5.906 ft (1.8 m)
- Engines: 3 x Volvo Penta; Type: Inboard; Fuel: Diesel
- Speed (cruise): 12 kn (13.81 mph)
- Speed (max): 17 kn (19.56 mph)
- Fuel capacity: 2615.3 gal
- Water capacity: 924.6 gal
- Interior designer: Red Yacht Design
- Crew cabins: 3

## Pricing and Ordering

---

Current pricing and lead times for the 92 are provided upon request. Reach out to Andrey Shestakov at Shestakov Yacht Sales to review options with MAZU YACHTS, verify available build slots, and reserve your place in production.

## Questions and Answers

---

- Q: What are the performance figures of the 92? A: The 92 delivers a **cruising speed** of 12 kn (13.81 mph) and reaches a **top speed** of 17 kn (19.56 mph).
- Q: Which engines power the 92? A: Propulsion comes from three Volvo Penta

inboard **diesel engines** .

- Q: What is the hull type and material? A: The hull is a **Semi Displacement** design built in steel with a Steel deck, classified as a motor yacht.
- Q: What are the principal dimensions? A: **LOA** 92 ft (28.04 m), **beam** 22 ft (6.9 m), **draft** max 5.906 ft (1.8 m).
- Q: How is the yacht arranged for crew? A: The 92 includes **3 crew cabins** , and the accommodation design is by Red Yacht Design.

## Owner Experience Review

---

Framed by its designers and early owner feedback, the 92 from MAZU YACHTS is marketed as a true "home on the water" suitable for extended, multi generational cruising. The main deck's full beam owner suite and the saloon with full height windows create a luminous, private principal apartment, while guest circulation and social spaces remain clearly separated.

When underway, sea trials indicate a relaxed, economical pace: roughly 12–12.5 knots for sustained passages with an estimated range near 1,170–1,200 nautical miles, and a peak speed in the region of 18 knots. The steel hull is paired with triple Volvo Penta IPS 1050 drives—an atypical choice at this size—combined with split machinery spaces intended to reduce noise and vibration, a clear priority in the design brief.

For shorter cruises and day enjoyment, the generous aft platform with fold down bulwarks and an expansive sundeck create a beach club atmosphere ideal for toys and entertaining, and the arrangement should translate well to charter use. Industry commentary notes this is among the first steel yachts of this length to adopt IPS, so spare parts channels and long term service experience are still evolving. The separated engine and pump rooms help acoustic performance but can make routine access and some servicing tasks more complex. Independent long term ownership data is scarce, with

the first hull delivered in 2023.

## Pros and Cons

- Expansive beach club arrangement featuring a large swim platform, fold down bulwarks, and a sundeck well suited to day boats and water toys.
- Bright and private accommodation with full height saloon glazing and a main deck full beam owner suite.
- Quiet, efficient cruising around ~12–12.5 knots, an approximate range of ~1,170–1,200 nm, and reduced vibration due to IPS installation.
- The unusual use of triple IPS on a steel hull at this size introduces some uncertainty for long term service and parts support.
- Divided machinery spaces enhance onboard quietness but may complicate routine maintenance access.
- Limited independent ownership track record, with the initial hull launched in 2023.

## Comparison with Other Models

Model	LOA	Beam	Draft	Speed (Cruising/Max)	Gross Tonnage
112DS	112' 0" (34.20 m)	25' 0" (7.63 m)	5' 9" (1.75 m)	16 kn / 21 kn	280
82	82' 0" (24.99 m)	19' 0" (5.90 m)	4' 11" (1.50 m)	32 kn / 41 kn	
52	52' 0" (15.85 m)	15' 0" (4.60 m)	2' 11" (0.90 m)	29 kn / 37 kn	
132DS	131' 0" (40.20 m)	27' 0" (8.32 m)	7' 1" (2.15 m)	12 kn / 16 kn	
62	62' 0" (19 m)	17' 0" (5.30 m)	3' 11" (1.20 m)	34 kn / 40 kn	
92	92' 0" (28.04 m)	22' 0" (6.90 m)	5' 11" (1.80 m)	12 kn / 17 kn	
42 WA	41' 0" (12.50 m)	12' 0" (3.68 m)	9' 0" (2.75 m)	32 kn / 45 kn	
N/A	42' 0" (12.80 m)	11' 0" (3.60 m)	2' 11" (0.90 m)	28 kn / 34 kn	

# SPECIFICATIONS

---

**LOA:**

92' 0" (28.04 m)

**Max Draft:**

5' 11" (1.80 m)

**Cruise Speed:**

12 kn / 13.81 mph

**Water Capacity:**

924.6 Gallons

**Crew Cabin:**

3

**Hull Material:**

Steel Yachts

**Hull Configuration:**

Semi-Displacement

**Engines:**

3

**Engine Type:**

Inboard

**Beam:**

22' 0" (6.90 m)

**Max Speed:**

17 kn / 19.56 mph

**Fuel Capacity:**

2615.3 Gallons

**Deck Material:**

Steel

**Interior Designer:**

Red Yacht Design

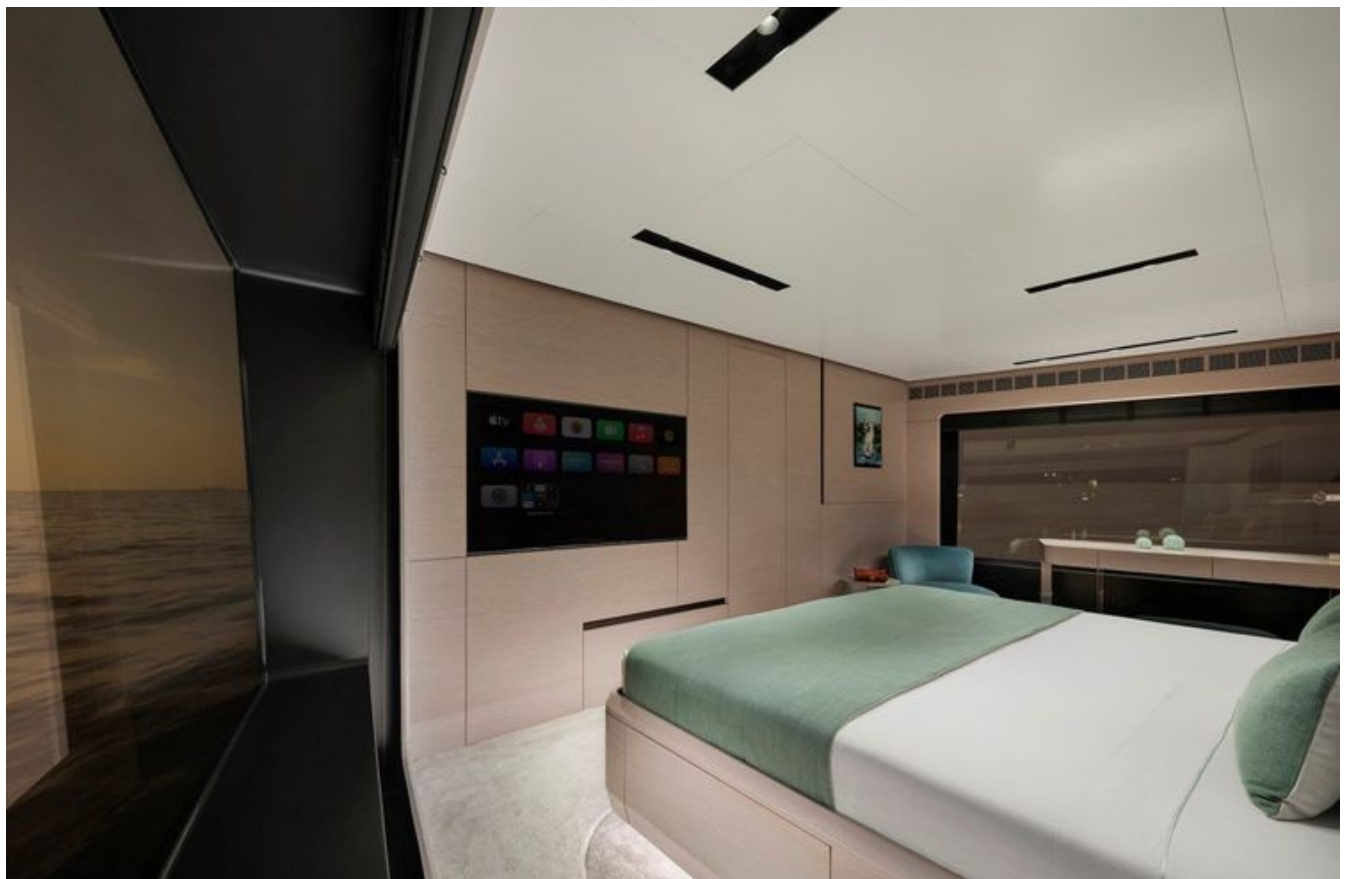
**Manufacturer:**

Volvo Penta

**Fuel Type:**

Diesel

# GALLERY











# CONTACTS

---

Shestakov Yacht Sales is a brokerage company specializing in the sale and service of yachts worldwide. The company offers services for buying and selling both new and used motor yachts, sailing vessels, and luxury superyachts. They also provide yacht registration, insurance, technical maintenance, crew selection, and charter organization services across the U.S., Canada, Latin America, the Caribbean, and the Bahamas.

The founder and lead broker of the company is Andrey Shestakov, a licensed and certified expert with extensive experience in marine engineering and shipbuilding.

The company has an extensive network of partnerships with major yacht manufacturers worldwide and provides services in multiple languages, including Russian, Ukrainian, Spanish, and English. The office is in Dania Beach, Florida, USA.

For more information and to view available yachts, you can visit the company's official website: <https://shestakovyachtsales.com>

## Contact details

---

**Phone:** +1(954)274-4435

**Email:** [andrey@shestakovyachtsales.com](mailto:andrey@shestakovyachtsales.com)

## Address

---



1380 Weeping Willow Way, Hollywood,  
Florida 33019