



SHESTAKOV

Yacht Sales

## 80' SPORTFISH – MERRITT BOAT WORKS



**Builder:**

MERRITT BOAT WORKS

**Model:**

80' Sportfish

**LOA:**

80' 0" (24.38 m)

**Beam:**

20' 0" (6.17 m)

**Max Draft:**

16' 11" (5.17 m)

**Cruise Speed:**

28 kn / 32.22 mph

**Max Speed:**

34 kn / 39.13 mph

**Fuel Capacity:**

3200 Gallons

**Hull Material:**

Fiberglass and Plastic Yachts

**Deck Material:**

Fiberglass

**Engines:**

2

**Manufacturer:**

MTU

If you would like to buy a yacht **80' SPORTFISH – MERRITT BOAT WORKS** or would like help, please call +1(954)274-4435 or visit [shestakovyachtsales.com](http://shestakovyachtsales.com)

---

# TABLE OF CONTENTS

---

<b>OVERVIEW .....</b>	<b>3</b>
<b>Selecting a 80&amp;#39; Sportfish .....</b>	<b>3</b>
<b>Features of the Model .....</b>	<b>3</b>
<b>Technical Specifications .....</b>	<b>4</b>
<b>Pricing and Ordering .....</b>	<b>4</b>
<b>Questions and Answers .....</b>	<b>4</b>
<b>Owner Experience Review .....</b>	<b>5</b>
<b>Pros and Cons .....</b>	<b>6</b>
<b>Comparison with Other Models .....</b>	<b>6</b>
<b>SPECIFICATIONS .....</b>	<b>8</b>
<b>GALLERY .....</b>	<b>9</b>
<b>CONTACTS .....</b>	<b>14</b>

## OVERVIEW

---

Purpose-built for demanding offshore work, the 80' Sportfish from MERRITT BOAT WORKS is presented as a high-caliber motor yacht in the dedicated sport fisherman category, built on a trusted fiberglass and plastic foundation. Shestakov Yacht Sales features this model with tailored support and guidance from broker Andrey Shestakov.

### Selecting a 80' Sportfish

---

Opting for the 80' Sportfish is a logical choice for buyers who prioritize tournament-grade capability combined with robust performance. With a comfortable cruise at 28 knots and a top speed near 34 knots, driven by twin MTU inboard diesels and supported by a generous 20-foot beam, it provides secure, predictable handling for anglers and crew. As both a dedicated sport fisherman and an upscale motor yacht, it delivers the dimensions, speed, and construction quality that buyers associate with MERRITT BOAT WORKS.

### Features of the Model

---

- A performance-focused profile delivering a 28-knot cruising pace and a 34-knot top speed for swift offshore transits.
- Twin MTU inboard diesel engines (2 units) using diesel fuel for consistent, dependable propulsion.
- An 80 ft LOA combined with a 20 ft beam creates an expansive deck area suited to intensive sportfishing activity.
- Hull constructed to the fiberglass and plastic specification; deck is finished in fiberglass.
- A 3,200-gallon fuel capacity designed to support extended, demanding days on the water.

## Technical Specifications

---

- Length overall (LOA): 80 ft (24.38 m)
- Beam: 20 ft (6.17 m)
- Draft (max): 16.951 ft (5.1666 m)
- Cruising speed: 28 kn (32.22 mph)
- Maximum speed: 34 kn (39.13 mph)
- Engines: 2 x MTU, Inboard, Diesel
- Fuel capacity: 3200 gal
- Hull: fiberglass and plastic
- Deck material: Fiberglass
- Type: motor yacht; sport fisherman

## Pricing and Ordering

---

Current availability and pricing for the 80' Sportfish are provided on request. Contact Andrey Shestakov at Shestakov Yacht Sales to explore present listings, arrange inspections, and discuss the purchase process for this motor yacht in the sport fisherman line from MERRITT BOAT WORKS.

## Questions and Answers

---

- What is the yacht type of the 80' Sportfish? The **yacht type** is a motor yacht laid out as a **sport fisherman**, riding on a **hull** classified under fiberglass and plastic.
- What are the key performance figures? **Cruising speed** is 28 knots (32.22 mph), with a **maximum speed** of 34 knots (39.13 mph), providing fast transit to and from fishing grounds.
- What powers this model? **Engines**: 2 x MTU, arranged as **inboard** installations and running on **diesel**—engine choices known for solid

performance and broad support.

- What are the principal dimensions? **LOA** : 80 ft (24.38 m); **Beam** : 20 ft (6.17 m); **Draft** : 16.951 ft (5.1666 m).
- How do I buy through Shestakov Yacht Sales? For **contact** and **ordering** , connect with Andrey Shestakov at Shestakov Yacht Sales. He will manage inquiries, showings, and the next steps for the 80' Sportfish by MERRITT BOAT WORKS.

## Owner Experience Review

---

Owners and crews are drawn to the 80' Sportfish from MERRITT BOAT WORKS because it blends the composure of a large yacht with the quickness expected of serious sportfishing machines. Professional testing has recorded rapid acceleration—about 11 seconds to reach 30 knots—from idle, with top speeds reported in the mid-30s and an efficient cruise generally in the high-20s to low-30s range. The wide-chine hull design contributes lift and reduces wetted surface for better fuel economy, while the sturdy composite construction and an approximate 120,000 lb displacement produce a stable, comfortable offshore ride; however, the larger hull size means a wider turning circle compared with smaller sportfishing boats.

On a practical level, the cockpit is configured for tournament work with integrated fish boxes and baitwells, and multiple 80' Merritt examples appear in broker and charter listings as private vessels or boutique charter platforms. For comfort during trips and overnight stays, accommodations include four double staterooms with four full heads, an expansive salon, and a balcony deck with air-conditioned seating off the cockpit to keep guests comfortable. Storage is ample—rod and tackle stowage beneath settees and flybridge seating, a sizable amidships tackle locker, plus a crew stateroom with direct access to the engine room to streamline both operations and maintenance.

Maintenance is on the scale you would expect for a yacht of this size. The common MTU 16V2000 engine package produces strong performance but, as owners and forum contributors frequently point out, can be costly to service or overhaul if upkeep is postponed. Generous engine-room access and standing headroom make routine inspections and work easier, and brokers typically emphasize recent services, hose and fuel-line replacements, and accurate engine-hour logs in listings. Regular servicing of large diesels and major systems is important to preserve reliability and resale value; service histories vary by hull, but these themes recur across reviews and listings.

## Pros and Cons

- Serious sportfishing cockpit with built-in fish boxes and baitwells supports tournament use.
- Four double staterooms and four heads, plus a large salon and a balcony deck with air-conditioned seating off the cockpit, suit extended trips.
- Quick acceleration to 30 knots and a practical high-20s to low-30s cruise enable fast offshore runs with efficient fuel burn.
- Wide-chine hull delivers lift and economy but results in a larger turning radius than smaller sportfish.
- MTU 16V2000 propulsion offers high performance but can carry high service and overhaul costs if maintenance is deferred.
- Ownership benefits from thorough documentation; expect regular engine services, hose/fuel-line replacements, and hour tracking to preserve reliability and value.

## Comparison with Other Models

Model	LOA	Beam	Draft	Speed (Cruising/Max)	Gross Tonnage

86 Convertible	86' 0" (26.21 m)	21' 0" (6.45 m)	18' 1" (5.50 m)	30 kn / 38 kn	
80' Sportfish	80' 0" (24.38 m)	20' 0" (6.17 m)	16' 11" (5.17 m)	28 kn / 34 kn	
86' Enclosed Flybridge	86' 0" (26.21 m)	21' 0" (6.40 m)	17' 9" (5.42 m)	28 kn / 34 kn	
42 Sportfish	42' 0" (12.80 m)	13' 0" (4.01 m)	12' 0" (3.67 m)	20 kn / 30 kn	22
58' Sportfish	58' 0" (17.68 m)	18' 0" (5.64 m)	16' 5" (5 m)	26 kn / 30 kn	
Sportfish	72' 0" (21.95 m)	20' 0" (6.10 m)		30 kn / 36 kn	
77 Merritt Sportfish Convertible	77' 0" (23.47 m)	21' 0" (6.43 m)	21' 1" (6.42 m)	37 kn / 40 kn	
72' Sportfish Convertible	72' 0" (21.95 m)	19' 0" (5.94 m)			
72' Sportfish	72' 0" (22.02 m)	19' 0" (5.94 m)	18' 7" (5.67 m)	30 kn / 36 kn	
75' Sportfish	75' 0" (22.86 m)	19' 0" (5.99 m)	18' 7" (5.67 m)	27 kn / 33 kn	

---

# SPECIFICATIONS

---

**LOA:**

80' 0" (24.38 m)

**Max Draft:**

16' 11" (5.17 m)

**Cruise Speed:**

28 kn / 32.22 mph

**Fuel Capacity:**

3200 Gallons

**Hull Material:**

Fiberglass and Plastic Yachts

**Engines:**

2

**Engine Type:**

Inboard

**Beam:**

20' 0" (6.17 m)

**Max Speed:**

34 kn / 39.13 mph

**Deck Material:**

Fiberglass

**Manufacturer:**

MTU

**Fuel Type:**

Diesel

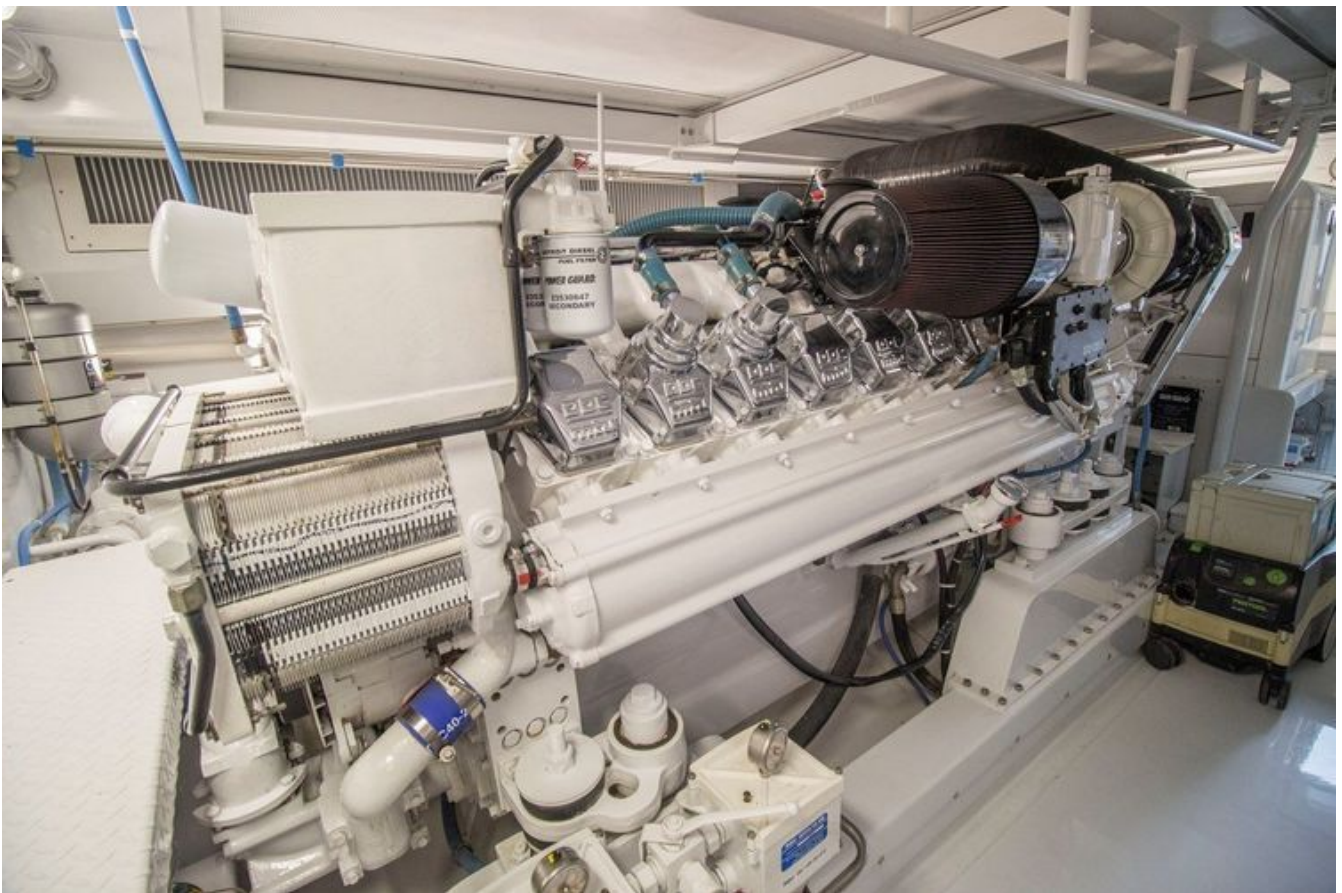
# GALLERY











# CONTACTS

---

Shestakov Yacht Sales is a brokerage company specializing in the sale and service of yachts worldwide. The company offers services for buying and selling both new and used motor yachts, sailing vessels, and luxury superyachts. They also provide yacht registration, insurance, technical maintenance, crew selection, and charter organization services across the U.S., Canada, Latin America, the Caribbean, and the Bahamas.

The founder and lead broker of the company is Andrey Shestakov, a licensed and certified expert with extensive experience in marine engineering and shipbuilding.

The company has an extensive network of partnerships with major yacht manufacturers worldwide and provides services in multiple languages, including Russian, Ukrainian, Spanish, and English. The office is in Dania Beach, Florida, USA.

For more information and to view available yachts, you can visit the company's official website: <https://shestakovyachtsales.com>

## Contact details

---

**Phone:** +1(954)274-4435

**Email:** [andrey@shestakovyachtsales.com](mailto:andrey@shestakovyachtsales.com)

## Address

---



1380 Weeping Willow Way, Hollywood,  
Florida 33019