



SHESTAKOV

Yacht Sales

## CUSTOM COMMERCIAL FISHING – MUNRO



**Builder:**

MUNRO

**Model:**

Custom Commercial Fishing

**LOA:**

43' 0" (13.11 m)

**Beam:**

13' 0" (4.01 m)

**Water Capacity:**

200 Gallons

**Fuel Capacity:**

400 Gallons

**Sleeps:**

2

**Hull Material:**

Fiberglass and Plastic Yachts

**Deck Material:**

Fiberglass

**Engines:**

1

**Manufacturer:**

Detroit Diesel

**Engine Type:**

Inboard

If you would like to buy a yacht **CUSTOM COMMERCIAL FISHING – MUNRO** or would like help, please call +1(954)274-4435 or visit [shestakovyachtsales.com](http://shestakovyachtsales.com)

---

# TABLE OF CONTENTS

---

**OVERVIEW ..... 3**

- Selecting a Custom Commercial Fishing ..... 3
- Features of the Model ..... 3
- Technical Specifications ..... 4
- Pricing and Ordering ..... 4
- Questions and Answers ..... 4
- Owner Experience Review ..... 5
- Pros and Cons ..... 6
- Comparison with Other Models ..... 6

**SPECIFICATIONS ..... 7**

**GALLERY ..... 8**

**CONTACTS ..... 13**

## OVERVIEW

---

Built by MUNRO, the Custom Commercial Fishing is a rugged 43 ft working platform designed for owners who prioritize functionality and low-maintenance operation. This utilitarian motor yacht sports a sturdy fiberglass and plastic hull and simple accommodations for two. Listed by Andrey Shestakov of Shestakov Yacht Sales, the boat is presented with clear, verifiable specifications to support confident purchasing decisions.

## Selecting a Custom Commercial Fishing

---

Opting for the Custom Commercial Fishing is sensible when you need a compact but capable working vessel: its 43 ft (13.11 m) LOA and 13 ft (4.01 m) beam create a stable, efficient deck layout without unnecessary complexity. A single inboard Detroit Diesel engine keeps systems simple to operate and maintain, while berth space for two allows for overnight watches or short-term crew rotations. With 400 gallons of fuel and 200 gallons of fresh water aboard, the boat is set up for practical, mission-focused use where availability and uptime are critical.

## Features of the Model

---

- Single inboard Detroit Diesel power for straightforward propulsion and service
- Durable fiberglass deck surface for easy upkeep
- Sleeping accommodations for two
- Practical tankage: 400 gal fuel and 200 gal water
- 43 ft LOA and 13 ft beam provide compact yet capable proportions
- As a motor yacht with a fiberglass and plastic hull, it emphasizes utility and durability

## Technical Specifications

---

- Builder: MUNRO
- Model: Custom Commercial Fishing
- Type: motor yacht
- Hull material: fiberglass and plastic
- Deck material: Fiberglass
- LOA: 43 ft (13.11 m)
- Beam: 13 ft (4.01 m)
- Engines: 1 x Detroit Diesel, Inboard, Diesel
- Sleeps: 2
- Fuel capacity: 400 gal
- Water capacity: 200 gal

## Pricing and Ordering

---

For up-to-date availability, pricing estimates, or to schedule a personal inspection, please contact Andrey Shestakov at Shestakov Yacht Sales. Our brokerage can assist you in comparing this motor yacht with similar vessels, arranging viewings, and managing paperwork through to closing. Reach out to discuss delivery timelines, survey requirements, and any logistical support you may need.

## Questions and Answers

---

Q: What type of vessel is this and what is the hull made of? A: It is a motor yacht constructed with a fiberglass and plastic hull. The **Type** and **hull material** are explicitly stated to clarify ownership expectations.

Q: Who built it and what powers the boat? A: The vessel is built by MUNRO and

is driven by a single Detroit Diesel inboard engine. The propulsion system is a **Detroit Diesel** in an **Inboard** arrangement running on diesel fuel.

Q: What are the key dimensions? A: The **LOA** measures 43 ft (13.11 m) and the **Beam** measures 13 ft (4.01 m), yielding a compact, work-oriented footprint.

Q: How many can it sleep and what are the tank capacities? A: It **sleeps 2** . Fuel capacity is **400 gal** , and fresh water capacity is **200 gal** .

Q: How do I buy or place an offer through the brokerage? A: Contact **Andrey Shestakov** at **Shestakov Yacht Sales** to review the Custom Commercial Fishing, schedule an inspection, and move forward with offers, survey coordination, and closing procedures.

## Owner Experience Review

---

Owners and operators of the Custom Commercial Fishing from MUNRO consistently describe the boat as a purpose-built work platform. Its primary applications are rigged bottom fishing and commercial deck work using snapper reels; multiple sellers have dubbed it “a tank of a boat” that “will last forever,” reflecting a robust build and uncompromising workboat demeanor. Common installations include the Detroit Diesel 8-71 matched to an Allison 2:1 gearbox, reinforcing its commercial-strength torque and dependability for heavy loads.

Condition and performance depend heavily on the individual hull’s history. One forum owner discussing older small Munro hulls raised issues such as “just one stringer” and “flimsy” sides, a warning that heavily used, aged examples may require structural attention. That concern appears in listings showing vessels stripped back to the stringers and fully rebuilt in 2020 with new bulkheads, structural beams, decks, aluminum hatches, fuel and water tanks, and updated wiring—repairs that, when executed correctly, restore

structural integrity and seakeeping. Onboard comforts are modest by design: refitted boats often note a new V-berth and mattresses, a galley equipped with a propane stove/oven, and a tankless water heater—adequate for two-person transits rather than full-time liveaboard comfort. Storage is ample, with a large 4,000 lb deck/fish box and substantial fuel/water capacities (typically listed around 400 gal fuel and 200 gal water), matching the vessel’s focus on extended commercial operations.

## Pros and Cons

---

- Heavy-duty workboat character praised as “a tank,” well-suited to rigged bottom fishing and deck operations.
- Documented 2020 structural overhauls on refit examples address bulkheads, beams, decks, tanks, and wiring.
- Detroit Diesel 8-71 with Allison 2:1 drivetrain delivers commercial-grade torque and reliability.
- Older small Munro hull owners have reported limited stringering and flimsy sides, so unfitted boats warrant close surveys.
- Interior is utilitarian with sleep for two and a basic galley, better for transits than full-time cruising.
- Prior heavy commercial use can mean significant wear and fatigue before any rebuild.

## Comparison with Other Models

---

Model	LOA	Beam	Draft	Speed (Cruising/Max)	Gross Tonnage
Custom Commercial Fishing	43' 0" (13.11 m)	13' 0" (4.01 m)			

# SPECIFICATIONS

---

**LOA:**

43' 0" (13.11 m)

**Water Capacity:**

200 Gallons

**Sleeps:**

2

**Hull Material:**

Fiberglass and Plastic Yachts

**Engines:**

1

**Engine Type:**

Inboard

**Beam:**

13' 0" (4.01 m)

**Fuel Capacity:**

400 Gallons

**Deck Material:**

Fiberglass

**Manufacturer:**

Detroit Diesel

**Fuel Type:**

Diesel

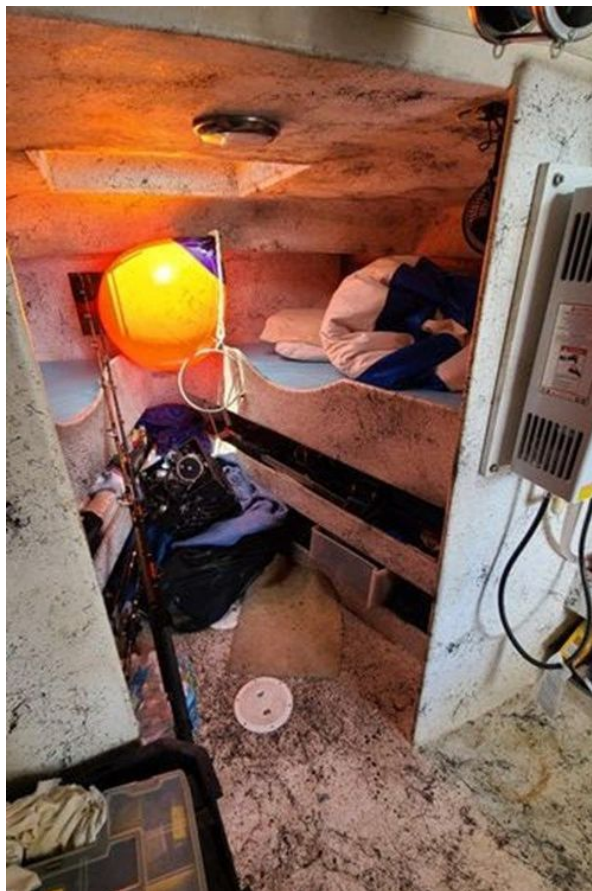
# GALLERY











# CONTACTS

---

Shestakov Yacht Sales is a brokerage company specializing in the sale and service of yachts worldwide. The company offers services for buying and selling both new and used motor yachts, sailing vessels, and luxury superyachts. They also provide yacht registration, insurance, technical maintenance, crew selection, and charter organization services across the U.S., Canada, Latin America, the Caribbean, and the Bahamas.

The founder and lead broker of the company is Andrey Shestakov, a licensed and certified expert with extensive experience in marine engineering and shipbuilding.

The company has an extensive network of partnerships with major yacht manufacturers worldwide and provides services in multiple languages, including Russian, Ukrainian, Spanish, and English. The office is in Dania Beach, Florida, USA.

For more information and to view available yachts, you can visit the company's official website: <https://shestakovyachtsales.com>

## Contact details

---

**Phone:** +1(954)274-4435

**Email:** [andrey@shestakovyachtsales.com](mailto:andrey@shestakovyachtsales.com)

## Address

---



1380 Weeping Willow Way, Hollywood,  
Florida 33019