



SHESTAKOV

Yacht Sales

53 CLASSIC – NAVIGATOR



Builder:

NAVIGATOR

Model:

53 Classic

LOA:

53' 0" (16.15 m)

Beam:

15' 0" (4.57 m)

Cruise Speed:

18 kn / 20.71 mph

Water Capacity:

170 Gallons

Fuel Capacity:

600 Gallons

Sleeps:

4

Total Heads:

2

Hull Material:

Fiberglass and Plastic Yachts

Deck Material:

Fiberglass

Engines:

2

If you would like to buy a yacht **53 CLASSIC – NAVIGATOR** or would like help, please call +1(954)274-4435 or visit shestakovyachtsales.com

TABLE OF CONTENTS

OVERVIEW	3
Selecting a 53 Classic	3
Features of the Model	3
Technical Specifications	4
Pricing and Ordering	4
Questions and Answers	4
Owner Experience Review	5
Pros and Cons	6
Comparison with Other Models	6
SPECIFICATIONS	8
GALLERY	9
CONTACTS	14

OVERVIEW

The 53 Classic from NAVIGATOR is an elegantly appointed motor yacht built on a robust fiberglass-and-plastic foundation. Measuring 53 ft (16.15 m) overall with a 15 ft (4.57 m) beam and driven by twin inboard Volvo Penta diesel engines, she typically cruises at 18 knots (about 20.71 mph). Accommodation is arranged for 4 guests with 2 heads, while 600 gallons of fuel and 170 gallons of freshwater support extended time aboard.

Selecting a 53 Classic

Opting for a 53 Classic reflects a desire for a balanced combination of seakeeping and livability. The 53 Classic from NAVIGATOR delivers the scale many owners prefer for coastal cruising and weekend escapes, pairing a sensible interior layout with economical twin-diesel propulsion. Connect with Shestakov Yacht Sales and broker Andrey Shestakov to review your cruising itinerary, guest requirements, and preferred outfitting so the 53 Classic meets your expectations.

Features of the Model

- Reliable twin-diesel propulsion: paired inboard Volvo Penta engines enable comfortable 18-knot cruising
- Built for durability with a fiberglass-and-plastic hull and fiberglass decking
- Sleeping arrangements for 4 with 2 heads to support overnight comfort
- Large fuel stores (600 gallons) and 170 gallons of fresh water for longer passages
- Manageable 53 ft LOA and 15 ft beam for straightforward docking and harbor maneuvering

Technical Specifications

- Model: 53 Classic
- Builder: NAVIGATOR
- Type: motor yacht
- Hull: fiberglass/plastic
- Deck material: Fiberglass
- LOA: 53 ft (16.15 m)
- Beam: 15 ft (4.57 m)
- Cruising speed: 18 knots (20.71 mph)
- Engines: 2 x Volvo Penta, Inboard, Diesel
- Sleeps: 4
- Heads: 2
- Fuel capacity: 600 gal
- Water capacity: 170 gal

Pricing and Ordering

To obtain current pricing, availability, and to examine available listings for the 53 Classic by NAVIGATOR, contact Shestakov Yacht Sales. Broker Andrey Shestakov will assist with surveys, negotiations, and the closing process to help you acquire the right motor yacht tailored to your cruising needs.

Questions and Answers

Q: What type of yacht is the 53 Classic? A: It's a **motor yacht** constructed on a **fiberglass-and-plastic** hull by NAVIGATOR.

Q: What is the **cruising speed** and **engine setup** ? A: The 53 Classic typically cruises at **18 knots (about 20.71 mph)** and is powered by **two inboard Volvo**

Penta diesel engines.

Q: How many people can **sleep aboard** , and how many **heads** are there? A: The yacht accommodates **4** for sleeping and features **2 heads** , providing sensible sleeping and sanitation arrangements for family or guests.

Q: What are the key **dimensions** ? A: Overall length is **53 ft (16.15 m)** with a beam of **15 ft (4.57 m)** , giving the 53 Classic a well-proportioned interior and handling footprint.

Q: What are the **fuel** and **water** capacities? A: Fuel capacity is **600 gallons** and fresh water capacity is **170 gallons** , enabling extended periods on board. For detailed advice and current listings, contact Andrey Shestakov and the Shestakov Yacht Sales team.

Owner Experience Review

Owners and brokers frequently describe the 53 Classic by NAVIGATOR as a dependable choice for family cruising and longer-term liveaboard use. Many listings show a 3-stateroom/2-head configuration, and owners often refer to the model as a "perfect cruiser and live-aboard."

The salon is routinely characterized as modest in scale but bright, benefiting from ample natural light, while the galley-forward layout draws praise for its size — regularly called "huge" — and commonly includes a double sink and an upright refrigerator.

On the water, the modified-V hull with approximately 15 degrees of deadrise is credited with delivering a comfortable, steady ride and assured handling. Performance varies with engine fit: examples fitted with Volvo TAMD74 (430 hp) are typically quoted around an 18–20-knot cruise, while earlier TAMD63-equipped boats are often reported near a 14-knot cruise and about 22 knots at full throttle. Listings and owner commentary usually summarize

the package as offering reliable power and solid performance.

Practical maintenance considerations appear throughout listings. Many boats highlight a roomy engine room accessed via a dedicated hatch through the galley sole, and common refit items seen in sale histories include replacements for dripless shaft seals, new battery banks, and generator overhauls or swaps. Buyers have sometimes noted the lack of a fixed fire-suppression system during surveys, and aging electronics suites (for example, Garmin 4212/NavNet2) are frequent—owners commonly advise phased upgrades rather than wholesale replacements. One owner also mentions the boat deck is fairly small for the platform and will only accept a small inflatable.

Pros and Cons

- Versatile interior arrangement with three staterooms and two heads supports family cruising and live-aboard lifestyles.
- Generous cockpit and wrap-around flybridge seating facilitate entertaining.
- Large engine room with dedicated galley-floor access eases routine maintenance.
- Boat deck capacity is limited, typically accommodating only a small inflatable.
- Older electronics packages are common and benefit from staged MFD and radar upgrades.
- Some buyers have noted the absence of a fixed fire suppression system on inspected vessels.

Comparison with Other Models

Model	LOA	Beam	Draft	Speed (Cruising/Max)	Gross Tonnage
336	33' 0" (10.21 m)	11' 0" (3.63 m)	9' 4" (2.83 m)	20 kn / 30 kn	
5800	58' 0" (17.68 m)	17' 0" (5.26 m)		15 kn / 18 kn	

5600 Pilothouse	56' 0" (17.07 m)	15' 0" (4.57 m)	18' 1" (5.50 m)		
5700 Rival	57' 0" (17.37 m)	15' 0" (4.57 m)	15' 0" (4.58 m)		
53 Classic	53' 0" (16.15 m)	15' 0" (4.57 m)		18 kn	
3900 Californian	40' 0" (12.19 m)	15' 0" (4.57 m)	13' 8" (4.17 m)	10 kn / 18 kn	

SPECIFICATIONS

LOA:

53' 0" (16.15 m)

Cruise Speed:

18 kn / 20.71 mph

Fuel Capacity:

600 Gallons

Sleeps:

4

Hull Material:

Fiberglass and Plastic Yachts

Engines:

2

Engine Type:

Inboard

Beam:

15' 0" (4.57 m)

Water Capacity:

170 Gallons

Total Heads:

2

Deck Material:

Fiberglass

Manufacturer:

Volvo Penta

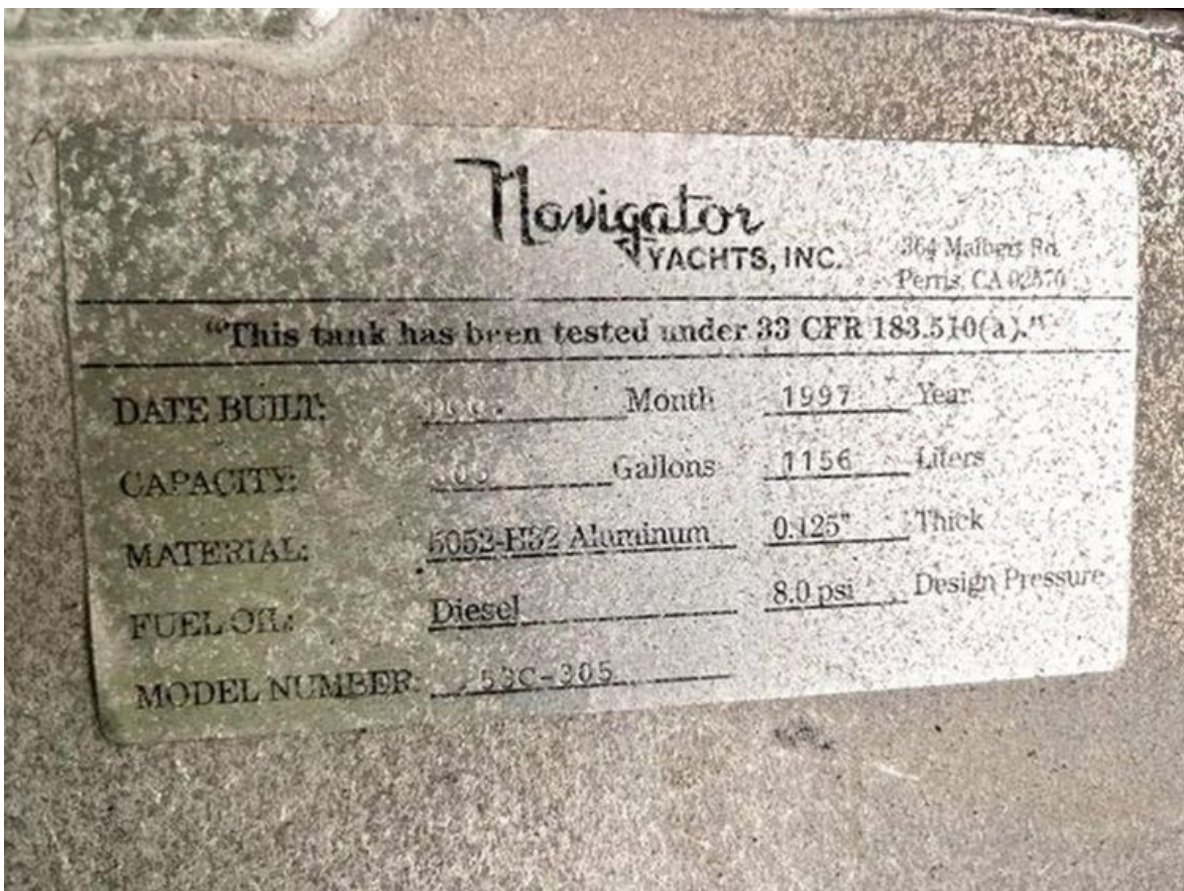
Fuel Type:

Diesel

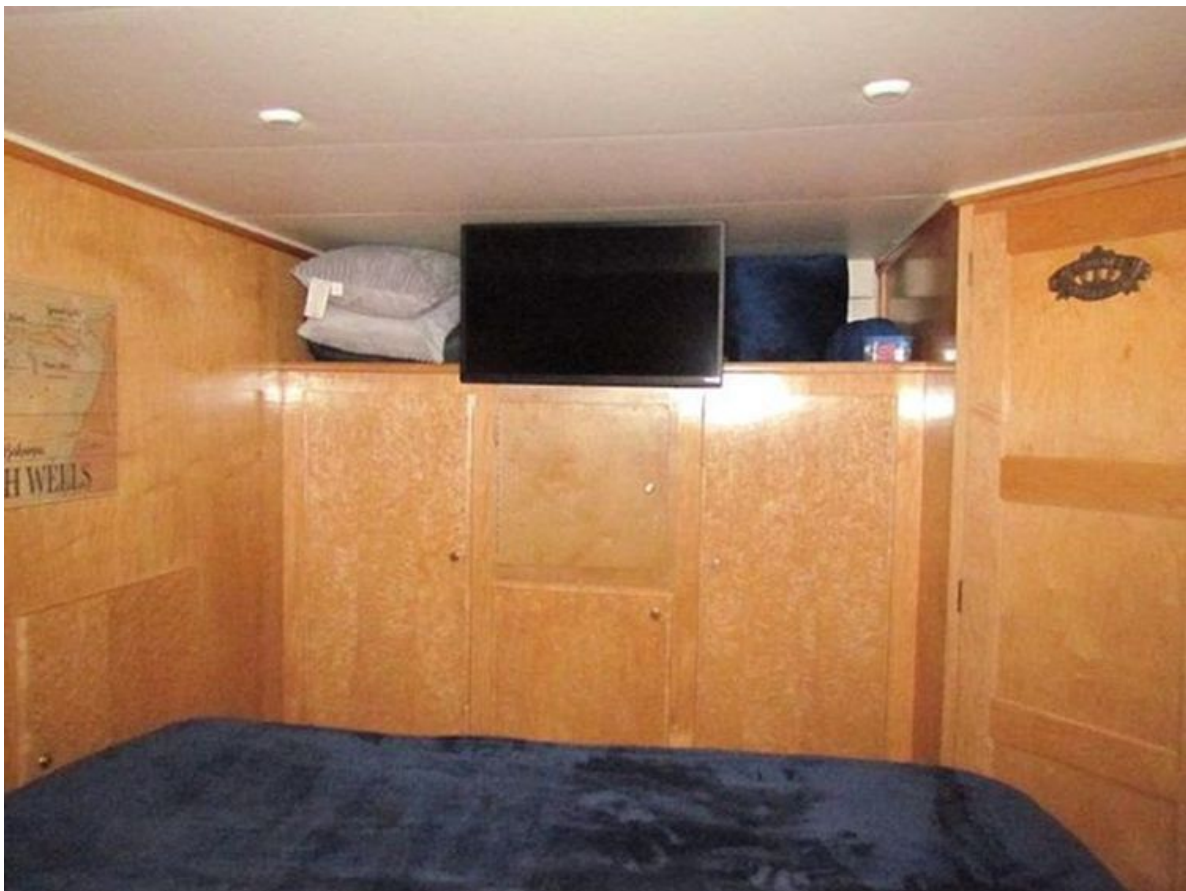
GALLERY











CONTACTS

Shestakov Yacht Sales is a brokerage company specializing in the sale and service of yachts worldwide. The company offers services for buying and selling both new and used motor yachts, sailing vessels, and luxury superyachts. They also provide yacht registration, insurance, technical maintenance, crew selection, and charter organization services across the U.S., Canada, Latin America, the Caribbean, and the Bahamas.

The founder and lead broker of the company is Andrey Shestakov, a licensed and certified expert with extensive experience in marine engineering and shipbuilding.

The company has an extensive network of partnerships with major yacht manufacturers worldwide and provides services in multiple languages, including Russian, Ukrainian, Spanish, and English. The office is in Dania Beach, Florida, USA.

For more information and to view available yachts, you can visit the company's official website: <https://shestakovyachtsales.com>

Contact details

Phone: +1(954)274-4435

Email: andrey@shestakovyachtsales.com

Address



1380 Weeping Willow Way, Hollywood,
Florida 33019