



SHESTAKOV

Yacht Sales

42 SEDAN - OCEAN ALEXANDER



Builder:

Ocean Alexander

Model:

42 Sedan

LOA:

42' 0" (12.80 m)

Beam:

14' 0" (4.47 m)

Total Heads:

1

Hull Material:

Fiberglass and Plastic Yachts

Deck Material:

Fiberglass

Engines:

2

Manufacturer:

Caterpillar

Engine Type:

Inboard

Fuel Type:

Diesel

If you would like to buy a yacht **42 SEDAN - Ocean Alexander** or would like help, please call +1(954)274-4435 or visit shestakovyachtsales.com

TABLE OF CONTENTS

OVERVIEW	3
Selecting a 42 Sedan	3
Features of the Model	3
Technical Specifications	3
Pricing and Ordering	4
Questions and Answers	4
Owner Experience Review	5
Pros and Cons	6
Comparison with Other Models	6
SPECIFICATIONS	8
GALLERY	9
CONTACTS	14

OVERVIEW

42 Sedan by Ocean Alexander is a flexible motor yacht in the cruiser class, constructed on a robust fiberglass-and-plastic construction foundation. Offered through Shestakov Yacht Sales with broker Andrey Shestakov, it melds a compact footprint with twin-diesel propulsion to deliver confidence for coastal passages and weekend runs.

Selecting a 42 Sedan

Opt for the 42 Sedan when you want a yacht that balances a 42 ft (12.8 m) LOA with a broad 14 ft (4.47 m) beam, showcasing Ocean Alexander build quality and reliable Caterpillar inboard diesels. Positioned as a motor yacht in the cruiser category, it appeals to owner-operators and couples seeking straightforward handling, efficient accommodations with a single head, and the longevity of fiberglass-and-plastic construction.

Features of the Model

- Category blend: motor yacht with a cruiser orientation
- Proven power: two Caterpillar inboard diesel engines
- Hull built on fiberglass-and-plastic construction principles; fiberglass deck
- Practical layout with 1 head
- Manageable dimensions for docking and handling

Technical Specifications

- Builder: Ocean Alexander
- Model: 42 Sedan

- Type: motor yacht
- Class: cruiser
- LOA: 42 ft (12.8 m)
- Beam: 14 ft (4.47 m)
- Engines: 2 x Caterpillar; Inboard; Diesel
- Hull: fiberglass-and-plastic construction
- Deck: Fiberglass
- Heads: 1

Pricing and Ordering

For up-to-date pricing, current listings, and availability of the 42 Sedan, reach out to Andrey Shestakov at Shestakov Yacht Sales. We will assist you through selection, pre-purchase survey, and closing, matching your budget and schedule to the right opportunities for this motor yacht cruiser from Ocean Alexander.

Questions and Answers

Q1: What type of yacht is the 42 Sedan? A1: It's a motor yacht configured with the characteristics of a cruiser, designed to offer a mix of comfort and straightforward handling.

Q2: What are the key dimensions of the model? A2: **Dimensions** include an LOA of 42 ft (12.8 m) and a **beam** of 14 ft (4.47 m).

Q3: What powers the yacht? A3: **Engines** are twin **Caterpillar** units with **inboard** installation running on **diesel** fuel.

Q4: What materials are used for the hull and deck? A4: The **hull** features fiberglass-and-plastic construction build, and the **deck** is **fiberglass** .

Q5: How do I purchase through Shestakov Yacht Sales? A5: Contact **Andrey Shestakov** at **Shestakov Yacht Sales** for guidance on **pricing**, **availability**, and a tailored acquisition plan for a 42 Sedan by Ocean Alexander.

Owner Experience Review

Owners most often deploy the 42 Sedan as a family-friendly coastal cruiser or a convenient weekend platform. Common aboard layouts include a forward master and twin guest berths, with a single practical head and shower; this arrangement supports couples with children or occasional guests, and the salon is notable for generous volume for a 42-footer. Many owners personalize the interior—examples include removing a built-in settee for a larger sofa and upgrading navigation electronics—and air conditioning retrofits are frequent. For owners who extend cruising ambitions or live aboard occasionally, additions such as gensets, bow/stern thrusters, and davits are typical upgrades.

Underway behavior correlates strongly with installed power and overall displacement. Vessels outfitted with lower-power Cummins near 250 hp commonly settle into a cruise around 14 knots, whereas yachts fitted with 375 hp Caterpillars often cruise in the 20–21 knot range and can reach roughly 25 knots at top end. The modified-V hull earns praise for a steady feel and comfortable motion in moderate chop, although owners note that acceleration and cruising responsiveness fall off noticeably when the boat is heavily loaded or fully provisioned.

Maintenance reports are candid: many examples retain original Cat 3208/3208T engines or older Detroit diesels that can exhibit oil leaks and head-gasket failures, with some owners reporting scored cylinders and elevated oil consumption. Repowering is a common—but costly—remedy, with community estimates frequently landing in the high tens to low hundreds of

thousands of dollars (typical examples cited around \$150–250k depending on the scope). Some lower-engine oil leaks demand extensive disassembly to access, and routine survey findings often highlight generators, air-conditioning units, and genset wiring as items requiring repair or modernization.

Pros and Cons

- Versatile for family coastal cruising and low-stress weekend use.
- Stable, weight-efficient modified-V hull delivers a comfortable ride in moderate chop.
- Practical two-stateroom layout with a roomy salon; interior lends itself to useful owner modifications and AC retrofits.
- Performance is sensitive to load, with noticeably slower acceleration when fully provisioned.
- Many boats with original Cat 3208/older Detroit engines show leaks and head-gasket issues that can lead to major work or rebuilds.
- Repowers are common and expensive (often cited around \$150–250k), and surveys frequently flag generators, AC units, and genset wiring for upgrades.

Comparison with Other Models

Model	LOA	Beam	Draft	Speed (Cruising/ Max)	Gross Tonnage
42 Sedan	42' 0" (12.80 m)	14' 0" (4.47 m)			
Divergence 45	44' 0" (13.61 m)	13' 0" (4.19 m)	10' 1" (3.08 m)	26 kn / 34 kn	
548 Pilot House	55' 0" (16.76 m)	17' 0" (5.31 m)	14' 6" (4.42 m)	9 kn / 21 kn	
FLYBRIDGE	70' 0" (21.34 m)	18' 0" (5.64 m)	16' 5" (5 m) – 17' 9" (5.42 m)	18 kn / 24 kn	
70e	70' 0" (21.34 m)	18' 0" (5.54 m)	15' 10" (4.83 m) – 16' 5" (5 m)	21 kn / 25 kn	78000

85E	85' 0" (25.91 m)	20' 0" (6.12 m)	16' 5" (5 m)		
83E	85' 0" (25.91 m)	20' 0" (6.12 m)	19' 5" (5.92 m)		
100 MY	100' 0" (30.68 m)	23' 0" (7.01 m)	18' 1" (5.50 m) – 21' 1" (6.42 m)	19 kn / 22 kn	200
54	54' 0" (16.46 m)	15' 0" (4.57 m)	18' 10" (5.75 m)	10 kn / 12 kn	
Skylounge	100' 0" (30.53 m)	23' 0" (7.01 m)	18' 1" (5.50 m) – 21' 1" (6.42 m)	16 kn / 24 kn	173

SPECIFICATIONS

LOA:

42' 0" (12.80 m)

Total Heads:

1

Hull Material:

Fiberglass and Plastic Yachts

Engines:

2

Engine Type:

Inboard

Beam:

14' 0" (4.47 m)

Deck Material:

Fiberglass

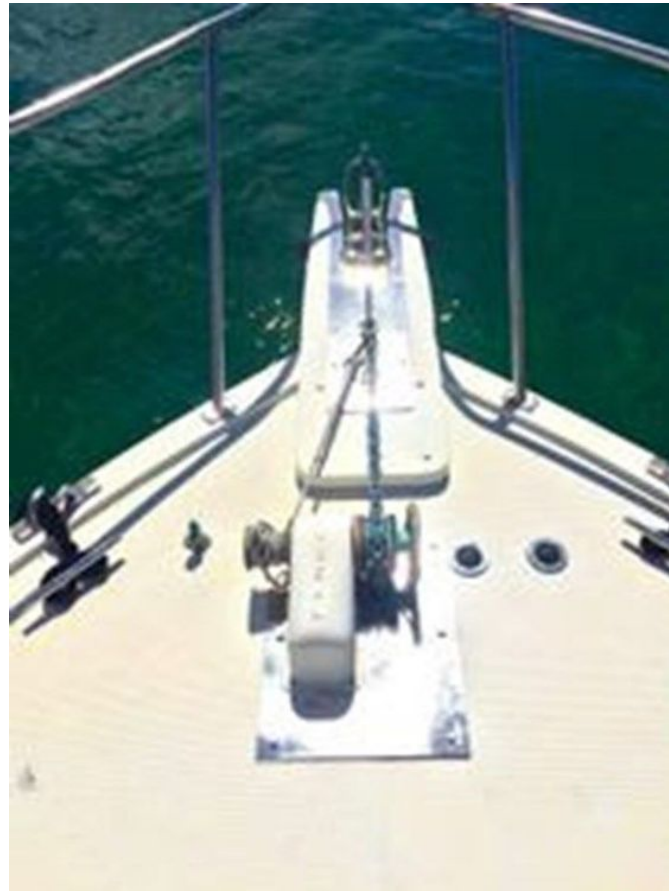
Manufacturer:

Caterpillar

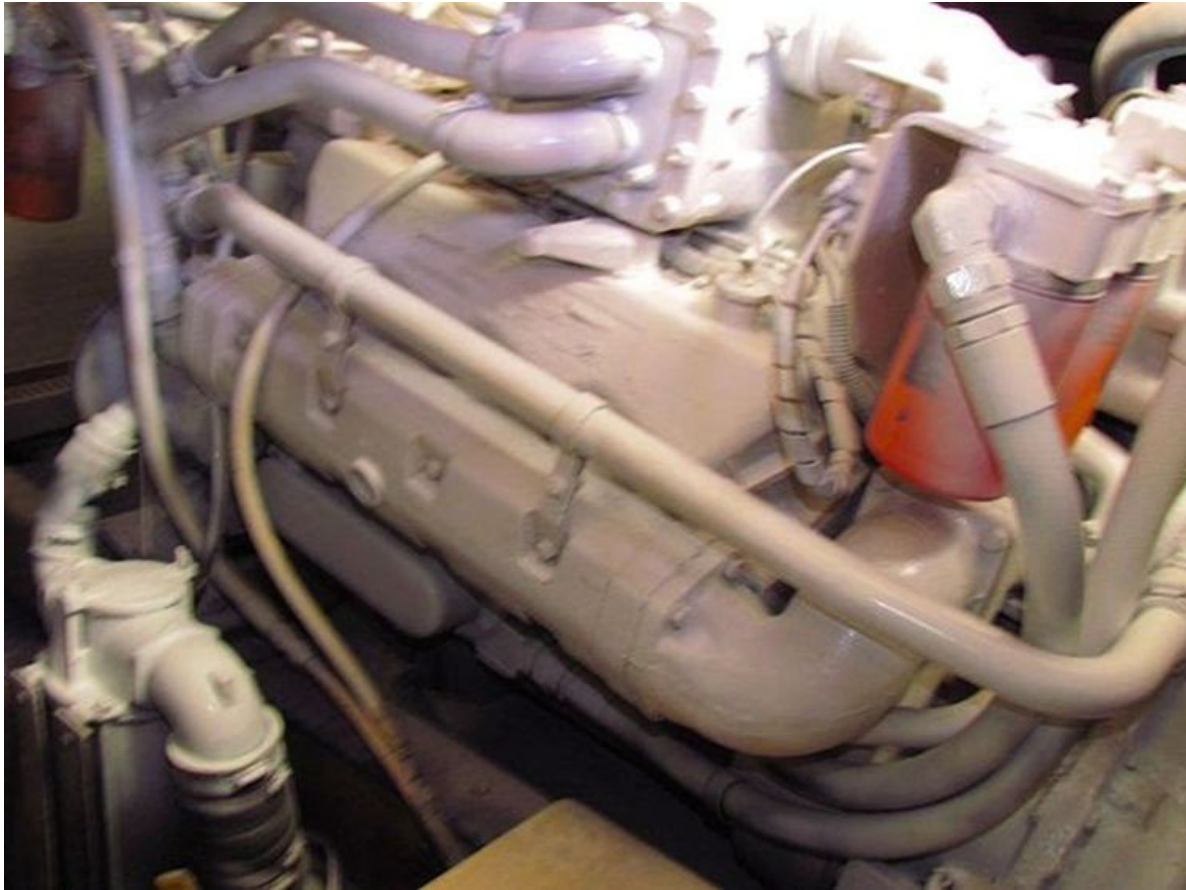
Fuel Type:

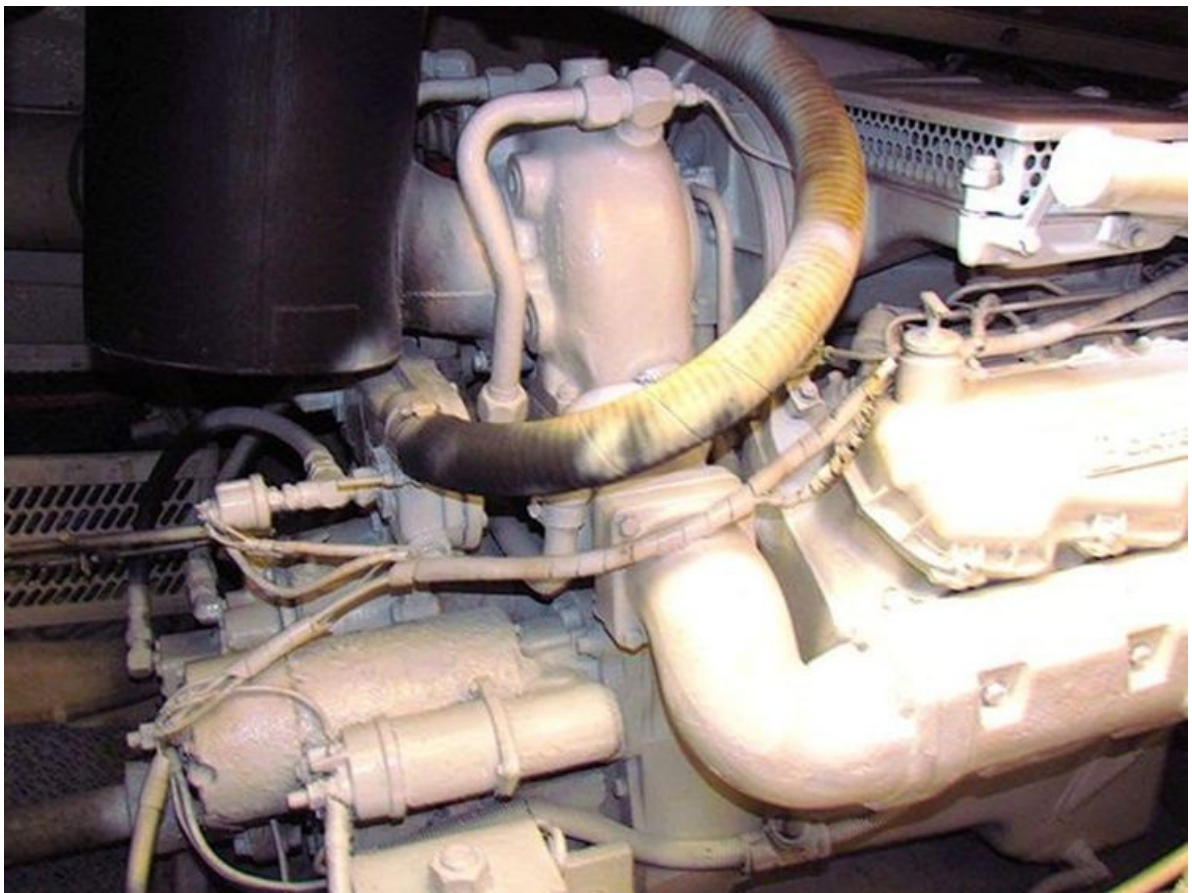
Diesel

GALLERY











CONTACTS

Shestakov Yacht Sales is a brokerage company specializing in the sale and service of yachts worldwide. The company offers services for buying and selling both new and used motor yachts, sailing vessels, and luxury superyachts. They also provide yacht registration, insurance, technical maintenance, crew selection, and charter organization services across the U.S., Canada, Latin America, the Caribbean, and the Bahamas.

The founder and lead broker of the company is Andrey Shestakov, a licensed and certified expert with extensive experience in marine engineering and shipbuilding.

The company has an extensive network of partnerships with major yacht manufacturers worldwide and provides services in multiple languages, including Russian, Ukrainian, Spanish, and English. The office is in Dania Beach, Florida, USA.

For more information and to view available yachts, you can visit the company's official website: <https://shestakovyachtsales.com>

Contact details

Phone: +1(954)274-4435

Email: andrey@shestakovyachtsales.com

Address



1380 Weeping Willow Way, Hollywood,
Florida 33019