



SHESTAKOV

Yacht Sales

DOGE 500 – OCEAN KING



Builder:

OCEAN KING

Model:

Doge 500

LOA:

164' 0" (49.99 m)

Beam:

29' 0" (8.99 m)

Max Draft:

25' 2" (7.67 m)

Cruise Speed:

14 kn / 16.11 mph

Max Speed:

16 kn / 18.41 mph

Gross Tonnage:

499 Pounds

Water Capacity:

3698 Gallons

Fuel Capacity:

17171 Gallons

Total Heads:

8

Crew Cabin:

5

If you would like to buy a yacht **DOGE 500 – OCEAN KING** or would like help, please call +1(954)274-4435 or visit shestakovyachtsales.com

TABLE OF CONTENTS

OVERVIEW	3
Selecting a Doge 500	3
Features of the Model	3
Technical Specifications	4
Pricing and Ordering	4
Questions and Answers	4
Owner Experience Review	5
Pros and Cons	6
Comparison with Other Models	7
SPECIFICATIONS	8
GALLERY	9
CONTACTS	14

OVERVIEW

The Doge 500 from OCEAN KING is a 164 ft (49.99 m) motor yacht built on a steel hull and penned by Design aLOT Studio. Propulsion comes from twin MAN inboard diesel engines, producing a typical cruise of 14 knots (16.11 mph) and a top speed around 16 knots (18.41 mph). With a 29 ft (8.99 m) beam, 499 GT of volume, guest accommodations for 12, eight heads, five crew cabins, and tanks holding 17,171 gal of fuel and 3,698 gal of water, this yacht is configured for confident, comfortable extended time at sea.

Selecting a Doge 500

When assessing a large motor yacht in the motor-yacht class constructed on a steel hull, the Doge 500 appeals to owners who prioritize the strength of steel construction, MAN inboard diesel propulsion, and a balanced 14–16 knot performance envelope. Andrey Shestakov and the team at Shestakov Yacht Sales are available to review specifications, coordinate with the OCEAN KING shipyard, and support you through a smooth acquisition process.

Features of the Model

- Category and construction: a substantial motor yacht with a steel hull from OCEAN KING and styling by Design aLOT Studio.
- Performance profile: twin MAN inboard diesel power yielding a 14 kn cruising speed and a 16 kn top end.
- Volume and comfort: 499 GT of interior volume, a 29 ft (8.99 m) beam, sleeping room for 12 guests, five crew cabins, and eight heads.
- Capacities for longer passages: large tankage with 17,171 gal of fuel and 3,698 gal of fresh water.
- Dimensions and draft: 164 ft (49.99 m) overall length and a maximum draft of

25.164 ft (7.6699 m).

Technical Specifications

- LOA: 164 ft (49.99 m)
- Beam: 29 ft (8.99 m)
- Max draft: 25.164 ft (7.6699 m)
- Gross tonnage: 499 GT
- Speed (cruise/max): 14 kn (16.11 mph) / 16 kn (18.41 mph)
- Engines: 2 x MAN, Inboard, Diesel
- Accommodation: 12
- Heads: 8
- Crew cabins: 5
- Hull material: steel hull
- Deck material: Steel
- Hull designer: Design aLOT Studio
- Fuel capacity: 17,171 gal
- Fresh water capacity: 3,698 gal

Pricing and Ordering

To obtain current pricing, availability, and ordering information for the Doge 500, please contact Andrey Shestakov at Shestakov Yacht Sales. Our brokerage will handle specification confirmations with OCEAN KING, organize the purchase paperwork, and guide you through to closing.

Questions and Answers

Q: What type of yacht is the Doge 500? A: It is a motor yacht in the motor-yacht class built on a steel hull. This combination emphasizes **category** ,

construction , and **durability** .

Q: What are the speeds of the Doge 500? A: The vessel cruises at approximately 14 kn (16.11 mph) and reaches a **maximum speed** near 16 kn (18.41 mph), driven by twin MAN inboard diesel engines.

Q: How many guests and crew can it accommodate? A: The layout provides **accommodation** for 12 guests, supported by 8 **heads** and 5 **crew cabins** to ensure both service and comfort on board.

Q: What are the construction details and design credits? A: The yacht is built on a steel hull with a **Steel** deck, and the hull design is credited to **Design aLOT Studio** .

Q: Who can help me purchase the Doge 500? A: For **inquiries** and purchase guidance, contact Andrey Shestakov and the team at Shestakov Yacht Sales. We will coordinate with OCEAN KING and assist from initial inquiry through the closing process.

Owner Experience Review

Buyers focused on extended range and serious blue water cruising will recognize the Doge 500 from OCEAN KING as a true full displacement expedition yacht. Its stated range—around 4,500 nm at 10 knots—paired with a steel hull featuring a bow bulb and conventional shaft line drive, favors a steady, predictable seakeeping character rather than nimble, sporty handling. Published performance aligns with a comfortable 14 knot cruise and a top speed near 16 knots, and the RINA C classification supports unrestricted offshore operation.

Life aboard is arranged for extended stays and privacy. Approximately 499 GT of volume is laid out to include six guest cabins with dedicated spaces such as a media room and gym/spa, along with expansive outdoor living zones. The

owner's deck includes a private terrace and optional pool features; additional amenities like a retractable stern pool and large folding balconies create what is often described as a "terrace on the sea." Guest and crew flows are thoughtfully separated through dedicated service routes, a dumbwaiter, and distinct deck areas—supporting accommodation for 12 guests alongside berthing for 9 crew suitable for private ownership or charter operations.

Prospective owners should be mindful of the materials and onboard systems. A steel hull mated to an aluminum superstructure requires ongoing paint and corrosion/weld seam inspections, while the extensive systems package—multiple gensets, hydraulic systems for balconies and pools, HVAC, and lifting gear—generates higher maintenance costs and calls for an experienced engineering crew. That said, professional reports highlight good access for service—"the machinery room opens out in full," allowing access to both sides of the main engines. With main engine options like the MAN D2862 or CAT C32, arranging OEM support and specialized service planning is recommended.

Pros and Cons

- Approximate 4,500 nm range at 10 knots supports true transoceanic passages.
- Full displacement steel hull with bow bulb and direct shafts deliver stable, comfortable motion in rough water.
- About 499 GT with 6 cabins, an owner's deck, and retractable pool/balconies creates exceptional privacy and alfresco living.
- Heavy displacement design limits top end speed (published ≈16 kn) and sporty maneuvering.
- Steel hull and aluminum superstructure require regular coatings and corrosion/weld seam inspections.
- Extensive hydraulics, HVAC, cranes, and generators drive higher service costs

and demand an experienced engineering crew.

Comparison with Other Models

Model	LOA	Beam	Draft	Speed (Cruising/Max)	Gross Tonnage
Ducale 120	119' 0" (36.25 m)	27' 0" (8.50 m)	8' 2" (2.49 m)	12.5 kn / 14 kn	358
Explorer 34MT	112' 0" (34.14 m)	25' 0" (7.80 m)	8' 11" (2.67 m)	12 kn / 13 kn	
N/A	163' 0" (49.85 m)	29' 0" (9 m)	7' 9" (2.35 m)	14 kn / 16 kn	499
Ducale 140	140' 0" (42.67 m)	28' 0" (8.59 m)	26' 10" (8.17 m)	13 kn / 15 kn	440
Doge 500	164' 0" (49.99 m)	29' 0" (8.99 m)	25' 2" (7.67 m)	14 kn / 16 kn	499
Doge 400	132' 0" (40.23 m)	27' 0" (8.23 m)	26' 3" (8 m)	10 kn / 15 kn	430
Explorer 130	130' 0" (39.62 m)	33' 0" (10.21 m)	38' 10" (11.83 m)	12 kn / 14 kn	500
Doge 350	114' 0" (34.75 m)	27' 0" (8.31 m)	24' 7" (7.50 m)	12.5 kn / 14.5 kn	365

SPECIFICATIONS

LOA:

164' 0" (49.99 m)

Max Draft:

25' 2" (7.67 m)

Cruise Speed:

14 kn / 16.11 mph

Gross Tonnage:

499 Pounds

Fuel Capacity:

17171 Gallons

Total Heads:

8

Hull Material:

Steel Yachts

Hull Designer:

Design aLOT Studio

Engines:

2

Engine Type:

Inboard

Beam:

29' 0" (8.99 m)

Max Speed:

16 kn / 18.41 mph

Water Capacity:

3698 Gallons

Crew Cabin:

5

Deck Material:

Steel

Manufacturer:

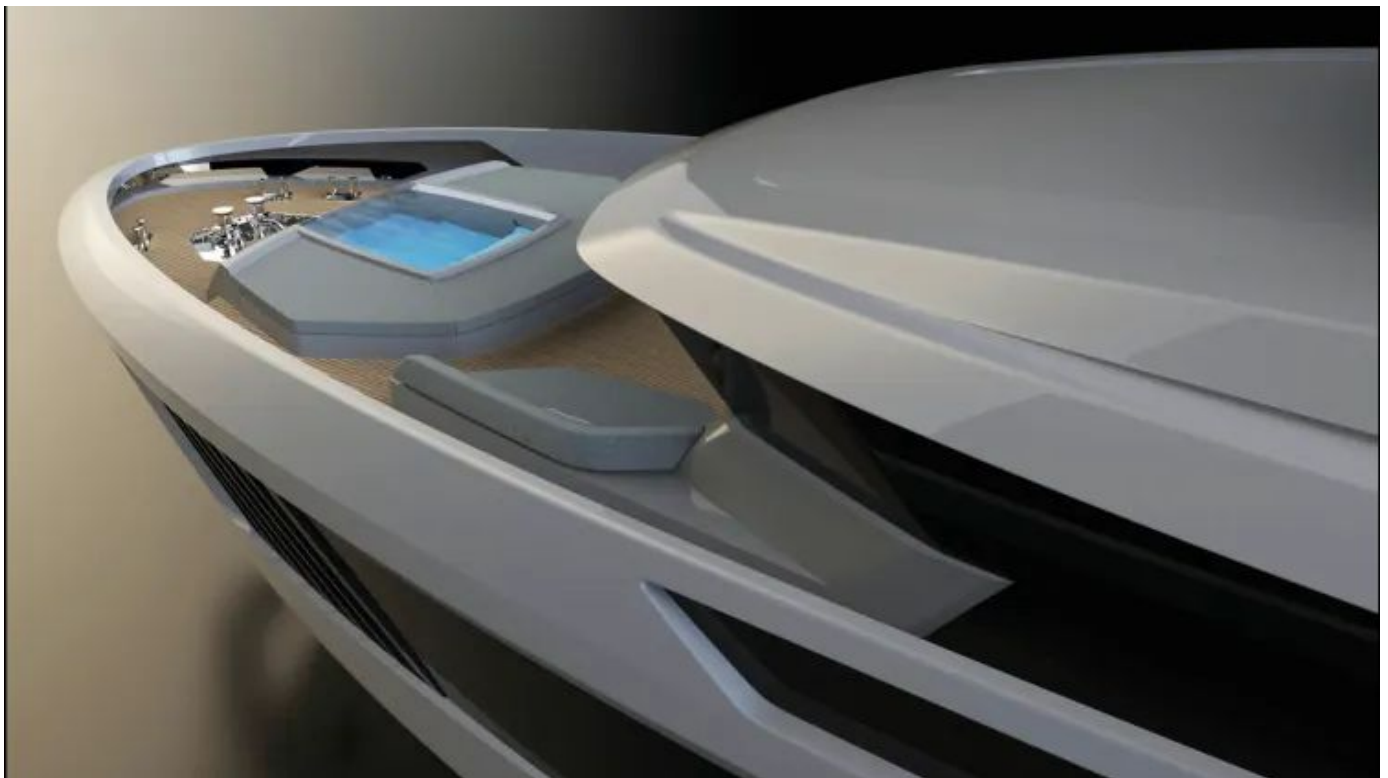
MAN

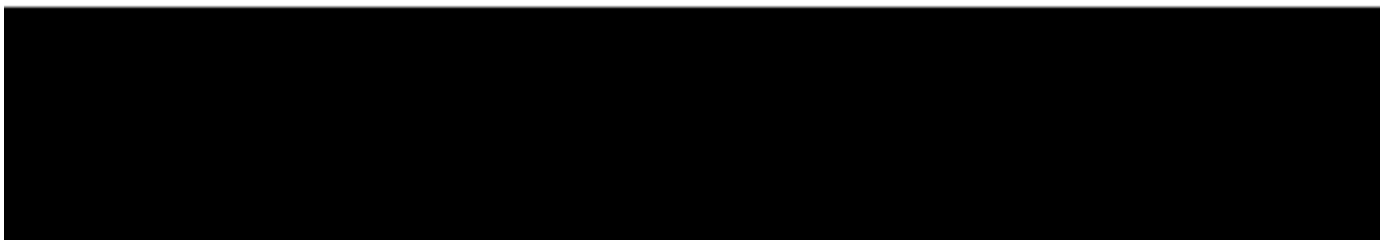
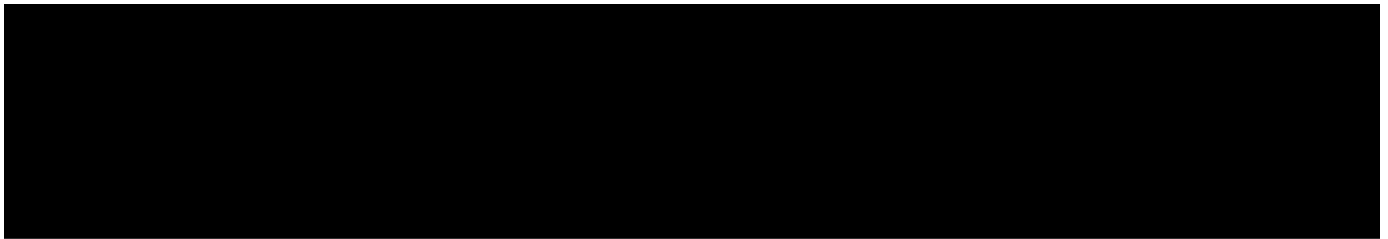
Fuel Type:

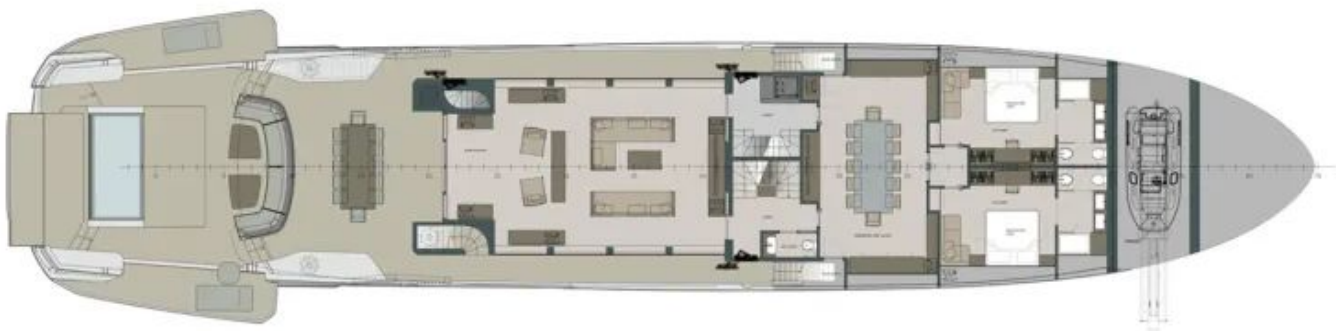
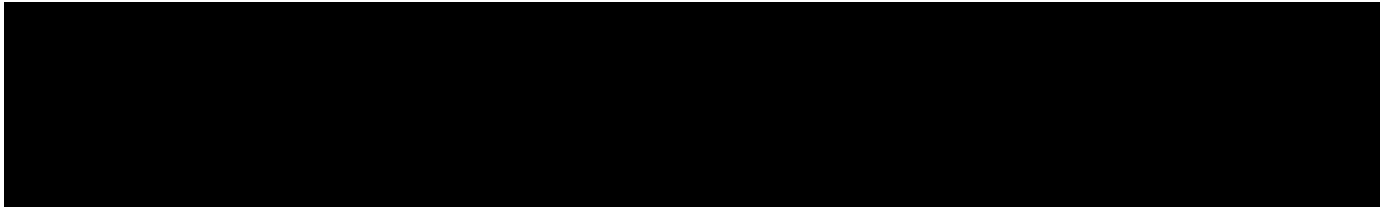
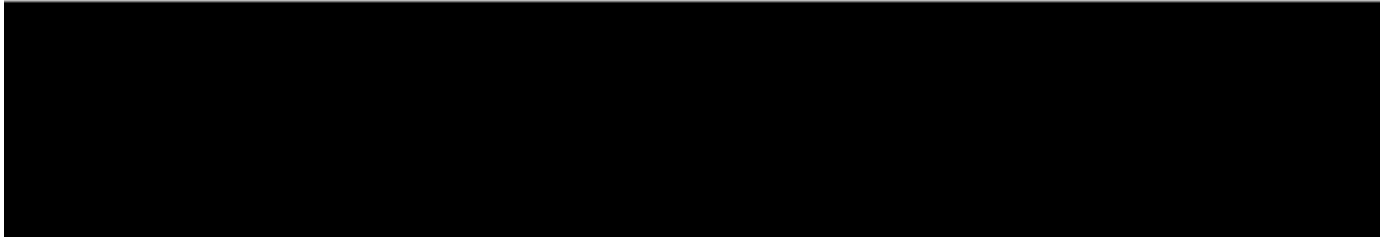
Diesel

GALLERY











CONTACTS

Shestakov Yacht Sales is a brokerage company specializing in the sale and service of yachts worldwide. The company offers services for buying and selling both new and used motor yachts, sailing vessels, and luxury superyachts. They also provide yacht registration, insurance, technical maintenance, crew selection, and charter organization services across the U.S., Canada, Latin America, the Caribbean, and the Bahamas.

The founder and lead broker of the company is Andrey Shestakov, a licensed and certified expert with extensive experience in marine engineering and shipbuilding.

The company has an extensive network of partnerships with major yacht manufacturers worldwide and provides services in multiple languages, including Russian, Ukrainian, Spanish, and English. The office is in Dania Beach, Florida, USA.

For more information and to view available yachts, you can visit the company's official website: <https://shestakovyachtsales.com>

Contact details

Phone: +1(954)274-4435

Email: andrey@shestakovyachtsales.com

Address



1380 Weeping Willow Way, Hollywood,
Florida 33019