



SHESTAKOV

Yacht Sales

## EXPLORER 130 – OCEAN KING



**Builder:**

OCEAN KING

**Model:**

Explorer 130

**LOA:**

130' 0" (39.62 m)

**Beam:**

33' 0" (10.21 m)

**Max Draft:**

38' 10" (11.83 m)

**Cruise Speed:**

12 kn / 13.81 mph

**Max Speed:**

14 kn / 16.11 mph

**Gross Tonnage:**

500 Pounds

**Water Capacity:**

5548 Gallons

**Fuel Capacity:**

51254 Gallons

**Crew Cabin:**

5

**Hull Material:**

Steel Yachts

If you would like to buy a yacht **EXPLORER 130 – OCEAN KING** or would like help, please call +1(954)274-4435 or visit [shestakovyachtsales.com](http://shestakovyachtsales.com)

---

# TABLE OF CONTENTS

---

<b>OVERVIEW .....</b>	<b>3</b>
<b>Selecting a Explorer 130 .....</b>	<b>3</b>
<b>Features of the Model .....</b>	<b>3</b>
<b>Technical Specifications .....</b>	<b>4</b>
<b>Pricing and Ordering .....</b>	<b>4</b>
<b>Questions and Answers .....</b>	<b>5</b>
<b>Owner Experience Review .....</b>	<b>5</b>
<b>Pros and Cons .....</b>	<b>6</b>
<b>Comparison with Other Models .....</b>	<b>7</b>
<b>SPECIFICATIONS .....</b>	<b>8</b>
<b>GALLERY .....</b>	<b>9</b>
<b>CONTACTS .....</b>	<b>14</b>

## OVERVIEW

---

The Explorer 130 from OCEAN KING is a purpose-built, heavy-duty motor yacht crafted on a steel hull and designed as a full-displacement platform for dependable ocean passagemaking. Offered through Shestakov Yacht Sales, this vessel is handled directly by Andrey Shestakov for clients prioritizing generous volume and proven capability.

### Selecting a Explorer 130

---

Opt for the Explorer 130 if you prefer the security of a steel hull combined with the steady motion of a full-displacement hull, driven by twin CAT inboard diesel engines for dependable power. Configured to welcome as many as 12 guests with five crew cabins, it is well suited to prolonged cruising programs and charter operations. As a motor yacht in the broader motor yachts segment, it balances significant 500 GT volume with practical speeds—12 kn cruising and a 14 kn top end. Contact Andrey Shestakov at Shestakov Yacht Sales to match layout choices and build particulars to your cruising intentions.

### Features of the Model

---

- Category alignment: a bona fide motor yacht within the wider group of motor yachts.
- Structure: robust steel construction featuring a full-displacement hull and a steel deck for long-term durability.
- Power: twin CAT inboard diesel engines providing straightforward, globally serviceable propulsion.
- Volume and capacity: rated at 500 GT gross tonnage with ample fuel and freshwater tanks to support extended itineraries.
- Guest and crew planning: layout options accommodate up to 12 guests and

include five crew cabins to support professional service levels.

- Practical performance: designed for a 12 kn cruise (approximately 13.81 mph) and a 14 kn maximum (approximately 16.11 mph).

## Technical Specifications

---

- Builder: OCEAN KING
- Model: Explorer 130
- Class: motor yachts; Subclass: motor yacht
- Hull: steel; Configuration: Full Displacement; Deck: Steel
- LOA: 130 ft (39.62 m)
- Beam: 33 ft (10.21 m)
- Max Draft: 38.812 ft (11.83 m)
- Gross Tonnage: 500 GT
- Engines: 2 x CAT, Inboard, Diesel
- Cruise Speed: 12 kn (13.81 mph)
- Max Speed: 14 kn (16.11 mph)
- Accommodation: up to 12
- Crew Cabins: 5
- Fuel Capacity: 51,254 gal
- Fresh Water Capacity: 5,548 gal

## Pricing and Ordering

---

To receive up-to-date pricing, configuration options, and availability for the Explorer 130 by OCEAN KING, reach out to Andrey Shestakov at Shestakov Yacht Sales. Our brokers will assist with specifications, lead times, and coordinating surveys to suit your acquisition timeline.

---

## Questions and Answers

---

Q: What type of yacht is the Explorer 130? A: It is a motor yacht categorized within the broader motor yachts segment and constructed on a steel hull platform to support robust cruising.

Q: Who is the builder of this model? A: The Explorer 130 is produced by OCEAN KING. Shestakov Yacht Sales, led by Andrey Shestakov, will guide buyers through spec reviews and the purchase process.

Q: What performance should I expect? A: **Performance** is quoted as a 12 kn cruise (about 13.81 mph) with a 14 kn top speed (about 16.11 mph), powered by twin **CAT** inboard **diesel** engines and a full displacement hull tuned for steady, composed passages.

Q: How many people can it accommodate? A: **Accommodation** is configured for up to 12 guests, while **crew** support is provided via five dedicated cabins to ensure professional onboard service throughout longer voyages.

Q: What are the key construction and capacity details? A: The yacht is built with a **steel** deck and steel hull in a **Full Displacement** arrangement, and carries substantial **capacities** —approximately 51,254 gal of fuel and 5,548 gal of potable water—to support extended range planning with advice from Shestakov Yacht Sales.

---

## Owner Experience Review

---

Owners are drawn to the Explorer 130 from OCEAN KING for its original intent: long-distance family exploration with charter potential and ocean-crossing capability. One early comment captured the sentiment: "I was looking for a displacement boat between 35 and 40 metres...40 metres is probably the maximum size that allows you to have fun." When underway, the

hull—adapted from a supply vessel with a bulbous bow and modified stern—feels broad and reassuringly stable, while the raised pilothouse supplies unobstructed 360° sightlines.

For true bluewater plans, range figures headline the package: roughly 9,000 nm at 10 kn and more than 10,000 nm at 8 kn after the refit. Interior volume from the wide beam delivers an upper-deck full beam owner's stateroom and spacious guest cabins, with a layout that leans practical and home-like—think a well-appointed galley with orange Corian surfaces and Miele appliances—rather than ultra-luxurious finishes. Beneath decks, the commercial-strength steel construction, heavy-duty systems, and twin Caterpillar C32s are selected for reliability and worldwide support, though the large engine room and the scale of the machinery influence maintenance planning. Public owner reports on the model are limited and no widespread defects were identified in available research.

## Pros and Cons

---

- Transoceanic capability with an advertised range of approximately 9,000 nm at 10 kn and over 10,000 nm at 8 kn following modifications.
- Wide, stable hull form with excellent seakeeping and a pilothouse that provides 360° visibility.
- Built to commercial standards with twin Caterpillar C32s and robust systems that can be serviced globally.
- Relatively modest top speed around 13–14 kn compared with faster planing yachts.
- The size and industrial nature of systems increase the demands for space and planning in maintenance.
- Interior design favors a practical, residential aesthetic over high-gloss opulence, which may not appeal to every buyer.

## Comparison with Other Models

Model	LOA	Beam	Draft	Speed (Cruising/Max)	Gross Tonnage
Ducale 120	119' 0" (36.25 m)	27' 0" (8.50 m)	8' 2" (2.49 m)	12.5 kn / 14 kn	358
Explorer 34MT	112' 0" (34.14 m)	25' 0" (7.80 m)	8' 11" (2.67 m)	12 kn / 13 kn	
N/A	163' 0" (49.85 m)	29' 0" (9 m)	7' 9" (2.35 m)	14 kn / 16 kn	499
Ducale 140	140' 0" (42.67 m)	28' 0" (8.59 m)	26' 10" (8.17 m)	13 kn / 15 kn	440
Doge 500	164' 0" (49.99 m)	29' 0" (8.99 m)	25' 2" (7.67 m)	14 kn / 16 kn	499
Doge 400	132' 0" (40.23 m)	27' 0" (8.23 m)	26' 3" (8 m)	10 kn / 15 kn	430
Explorer 130	130' 0" (39.62 m)	33' 0" (10.21 m)	38' 10" (11.83 m)	12 kn / 14 kn	500
Doge 350	114' 0" (34.75 m)	27' 0" (8.31 m)	24' 7" (7.50 m)	12.5 kn / 14.5 kn	365

# SPECIFICATIONS

---

**LOA:**

130' 0" (39.62 m)

**Max Draft:**

38' 10" (11.83 m)

**Cruise Speed:**

12 kn / 13.81 mph

**Gross Tonnage:**

500 Pounds

**Fuel Capacity:**

51254 Gallons

**Crew Cabin:**

5

**Hull Material:**

Steel Yachts

**Hull Configuration:**

Full Displacement

**Engines:**

2

**Engine Type:**

Inboard

**Beam:**

33' 0" (10.21 m)

**Max Speed:**

14 kn / 16.11 mph

**Water Capacity:**

5548 Gallons

**Deck Material:**

Steel

**Manufacturer:**

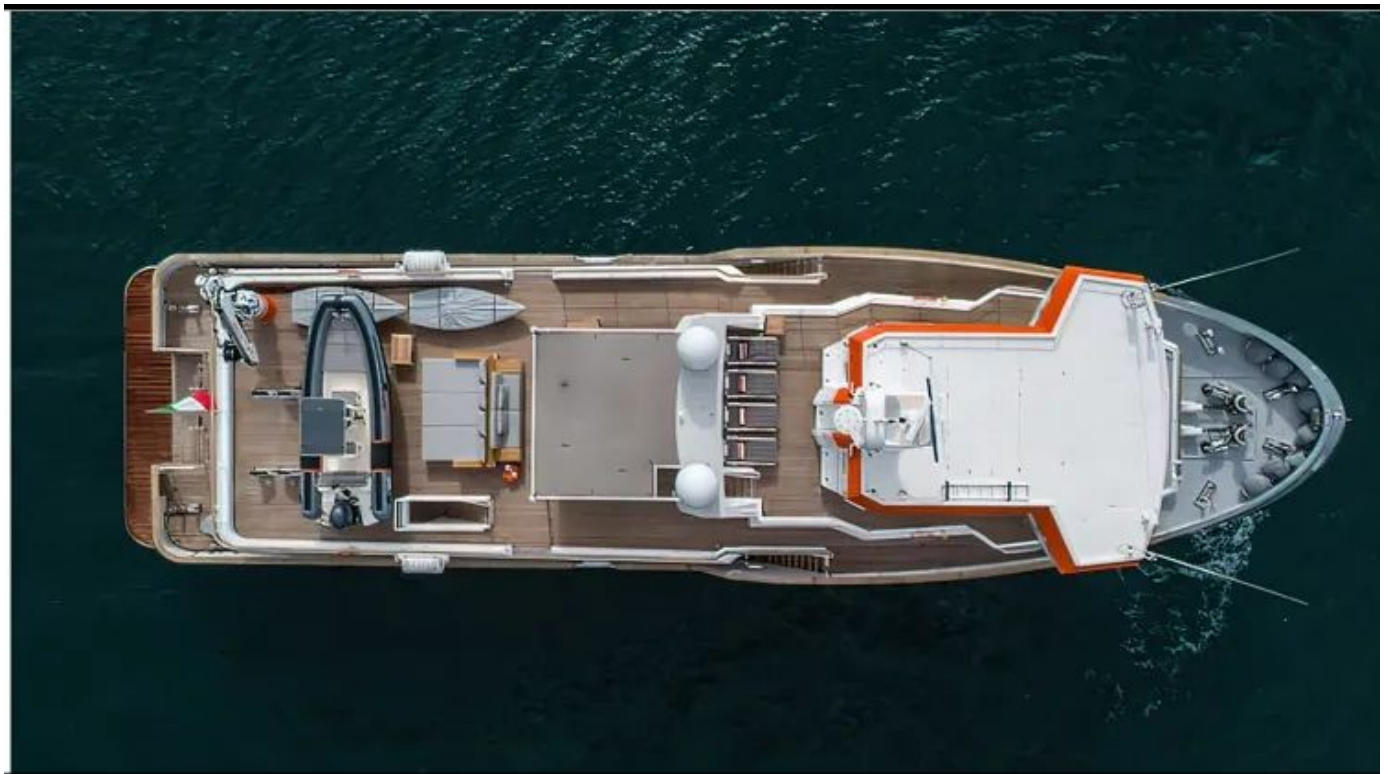
CAT

**Fuel Type:**

Diesel

# GALLERY











# CONTACTS

---

Shestakov Yacht Sales is a brokerage company specializing in the sale and service of yachts worldwide. The company offers services for buying and selling both new and used motor yachts, sailing vessels, and luxury superyachts. They also provide yacht registration, insurance, technical maintenance, crew selection, and charter organization services across the U.S., Canada, Latin America, the Caribbean, and the Bahamas.

The founder and lead broker of the company is Andrey Shestakov, a licensed and certified expert with extensive experience in marine engineering and shipbuilding.

The company has an extensive network of partnerships with major yacht manufacturers worldwide and provides services in multiple languages, including Russian, Ukrainian, Spanish, and English. The office is in Dania Beach, Florida, USA.

For more information and to view available yachts, you can visit the company's official website: <https://shestakovyachtsales.com>

## Contact details

---

**Phone:** +1(954)274-4435

**Email:** [andrey@shestakovyachtsales.com](mailto:andrey@shestakovyachtsales.com)

## Address

---



1380 Weeping Willow Way, Hollywood,  
Florida 33019