



SHESTAKOV

Yacht Sales

## 52 SPORTFISH - OCEAN YACHTS



**Builder:**

OCEAN YACHTS

**Model:**

52 Sportfish

**LOA:**

52' 0" (15.85 m)

**Beam:**

16' 0" (4.98 m)

**Max Draft:**

14' 3" (4.33 m)

**Cruise Speed:**

28 kn / 32.22 mph

**Max Speed:**

31 kn / 35.67 mph

**Water Capacity:**

150 Gallons

**Fuel Capacity:**

860 Gallons

**Total Heads:**

3

**Hull Material:**

Fiberglass and Plastic Yachts

**Deck Material:**

Fiberglass

If you would like to buy a yacht **52 SPORTFISH - OCEAN YACHTS** or would like help, please call +1(954)274-4435 or visit [shestakovyachtsales.com](http://shestakovyachtsales.com)

---

# TABLE OF CONTENTS

---

<b>OVERVIEW .....</b>	<b>3</b>
<b>Selecting a 52 Sportfish .....</b>	<b>3</b>
<b>Features of the Model .....</b>	<b>3</b>
<b>Technical Specifications .....</b>	<b>4</b>
<b>Pricing and Ordering .....</b>	<b>4</b>
<b>Questions and Answers .....</b>	<b>4</b>
<b>Owner Experience Review .....</b>	<b>5</b>
<b>Pros and Cons .....</b>	<b>6</b>
<b>Comparison with Other Models .....</b>	<b>6</b>
<b>SPECIFICATIONS .....</b>	<b>8</b>
<b>GALLERY .....</b>	<b>9</b>
<b>CONTACTS .....</b>	<b>14</b>

## OVERVIEW

---

The 52 Sportfish from OCEAN YACHTS is a purpose-built motor yacht tailored for dedicated anglers, constructed on a robust fiberglass and plastic foundation. At Shestakov Yacht Sales, broker Andrey Shestakov offers one-on-one support to match this platform to your fishing goals and cruising plans.

### Selecting a 52 Sportfish

---

Opting for the 52 Sportfish signals a preference for dependable offshore capability and fishing-focused design. With twin MTU inboard diesel power delivering a 28 knot cruise and a 31 knot top speed, plus substantial fuel and water reserves, the 52 Sportfish strikes a balance between range, speed, and everyday functionality. If you require a motor yacht laid out specifically as a sport fisherman on a durable fiberglass and plastic hull, this model warrants serious consideration in partnership with Shestakov Yacht Sales and broker Andrey Shestakov.

### Features of the Model

---

- Dedicated fish-and-cruise capability driven by twin MTU inboard diesel engines.
- Reliable performance with a 28 knot cruising speed and a 31 knot maximum.
- Sturdy fiberglass and plastic hull complemented by a fiberglass deck for longevity and simpler maintenance.
- Practical external proportions (52 ft LOA, 16 ft beam) and a maximum draft of 14.217 ft suitable for offshore operations.
- Onboard endurance supported by 860 gallons of fuel, 150 gallons of water,

and three heads.

## Technical Specifications

---

- Builder: OCEAN YACHTS
- Model: 52 Sportfish
- Classification: motor yacht / sport fisherman
- Hull: fiberglass and plastic; Deck material: Fiberglass
- LOA: 52 ft (15.85 m)
- Beam: 16 ft (4.98 m)
- Max draft: 14.217 ft (4.3333 m)
- Engines: 2 × MTU, Inboard, Diesel
- Cruising speed: 28 kn (32.22 mph)
- Maximum speed: 31 kn (35.67 mph)
- Fuel capacity: 860 gal
- Water capacity: 150 gal
- Heads: 3

## Pricing and Ordering

---

Price and availability details for the 52 Sportfish are supplied upon request. Contact Shestakov Yacht Sales to review current listings, schedule inspections, and determine the most effective route to purchase. Broker Andrey Shestakov will manage valuations, coordinate viewings, and guide negotiations to align with your objectives.

## Questions and Answers

---

Q: What is the yacht type of the 52 Sportfish? A: The 52 Sportfish is a **motor yacht** configured as a **sport fisherman** and built with a **fiberglass and plastic**

hull.

Q: Who builds the 52 Sportfish and what powers it? A: It is manufactured by **OCEAN YACHTS** and propelled by **2 MTU inboard diesel** engines for consistent offshore performance.

Q: What are the key **performance** figures? A: Anticipate a **28 kt** cruising pace (32.22 mph) and a **31 kt** top speed (35.67 mph) from the 52 Sportfish.

Q: What are the essential **dimensions** and **draft** ? A: The overall length is **52 ft (15.85 m)** , the beam is **16 ft (4.98 m)** , and the maximum draft is **14.217 ft (4.3333 m)** .

Q: How do I **buy** through Shestakov Yacht Sales? A: Contact Shestakov Yacht Sales and broker **Andrey Shestakov** will present options, arrange inspections, and assist through offers, surveys, and closing for the 52 Sportfish.

## Owner Experience Review

---

Owners and test teams describe the 52 Sportfish from OCEAN YACHTS as swift and reassuring offshore. Marlin's evaluation compared the seaward run to "riding a fast horse," logging roughly 27 kt at 1,700 rpm and a peak near 38.8 kt; owners typically cite a 24–27 kt cruise and estimate about 0.5 nautical miles per gallon at those speeds. Close quarters maneuvering also receives high marks, with one owner describing docking response as "extremely responsive."

Internally, the bi-level salon with its raised galley and the three stateroom, three head arrangement are frequently called comfortable for family use and longer cruises. The capacious flybridge and salon are well suited to weekend entertaining, and one owner noted that the absence of bridge A/C did not detract from their enjoyment.

Tradeoffs tend to appear in service access and in older systems aboard aging

examples. The engine room does not offer stand up headroom and provides limited outboard clearance around the engines, which can make some maintenance tasks awkward. Community threads also flag legacy two cycle Detroit installations and Galley Maid heads as potentially noisy or unreliable, and high hour generators may be cause for concern—items to inspect carefully during survey.

## Pros and Cons

- Quick, confidence building offshore performance with an approximate 24–27 kt cruise and a top near ~38.8 kt, plus a notably smooth ride downsea.
- Tournament capable cockpit outfitted with fish boxes, baitwells, and a dedicated rigging station.
- Highly liveable three stateroom, three head interior with a generous salon and flybridge ideal for entertaining.
- Engine room is tight with no stand up clearance and limited outboard access, complicating some maintenance.
- Owners report limited storage in the master stateroom.
- Older vessels may retain 2 cycle Detroits, Galley Maid heads, or high hour generators that can be noisy, temperamental, and expensive to remedy.

## Comparison with Other Models

Model	LOA	Beam	Draft	Speed (Cruising/...	Gross...
52 Sportfish	52' 0" (15.85 m)	16' 0" (4.98 m)	14' 3" (4.33 m)	28 kn / 31 kn	
55 Super Sport	55' 0" (16.76 m)	16' 0" (4.98 m)	14' 3" (4.33 m)		
Super Sport	60' 0" (18.29 m)	17' 0" (5.18 m)		30 kn / 35 kn	
50 Super Sport	50' 0" (15.24 m)	16' 0" (5.16 m)	13' 1" (4 m) – 15' 7" (4.75 m)	30 kn / 35 kn	
Convertible	58' 0" (17.68 m)	17' 0" (5.33 m)	15' 10" (4.83 m)	30 kn / 36 kn	

---

Sportfish	57' 0" (17.37 m)	16' 0" (5.13 m)	15' 10" (4.83 m)	27 kn / 38 kn	
Sport Fish	40' 0" (12.29 m)	14' 0" (4.32 m)	12' 0" (3.67 m)		
48 Super Sport	48' 0" (14.63 m)	16' 0" (4.88 m)		27 kn / 32 kn	
48 Convertible	48' 0" (14.63 m)	16' 0" (4.88 m)			
55	55' 0" (16.99 m)	16' 0" (4.98 m)			48

# SPECIFICATIONS

---

**LOA:**

52' 0" (15.85 m)

**Max Draft:**

14' 3" (4.33 m)

**Cruise Speed:**

28 kn / 32.22 mph

**Water Capacity:**

150 Gallons

**Total Heads:**

3

**Hull Material:**

Fiberglass and Plastic Yachts

**Engines:**

2

**Engine Type:**

Inboard

**Beam:**

16' 0" (4.98 m)

**Max Speed:**

31 kn / 35.67 mph

**Fuel Capacity:**

860 Gallons

**Deck Material:**

Fiberglass

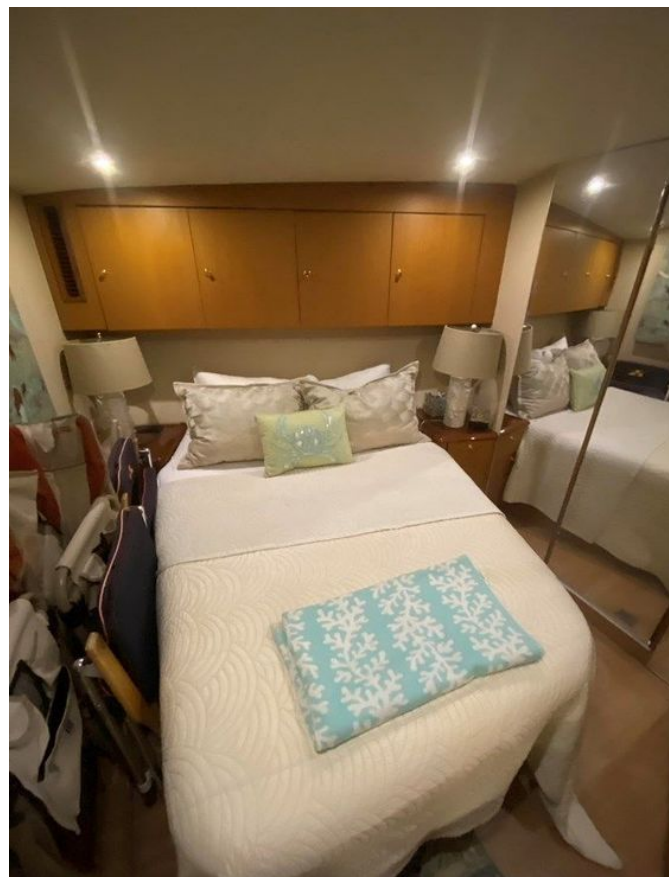
**Manufacturer:**

MTU

**Fuel Type:**

Diesel

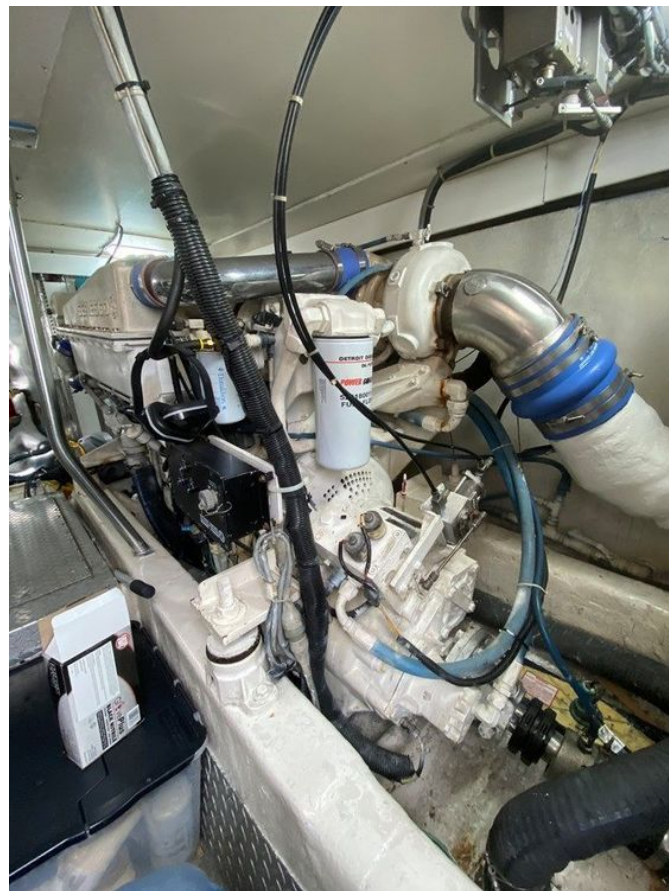
# GALLERY











# CONTACTS

---

Shestakov Yacht Sales is a brokerage company specializing in the sale and service of yachts worldwide. The company offers services for buying and selling both new and used motor yachts, sailing vessels, and luxury superyachts. They also provide yacht registration, insurance, technical maintenance, crew selection, and charter organization services across the U.S., Canada, Latin America, the Caribbean, and the Bahamas.

The founder and lead broker of the company is Andrey Shestakov, a licensed and certified expert with extensive experience in marine engineering and shipbuilding.

The company has an extensive network of partnerships with major yacht manufacturers worldwide and provides services in multiple languages, including Russian, Ukrainian, Spanish, and English. The office is in Dania Beach, Florida, USA.

For more information and to view available yachts, you can visit the company's official website: <https://shestakovyachtsales.com>

## Contact details

---

**Phone:** +1(954)274-4435

**Email:** [andrey@shestakovyachtsales.com](mailto:andrey@shestakovyachtsales.com)

## Address

---



1380 Weeping Willow Way, Hollywood,  
Florida 33019