



SHESTAKOV

Yacht Sales

52 FLY - OKEAN YACHTS



Builder:

OKEAN YACHTS

Model:

52 Fly

LOA:

52' 0" (15.85 m)

Beam:

14' 0" (4.39 m)

Max Draft:

13' 8" (4.17 m)

Cruise Speed:

19 kn / 21.86 mph

Max Speed:

24 kn / 27.62 mph

Water Capacity:

176 Gallons

Fuel Capacity:

442 Gallons

Total Heads:

2

Hull Material:

Fiberglass and Plastic Yachts

Deck Material:

Fiberglass

If you would like to buy a yacht **52 FLY - OKEAN YACHTS** or would like help, please call +1(954)274-4435 or visit shestakovyachtsales.com

TABLE OF CONTENTS

OVERVIEW	3
Selecting a 52 Fly	3
Features of the Model	3
Technical Specifications	4
Pricing and Ordering	4
Questions and Answers	4
Owner Experience Review	5
Pros and Cons	6
Comparison with Other Models	6
SPECIFICATIONS	8
GALLERY	9
CONTACTS	14

OVERVIEW

The 52 Fly from OKEAN YACHTS is a modern motor yacht in the motor yachts category. It is built with a fiberglass hull and features a Modified V-Hull layout. This listing is offered by Shestakov Yacht Sales with broker Andrey Shestakov representing the model.

Selecting a 52 Fly

Opt for the 52 Fly when you prioritize a well-rounded blend of performance, economical diesel power, and accommodation designed for family use. Its twin inboard propulsion, Modified V-Hull, and sleeping space for up to 6 with 2 heads make it a suitable choice for owners seeking dependable speed and comfortable cruising within the motor yachts market.

Features of the Model

- Dimensions tuned for versatility: LOA 52 ft (15.85 m), beam 14 ft (4.39 m)
- Draft of 13.681 ft (4.1699 m) contributing to confident onboard stability
- Hull fashioned from fiberglass and plastic with a Modified V-Hull; deck constructed in Fiberglass
- Propulsion: twin Volvo Penta inboard diesel engines for dependable, fuel-efficient cruising
- Performance figures: 19 knots typical cruising (21.86 mph) and a 24 knot top speed (27.62 mph)
- Accommodation arranged for up to 6 guests with 2 heads
- Tankage suited for extended weekends: 442 gal fuel and 176 gal water

Technical Specifications

- Builder: OKEAN YACHTS
- Model: 52 Fly
- Type: motor yacht in the motor yachts class
- Hull material/category: fiberglass and plastic
- Deck material: Fiberglass
- Hull configuration: Modified V-Hull
- LOA: 52 ft (15.85 m)
- Beam: 14 ft (4.39 m)
- Max draft: 13.681 ft (4.1699 m)
- Engines: 2 x Volvo Penta, Inboard, Diesel
- Cruising speed: 19 kn (21.86 mph)
- Maximum speed: 24 kn (27.62 mph)
- Accommodation: up to 6
- Heads: 2
- Fuel capacity: 442 gal
- Water capacity: 176 gal

Pricing and Ordering

For up-to-date pricing, current availability, and customization options for the 52 Fly by OKEAN YACHTS, reach out to Shestakov Yacht Sales. Broker Andrey Shestakov is available to discuss specification choices, delivery schedules, and the purchasing process.

Questions and Answers

Q: What is the cruising speed of the 52 Fly? A: The **cruising speed** is 19 knots (21.86 mph), and the **maximum speed** reaches 24 knots (27.62 mph).

Q: What engines power the yacht? A: The yacht is equipped with **2 x Volvo Penta inboard diesel** engines, providing efficient propulsion characteristic of a motor yacht.

Q: How many people can stay onboard? A: It offers **accommodation for up to 6** and includes **2 heads**, making it well suited for family voyages and hosting guests.

Q: What is the hull made of? A: The hull is built from fiberglass, complemented by a Fiberglass deck and a **Modified V-Hull** form.

Q: What are the main tank capacities? A: Fuel capacity is **442 gallons** and fresh water capacity is **176 gallons**, supporting comfortable short cruises and weekend trips.

Owner Experience Review

Owners who operate their own boats frequently describe the 52 Fly from OKEAN YACHTS as an uncomplicated and welcoming platform for family cruising and weekend socializing. Many remark on its “floating loft” ambiance created by an open-plan main salon that features full-height sliding doors, large glazing, and fold-down side balconies/terraces. The common three-cabin, two-head layout, a generously sized flybridge, a hydraulic swim platform, and options for tender storage or a garage all support a lifestyle focused on indoor-outdoor entertaining.

On the water, handling is reported as predictable and user-friendly, especially when fitted with twin Volvo Penta D8 IPS pods and joystick steering; the optional Dynamic Positioning (Skyhook) is often praised for simplifying tight maneuvers. Typical cruising speeds fall in the 18–20 knot range with a noted maximum close to 24 knots, and owners often credit a Seakeeper 6 with significantly reducing roll at anchor and enhancing underway comfort. Stated

fuel capacities in market listings (about 442–475 gallons) allow for coastal passages and trips beyond day runs.

Serviceability is considered owner-friendly, with a large gas-assisted aft deck hatch providing access down a ladder to a well-finished engine room coated in Awlgrip. Routine maintenance items usually include IPS pod service, Seakeeper upkeep, and generator servicing; many brokered boats include transferable or extended warranties. Publicly available information does not indicate systemic model-specific failures, and construction choices such as a vinyl-ester hull, an Awlgrip-finished engine space, and bronze through-hulls are intended to reduce long-term maintenance exposure.

Pros and Cons

- Open, loft-like salon with full-height doors, large windows, and fold-out terraces creates expansive social areas.
- IPS joystick control with optional Dynamic Positioning provides predictable, simple close-quarters handling.
- Seakeeper 6 stabilization noticeably reduces roll and raises comfort both at anchor and underway.
- Typical cruise around 18–20 kn with a reported maximum near 24 kn places its performance in a moderate speed bracket.
- Routine servicing for IPS pods, Seakeeper, and generator contributes to the ongoing maintenance schedule.
- Fuel capacity noted (~442–475 gal in listings) supports coastal cruising and occasional longer hops rather than long-range passagemaking.

Comparison with Other Models

Model	LOA	Beam	Draft	Speed (Cruising/Max)	Gross Tonnage
-------	-----	------	-------	----------------------	---------------

57	57' 0" (17.45 m)	15' 0" (4.72 m)	12' 4" (3.75 m)		
52	52' 0" (15.85 m)	14' 0" (4.42 m)	13' 8" (4.17 m)		
80	78' 0" (23.90 m)	19' 0" (6.04 m)	18' 10" (5.75 m)		
55	51' 0" (15.70 m)	15' 0" (4.80 m)	4' 3" (1.30 m)	25 kn / 32 kn	19.77
55S	54' 0" (16.50 m)	15' 0" (4.77 m)	3' 11" (1.20 m)	27 kn / 33 kn	
52 Fly	52' 0" (15.85 m)	14' 0" (4.39 m)	13' 8" (4.17 m)	19 kn / 24 kn	

SPECIFICATIONS

LOA:

52' 0" (15.85 m)

Max Draft:

13' 8" (4.17 m)

Cruise Speed:

19 kn / 21.86 mph

Water Capacity:

176 Gallons

Total Heads:

2

Hull Material:

Fiberglass and Plastic Yachts

Hull Configuration:

Modified V-Hull

Engines:

2

Engine Type:

Inboard

Beam:

14' 0" (4.39 m)

Max Speed:

24 kn / 27.62 mph

Fuel Capacity:

442 Gallons

Deck Material:

Fiberglass

Manufacturer:

Volvo Penta

Fuel Type:

Diesel

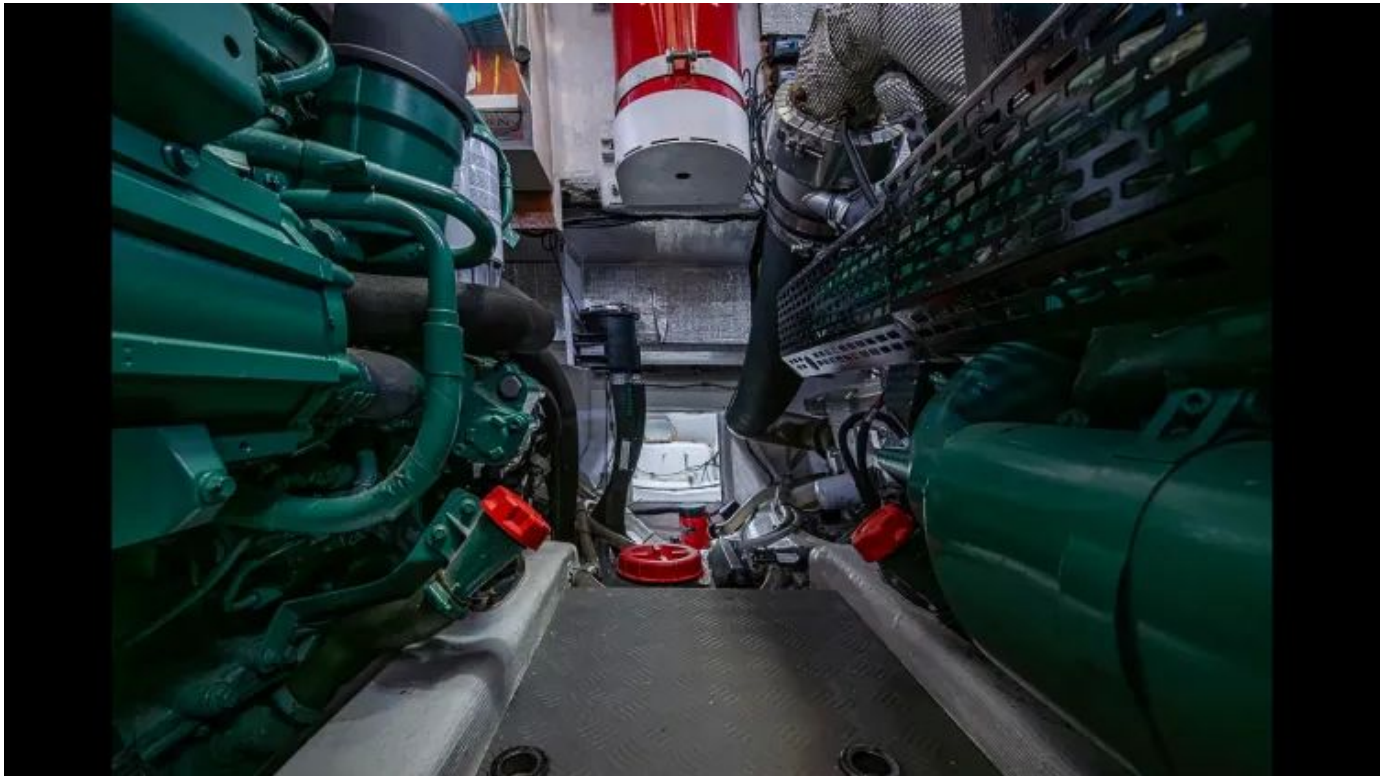
GALLERY











CONTACTS

Shestakov Yacht Sales is a brokerage company specializing in the sale and service of yachts worldwide. The company offers services for buying and selling both new and used motor yachts, sailing vessels, and luxury superyachts. They also provide yacht registration, insurance, technical maintenance, crew selection, and charter organization services across the U.S., Canada, Latin America, the Caribbean, and the Bahamas.

The founder and lead broker of the company is Andrey Shestakov, a licensed and certified expert with extensive experience in marine engineering and shipbuilding.

The company has an extensive network of partnerships with major yacht manufacturers worldwide and provides services in multiple languages, including Russian, Ukrainian, Spanish, and English. The office is in Dania Beach, Florida, USA.

For more information and to view available yachts, you can visit the company's official website: <https://shestakovyachtsales.com>

Contact details

Phone: +1(954)274-4435

Email: andrey@shestakovyachtsales.com

Address



1380 Weeping Willow Way, Hollywood,
Florida 33019