



SHESTAKOV

Yacht Sales

140 - PERSHING



Builder:

PERSHING

Model:

140

LOA:

140' 0" (42.67 m)

Beam:

28' 0" (8.56 m)

Max Draft:

22' 2" (6.75 m)

Cruise Speed:

10 kn / 11.51 mph

Max Speed:

36 kn / 41.43 mph

Water Capacity:

1057 Gallons

Fuel Capacity:

7925 Gallons

Sleeps:

7

Total Heads:

7

Crew Cabin:

4

If you would like to buy a yacht **140 - PERSHING** or would like help, please call +1(954)274-4435 or visit shestakovyachtsales.com

TABLE OF CONTENTS

OVERVIEW	3
Selecting a 140	3
Features of the Model	3
Technical Specifications	4
Pricing and Ordering	5
Questions and Answers	5
Owner Experience Review	5
Pros and Cons	6
Comparison with Other Models	7
SPECIFICATIONS	8
GALLERY	9
CONTACTS	14

OVERVIEW

The PERSHING 140 asserts itself through both size and velocity: a modern motor yacht within the motor yacht category, laid on a sturdy fiberglass and plastic hull with a fiberglass deck. Listed by Andrey Shestakov and the Shestakov Yacht Sales team, this flagship merges high-performance capability with generous internal volume for longer cruises and refined onboard entertaining.

Selecting a 140

Opting for the PERSHING 140 places emphasis on pace and onboard space. Measuring 140 ft (42.67 m) overall with a 28 ft (8.56 m) beam, it projects presence in any harbor while providing comfortable motion underway. With a maximum speed of 36 knots (41.43 mph) and a cruising speed cited at 10 knots (11.51 mph), it spans a broad performance range, and its large fuel and water capacities enable extended legs between ports. Prospective buyers seeking a sizable, contemporary motor yacht built on a proven fiberglass and plastic foundation will find Andrey Shestakov and Shestakov Yacht Sales prepared to assist with specification review, inspections, and purchase negotiations.

Features of the Model

- Performance profile: capable of a 36-knot maximum and a 10-knot cruise, providing flexibility for varied voyage profiles.
- Powertrain: twin MTU inboard diesel engines offer robust thrust and dependable operation.
- Dimensions for comfort: 140 ft (42.67 m) LOA, 28 ft (8.56 m) beam, and a maximum draft of 22.146 ft (6.75 m) designed for roomy interiors and

seakeeping.

- Construction: built on a fiberglass and plastic hull with a fiberglass deck for durability and ease of upkeep.
- Capacity: 7,925 gal fuel and 1,057 gal fresh water to reduce the frequency of refueling and replenishment stops.
- Accommodations: configured for 14 in the accommodation count with sleeping berths for 7 and 7 heads; crew quarters include 4 cabins and 5 beds for professional operation.
- Classification: positioned as a premium motor yacht within the wider motor yachts segment.

Technical Specifications

- Length Overall (LOA): 140 ft (42.67 m)
- Beam: 28 ft (8.56 m)
- Maximum Draft: 22.146 ft (6.75 m)
- Cruising Speed: 10 knots (11.51 mph)
- Maximum Speed: 36 knots (41.43 mph)
- Engines: 2 x MTU, Inboard, Diesel
- Hull: fiberglass and plastic
- Deck: Fiberglass
- Accommodation Count: 14
- Sleeps: 7
- Heads: 7
- Crew Cabins: 4
- Crew Beds: 5
- Water Capacity: 1,057 gal
- Fuel Capacity: 7,925 gal

Pricing and Ordering

To obtain pricing, confirm availability, or begin the ordering process for the PERSHING 140, please reach out to Andrey Shestakov at Shestakov Yacht Sales. Our brokerage coordinates viewings, specification clarifications, vessel surveys, and contract assistance to make the acquisition process as smooth as possible. Whether you are reviewing a current listing or planning a future purchase, we work to align your timeline and requirements with the market for large motor yachts.

Questions and Answers

Q: What type of yacht is the PERSHING 140? A: It is a motor yacht within the broader class of motor yachts, constructed on a fiberglass and plastic hull.

Q: What are the key performance numbers? A: The PERSHING 140 delivers a **cruising speed** of 10 knots (11.51 mph) and a **maximum speed** of 36 knots (41.43 mph).

Q: What engines power this model? A: It is outfitted with **two MTU inboard diesel** engines, providing strong and reliable propulsion.

Q: How many guests and crew can it host? A: The yacht lists an **accommodation count** of 14 with **sleeps** for 7 and **7 heads** ; the crew area comprises **4 crew cabins** and **5 beds** .

Q: What are the tank capacities? A: Expect a **fuel capacity** of 7,925 gal and a **water capacity** of 1,057 gal, supporting longer periods away from port.

Owner Experience Review

Owners tend to favor the PERSHING 140 for rapid hops and family gatherings,

exploiting the main-deck owner's suite and four guest cabins to host comfortably while the galley-down plan keeps the salon uncluttered. The convertible three-sided beach club — offering approximately 2.1 m of headroom plus sliding and swim-platform extensions — is regularly praised as the primary social zone when at anchor. The flybridge includes a well-appointed bar and seating, though crew and service operators sometimes find the working area there compact.

Underway, captains note that at 2,135 rpm the third turbocharger engages and the yacht settles into a 28–29-knot cruise, with fuel consumption near 14 gallons per mile at that pace. In real-world use owners report a typical cruise of 28–30 knots, a “max cruise” near 35 knots, and press citations up to roughly 38 knots at full throttle. Four MTUs on four waterjets (two center boosters fixed, two outer steerable) deliver vigorous acceleration, crisp handling, and low vibration, while the deep-V aluminum hull provides confident motion in waves. In busy or reduced-visibility conditions the flybridge helm is preferred for superior sightlines. Ownership does carry significant operating requirements: a reported shakedown of about 1,800 miles consumed approximately 27,200 gallons, and the waterjet/high-output MTU configuration benefits from certified service technicians; the engine room is tightly packed but well laid out, with direct crew access in the standard plan.

Pros and Cons

- High-speed capability with a realistic 28–30-knot cruise and very strong acceleration thanks to the waterjet arrangement.
- A convertible three-sided beach club with roughly 2.1 m of headroom and extending platforms serves as a standout entertaining space.
- Owner-oriented layout: full-beam main-deck suite, four guest cabins below, and a galley-down configuration that preserves an uncluttered salon.
- Very high fuel consumption and operating expenses; a roughly 1,800-mile

shakedown reportedly used about 27,200 gallons.

- Specialist maintenance required for the waterjet system and high-output MTU package, necessitating certified technicians.
- Flybridge bar and service area are compact and can feel constrained during busy service periods.

Comparison with Other Models

Model	LOA	Beam	Draft	Speed (Cruising/Max)	Gross Tonnage
140	140' 0" (42.67 m)	28' 0" (8.56 m)	22' 2" (6.75 m)	10 kn / 36 kn	
52	52' 0" (15.85 m)	15' 0" (4.70 m)	12' 7" (3.83 m)	35 kn / 46 kn	
50	52' 0" (16 m)	13' 0" (4.15 m)	3' 11" (1.20 m) – 4' 5" (1.35 m)	26 kn / 33 kn	28
9X	92' 0" (28.04 m)	20' 0" (6.22 m)	17' 9" (5.42 m)	35 kn / 42 kn	
64'	65' 0" (20 m)	16' 0" (5 m)	4' 11" (1.50 m)	40 kn / 46 kn	
7X	70' 0" (21.34 m)	17' 0" (5.36 m)	16' 5" (5 m)	42 kn / 50 kn	
8X	80' 0" (24.38 m)	19' 0" (5.87 m)	15' 0" (4.58 m)	38 kn / 48 kn	
PERSHING 92	92' 0" (28.04 m)	20' 0" (6.22 m)	17' 9" (5.42 m)	38 kn / 43 kn	105
54 HT	58' 0" (17.73 m)	15' 0" (4.65 m)	4' 8" (1.42 m)	37 kn / 48 kn	
PERSHING 70	70' 0" (21.34 m)	16' 0" (5.03 m)	14' 9" (4.50 m) – 16' 5" (5 m)	32 kn / 47 kn	48

SPECIFICATIONS

LOA:

140' 0" (42.67 m)

Max Draft:

22' 2" (6.75 m)

Cruise Speed:

10 kn / 11.51 mph

Water Capacity:

1057 Gallons

Sleeps:

7

Crew Cabin:

4

Hull Material:

Fiberglass and Plastic Yachts

Engines:

2

Engine Type:

Inboard

Beam:

28' 0" (8.56 m)

Max Speed:

36 kn / 41.43 mph

Fuel Capacity:

7925 Gallons

Total Heads:

7

Crew Berths:

5

Deck Material:

Fiberglass

Manufacturer:

MTU

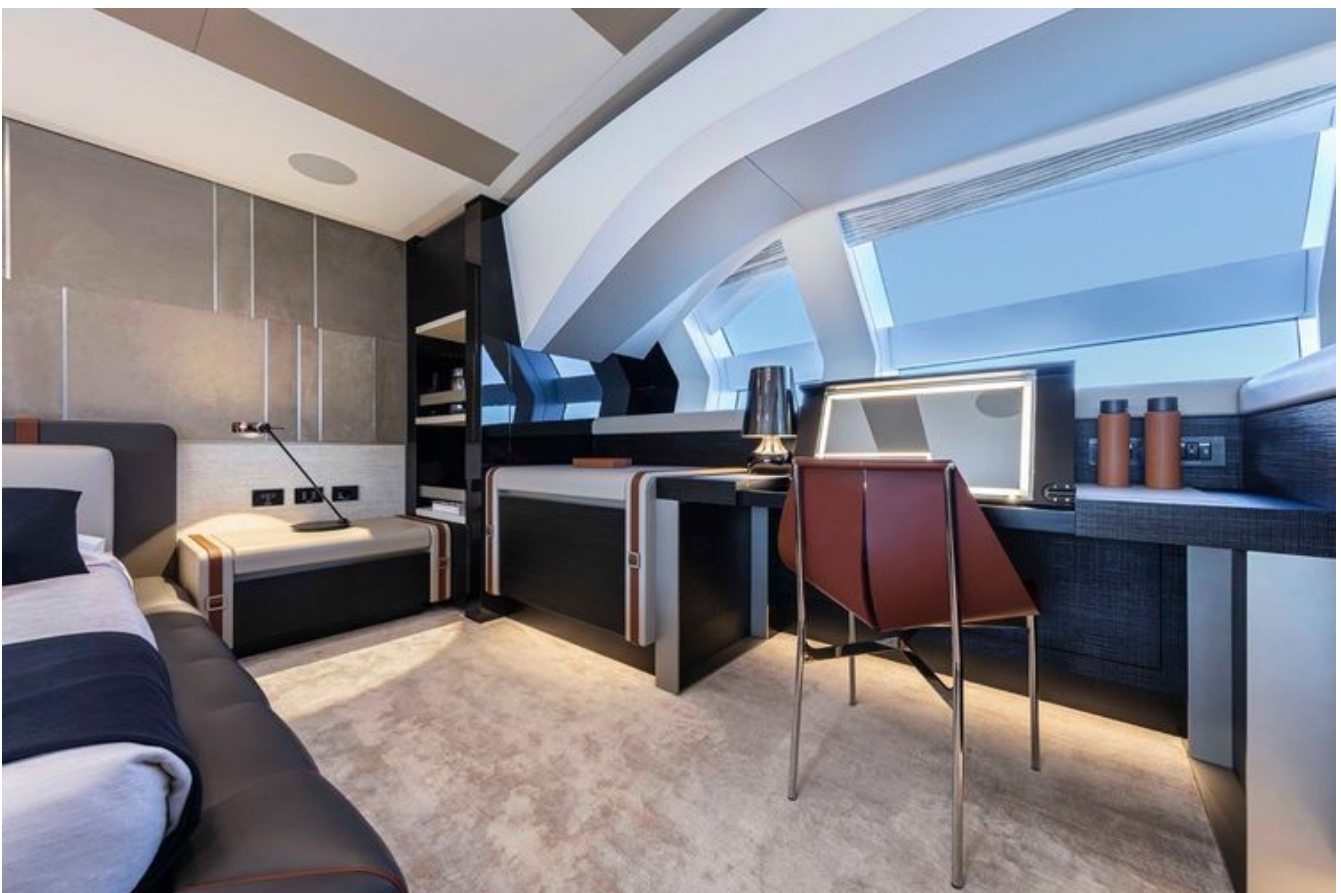
Fuel Type:

Diesel

GALLERY











CONTACTS

Shestakov Yacht Sales is a brokerage company specializing in the sale and service of yachts worldwide. The company offers services for buying and selling both new and used motor yachts, sailing vessels, and luxury superyachts. They also provide yacht registration, insurance, technical maintenance, crew selection, and charter organization services across the U.S., Canada, Latin America, the Caribbean, and the Bahamas.

The founder and lead broker of the company is Andrey Shestakov, a licensed and certified expert with extensive experience in marine engineering and shipbuilding.

The company has an extensive network of partnerships with major yacht manufacturers worldwide and provides services in multiple languages, including Russian, Ukrainian, Spanish, and English. The office is in Dania Beach, Florida, USA.

For more information and to view available yachts, you can visit the company's official website: <https://shestakovyachtsales.com>

Contact details

Phone: +1(954)274-4435

Email: andrey@shestakovyachtsales.com

Address



1380 Weeping Willow Way, Hollywood,
Florida 33019