



SHESTAKOV

Yacht Sales

62 - PERSHING



Builder:

PERSHING

Model:

62

LOA:

60' 0" (18.48 m)

Beam:

16' 0" (5 m)

Max Draft:

3' 7" (1.10 m)

Water Capacity:

237.76 Gallons

Fuel Capacity:

462.3 Gallons

Hull Material:

Fiberglass and Plastic Yachts

Deck Material:

Fiberglass

Hull Configuration:

Planing

Engines:

2

Manufacturer:

MAN

If you would like to buy a yacht **62 - PERSHING** or would like help, please call +1(954)274-4435 or visit shestakovyachtsales.com

TABLE OF CONTENTS

OVERVIEW	3
Selecting a 62	3
Features of the Model	3
Technical Specifications	4
Pricing and Ordering	4
Questions and Answers	4
Owner Experience Review	5
Pros and Cons	6
Comparison with Other Models	6
SPECIFICATIONS	8
GALLERY	9
CONTACTS	14

OVERVIEW

Crafted by PERSHING, the 62 is a modern motor yacht from the wider category of motor yachts, built on a planing hull constructed of fiberglass and plastic. Offered through Shestakov Yacht Sales with broker Andrey Shestakov, this 60-foot platform blends useful proportions with practical tankage and payload for adaptable cruising.

Selecting a 62

When you select the PERSHING 62 you're choosing a footprint that fits many marinas while still delivering meaningful interior volume and stowage. Measuring 60 ft (18.48 m) overall with a 16 ft (5 m) beam and a maximum draft of 3.609 ft (1.1 m), it is well suited to a range of berthing options and coastal itineraries. Twin MAN powerplants offer steady propulsion, and tanks holding 462.3 gallons of fuel and 237.76 gallons of fresh water reduce the need for frequent port calls. For guidance on matching this motor yacht to your cruising plans and slips, contact Andrey Shestakov at Shestakov Yacht Sales.

Features of the Model

- Classification: a motor yacht within the segment of motor yachts.
- Hull and deck: planing hull fashioned from fiberglass and plastic with a fiberglass deck to ensure durability and straightforward upkeep.
- Propulsion: fitted with twin MAN units for consistent, well-balanced performance and handling.
- Dimensions tuned for access: LOA 60 ft (18.48 m), beam 16 ft (5 m), draft 3.609 ft (1.1 m).
- Practical capacities: 462.3 gal fuel and 237.76 gal fresh water to increase time between refueling and reprovisioning.

Technical Specifications

- Builder: PERSHING
- Model: 62
- Category: motor yacht within motor yachts
- Hull configuration: Planing
- Hull material: fiberglass and plastic
- Deck material: Fiberglass
- Length overall (LOA): 60 ft (18.48 m)
- Beam: 16 ft (5 m)
- Maximum draft: 3.609 ft (1.1 m)
- Engines: 2 × MAN
- Fuel capacity: 462.3 gal
- Water capacity: 237.76 gal

Pricing and Ordering

To obtain current pricing, determine availability, or discuss lead times for a PERSHING 62, get in touch with Andrey Shestakov and the Shestakov Yacht Sales team. We will evaluate specifications, optional equipment, and similar listings to align with your schedule and financial plan, and we'll coordinate surveys, sea trials, and closing paperwork on your behalf.

Questions and Answers

Q: What type of yacht is the PERSHING 62? A: It's a motor yacht in the larger motor yachts category, constructed on a planing hull and using a fiberglass and plastic hull form.

Q: What are the key dimensions of the 62? A: The **length** measures 60 ft (18.48

m), the **beam** is 16 ft (5 m), and the **maximum draft** is 3.609 ft (1.1 m).

Q: What powers the yacht? A: The PERSHING 62 is fitted with **twin MAN engines** , delivering a balanced **engines** arrangement and reliable thrust.

Q: What are the onboard capacities? A: The **fuel capacity** is 462.3 gallons and the **fresh water capacity** is 237.76 gallons, allowing for more efficient itinerary planning.

Q: How can I purchase through Shestakov Yacht Sales? A: Contact **Andrey Shestakov** at **Shestakov Yacht Sales** to review **pricing** , **availability** , and the next steps for inspections, sea trials, and paperwork on a PERSHING 62.

Owner Experience Review

Owners are drawn to the 62 from PERSHING for spirited family cruising and weekend getaways, most commonly specified in two- or three-cabin plans that include a full-beam midship master. The model also serves well for social outings—late-afternoon cocktail runs showcase the airy, 360-degree salon with sunroof and the open cockpit-to-galley flow—and its presence in Mediterranean listings underscores its appeal as a day-charter platform, often offered in three-cabin, three-head arrangements. Several owners report installing upgraded galley appliances or additional cold storage to lengthen their time offshore; overall the yacht is comfortable for short stays, though interior volume does not rival larger motoryacht alternatives.

On the water, owners report a sporty, responsive character when equipped with Arneson surface drives, along with brisk acceleration and a typical cruise of 36–38 knots at about 80% engine load. Peak speeds are frequently cited in the 43–47-knot band depending on propulsion and drive choices, with some reports noting around 42 knots for cruise and up to 48 knots as a top speed in certain setups. Those performance benefits come with compromises: the hull

is sensitive to trim and load distribution, and surface drives require ongoing maintenance—replacement boots, seals, prop work—and generally incur higher parts and labor costs versus conventional shaft drives. Documented refits indicate that older boats can need significant servicing, so prospective buyers should request a complete service history for the surface-drive system and engine room.

Pros and Cons

- High cruise in the 36–38-knot range and top speeds in the mid-40s, depending on specification.
- Sporty, responsive handling with Arneson surface drives when properly trimmed.
- Bright salon and full-beam midship master with flexible two- or three-cabin layouts.
- Surface drives demand periodic service and carry higher parts/labor costs than conventional shafts.
- Sensitive to trim and weight distribution, requiring an attentive helmsman at speed.
- Weekend-livable but does not offer the stand-up volumes of larger motoryachts.

Comparison with Other Models

Model	LOA	Beam	Draft	Speed (Cruising/...	Gross...
62	60' 0" (18.48 m)	16' 0" (5 m)	3' 7" (1.10 m)		
52	52' 0" (15.85 m)	15' 0" (4.70 m)	12' 7" (3.83 m)	35 kn / 46 kn	
50	52' 0" (16 m)	13' 0" (4.15 m)	3' 11" (1.20 m) – 4' 5" (1.35 m)	26 kn / 33 kn	28
9X	92' 0" (28.04 m)	20' 0" (6.22 m)	17' 9" (5.42 m)	35 kn / 42 kn	

64'	65' 0" (20 m)	16' 0" (5 m)	4' 11" (1.50 m)	40 kn / 46 kn	
7X	70' 0" (21.34 m)	17' 0" (5.36 m)	16' 5" (5 m)	42 kn / 50 kn	
8X	80' 0" (24.38 m)	19' 0" (5.87 m)	15' 0" (4.58 m)	38 kn / 48 kn	
PERSHING 92	92' 0" (28.04 m)	20' 0" (6.22 m)	17' 9" (5.42 m)	38 kn / 43 kn	105
54 HT	58' 0" (17.73 m)	15' 0" (4.65 m)	4' 8" (1.42 m)	37 kn / 48 kn	
PERSHING 70	70' 0" (21.34 m)	16' 0" (5.03 m)	14' 9" (4.50 m) – 16' 5" (5 m)	32 kn / 47 kn	48

SPECIFICATIONS

LOA:

60' 0" (18.48 m)

Max Draft:

3' 7" (1.10 m)

Water Capacity:

237.76 Gallons

Hull Material:

Fiberglass and Plastic Yachts

Hull Configuration:

Planing

Engines:

2

Beam:

16' 0" (5 m)

Fuel Capacity:

462.3 Gallons

Deck Material:

Fiberglass

Manufacturer:

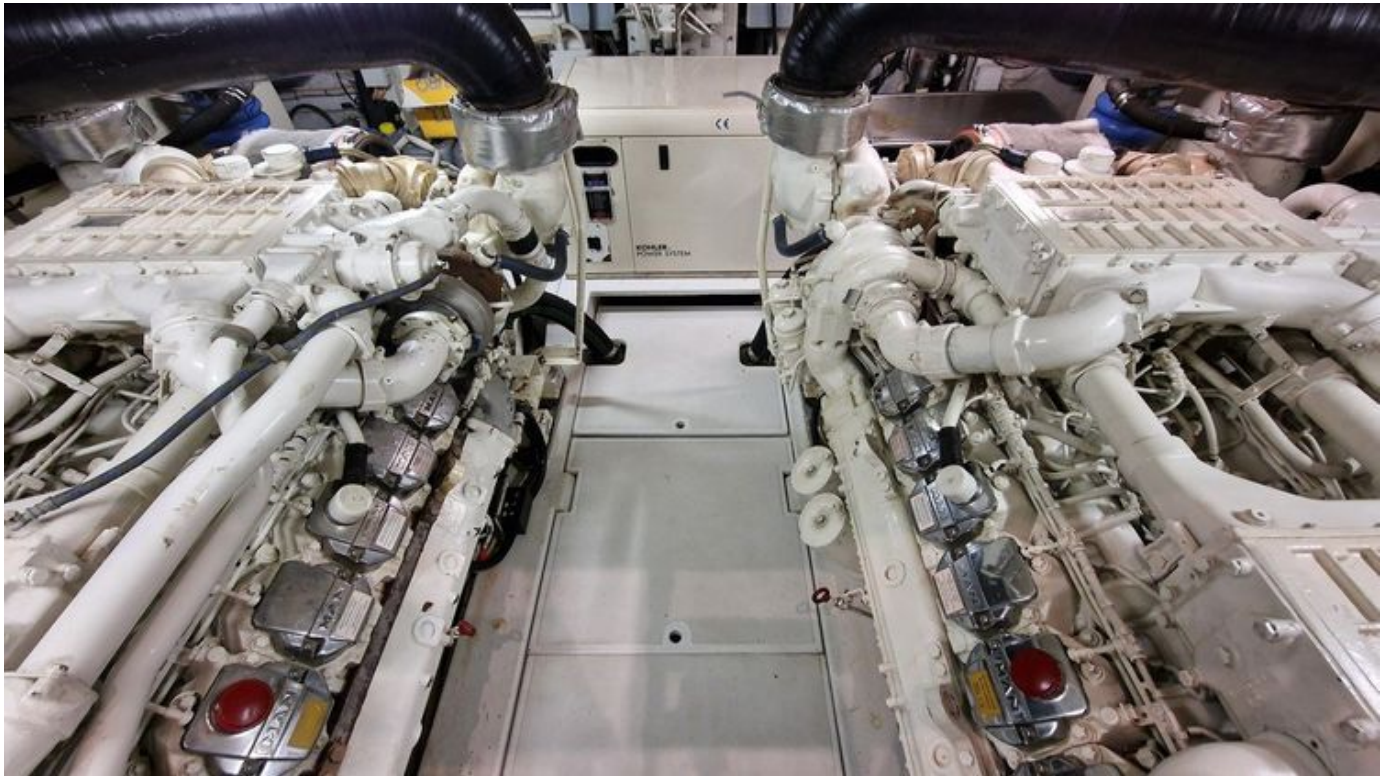
MAN

GALLERY











CONTACTS

Shestakov Yacht Sales is a brokerage company specializing in the sale and service of yachts worldwide. The company offers services for buying and selling both new and used motor yachts, sailing vessels, and luxury superyachts. They also provide yacht registration, insurance, technical maintenance, crew selection, and charter organization services across the U.S., Canada, Latin America, the Caribbean, and the Bahamas.

The founder and lead broker of the company is Andrey Shestakov, a licensed and certified expert with extensive experience in marine engineering and shipbuilding.

The company has an extensive network of partnerships with major yacht manufacturers worldwide and provides services in multiple languages, including Russian, Ukrainian, Spanish, and English. The office is in Dania Beach, Florida, USA.

For more information and to view available yachts, you can visit the company's official website: <https://shestakovyachtsales.com>

Contact details

Phone: +1(954)274-4435

Email: andrey@shestakovyachtsales.com

Address



1380 Weeping Willow Way, Hollywood,
Florida 33019