



SHESTAKOV

Yacht Sales

72 PERSHING – PERSHING



Builder:

PERSHING

Model:

72 PERSHING

LOA:

72' 0" (21.95 m)

Min Draft:

15' 7" (4.75 m)

Beam:

18' 0" (5.52 m)

Max Draft:

15' 7" (4.75 m)

Cruise Speed:

40 kn / 46.03 mph

Max Speed:

45 kn / 51.78 mph

Water Capacity:

262 Gallons

Fuel Capacity:

1188.8 Gallons

Total Heads:

3

Crew Cabin:

1

If you would like to buy a yacht **72 PERSHING – PERSHING** or would like help, please call +1(954)274-4435 or visit shestakovyachtsales.com

TABLE OF CONTENTS

OVERVIEW 3

- Selecting a 72 PERSHING 3
- Features of the Model 3
- Technical Specifications 4
- Pricing and Ordering 4
- Questions and Answers 4
- Owner Experience Review 5
- Pros and Cons 6
- Comparison with Other Models 6

SPECIFICATIONS 8

GALLERY 9

CONTACTS 14

OVERVIEW

The 72 PERSHING from PERSHING is a motor yacht engineered for enthusiasts who demand excitement without sacrificing onboard refinement. Built on a Deep Vee running surface with a fiberglass hull, twin MTU inboard diesels push this model into the 40–45-knot performance band, marrying high speed, Italian styling, and comfortable accommodations. Offered by Shestakov Yacht Sales, brokered by Andrey Shestakov.

Selecting a 72 PERSHING

Opt for the 72 PERSHING if you need a streamlined, high-speed platform suited to coastal sprints and short getaways, yet roomy enough for family or friends. Its twin MTU inboards provide the required performance punch, while sleeping space for six and three heads make extended stays aboard practical. The Deep Vee hull is the feature that delivers confident seakeeping when speed and sea-keeping matter most.

Features of the Model

- Performance envelope: cruise at 40 kn (46.03 mph), top speed 45 kn (51.78 mph)
- Twin MTU inboard diesel engines for reliable, high-speed running
- Deep Vee hull geometry for stability at pace
- Hull in fiberglass; deck in Fiberglass
- Layout highlights: accommodations for 6, 3 heads, plus 1 crew cabin (1 berth)
- Hull and interior by PERSHING for a cohesive design language
- Substantial tankage: 1,188.8 gal fuel and 262 gal water

Technical Specifications

- Length overall (LOA): 72 ft (21.95 m)
- Beam: 18 ft (5.52 m)
- Draft (min/max): 15.584 ft (4.75 m)
- Cruise speed: 40 kn (46.03 mph)
- Max speed: 45 kn (51.78 mph)
- Engines: 2 x MTU, Inboard, Diesel
- Hull configuration: Deep Vee
- Hull material: fiberglass
- Deck material: Fiberglass
- Hull designer: PERSHING
- Interior designer: PERSHING
- Accommodations: 6
- Heads: 3
- Crew cabins/beds: 1/1
- Water capacity: 262 gal
- Fuel capacity: 1,188.8 gal

Pricing and Ordering

For up-to-date pricing, current availability, and to schedule a private inspection or sea trial of the 72 PERSHING by PERSHING, please contact Andrey Shestakov at Shestakov Yacht Sales. Our brokerage team will support you through selection, viewing, and acquisition to ensure a smooth purchasing experience.

Questions and Answers

Q: What are the cruising and top speeds of the 72 PERSHING? A: The **cruise speed** is 40 knots (46.03 mph) and the **top speed** is 45 knots (51.78 mph).

Q: How many people can the yacht accommodate? A: There are **accommodations** for 6, with **3 heads** , plus a **crew cabin** with 1 berth.

Q: What kind of yacht is it and what is the hull made of? A: It's a motor yacht in the high-performance segment with a fiberglass hull and a **Deep Vee** configuration.

Q: Who designed the hull and interior? A: Both were designed by **PERSHING** , ensuring a unified performance and design ethos.

Q: What powers the yacht? A: Two **MTU inboard diesel** engines provide the performance foundation for the 72 PERSHING.

Owner Experience Review

Owners and professional reviewers typically describe the 72 PERSHING by PERSHING as a genuine high-speed sport cruiser. Planing cruises are commonly reported in the 35–42+ knot window, with many broker specifications citing around 40–42 knots and maximums approaching 45. Handling at speed receives strong commendation—one owner called it “out of this world”—though a number of testers mention the boat “takes a little getting used to.”

Aboard, owners and former crew often describe 3–4 cabin layouts, frequently including a midships owner's stateroom with VIP and guest cabins plus a crew area. Firsthand accounts sometimes list four bedrooms and two bathrooms in addition to a comfortable salon and galley, which aligns with listings that position the interior for family cruising and hosting guests. The retractable glass bulkhead between cockpit and salon is repeatedly praised for creating one expansive social zone, ideal for weekend entertaining.

From an operational standpoint, the surface-drive installation is praised for its speed efficiency and agility, but reviewers note a tradeoff in lower low-speed

thrust and more challenging close-quarters handling—part of the learning curve for new owners. Maintenance expectations are well documented: surface drives require attentive corrosion and fouling control and regular anode replacement and specialist servicing (Arneson/SeaRex systems are specifically mentioned in listings and forums). MTU 2000 series powerplants also carry elevated scheduled service and overhaul costs, so a meticulous review of service history is essential. Several owners add that access for servicing can be tight in some areas, so confirming mechanical access and technical fit out during survey is advisable.

Pros and Cons

- Exhilarating performance with typical 40–42 knot cruises and top speeds around 45 knots.
- Salon-cockpit glass bulkhead creates a large, social space ideal for weekends and entertaining.
- Versatile 3–4 cabin layouts with a crew area suit family cruising and guest hosting.
- Surface drives can be tricky in close quarters with reduced low speed thrust.
- Ownership costs trend higher due to MTU 2000 series scheduled services and specialist surface drive maintenance.
- Service access can be tight in areas and should be evaluated carefully during survey.

Comparison with Other Models

| Model | LOA | Beam | Draft | Speed (Cruising/... | Gross... |
|-------------|------------------|-----------------|-----------------|---------------------|----------|
| 72 PERSHING | 72' 0" (21.95 m) | 18' 0" (5.52 m) | 15' 7" (4.75 m) | 40 kn / 45 kn | |
| 52 | 52' 0" (15.85 m) | 15' 0" (4.70 m) | 12' 7" (3.83 m) | 35 kn / 46 kn | |

| | | | | | |
|-------------|------------------|-----------------|----------------------------------|---------------|-----|
| 50 | 52' 0" (16 m) | 13' 0" (4.15 m) | 3' 11" (1.20 m) – 4' 5" (1.35 m) | 26 kn / 33 kn | 28 |
| 9X | 92' 0" (28.04 m) | 20' 0" (6.22 m) | 17' 9" (5.42 m) | 35 kn / 42 kn | |
| 64' | 65' 0" (20 m) | 16' 0" (5 m) | 4' 11" (1.50 m) | 40 kn / 46 kn | |
| 7X | 70' 0" (21.34 m) | 17' 0" (5.36 m) | 16' 5" (5 m) | 42 kn / 50 kn | |
| 8X | 80' 0" (24.38 m) | 19' 0" (5.87 m) | 15' 0" (4.58 m) | 38 kn / 48 kn | |
| PERSHING 92 | 92' 0" (28.04 m) | 20' 0" (6.22 m) | 17' 9" (5.42 m) | 38 kn / 43 kn | 105 |
| 54 HT | 58' 0" (17.73 m) | 15' 0" (4.65 m) | 4' 8" (1.42 m) | 37 kn / 48 kn | |
| PERSHING 70 | 70' 0" (21.34 m) | 16' 0" (5.03 m) | 14' 9" (4.50 m) – 16' 5" (5 m) | 32 kn / 47 kn | 48 |

SPECIFICATIONS

LOA:

72' 0" (21.95 m)

Beam:

18' 0" (5.52 m)

Cruise Speed:

40 kn / 46.03 mph

Water Capacity:

262 Gallons

Total Heads:

3

Crew Berths:

1

Hull Material:

Fiberglass and Plastic Yachts

Hull Configuration:

Deep Vee

Interior Designer:

PERSHING

Engines:

2

Engine Type:

Inboard

Min Draft:

15' 7" (4.75 m)

Max Draft:

15' 7" (4.75 m)

Max Speed:

45 kn / 51.78 mph

Fuel Capacity:

1188.8 Gallons

Crew Cabin:

1

Deck Material:

Fiberglass

Hull Designer:

PERSHING

Manufacturer:

MTU

Fuel Type:

Diesel

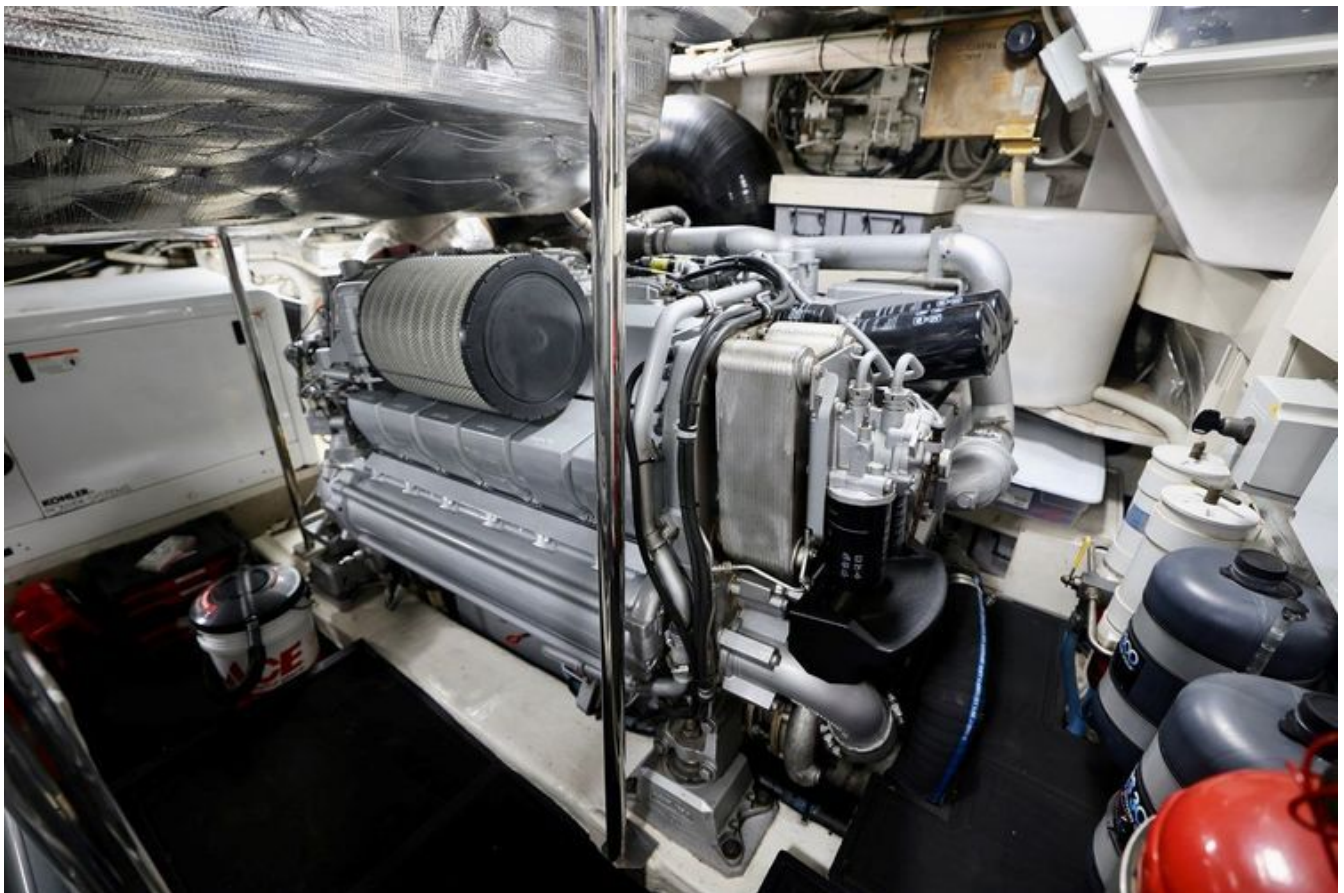
GALLERY











CONTACTS

Shestakov Yacht Sales is a brokerage company specializing in the sale and service of yachts worldwide. The company offers services for buying and selling both new and used motor yachts, sailing vessels, and luxury superyachts. They also provide yacht registration, insurance, technical maintenance, crew selection, and charter organization services across the U.S., Canada, Latin America, the Caribbean, and the Bahamas.

The founder and lead broker of the company is Andrey Shestakov, a licensed and certified expert with extensive experience in marine engineering and shipbuilding.

The company has an extensive network of partnerships with major yacht manufacturers worldwide and provides services in multiple languages, including Russian, Ukrainian, Spanish, and English. The office is in Dania Beach, Florida, USA.

For more information and to view available yachts, you can visit the company's official website: <https://shestakovyachtsales.com>

Contact details

Phone: +1(954)274-4435

Email: andrey@shestakovyachtsales.com

Address



1380 Weeping Willow Way, Hollywood,
Florida 33019