



SHESTAKOV

Yacht Sales

GTX 80 – PERSHING



Builder:

PERSHING

Model:

GTX 80

LOA:

80' 0" (24.38 m)

Beam:

19' 0" (5.79 m)

Max Draft:

19' 11" (6.08 m)

Cruise Speed:

28 kn / 32.22 mph

Max Speed:

34 kn / 39.13 mph

Water Capacity:

343 Gallons

Fuel Capacity:

1374 Gallons

Total Heads:

4

Crew Berths:

1

Hull Material:

Fiberglass and Plastic Yachts

If you would like to buy a yacht **GTX 80 – PERSHING** or would like help, please call +1(954)274-4435 or visit shestakovyachtsales.com

TABLE OF CONTENTS

OVERVIEW 3

- Selecting a GTX 80 3
- Features of the Model 3
- Technical Specifications 4
- Pricing and Ordering 4
- Questions and Answers 5
- Owner Experience Review 5
- Pros and Cons 6
- Comparison with Other Models 7

SPECIFICATIONS 8

GALLERY 9

CONTACTS 14

OVERVIEW

Purpose-built for owners who prize speed and exacting performance, the GTX 80 from PERSHING occupies a confident place in the motor yachts category. This motor yacht pairs impressive performance numbers with a fiberglass construction hull and Deep Vee underwater profile. Shestakov Yacht Sales, with broker Andrey Shestakov at the helm, can assist with selection and acquisition.

Selecting a GTX 80

Opting for the GTX 80 signals a focus on outright speed, handling finesse, and contemporary composite construction. The configuration—triple inboard Volvo diesels, Deep Vee hull form, and a generous 19 ft beam—delivers an appealing mix of performance and onboard volume for buyers seeking a modern motor yacht inside the broader motor yachts segment. Contact Andrey Shestakov at Shestakov Yacht Sales to match powertrain, layout, and cruising intentions.

Features of the Model

- Triple-engine propulsion: three inboard Volvo diesel units provide strong, confident thrust
- Performance envelope: typical cruise at 28 kn (32.22 mph) with a quoted top speed of 34 kn (39.13 mph)
- Hull and deck: Deep Vee hull geometry paired with a fiberglass construction hull and fiberglass deck
- Dimensions that matter: 80 ft LOA and a 19 ft beam deliver interior volume and seakeeping stability
- Onboard utilities: 343 gal fresh water capacity and 1,374 gal fuel capacity
- Accommodations: four heads and space for one crew berth

- Layout flexibility: interior and exterior arrangements designed for both spirited passages and entertaining

Technical Specifications

- Builder: PERSHING
- Model: GTX 80
- Category: motor yachts; Subcategory: motor yacht; Hull category: fiberglass
- Hull configuration: Deep Vee
- Hull material: fiberglass
- Deck material: Fiberglass
- LOA: 80 ft (24.38 m)
- Beam: 19 ft (5.79 m)
- Max draft: 19.958 ft (6.0833 m)
- Engines: 3 x Volvo, Inboard, Diesel
- Speed (cruise): 28 kn (32.22 mph)
- Speed (max): 34 kn (39.13 mph)
- Heads: 4
- Crew beds: 1
- Water capacity: 343 gal
- Fuel capacity: 1,374 gal

Pricing and Ordering

For up-to-date pricing, customization options, and estimated delivery for the GTX 80 by PERSHING, reach out to Shestakov Yacht Sales. Broker Andrey Shestakov will support specification review, paperwork, and the entire transaction process from offer through closing.

Questions and Answers

Q: What type of yacht is the GTX 80? A: It is classified among motor yachts and more specifically defined as a motor yacht, constructed with a fiberglass construction hull.

Q: What are the key dimensions of the GTX 80? A: The **LOA** measures 80 ft (24.38 m), the **beam** spans 19 ft (5.79 m), and the **max draft** is listed as 19.958 ft (6.0833 m) in a Deep Vee layout.

Q: How fast can it go and at what cruising pace? A: Nominal **cruise speed** is 28 kn (32.22 mph) while the **top speed** is noted as 34 kn (39.13 mph).

Q: What powers the yacht and what fuel does it use? A: Propulsion is supplied by **3 Volvo inboard** engines that run on **diesel** .

Q: Who can help me order and survey a motor yacht like this? A: Andrey Shestakov and the Shestakov Yacht Sales team can manage **specification** , **offers** , and the **purchase logistics** for the GTX 80 by PERSHING.

Owner Experience Review

Owners and professional operators who evaluate the GTX 80 from PERSHING generally find it fulfils the sport yacht brief for rapid coastal and offshore passages. Sea trials reference a deep V running surface combined with IPS/azimuth drives that yield composed, accurate handling and a surprisingly compliant ride in moderate seas.

Reported cruise numbers commonly fall in the 28–38 knot band, and published top speeds vary from about 34 knots up to 48+ knots depending on the specific fit-out and conditions. Features like joystick controls for docking and dynamic positioning are noted for easing close quarters maneuvers. As an early series model, most feedback is derived from trials and brokered

examples rather than extended owner histories.

Onboard impressions emphasize the seamless indoor–outdoor connection afforded by a large sliding glass wall that links the saloon and U shaped galley to the aft bar and cockpit, along with a roomy sportbridge/sundeck suited to entertaining. Practical design elements called out include dining accommodation for eight, a full beam master, dedicated VIP/guest cabins, and an independent crew section sized for multi day operations. Brokers also market certain hulls as turnkey for small group charter or owner hosted events, while advising buyers to plan for IPS maintenance schedules/costs and the higher fuel consumption associated with sustained high speeds.

Pros and Cons

- Stable, precise handling at speed attributed to the deep V hull and IPS/azimuth pod installations, with a comfortable ride in moderate sea states.
- Seamless indoor–outdoor arrangement featuring a large sliding glass wall that connects the saloon/galley to the cockpit and a large sportbridge/sundeck that supports entertaining.
- Functional cruising layout including a U shaped galley, dining for eight, a full beam master suite, guest cabins, and a separate crew area for extended trips.
- Elevated fuel consumption when operated at high speed, as noted in sea trial reports.
- IPS installations (reported as 3× Volvo Penta D13 IPS1350 or similar) demand manufacturer specific service intervals and attendant costs.
- An early production model, so there are fewer long term owner reports relative to older, more established designs.

Comparison with Other Models

Model	LOA	Beam	Draft	Speed (Cruising/...	Gross...
GTX 80	80' 0" (24.38 m)	19' 0" (5.79 m)	19' 11" (6.08 m)	28 kn / 34 kn	
52	52' 0" (15.85 m)	15' 0" (4.70 m)	12' 7" (3.83 m)	35 kn / 46 kn	
50	52' 0" (16 m)	13' 0" (4.15 m)	3' 11" (1.20 m) – 4' 5" (1.35 m)	26 kn / 33 kn	28
9X	92' 0" (28.04 m)	20' 0" (6.22 m)	17' 9" (5.42 m)	35 kn / 42 kn	
64'	65' 0" (20 m)	16' 0" (5 m)	4' 11" (1.50 m)	40 kn / 46 kn	
7X	70' 0" (21.34 m)	17' 0" (5.36 m)	16' 5" (5 m)	42 kn / 50 kn	
8X	80' 0" (24.38 m)	19' 0" (5.87 m)	15' 0" (4.58 m)	38 kn / 48 kn	
PERSHING 92	92' 0" (28.04 m)	20' 0" (6.22 m)	17' 9" (5.42 m)	38 kn / 43 kn	105
54 HT	58' 0" (17.73 m)	15' 0" (4.65 m)	4' 8" (1.42 m)	37 kn / 48 kn	
PERSHING 70	70' 0" (21.34 m)	16' 0" (5.03 m)	14' 9" (4.50 m) – 16' 5" (5 m)	32 kn / 47 kn	48

SPECIFICATIONS

LOA:

80' 0" (24.38 m)

Max Draft:

19' 11" (6.08 m)

Cruise Speed:

28 kn / 32.22 mph

Water Capacity:

343 Gallons

Total Heads:

4

Hull Material:

Fiberglass and Plastic Yachts

Hull Configuration:

Deep Vee

Engines:

3

Engine Type:

Inboard

Beam:

19' 0" (5.79 m)

Max Speed:

34 kn / 39.13 mph

Fuel Capacity:

1374 Gallons

Crew Berths:

1

Deck Material:

Fiberglass

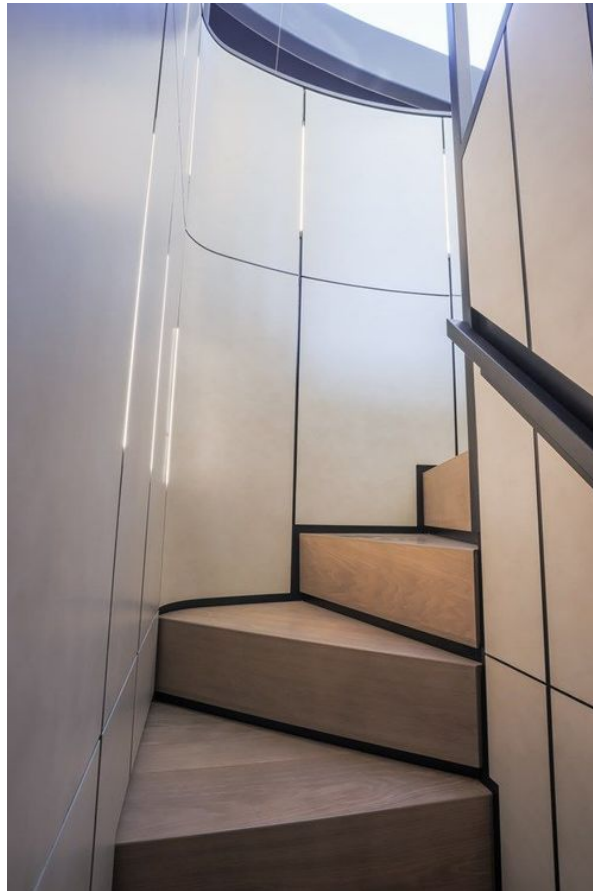
Manufacturer:

Volvo

Fuel Type:

Diesel

GALLERY











CONTACTS

Shestakov Yacht Sales is a brokerage company specializing in the sale and service of yachts worldwide. The company offers services for buying and selling both new and used motor yachts, sailing vessels, and luxury superyachts. They also provide yacht registration, insurance, technical maintenance, crew selection, and charter organization services across the U.S., Canada, Latin America, the Caribbean, and the Bahamas.

The founder and lead broker of the company is Andrey Shestakov, a licensed and certified expert with extensive experience in marine engineering and shipbuilding.

The company has an extensive network of partnerships with major yacht manufacturers worldwide and provides services in multiple languages, including Russian, Ukrainian, Spanish, and English. The office is in Dania Beach, Florida, USA.

For more information and to view available yachts, you can visit the company's official website: <https://shestakovyachtsales.com>

Contact details

Phone: +1(954)274-4435

Email: andrey@shestakovyachtsales.com

Address



1380 Weeping Willow Way, Hollywood,
Florida 33019