



SHESTAKOV

Yacht Sales

202 ISLANDER – PIONEER



Builder:

PIONEER

Model:

202 iSLANDER

LOA:

19' 0" (6.02 m)

Beam:

8' 0" (2.49 m)

Water Capacity:

15 Gallons

Fuel Capacity:

61 Gallons

Hull Material:

Fiberglass and Plastic Yachts

Deck Material:

Fiberglass

Engines:

2

Manufacturer:

Suzuki

If you would like to buy a yacht **202 ISLANDER – PIONEER** or would like help, please call +1(954)274-4435 or visit shestakovyachtsales.com

TABLE OF CONTENTS

OVERVIEW 3

- Selecting a 202 iSLANDER 3
- Features of the Model 3
- Technical Specifications 4
- Pricing and Ordering 4
- Questions and Answers 4
- Owner Experience Review 5
- Pros and Cons 6
- Comparison with Other Models 6

SPECIFICATIONS 7

GALLERY 8

CONTACTS 13

OVERVIEW

The 202 iSLANDER from PIONEER is a compact day boat designed to serve both anglers and families. This nimble motor yacht features a practical center console layout and a resilient fiberglass and plastic hull, offering a straightforward mix of durability and usability. For specific availability and personalized advice, contact Andrey Shestakov and his team at Shestakov Yacht Sales.

Selecting a 202 iSLANDER

Deciding on the 202 iSLANDER hinges on its compact, user-friendly dimensions and uncomplicated operation. At 19 ft (6.02 m) LOA with an 8 ft (2.49 m) beam, it is trailerable and easy to handle. The open deck that surrounds the center console accommodates active days on the water, and the twin Suzuki engines provide both redundancy and a smooth ride for coastal passages and lake excursions. Shestakov Yacht Sales, led by Andrey Shestakov, can guide you through evaluating suitability, selecting fit-outs, and the acquisition process.

Features of the Model

- Purpose-built center console arrangement that keeps the deck free for movement
- Twin-engine configuration: 2 x Suzuki for balanced thrust and dependable operation
- Sturdy construction using a fiberglass and plastic hull combined with fiberglass deck surfaces
- Thoughtful fuel and fresh water capacities sized for full-day outings
- Compact footprint: 19 ft LOA and 8 ft beam for straightforward storage and trailering

Technical Specifications

- Model: 202 iSLANDER
- Builder: PIONEER
- Type: motor yacht
- Layout: center console
- Hull category: fiberglass and plastic
- LOA: 19 ft (6.02 m)
- Beam: 8 ft (2.49 m)
- Engines: 2 x Suzuki
- Fuel capacity: 61 gal
- Fresh water capacity: 15 gal
- Deck material: Fiberglass

Pricing and Ordering

Current pricing, production slots, and estimated delivery schedules for the 202 iSLANDER are available upon request. Contact Andrey Shestakov at Shestakov Yacht Sales to go over specs, optional equipment, and to set up an inspection or sea trial.

Questions and Answers

Q: What type of boat is the 202 iSLANDER? A: It is a motor yacht configured with a center console layout and built on a fiberglass and plastic hull.

Q: How many engines does it have, and what brand are they? A: The model is fitted with **2 engines** from **Suzuki**, delivering balanced power and redundancy.

Q: What are the key dimensions? A: The **LOA** measures 19 ft (6.02 m) and the

beam is 8 ft (2.49 m), offering stable performance and convenient storage options.

Q: What are the fuel and water capacities? A: The **fuel capacity** is 61 gal and the **fresh water capacity** is 15 gal, adequate for a full day on the water.

Q: Who can help me order or inspect the boat? A: Contact **Andrey Shestakov** and the team at **Shestakov Yacht Sales** to discuss availability, configuration choices, and next steps for the 202 iSLANDER by PIONEER.

Owner Experience Review

Owners report the 202 iSLANDER from PIONEER behaves like a confident 20-foot center-console in a range of conditions. Reviewers frequently mention it delivers a relatively dry, steady ride in chop compared with other boats of similar size, and many operators use it for nearshore work and extended day runs. One owner captured the sentiment succinctly: "rides better, looks better, more capable, dryer" against comparable craft.

Typical use tilts toward inshore and nearshore saltwater fishing as well as family day cruising. Convertible seating, built-in cooler and storage, and bow cushions that form a sociable "conversation pit" make it easy to switch from fishing mode to leisure at anchor. Owners also commonly trailer the boat for bay and creek trips, valuing its shallow-water capabilities and easy coastal hops. There is no enclosed cabin, so while it excels for day use, it is not intended for long-term liveaboard comfort.

Maintenance aligns with standard outboard ownership patterns. Many hulls are also fitted with Yamaha outboards such as the F175, and the outboard installation generally allows straightforward access for routine servicing and inspection. Across enthusiast forums and listings, there is no recurring model-specific fault; most reported concerns are the usual outboard,

lower-unit, and trailer maintenance items.

Pros and Cons

- Stable, comparatively dry ride in choppy water versus many similar center consoles.
- Flexible, family-oriented layout featuring an integrated cooler/storage and a bow "conversation pit."
- No prevalent model-specific defects reported; easy outboard access simplifies routine servicing.
- Lacks an enclosed cabin, making it primarily a day-boat rather than suitable for extended liveaboard use.
- As a 20-foot center-console, nearshore passages and bar crossings require careful weather planning and seamanship.
- Ongoing ownership responsibilities include standard outboard, lower-unit, and trailer maintenance.

Comparison with Other Models

Model	LOA	Beam	Draft	Speed (Cruising/...	Gross...
220 Bay Sport	22' 0" (6.71 m)	8' 0" (2.59 m)	3' 7" (1.08 m)		
202 iSLANDER	19' 0" (6.02 m)	8' 0" (2.49 m)			
202 Sportfish	20' 0" (6.10 m)	8' 0" (2.49 m)	3' 7" (1.08 m) – 9' 0" (2.75 m)	30 kn / 39 kn	

SPECIFICATIONS

LOA:

19' 0" (6.02 m)

Water Capacity:

15 Gallons

Hull Material:

Fiberglass and Plastic Yachts

Engines:

2

Beam:

8' 0" (2.49 m)

Fuel Capacity:

61 Gallons

Deck Material:

Fiberglass

Manufacturer:

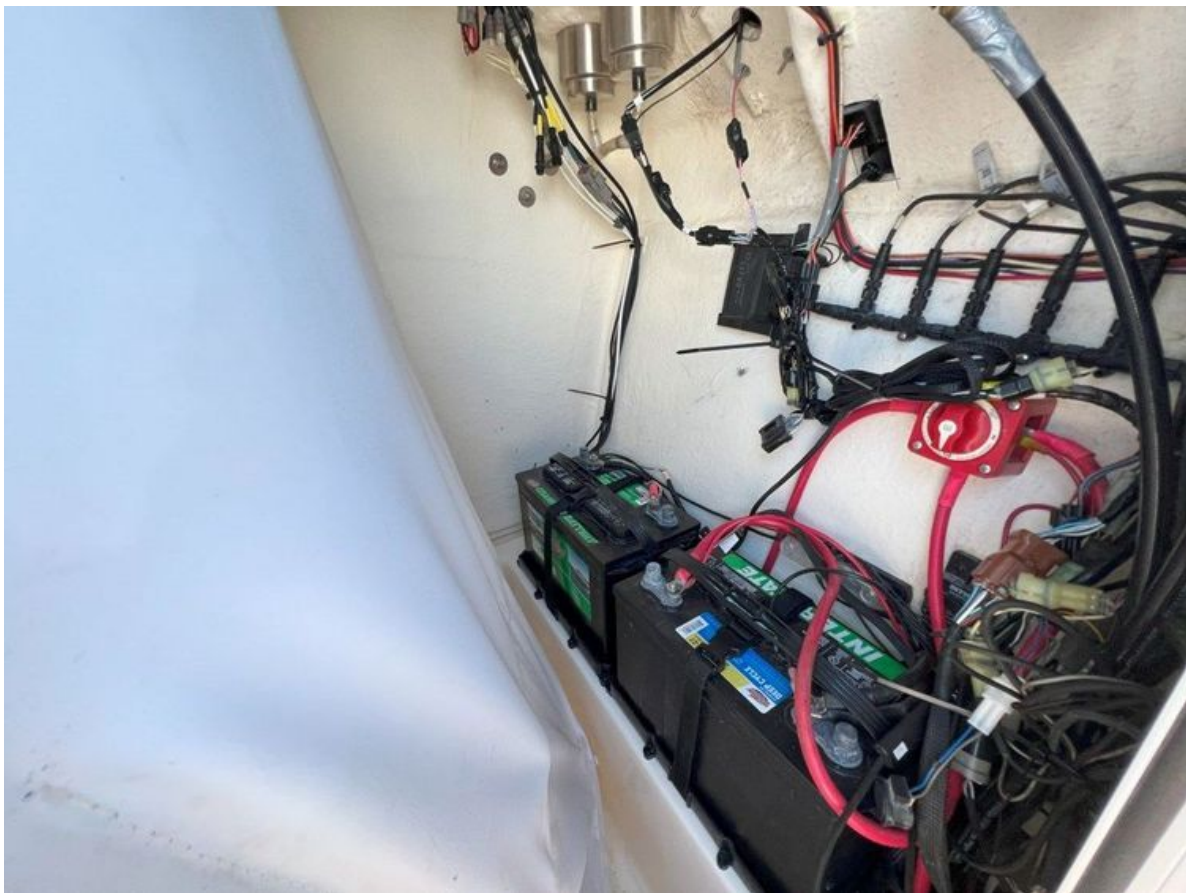
Suzuki

GALLERY











CONTACTS

Shestakov Yacht Sales is a brokerage company specializing in the sale and service of yachts worldwide. The company offers services for buying and selling both new and used motor yachts, sailing vessels, and luxury superyachts. They also provide yacht registration, insurance, technical maintenance, crew selection, and charter organization services across the U.S., Canada, Latin America, the Caribbean, and the Bahamas.

The founder and lead broker of the company is Andrey Shestakov, a licensed and certified expert with extensive experience in marine engineering and shipbuilding.

The company has an extensive network of partnerships with major yacht manufacturers worldwide and provides services in multiple languages, including Russian, Ukrainian, Spanish, and English. The office is in Dania Beach, Florida, USA.

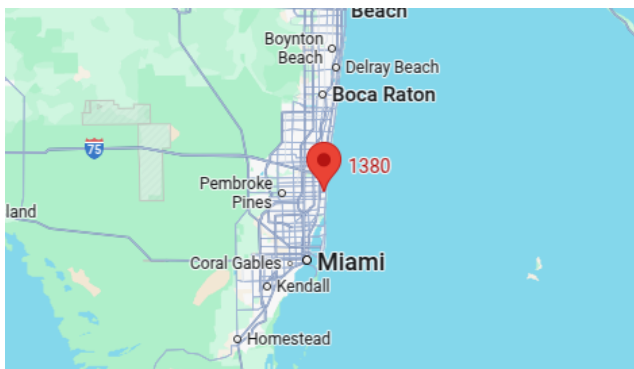
For more information and to view available yachts, you can visit the company's official website: <https://shestakovyachtsales.com>

Contact details

Phone: +1(954)274-4435

Email: andrey@shestakovyachtsales.com

Address



1380 Weeping Willow Way, Hollywood,
Florida 33019