



SHESTAKOV

Yacht Sales

100 MOTOR YACHT - PRESIDENT YACHTS



Builder:

PRESIDENT YACHTS

Model:

100 Motor Yacht

LOA:

100' 0" (30.48 m)

Min Draft:

20' 12" (6.40 m)

Beam:

23' 0" (7.10 m)

Max Draft:

20' 12" (6.40 m)

Cruise Speed:

12 kn / 13.81 mph

Max Speed:

16 kn / 18.41 mph

Gross Tonnage:

165 Pounds

Water Capacity:

800 Gallons

Fuel Capacity:

3000 Gallons

Total Heads:

3

If you would like to buy a yacht **100 MOTOR YACHT - PRESIDENT YACHTS** or would like help, please call +1(954)274-4435 or visit shestakovyachtsales.com

TABLE OF CONTENTS

OVERVIEW	3
Selecting a 100 Motor Yacht	3
Features of the Model	3
Technical Specifications	4
Pricing and Ordering	4
Questions and Answers	5
Owner Experience Review	5
Pros and Cons	6
Comparison with Other Models	7
SPECIFICATIONS	8
GALLERY	9
CONTACTS	14

OVERVIEW

The 100 Motor Yacht from PRESIDENT YACHTS is a flexible, sea-ready motor yacht built on a robust fiberglass foundation. With a 100 ft LOA, a 23 ft beam, twin Caterpillar inboard diesel powerplants, and generous fuel and water stores, it delivers a pragmatic blend of cruising capability and considered interior planning. For specification review, inspections, and purchase coordination, contact Andrey Shestakov and Shestakov Yacht Sales.

Selecting a [100 Motor Yacht](#)

If your priorities favor economical long-distance passages rather than top-end sprinting, this model's approximately 12 kn cruising speed and 16 kn top speed provide reliable progress. Its 165 GT volume, 3,000-gallon fuel capacity and 800-gallon water capacity enable extended itineraries without frequent refueling. The single-hulled fiberglass construction and fiberglass decks simplify upkeep while offering structural resilience. Accommodation-wise, the boat is configured with 3 heads and a single crew cabin, making it suitable for owner-operators or light-crew operations. Coordinate with Andrey Shestakov at Shestakov Yacht Sales to determine how this platform fits your cruising program.

Features of the Model

- Construction: fiberglass monohull with fiberglass decks, engineered for durability and straightforward maintenance.
- Propulsion: Twin Caterpillar inboard diesel engines chosen for dependable, easy-to-service operation.
- Design: Both hull and interior were conceived by President Yachts, emphasizing well-proportioned lines and practical living areas.

- Capacities: 3,000 gallons of fuel and 800 gallons of fresh water to support extended-range cruising.
- Layout highlights: Three heads and one crew cabin provide flexible service arrangements and guest support.

Technical Specifications

- Builder: PRESIDENT YACHTS
- Model: 100 Motor Yacht
- Type: motor yacht
- Hull material: fiberglass; Deck material: Fiberglass
- Hull configuration: Monohull
- LOA: 100 ft (30.48 m)
- Beam: 23 ft (7.1 m)
- Draft: 20.997 ft (6.4 m)
- Gross tonnage: 165 GT
- Engines: 2 x Caterpillar; Type: Inboard; Fuel: Diesel
- Speed: Cruise 12 kn (13.81 mph); Max 16 kn (18.41 mph)
- Designers: Hull — President Yachts; Interior — President Yachts
- Heads: 3; Crew cabins: 1
- Capacities: Fuel 3,000 gal; Water 800 gal

Pricing and Ordering

To obtain up-to-date pricing, availability, and to arrange next steps including sea trials, surveys, and shipping logistics, reach out to Andrey Shestakov at Shestakov Yacht Sales. Our brokerage will manage viewings, paperwork, and closing services to align with your schedule and purchasing requirements.

Questions and Answers

Q: What type of yacht is the 100 Motor Yacht? A: It's a motor yacht constructed on a fiberglass monohull platform. The **Type** , **hull material** , and **configuration** are selected to deliver toughness and predictable sea-keeping.

Q: What are the principal dimensions and draft? A: The vessel's dimensions are **100 ft (30.48 m) LOA** , **23 ft (7.1 m) beam** , with a **20.997 ft (6.4 m) draft** , delivering generous interior volume and notable stability for a yacht of this size.

Q: What performance can I expect underway? A: Operationally expect roughly a **12 kn cruising speed** (13.81 mph) and a **16 kn maximum** (18.41 mph) driven by **twin Caterpillar inboard diesel** engines, prioritizing **reliability** and fuel efficiency.

Q: Who handled the design and what are the build materials? A: Both the **hull and interior** were developed by **President Yachts** . The construction uses a fiberglass hull with **fiberglass decks** , chosen for **strength** and easier maintenance.

Q: How is the yacht arranged for accommodations and provisioning? A: Interior arrangements include **3 heads** and **1 crew cabin** , supported by **3,000 gallons of fuel** and **800 gallons of water** to facilitate extended cruising. For personalized advice, contact Andrey Shestakov at Shestakov Yacht Sales.

Owner Experience Review

Owners typically choose the 100 Motor Yacht from PRESIDENT YACHTS for family-oriented cruising and liveaboard lifestyles, often citing a four-stateroom, four-head arrangement and a raised-salon/tri-deck circulation that creates multiple entertaining decks. Broker information lists tankage at roughly 3,200

gallons of fuel and about 700 gallons of water, configuring the yacht for extended periods away from dockside services and true long-range passage capability. Brokers describe a steady, long-range character rather than a high-speed planing profile; reported figures tend to cluster near a 21-knot top end and about 16 knots when cruising, and fitted stabilizers — in some descriptions with zero-speed capability — improve comfort both underway and at anchor.

Preventive upkeep is commonly stressed by active owners, including examples prepared for extensive voyages such as a transit from Fort Lauderdale to Alaska. On the listed hull “Glen Ellen,” service records note main-engines rebuilt in 2019, new Northern Lights generators installed in 2021, and a complete five-year stabilizer overhaul including new seals completed in 2022. Owners experienced with Cat 3412E installations reference regular 1,000- and 3,000-hour maintenance cycles and occasional ECU or aftercooler attention, and brokerage listings frequently show periodic system refreshes — new refrigeration/freezer units, updated SAT/TV gear, and replacement bimini canvas — typical of a well-cruised 100-foot yacht.

Pros and Cons

- Four-stateroom, four-head arrangement with raised-salon/tri-deck circulation designed for family cruising and comfortable liveaboard use.
- Generous tankage (approximately 3,200 gal fuel and ~700 gal water) enabling long-range passages and extended time away from shore services.
- Stabilizers, including some zero-speed-capable systems in certain examples, increase comfort both underway and at anchor.
- Not designed for outright speed — it exhibits a heavier-displacement feel with reported speeds around a 21-knot maximum and 16-knot cruising pace.
- Ownership of Cat 3412E power requires adherence to scheduled 1,000- and 3,000-hour services and occasional attention to ECU/aftercooler components.

- Expect intermittent refits and maintenance projects (for example stabilizer service, galley/electronics upgrades, and canvas renewals) as documented in brokerage listings.

Comparison with Other Models

Model	LOA	Beam	Draft	Speed (Cruising/Max)	Gross Tonnage
Motor Yacht	107' 0" (32.61 m)	23' 0" (7.26 m)	20' 9" (6.33 m)	17 kn / 22 kn	
Sterling Tri-Deck	107' 0" (32.61 m)	23' 0" (7.26 m)	20' 9" (6.33 m)		
100 Motor Yacht	100' 0" (30.48 m)	23' 0" (7.10 m)	20' 12" (6.40 m)	12 kn / 16 kn	165

SPECIFICATIONS

LOA:

100' 0" (30.48 m)

Beam:

23' 0" (7.10 m)

Cruise Speed:

12 kn / 13.81 mph

Gross Tonnage:

165 Pounds

Fuel Capacity:

3000 Gallons

Total Heads:

3

Hull Material:

Fiberglass and Plastic Yachts

Hull Configuration:

Monohull

Interior Designer:

President Yachts

Engines:

2

Engine Type:

Inboard

Min Draft:

20' 12" (6.40 m)

Max Draft:

20' 12" (6.40 m)

Max Speed:

16 kn / 18.41 mph

Water Capacity:

800 Gallons

Crew Cabin:

1

Deck Material:

Fiberglass

Hull Designer:

President Yachts

Manufacturer:

Caterpillar

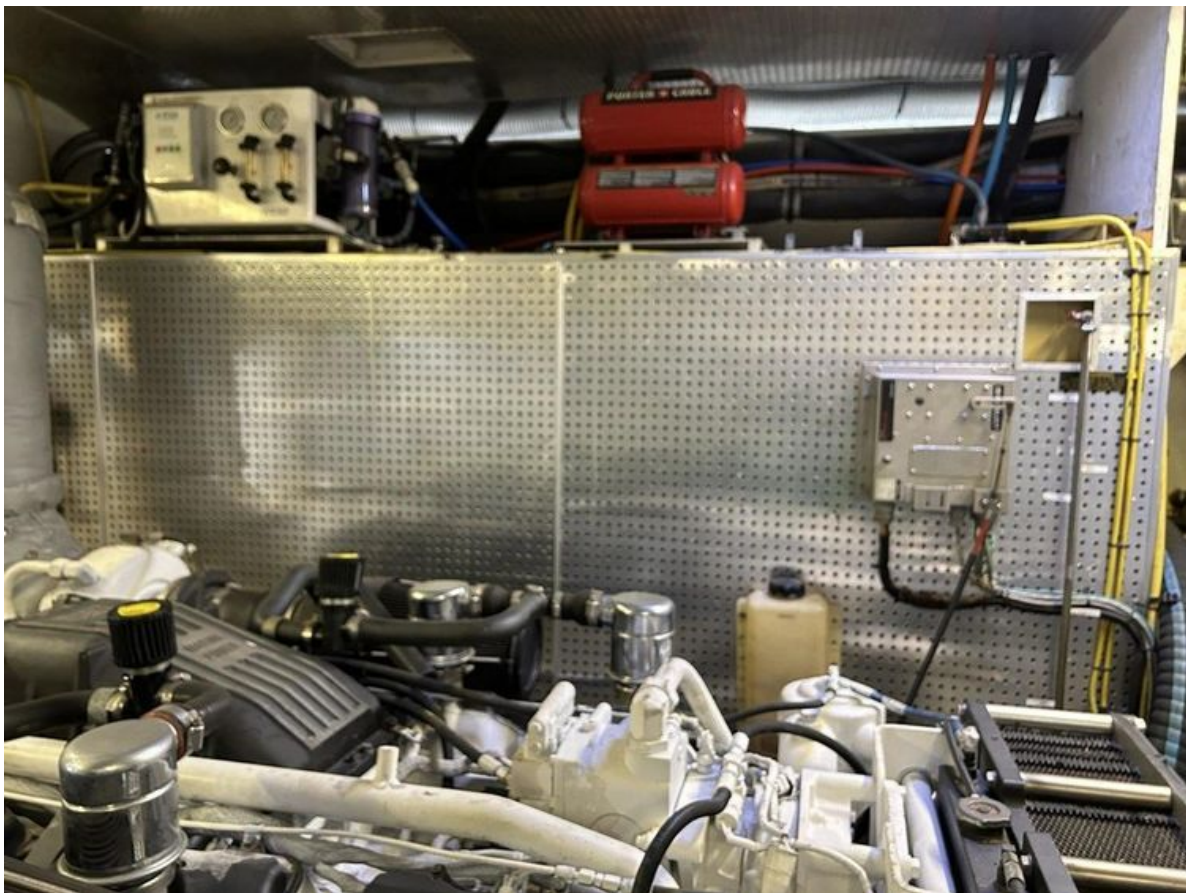
Fuel Type:

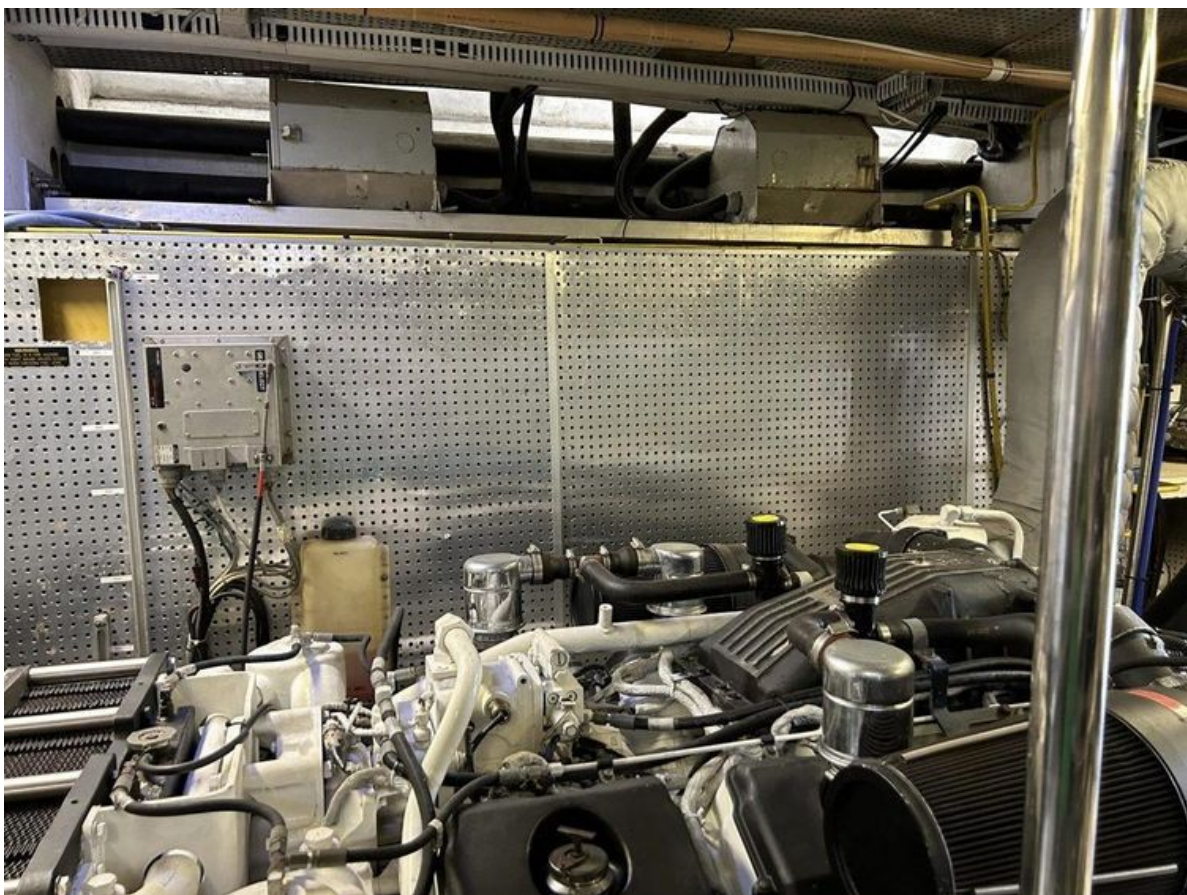
Diesel

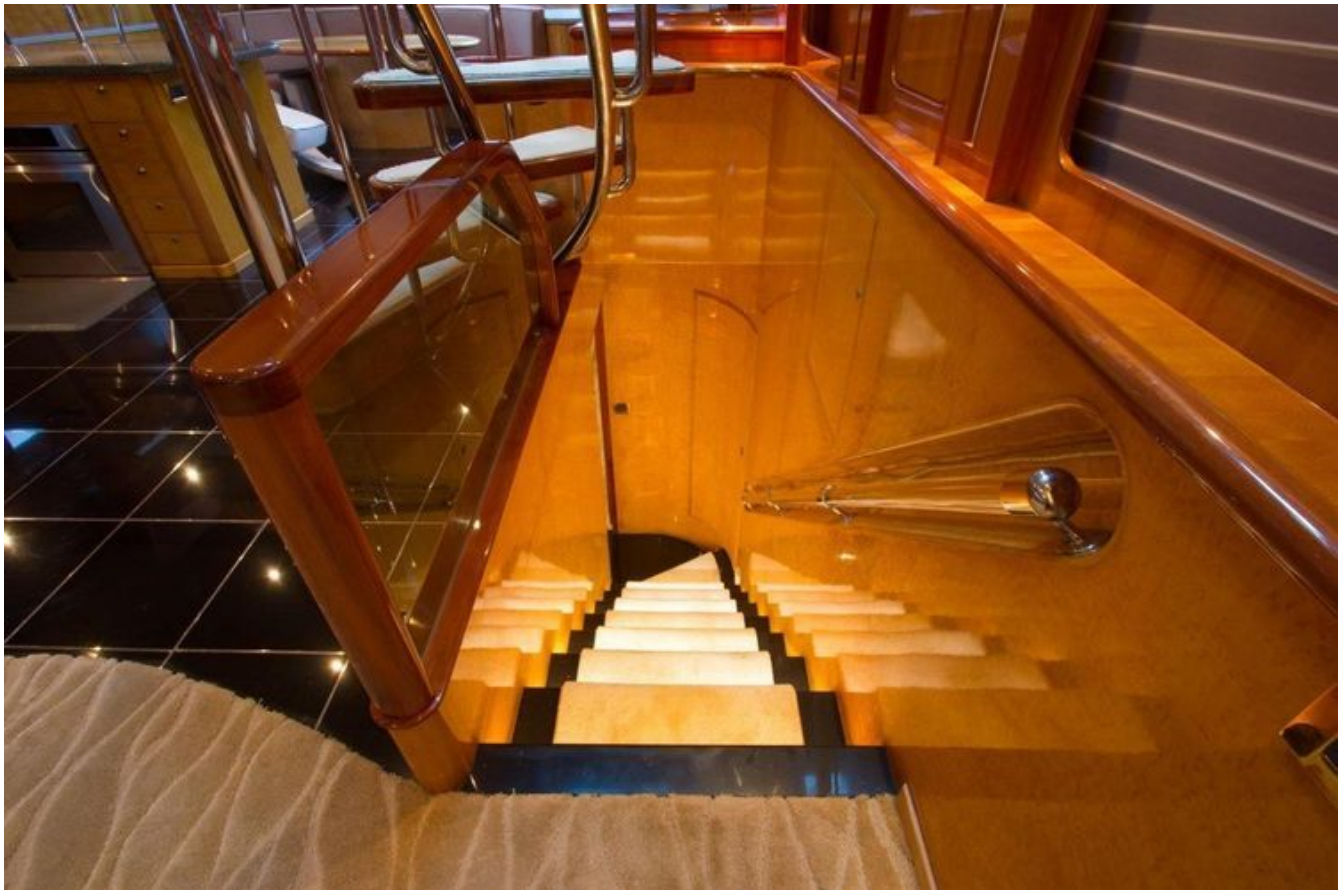
GALLERY











CONTACTS

Shestakov Yacht Sales is a brokerage company specializing in the sale and service of yachts worldwide. The company offers services for buying and selling both new and used motor yachts, sailing vessels, and luxury superyachts. They also provide yacht registration, insurance, technical maintenance, crew selection, and charter organization services across the U.S., Canada, Latin America, the Caribbean, and the Bahamas.

The founder and lead broker of the company is Andrey Shestakov, a licensed and certified expert with extensive experience in marine engineering and shipbuilding.

The company has an extensive network of partnerships with major yacht manufacturers worldwide and provides services in multiple languages, including Russian, Ukrainian, Spanish, and English. The office is in Dania Beach, Florida, USA.

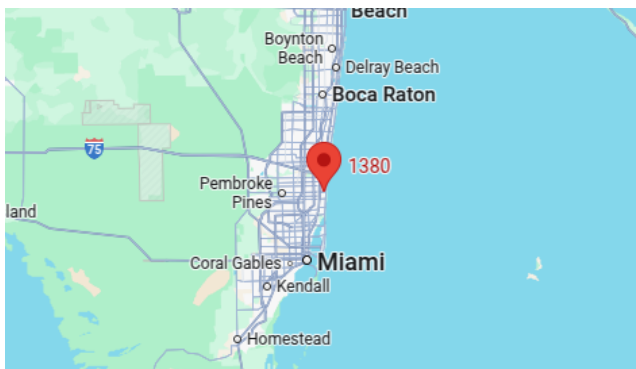
For more information and to view available yachts, you can visit the company's official website: <https://shestakovyachtsales.com>

Contact details

Phone: +1(954)274-4435

Email: andrey@shestakovyachtsales.com

Address



1380 Weeping Willow Way, Hollywood,
Florida 33019