



SHESTAKOV

Yacht Sales

420 - PRESTIGE



Builder:

PRESTIGE

Model:

420

LOA:

42' 0" (13.06 m)

Min Draft:

2' 11" (0.90 m)

Beam:

13' 0" (4.09 m)

Max Draft:

11' 9" (3.58 m)

Gross Tonnage:

12.76 Pounds

Water Capacity:

112 Gallons

Fuel Capacity:

309 Gallons

Sleeps:

4

Total Heads:

2

Crew Cabin:

1

If you would like to buy a yacht **420 - PRESTIGE** or would like help, please call +1(954)274-4435 or visit shestakovyachtsales.com

TABLE OF CONTENTS

OVERVIEW	3
Selecting a 420	3
Features of the Model	3
Technical Specifications	4
Pricing and Ordering	4
Questions and Answers	4
Owner Experience Review	5
Pros and Cons	6
Comparison with Other Models	6
SPECIFICATIONS	8
GALLERY	9
CONTACTS	14

OVERVIEW

Discover the 420 by PRESTIGE — a motor yacht built with a fiberglass and plastic construction hull, penned externally by Garroni Design and fitted inside by JP Concepts. Twin **Cummins** inboard **diesel** propulsion, accommodations for 4 with 2 heads, plus a dedicated crew cabin, make this 42 ft (13.06 m) cruiser an attractive option. Presented by Andrey Shestakov and Shestakov Yacht Sales.

Selecting a 420

Opting for the 420 means choosing a balance of livable cruising volume and manageable ownership. As a motor yacht, it is equipped with twin **Cummins** engines, practical **inboard diesel** drive, and a layout that accommodates 4 people with 2 heads — well suited to couples or small families. The vessel includes a crew cabin with 1 bed to maintain guest privacy during extended trips. With 309 gallons of fuel and 112 gallons of fresh water aboard, it supports longer weekend passages, while the fiberglass and plastic construction helps keep maintenance straightforward without sacrificing the finish expected from PRESTIGE.

Features of the Model

- Exterior styling by Garroni Design; interior appointments by JP Concepts
- fiberglass and plastic hull with fiberglass deck
- Powerplant: 2 x **Cummins** , Inboard, **Diesel**
- Accommodation: sleeps 4; 2 heads; crew cabin with 1 bed
- Tankage: 309 gal fuel; 112 gal fresh water
- Size and proportions suited to varied cruising: 42 ft LOA and 13 ft beam
- Draft expressed as minimum and maximum values for flexible operation

- Gross tonnage recorded at 12.76 GT

Technical Specifications

- LOA: 42 ft (13.06 m)
- Beam: 13 ft (4.09 m)
- Draft (min/max): 2.953 ft (0.9 m) / 11.756 ft (3.5833 m)
- Gross tonnage: 12.76 GT
- Engines: 2 x **Cummins** ; type: Inboard; fuel: **Diesel**
- Hull: fiberglass and plastic
- Deck material: Fiberglass
- Designers: Hull — Garroni Design; Interior — JP Concepts
- Accommodation: 4 sleeps; 2 heads
- Crew: 1 cabin; 1 bed
- Fuel capacity: 309 gal
- Water capacity: 112 gal

Pricing and Ordering

To obtain up-to-date availability, price information, or to schedule a viewing or submit an offer on the 420 by PRESTIGE, reach out to Andrey Shestakov at Shestakov Yacht Sales. Our brokerage staff will guide you through inspections, negotiations, and the closing process to make your purchase as smooth as possible.

Questions and Answers

Q: What is the LOA of the 420? A: The **LOA** measures 42 ft (13.06 m).

Q: What type of yacht and hull does it have? A: This model is a motor yacht

constructed with a fiberglass and plastic hull.

Q: What powers the yacht? A: Propulsion is provided by two **Cummins inboard diesel** engines.

Q: How many can sleep aboard, and how many heads are there? A: The layout **sleeps** 4 and includes **2 heads** , plus a **crew cabin** with one bed.

Q: What are the key capacities? A: **Fuel capacity** is 309 gallons and **water capacity** is 112 gallons.

Owner Experience Review

Owners frequently praise the 420 from PRESTIGE as an excellent family platform that suits owner-operators for weekend escapes and relaxed coastal runs. The main salon is noted for its brightness and large windows, while the aft-galley arrangement promotes a natural flow to the cockpit. The flybridge, equipped with wraparound seating, a wetbar, table, and sunpads, is popular for casual outdoor entertaining.

Underway, the yacht benefits from joystick-assisted maneuvering that eases tight-quarters work in marinas, and the sharp-V entry provides confident behavior in choppy water. Sea-trial reports describe a quick step onto plane at about 16 knots in roughly seven seconds and peak speeds approaching 31 knots when fitted with the 425 hp option; for economical cruising, owners cite examples near 22 knots yielding approximately 200 nautical miles on the 309-gallon tank.

Compared to earlier IPS installations, the later twin Cummins QSB 6.7 shaft/V-drive configuration is appreciated for its straightforward handling and easier serviceability. The full-beam owner's stateroom on this 42-foot platform receives consistent positive feedback, though some owners mention the flybridge has only one forward-facing helm seat and can feel somewhat

shallow. Typical pre-purchase checks include inspecting hull bottoms for core damage or delamination from chocked storage, confirming QSB service records (cooling system work, anode replacement, belt changes, and scheduled maintenance), and ensuring electronic control modules are dry, clean, and securely mounted.

Pros and Cons

- The full-beam owner's stateroom and the luminous saloon with an aft-galley layout feel notably spacious for a 42-foot yacht.
- Joystick-assisted docking coupled with the predictable shaft/V-drive setup makes close-quarters handling straightforward.
- Performance is reported as lively, with a rapid transition to plane (~7 s at ~16 kt) and a top speed near 31 kt with the 425 hp option.
- The flybridge provides only one forward-facing helm seat and can feel relatively shallow.
- Inspect hull undersides carefully for potential core damage or delamination when boats have been stored on chocks.
- Cummins QSB 6.7s are generally dependable but require documented maintenance, particularly for cooling systems, anodes, and belts.

Comparison with Other Models

Model	LOA	Beam	Draft	Speed (Cruising/Max)	Gross Tonnage
420	42' 0" (13.06 m)	13' 0" (4.09 m)	2' 11" (0.90 m) – 11' 9" (3.58 m)		12.76
X60	62' 0" (18.90 m)	15' 0" (4.85 m)	14' 3" (4.33 m)		
590 Fly	61' 0" (18.69 m)	15' 0" (4.83 m)	14' 6" (4.42 m)	23 kn / 29 kn	

460S	46' 0" (14.25 m)	14' 0" (4.27 m)	11' 9" (3.58 m)		
550 Fly	55' 0" (16.76 m)	15' 0" (4.80 m)	12' 7" (3.83 m)	30 kn	
460 Fly	46' 0" (14.30 m)	14' 0" (4.29 m)	11' 3" (3.42 m)		
590	61' 0" (18.69 m)	15' 0" (4.83 m)	14' 6" (4.42 m)	23 kn / 29 kn	
630 Flybridge	63' 0" (19.20 m)	16' 0" (5.16 m)	16' 2" (4.92 m)	22 kn / 26 kn	
620	62' 0" (18.90 m)	16' 0" (5.11 m)	13' 11" (4.25 m)		
630	62' 0" (19.02 m)	16' 0" (5.16 m)	15' 0" (4.58 m)	24 kn / 28 kn	

SPECIFICATIONS

LOA:

42' 0" (13.06 m)

Beam:

13' 0" (4.09 m)

Gross Tonnage:

12.76 Pounds

Fuel Capacity:

309 Gallons

Sleeps:

4

Crew Cabin:

1

Hull Material:

Fiberglass and Plastic Yachts

Hull Designer:

Garroni Design

Engines:

2

Engine Type:

Inboard

Min Draft:

2' 11" (0.90 m)

Max Draft:

11' 9" (3.58 m)

Water Capacity:

112 Gallons

Total Heads:

2

Crew Berths:

1

Deck Material:

Fiberglass

Interior Designer:

JP Concepts

Manufacturer:

Cummins

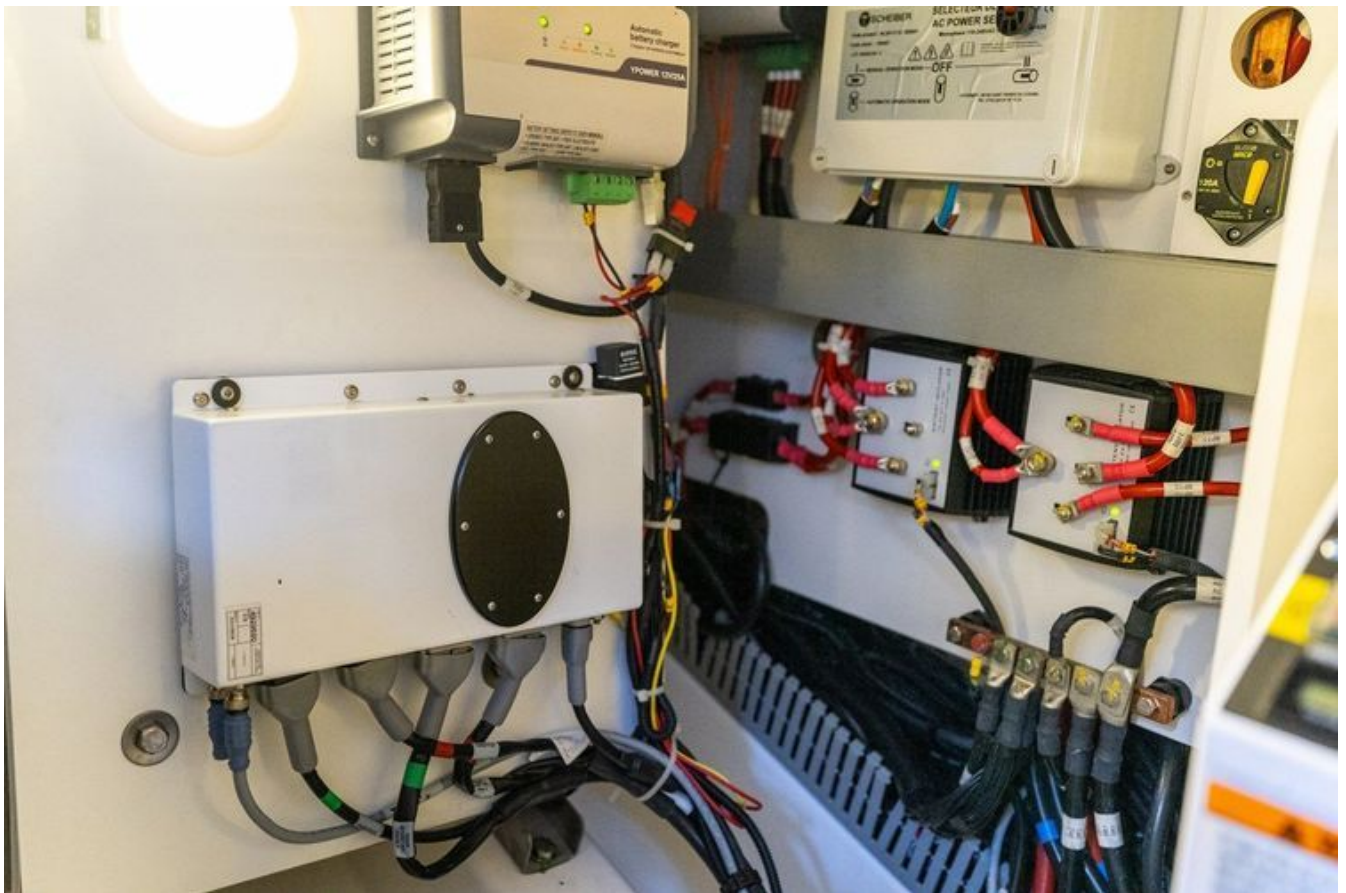
Fuel Type:

Diesel

GALLERY











CONTACTS

Shestakov Yacht Sales is a brokerage company specializing in the sale and service of yachts worldwide. The company offers services for buying and selling both new and used motor yachts, sailing vessels, and luxury superyachts. They also provide yacht registration, insurance, technical maintenance, crew selection, and charter organization services across the U.S., Canada, Latin America, the Caribbean, and the Bahamas.

The founder and lead broker of the company is Andrey Shestakov, a licensed and certified expert with extensive experience in marine engineering and shipbuilding.

The company has an extensive network of partnerships with major yacht manufacturers worldwide and provides services in multiple languages, including Russian, Ukrainian, Spanish, and English. The office is in Dania Beach, Florida, USA.

For more information and to view available yachts, you can visit the company's official website: <https://shestakovyachtsales.com>

Contact details

Phone: +1(954)274-4435

Email: andrey@shestakovyachtsales.com

Address



1380 Weeping Willow Way, Hollywood,
Florida 33019