



SHESTAKOV

Yacht Sales

95 MOTOR YACHT - PRINCESS



Builder:

PRINCESS

Model:

95 Motor Yacht

LOA:

95' 0" (29.11 m)

Beam:

23' 0" (7.06 m)

Max Draft:

19' 8" (6 m)

Cruise Speed:

20 kn / 23.02 mph

Max Speed:

28 kn / 32.22 mph

Water Capacity:

1600 Gallons

Fuel Capacity:

2900 Gallons

Total Heads:

6

Hull Material:

Fiberglass and Plastic Yachts

Deck Material:

Fiberglass

If you would like to buy a yacht **95 MOTOR YACHT - PRINCESS** or would like help, please call +1(954)274-4435 or visit shestakovyachtsales.com

TABLE OF CONTENTS

OVERVIEW 3

- Selecting a 95 Motor Yacht 3
- Features of the Model 3
- Technical Specifications 4
- Pricing and Ordering 4
- Questions and Answers 4
- Owner Experience Review 5
- Pros and Cons 6
- Comparison with Other Models 6

SPECIFICATIONS 8

GALLERY 9

CONTACTS 14

OVERVIEW

The 95 Motor Yacht from PRINCESS is an elegant motor yacht constructed with a fiberglass and plastic hull and a fiberglass deck. It achieves a comfortable cruise of 20 knots and can reach up to 28 knots when pushed. Listed and marketed by Shestakov Yacht Sales, with bespoke brokerage support from Andrey Shestakov.

Selecting a 95 Motor Yacht

Deciding on the 95 Motor Yacht revolves around matching seakeeping, internal volume, and construction choices to your cruising plans. At 95 ft (29.11 m) LOA with a 23 ft (7.06 m) beam on a monohull platform, the design delivers a generous living area and inherent stability, while twin MTU inboard diesels provide an efficient 20-knot cruise and a 28-knot top end when required. For expert brokerage advice on timing a purchase, inspecting condition, and selecting the right motor yacht in this segment, work directly with Andrey Shestakov and the Shestakov Yacht Sales team.

Features of the Model

- Performance profile: 20 kn cruise (23.02 mph) and 28 kn max (32.22 mph)
- Powertrain: twin PRINCESS-specified MTU inboard diesel engines (2 x MTU)
- Construction: fiberglass and plastic hull with fiberglass deck
- Configuration: Monohull for straightforward handling and tracking
- Capacity highlights: 2,900 gal fuel and 1,600 gal fresh water for extended autonomy
- Onboard amenities: 6 heads to support guest and crew comfort
- Category: a premium motor yacht suitable for private cruising or charter programs

Technical Specifications

- Length overall (LOA): 95 ft (29.11 m)
- Beam: 23 ft (7.06 m)
- Draft (max): 19.685 ft (6 m)
- Cruising speed: 20 kn (23.02 mph)
- Maximum speed: 28 kn (32.22 mph)
- Engines: 2 x MTU, Inboard, Diesel
- Hull: fiberglass and plastic; configuration: Monohull
- Deck material: Fiberglass
- Heads: 6
- Fuel capacity: 2,900 gal
- Fresh water capacity: 1,600 gal

Pricing and Ordering

For up-to-date pricing, availability, and brokerage services for the 95 Motor Yacht from PRINCESS, please contact Andrey Shestakov at Shestakov Yacht Sales. Our brokers will arrange inspections, handle negotiations, and prepare the necessary paperwork to simplify the purchase of your motor yacht built with fiberglass construction.

Questions and Answers

Q: What are the cruising and maximum speeds of the 95 Motor Yacht? A: The yacht provides a cruising speed of **20 knots (23.02 mph)** and a peak speed of **28 knots (32.22 mph)** .

Q: What engines power this model? A: It is fitted with **2 x MTU** engines in an **Inboard** configuration running on **Diesel** fuel, chosen for durability and

service support.

Q: What is the hull type and construction? A: The vessel is a **Monohull** featuring a fiberglass and plastic hull paired with a **Fiberglass** deck.

Q: What are the key dimensions, including draft? A: **LOA** measures 95 ft (29.11 m), **Beam** is 23 ft (7.06 m), and the maximum **Draft** is 19.685 ft (6 m).

Q: How can I get pricing or arrange a viewing? A: Contact Andrey Shestakov at Shestakov Yacht Sales for comprehensive pricing details, to schedule viewings, and to explore purchase options for the 95 Motor Yacht by PRINCESS.

Owner Experience Review

Owners are typically drawn to the 95 Motor Yacht from PRINCESS because it suits family-oriented cruising and can be operated with or without professional crew. The various 4–5 cabin plans commonly accommodate 8–10 guests plus crew, and the layout often includes a full beam owner’s stateroom while arranging guest cabins to maximize privacy. Daytime living areas—such as the saloon, flybridge, and aft deck—are spacious and well suited for entertaining, whether cruising privately or operating in Mediterranean charter markets. Several owners have chosen to install additional engine room sound insulation to reduce noise transmission into the accommodation spaces.

On the water, the Bernard Olesinski deep V hull is known for confident handling and respectable seakeeping in choppy conditions. Owners report typical cruise speeds around 22 knots, with some C32 powered examples achieving top speeds in the mid 20s, while the yacht can be comfortably throttled back for longer passages; individual boats have demonstrated robust sea trial performance. Twin Caterpillar C32s are commonly found in the ownership fleet and carry notable routine maintenance costs, although parts and service networks are broadly available. The engine room is generous with

decent access to machinery, and fuel consumption remains the principal ongoing expense to plan for. On the resale market, brokers routinely recommend a full survey, sea trial, and documentation review—many listings are marketed “as seen,” and survey results typically guide price negotiation and any subsequent refit work.

Pros and Cons

- Deep V hull by Bernard Olesinski offers confident handling and good seakeeping in chop.
- Flexible 4–5 cabin arrangements with a full beam owner’s suite and crew quarters suit family cruising or charter.
- Sizeable engine room with reasonable access and widely supported Caterpillar C32s aids serviceability.
- High fuel consumption is a primary ongoing operating cost.
- Routine major service on twin C32s can be significant in time and budget.
- Some owners add extra engine room soundproofing to reduce noise reaching the accommodation.

Comparison with Other Models

Model	LOA	Beam	Draft	Speed (Cruising/Max)	Gross Tonnage
95 Motor Yacht	95' 0" (29.11 m)	23' 0" (7.06 m)	19' 8" (6 m)	20 kn / 28 kn	
V39	39' 0" (11.89 m)	12' 0" (3.78 m)	10' 11" (3.33 m)	22 kn / 32 kn	
Y85 Motor Yacht	85' 0" (25.91 m)	20' 0" (6.10 m)	16' 5" (5 m)	28 kn / 32 kn	
Princess Y78	80' 0" (24.61 m)				
30M	99' 0" (30.45 m)	23' 0" (7.05 m)	6' 9" (2.05 m)	16 kn / 20 kn	127.83
X95	95' 0" (29.11 m)	22' 0" (6.78 m)	21' 7" (6.58 m)	18 kn	104
23m 74	74' 0" (22.56 m)	18' 0" (5.72 m)	17' 6" (5.33 m)		
F55	55' 0" (16.76 m)	16' 0" (4.88 m)	15' 10" (4.83 m)	23 kn / 28 kn	

V58	58' 0" (17.67 m)	15' 0" (4.59 m)	3' 7" (1.10 m)	25 kn / 30 kn	
S60 Princess Yachts	60' 0" (18.29 m)	16' 0" (4.88 m)	16' 5" (5 m)	28 kn / 35 kn	40

SPECIFICATIONS

LOA:

95' 0" (29.11 m)

Max Draft:

19' 8" (6 m)

Cruise Speed:

20 kn / 23.02 mph

Water Capacity:

1600 Gallons

Total Heads:

6

Hull Material:

Fiberglass and Plastic Yachts

Hull Configuration:

Monohull

Engines:

2

Engine Type:

Inboard

Beam:

23' 0" (7.06 m)

Max Speed:

28 kn / 32.22 mph

Fuel Capacity:

2900 Gallons

Deck Material:

Fiberglass

Manufacturer:

MTU

Fuel Type:

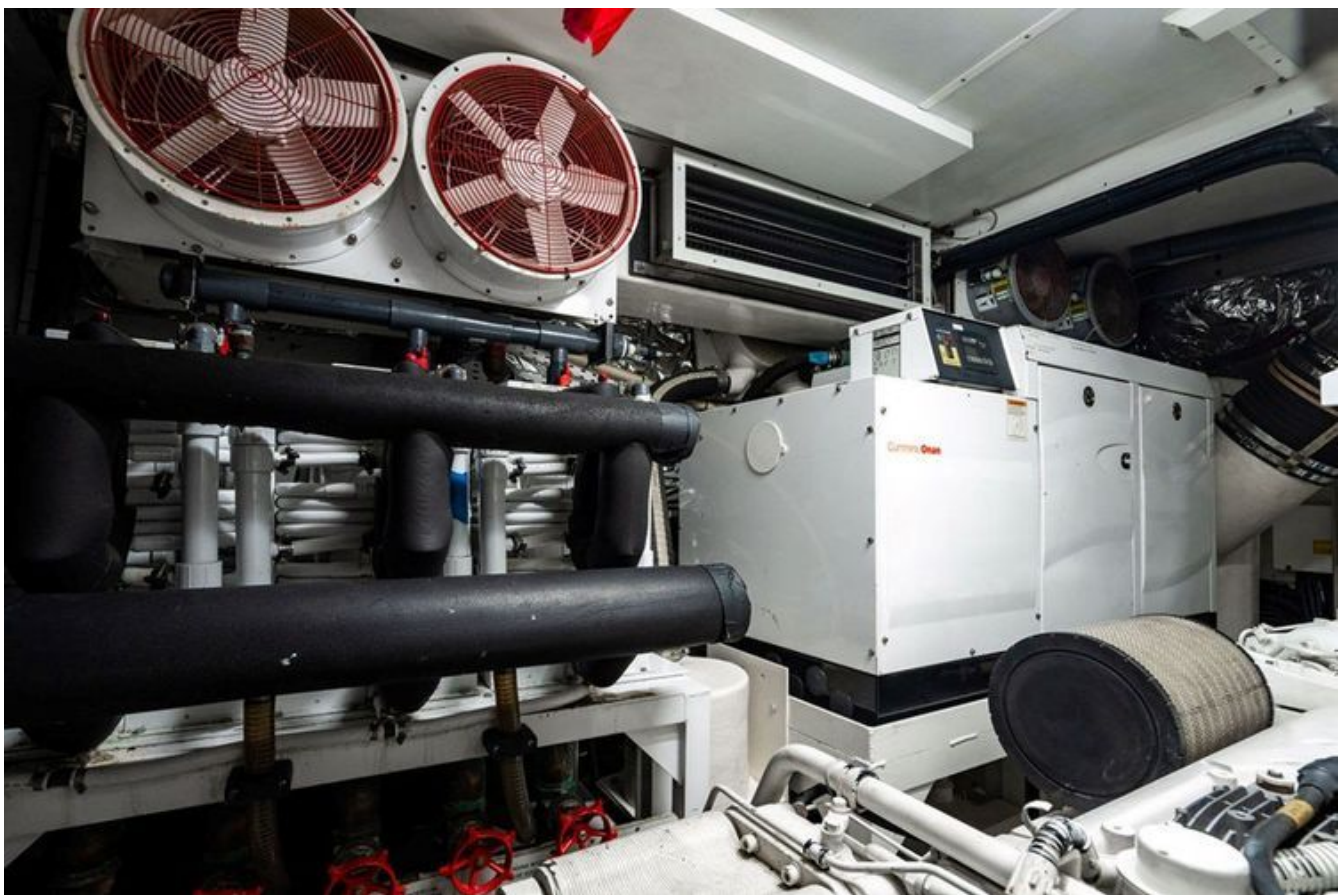
Diesel

GALLERY











CONTACTS

Shestakov Yacht Sales is a brokerage company specializing in the sale and service of yachts worldwide. The company offers services for buying and selling both new and used motor yachts, sailing vessels, and luxury superyachts. They also provide yacht registration, insurance, technical maintenance, crew selection, and charter organization services across the U.S., Canada, Latin America, the Caribbean, and the Bahamas.

The founder and lead broker of the company is Andrey Shestakov, a licensed and certified expert with extensive experience in marine engineering and shipbuilding.

The company has an extensive network of partnerships with major yacht manufacturers worldwide and provides services in multiple languages, including Russian, Ukrainian, Spanish, and English. The office is in Dania Beach, Florida, USA.

For more information and to view available yachts, you can visit the company's official website: <https://shestakovyachtsales.com>

Contact details

Phone: +1(954)274-4435

Email: andrey@shestakovyachtsales.com

Address



1380 Weeping Willow Way, Hollywood,
Florida 33019