



SHESTAKOV

Yacht Sales

20 SPORT – PRO-LINE



Builder:

Pro-Line

Model:

20 Sport

LOA:

20' 0" (6.25 m)

Min Draft:

4' 1" (1.25 m)

Beam:

8' 0" (2.59 m)

Max Speed:

40 kn / 40 mph

Fuel Capacity:

68 Gallons

Total Heads:

1

Hull Material:

Fiberglass and Plastic Yachts

Deck Material:

Fiberglass

Engines:

1

Manufacturer:

Mercury

If you would like to buy a yacht **20 SPORT – Pro-Line** or would like help, please call +1(954)274-4435 or visit shestakovyachtsales.com

TABLE OF CONTENTS

OVERVIEW	3
Selecting a 20 Sport	3
Features of the Model	3
Technical Specifications	4
Pricing and Ordering	4
Questions and Answers	4
Owner Experience Review	5
Pros and Cons	6
Comparison with Other Models	6
SPECIFICATIONS	7
GALLERY	8
CONTACTS	13

OVERVIEW

The 20 Sport from Pro-Line is a compact center-console motor yacht built on a resilient fiberglass and plastic hull. Designed for straightforward operation in a center-console arrangement, this model is offered through Shestakov Yacht Sales with direct support from broker Andrey Shestakov.

Selecting a 20 Sport

For buyers seeking a low-maintenance platform that is easy to operate, the 20 Sport represents a focused option: measuring 20 ft LOA (6.25 m) with an 8 ft beam (2.59 m) and powered by a single Mercury outboard for uncomplicated ownership. Its architecture follows a practical center console format and a tough fiberglass and plastic build. Capable of reaching speeds up to 40 knots (40 mph), it appeals to those who want a compact hull that still delivers confident performance.

Features of the Model

- Category and layout: a motor yacht arranged in a center console arrangement
- Construction: fiberglass and plastic hull; fiberglass deck
- Propulsion: 1 Mercury outboard; gas
- Speed: up to 40 knots (40 mph)
- LOA: 20 ft (6.25 m); Beam: 8 ft (2.59 m)
- Draft (min): 4.101 ft (1.25 m)
- Fuel capacity: 68 gal
- Heads: 1
- Builder: Pro-Line

Technical Specifications

- LOA: 20 ft (6.25 m)
- Beam: 8 ft (2.59 m)
- Draft (min): 4.101 ft (1.25 m)
- Maximum speed: 40 knots (40 mph)
- Engines: 1 x Mercury, Outboard, Gas
- Fuel capacity: 68 gal
- Hull: fiberglass and plastic
- Deck: Fiberglass
- Layout: center console
- Type: motor yacht
- Heads: 1

Pricing and Ordering

To explore current stock, pricing details, and estimated delivery for the 20 Sport, reach out to Andrey Shestakov at Shestakov Yacht Sales. Our brokerage team will walk you through specification reviews, vessel inspections, and the paperwork required to complete your purchase smoothly.

Questions and Answers

Q: What is the exact yacht type of the 20 Sport? A: It is a motor yacht employing a center console layout constructed on a fiberglass and plastic hull.

Q: Who builds the 20 Sport? A: The vessel is manufactured by Pro-Line. Assistance with selection and acquisition is available from Shestakov Yacht Sales and broker Andrey Shestakov.

Q: What propulsion and fuel does it use? A: A single Mercury **outboard**

running on **gas** provides propulsion for the 20 Sport.

Q: What are the key dimensions? A: **LOA** is 20 ft (6.25 m), **Beam** is 8 ft (2.59 m), and **Draft (min)** is 4.101 ft (1.25 m).

Q: How fast does it go and what onboard capacities are listed? A: **Maximum speed** is up to 40 knots (40 mph). The boat carries **68 gal** of fuel and includes **1 head** .

Owner Experience Review

Owners typically employ the 20 Sport from Pro-Line as a purpose-built center-console for sportfishing and versatile day outings. The roughly 81 sq ft cockpit and an open forward area facilitate casting and movement, while integrated tackle and rod storage, a 35-gallon baitwell, and an insulated forward storage compartment that doubles as a fishbox support the fishing role. In practice, the model also adapts well to family day trips—short runs to restaurants or light waterskiing—and trailers easily for weekend use. Typical operations are short nearshore hops with occasional offshore forays appropriate to a 20-foot hull.

On the water, handling is described as predictable and reassuring for a vessel of this size. Owners note that engine setup strongly affects performance: lighter 150 hp two-stroke engines commonly reach about 38–40 mph at wide-open throttle, whereas heavier 150 hp four-stroke packages often achieve around 30–32 mph. Poor prop choice is frequently blamed for lackluster performance or sluggish hole shots, and several owners observe a slower transition onto plane with heavier four-strokes, although cruising becomes steady once on plane.

Comfort is arranged primarily for day use rather than extended cruising. The center-console provides room for a porta-potti within the console,

straightforward helm seating, and a rated capacity of up to seven passengers when weight limits are observed. Routine outboard maintenance and early inspections are recommended, with owners typically checking propellers and steering/rigging. On older boats, monitor drainage points (such as clogged transom drains and water collecting in the battery compartment) and be aware that some hulls have required structural tasks like fuel-tank replacement that involved access to the floor and transom; one owner reported approximately \$8,500 for tank and floor repairs in 2018, though actual costs depend on each boat and the service yard.

Pros and Cons

- Versatile day-boat suitable for fishing, light watersports, and quick runs ashore, with straightforward trailering.
- Spacious ~81 sq ft cockpit and open bow that promote easy casting and movement for a small crew.
- Fishing-oriented amenities including built-in tackle/rod storage, a 35-gallon baitwell, and an insulated forward box that can serve as a fishbox.
- Limited overnight capability; the center-console layout with only a porta-potti is optimized for daytime use.
- Performance can be highly dependent on prop choice and heavier 4-stroke installations, which may reduce hole-shot responsiveness and top speed.
- Older examples may require attention to drainage systems and, in some cases, fuel-tank and floor work; repair costs vary by condition and location.

Comparison with Other Models

Model	LOA	Beam	Draft	Speed (Cruising/Max)	Gross Tonnage
20 Sport	20' 0" (6.25 m)	8' 0" (2.59 m)	4' 1" (1.25 m)	40 kn	
32 Express	32' 0" (9.75 m)	10' 0" (3.30 m)	6' 0" (1.83 m)		

SPECIFICATIONS

LOA:

20' 0" (6.25 m)

Beam:

8' 0" (2.59 m)

Max Speed:

40 kn / 40 mph

Total Heads:

1

Hull Material:

Fiberglass and Plastic Yachts

Engines:

1

Engine Type:

Outboard

Min Draft:

4' 1" (1.25 m)

Fuel Capacity:

68 Gallons

Deck Material:

Fiberglass

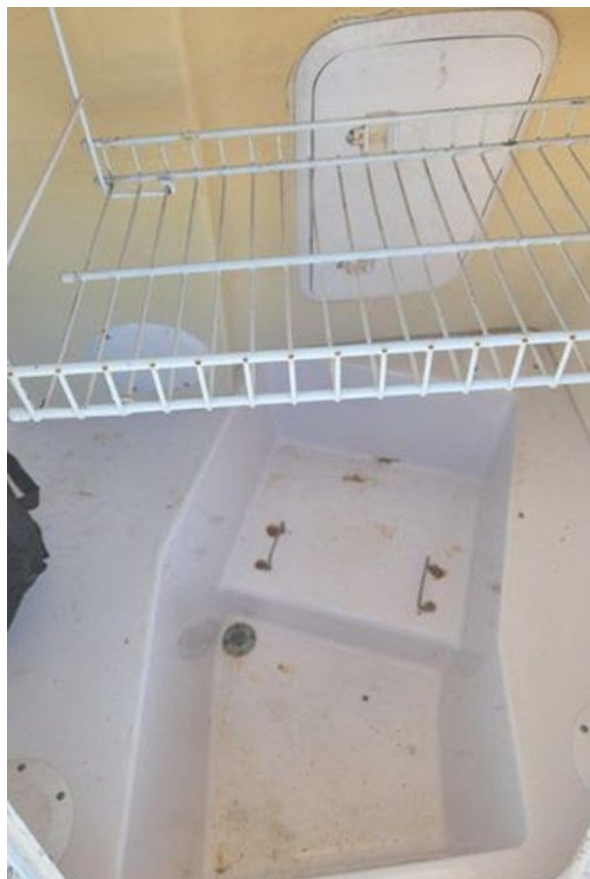
Manufacturer:

Mercury

Fuel Type:

Gas

GALLERY











CONTACTS

Shestakov Yacht Sales is a brokerage company specializing in the sale and service of yachts worldwide. The company offers services for buying and selling both new and used motor yachts, sailing vessels, and luxury superyachts. They also provide yacht registration, insurance, technical maintenance, crew selection, and charter organization services across the U.S., Canada, Latin America, the Caribbean, and the Bahamas.

The founder and lead broker of the company is Andrey Shestakov, a licensed and certified expert with extensive experience in marine engineering and shipbuilding.

The company has an extensive network of partnerships with major yacht manufacturers worldwide and provides services in multiple languages, including Russian, Ukrainian, Spanish, and English. The office is in Dania Beach, Florida, USA.

For more information and to view available yachts, you can visit the company's official website: <https://shestakovyachtsales.com>

Contact details

Phone: +1(954)274-4435

Email: andrey@shestakovyachtsales.com

Address



1380 Weeping Willow Way, Hollywood,
Florida 33019