



SHESTAKOV

Yacht Sales

S 378 SPORT – PURSUIT BOATS



Builder:

PURSUIT BOATS

Model:

S 378 Sport

LOA:

37' 0" (11.28 m)

Min Draft:

8' 6" (2.58 m)

Beam:

12' 0" (3.66 m)

Max Draft:

10' 5" (3.17 m)

Cruise Speed:

34 kn / 39.13 mph

Max Speed:

52 kn / 59.84 mph

Water Capacity:

45 Gallons

Fuel Capacity:

427 Gallons

Total Heads:

1

Hull Material:

Fiberglass and Plastic Yachts

If you would like to buy a yacht **S 378 SPORT – PURSUIT BOATS** or would like help, please call +1(954)274-4435 or visit shestakovyachtsales.com

TABLE OF CONTENTS

OVERVIEW	3
Selecting a S 378 Sport	3
Features of the Model	3
Technical Specifications	4
Pricing and Ordering	4
Questions and Answers	5
Owner Experience Review	5
Pros and Cons	7
Comparison with Other Models	7
SPECIFICATIONS	9
GALLERY	10
CONTACTS	15

OVERVIEW

Designed for confident performance and smart efficiency, the S 378 Sport from PURSUIT BOATS is a motor yacht featuring a fiberglass/plastic hull and propelled by three Yamaha outboards. Shestakov Yacht Sales and broker Andrey Shestakov stand ready to assist with full specifications, current availability, and a smooth buying process.

Selecting a S 378 Sport

If quick acceleration, elevated cruise speeds, and an easily handled platform matter to you, the S 378 Sport is worth considering. Measuring 37 ft (11.28 m) LOA with a 12 ft (3.66 m) beam, it strikes a practical balance between onboard space and marina footprint. The triple Yamaha outboards provide a cruising speed of 34 kn and a maximum approaching 52 kn, while a 427 gal fuel tank permits long days offshore. Thoughtful features include a fiberglass deck over a fiberglass/plastic hull, a single head, and a 45 gal fresh water tank—attributes that make this motor yacht a versatile performer.

Features of the Model

- Triple Yamaha outboard propulsion (Gas/Petrol) engineered for assured acceleration and responsiveness
- Performance envelope: 34 kn cruise (39.13 mph) and 52 kn top speed (59.84 mph)
- Hull and deck construction: fiberglass/plastic hull paired with a fiberglass deck
- Onboard convenience delivered through 1 head
- Capacity allocations for active days: 427 gal fuel and 45 gal water

Count on Shestakov Yacht Sales and Andrey Shestakov for professional assistance with the S 378 Sport from PURSUIT BOATS.

Technical Specifications

- Builder: PURSUIT BOATS
- Model: S 378 Sport
- Type: motor yacht
- Hull: fiberglass and plastic
- Deck Material: Fiberglass
- LOA: 37 ft (11.28 m)
- Beam: 12 ft (3.66 m)
- Draft (min): 8.465 ft (2.58 m)
- Draft (max): 10.4 ft (3.1699 m)
- Engines: 3 x Yamaha, Outboard, Gas/Petrol
- Cruise Speed: 34 kn (39.13 mph)
- Max Speed: 52 kn (59.84 mph)
- Fuel Capacity: 427 gal
- Water Capacity: 45 gal
- Heads: 1

Pricing and Ordering

For up-to-the-minute pricing, delivery timelines, and brokerage services for the S 378 Sport by PURSUIT BOATS, reach out to Shestakov Yacht Sales. Broker Andrey Shestakov can walk you through specifications, timing, and the purchase process from initial offer to closing.

Questions and Answers

Q: What type of boat is the S 378 Sport? A: It is a motor yacht manufactured by PURSUIT BOATS featuring a fiberglass/plastic hull. Its primary emphases are **performance** , **efficiency** , and **practicality** .

Q: How fast does the S 378 Sport go? A: The boat cruises at about 34 kn (39.13 mph) and reaches a top speed near 52 kn (59.84 mph), powered by triple Yamaha outboards.

Q: What powers the S 378 Sport and what fuel does it use? A: Propulsion is via **3 x Yamaha Outboard** engines running on **Gas/Petrol** , providing brisk and responsive power.

Q: What are the key dimensions and draft? A: The S 378 Sport measures **LOA** 37 ft (11.28 m), **beam** 12 ft (3.66 m), with **draft** ranging from 8.465 ft (2.58 m) to 10.4 ft (3.1699 m).

Q: How can I get pricing and purchase support? A: **Contact Shestakov Yacht Sales** . Broker **Andrey Shestakov** will supply current pricing, inventory details, and guide you step by step through buying a S 378 Sport from PURSUIT BOATS.

Owner Experience Review

Owners praise the S 378 Sport from PURSUIT BOATS for its all purpose capability: family day trips, weekend stays, and spirited daytime runs. The climate controlled cabin with a V berth and a dedicated head with shower makes true overnighting realistic, while Vista View hullside windows and in console glazing introduce significantly more daylight below than you'd expect from a center console. Cabin appointments can include TV, microwave, and heating/AC packages, and on deck the patented electric sliding

entertainment center (complete with sink, grill, fridge, and cutting board) plus an aft-facing bench quickly convert the cockpit from a working fishing platform to a social lounge. One owner summarized it: “This boat exceeded all of my expectations for quality, performance, comfort and style. We get compliments every time we are out on the water!”

When underway, the hull’s 22° transom deadrise contributes to steady, predictable handling offshore—a trait reviewers have repeatedly noted. Many owners and test reports reference a practical cruise band around 28–35 knots, with top speeds reported in the 50–60 mph range depending on engine and prop choices. For anglers or overnight guests who spend extended time at anchor, the optional SeaKeeper 3 gyro significantly reduces roll and improves onboard comfort.

Fishing functionality is comprehensive—36 gal livewell, twin 41 gal fishboxes, rod stowage in the gunwales and hardtop, and optional outriggers—while helm ergonomics (triple bolster seats with armrests and an uncluttered electronics layout) support long days behind the wheel. Ownership aspects include the triple Yamaha 425 XTO installation, which offers strong performance but increases fuel consumption in normal cruising (tests commonly cite ~35–44 gph) and raises operating expenses. Some owners and forum posts have noted XTO lower unit cracks and occasional service/diagnostic challenges; prospective buyers, especially in the used market, should review maintenance histories and Yamaha warranty/recall documentation carefully. Pursuit’s service-friendly design elements—extended swim platform access to the outboards, generator service slides, and clearly documented service points—are helpful, yet triple outboard upkeep remains more involved and labor intensive than single or twin arrangements.

Pros and Cons

- True overnight capability with an air conditioned cabin, V berth, and private head with shower.
- Assured offshore ride from a 22° hull, delivering a 28–35 knot cruise band and the option to add a SeaKeeper 3.
- Flexible cockpit that converts between fishing and entertaining via a patented sliding entertainment center and convertible seating.
- Triple Yamaha 425 XTOs consume significant fuel at cruise (~35–44 gph), increasing operational costs.
- Owner reported issues with XTO lower units and diagnostic glitches; verify service histories and warranty actions.
- Maintenance and service demands are higher for a triple outboard arrangement compared with single or twin setups.

Comparison with Other Models

Model	LOA	Beam	Draft	Speed (Cruising/Max)	Gross Tonnage
S 378 Sport	37' 0" (11.28 m)	12' 0" (3.66 m)	8' 6" (2.58 m) – 10' 5" (3.17 m)	34 kn / 52 kn	
OS 315 Offshore	32' 0" (9.96 m)	10' 0" (3.25 m)	4' 11" (1.50 m) – 9' 10" (3 m)		
S328	32' 0" (9.75 m)	10' 0" (3.30 m)	6' 3" (1.92 m) – 9' 0" (2.75 m)		
265 Dual Console	25' 0" (7.90 m)	8' 0" (2.67 m)	5' 2" (1.58 m) – 9' 4" (2.83 m)		
325 OS	34' 0" (10.57 m)	10' 0" (3.30 m)	8' 9" (2.67 m)	32 kn / 48 kn	
2460	24' 0" (7.32 m)	8' 0" (2.59 m)	6' 7" (2 m)		
OS 385	39' 0" (11.89 m)				
C238	24' 0" (7.42 m)	8' 0" (2.59 m)	4' 3" (1.30 m) – 9' 2" (2.80 m)		2

S 428 Sport	43' 0" (13.34 m)	13' 0" (3.96 m)	9' 4" (2.83 m) – 12' 4" (3.75 m)		
385 Offshore	39' 0" (11.94 m)	13' 0" (3.96 m)	6' 10" (2.08 m) – 11' 6" (3.50 m)	24 kn / 30 kn	22

SPECIFICATIONS

LOA:

37' 0" (11.28 m)

Beam:

12' 0" (3.66 m)

Cruise Speed:

34 kn / 39.13 mph

Water Capacity:

45 Gallons

Total Heads:

1

Hull Material:

Fiberglass and Plastic Yachts

Engines:

3

Engine Type:

Outboard

Min Draft:

8' 6" (2.58 m)

Max Draft:

10' 5" (3.17 m)

Max Speed:

52 kn / 59.84 mph

Fuel Capacity:

427 Gallons

Deck Material:

Fiberglass

Manufacturer:

Yamaha

Fuel Type:

Gas/Petrol

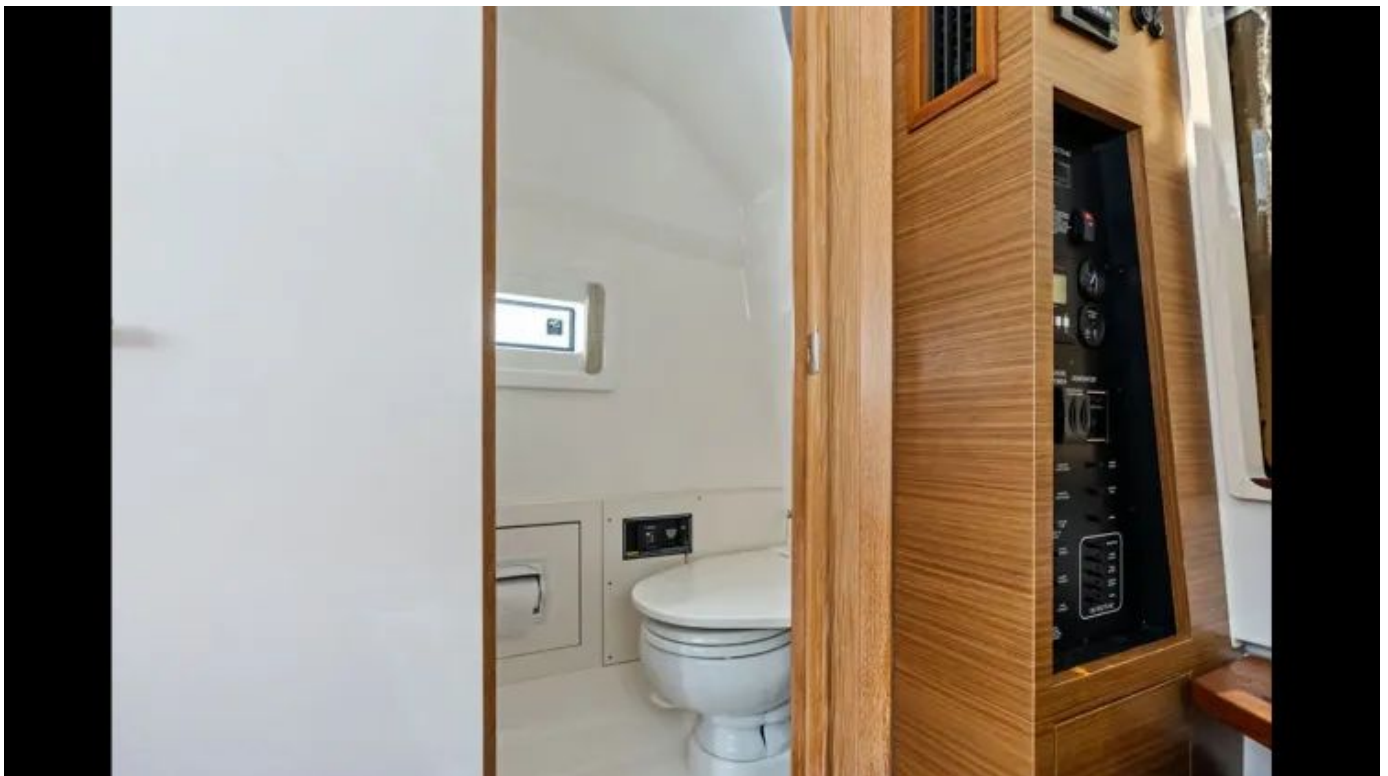
GALLERY











CONTACTS

Shestakov Yacht Sales is a brokerage company specializing in the sale and service of yachts worldwide. The company offers services for buying and selling both new and used motor yachts, sailing vessels, and luxury superyachts. They also provide yacht registration, insurance, technical maintenance, crew selection, and charter organization services across the U.S., Canada, Latin America, the Caribbean, and the Bahamas.

The founder and lead broker of the company is Andrey Shestakov, a licensed and certified expert with extensive experience in marine engineering and shipbuilding.

The company has an extensive network of partnerships with major yacht manufacturers worldwide and provides services in multiple languages, including Russian, Ukrainian, Spanish, and English. The office is in Dania Beach, Florida, USA.

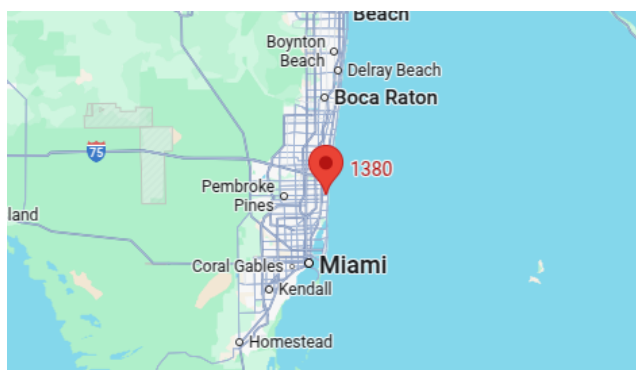
For more information and to view available yachts, you can visit the company's official website: <https://shestakovyachtsales.com>

Contact details

Phone: +1(954)274-4435

Email: andrey@shestakovyachtsales.com

Address



1380 Weeping Willow Way, Hollywood,
Florida 33019